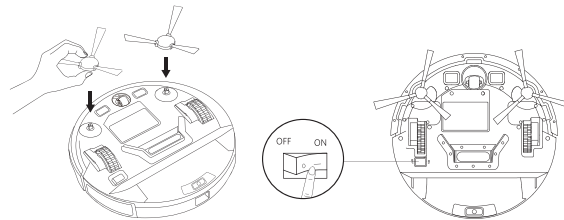


# Quick Start Guide

## Using Your RoboVac



1

2

Remove the sticker next to the power switch, and the foam blocks beside the bumper before use.

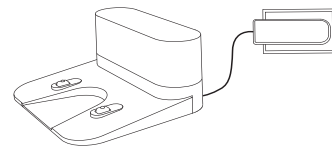


3

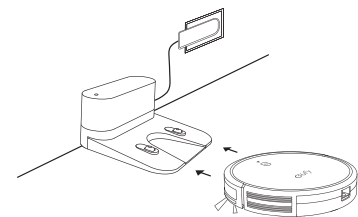
4

If you cannot remove the objects surrounding the Charging Base, check whether RoboVac can return without assistance; if not, contact eufy customer service for help.

- Always keep the Charging Base plugged in, otherwise RoboVac will not automatically return.
- When the Charging Base is connected to AC power, the LED indicator on the Charging Base is SOLID WHITE.



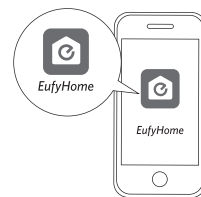
5



6

Fully charge RoboVac before use. The LED indicator on RoboVac breathes orange while charging, and is solid blue when fully charged.

Download the EufyHome app and follow the in-app instructions to complete the Wi-Fi connection. You then will be able to control RoboVac via this app. Refer to the Owner's Manual for details.



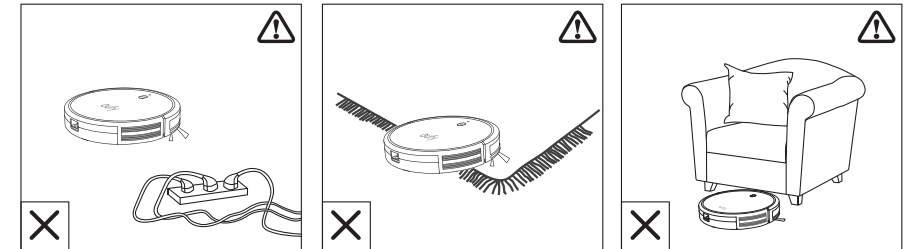
7

Download on the App Store

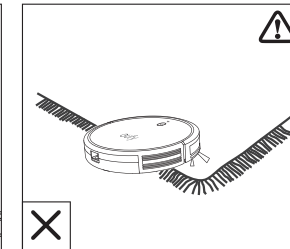
GET IT ON Google Play

## Important Tips

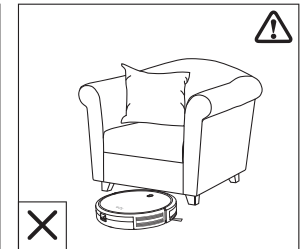
When using for the first time, follow RoboVac to observe and resolve any problems that may occur.



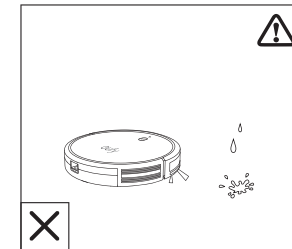
a



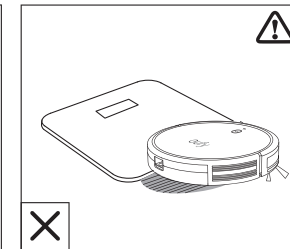
b



c



d



e



f

- Remove power cords and small objects from the floor that may entangle RoboVac.
- Fold tasseled edges of area rugs underneath to prevent tangling RoboVac. Avoid cleaning very dark-colored rugs or high-pile rugs thicker than 1.02 in/26 mm as they may cause RoboVac to malfunction.
- Keep RoboVac away from spaces lower than 2.87 in/73 mm to prevent RoboVac from getting stuck. If necessary, place a physical barrier to block off the problem areas.
- Keep RoboVac away from wet areas.
- RoboVac may climb on top of objects less than 0.63 in/16 mm in height. Remove these objects if possible.
- Anti-drop sensors will prevent RoboVac from tumbling down stairs and steep drops in most cases. Sensors are **less effective** if dirty or when used on carpeted/reflective/very dark-colored floors. It is recommended to place physical barriers to block off areas where RoboVac may fall.

Place physical barriers in front of fireplaces and areas that may cause damage to RoboVac if entered.

51005001724 V01

02

01