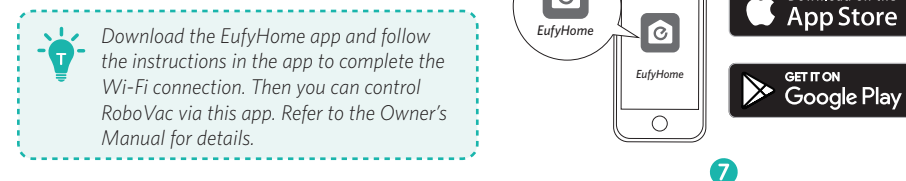
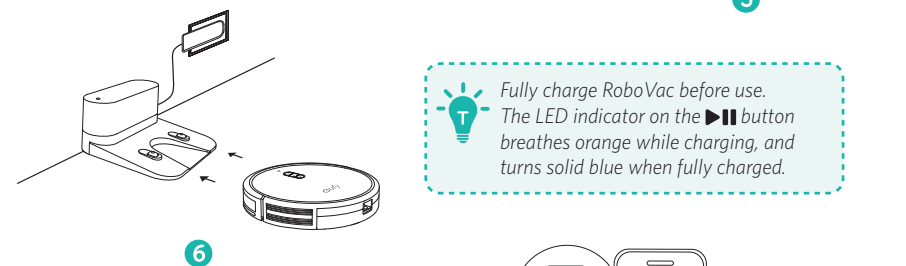
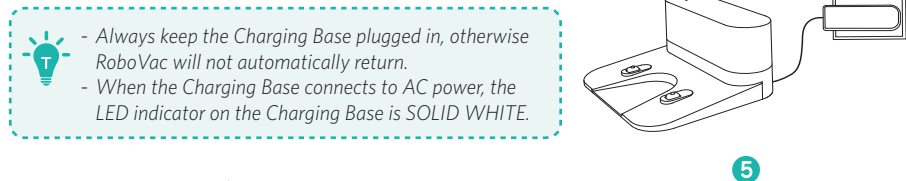
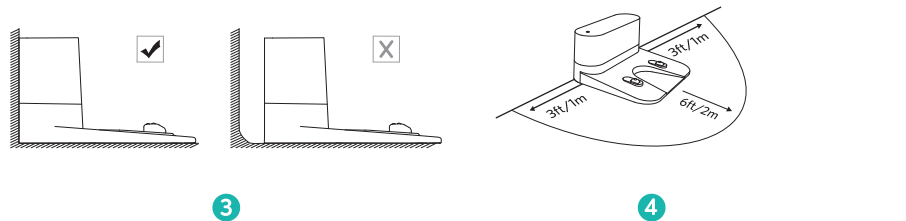
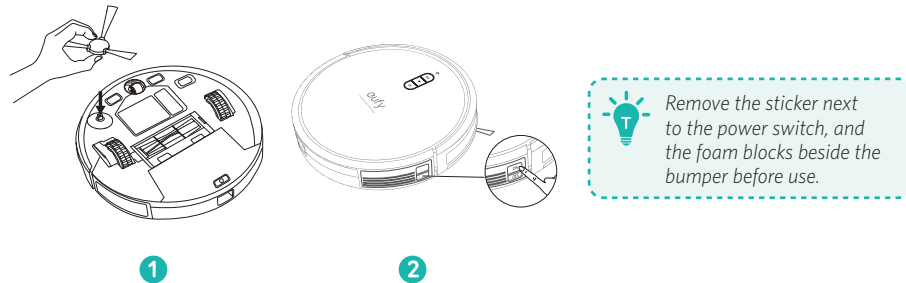


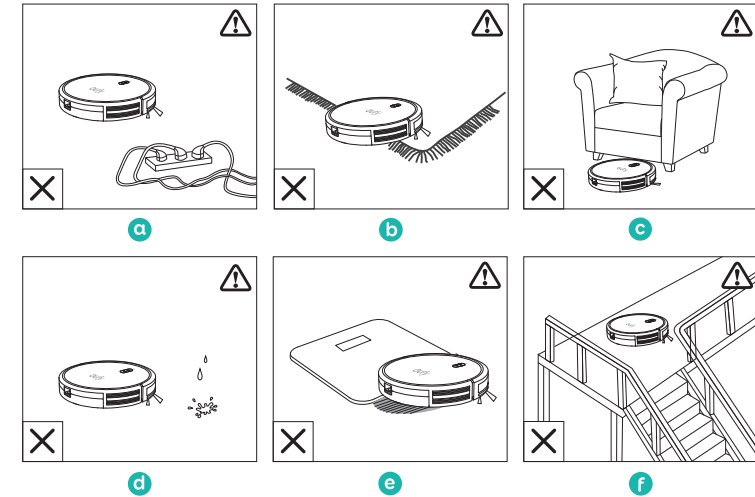
# Quick Start Guide

## Using Your RoboVac

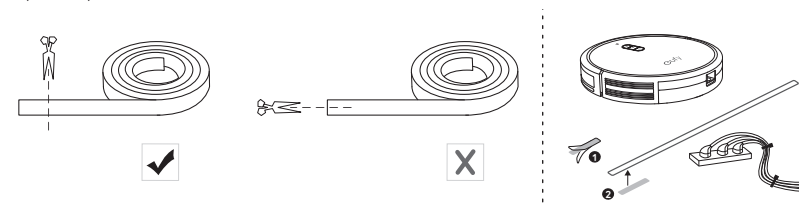


## Important Tips

When using for the first time, follow RoboVac to observe and resolve any problems that may occur.



- Remove power cords and small objects from the floor that may entangle RoboVac. You can use the supplied cable ties to organize your wires and power cords.
- Fold tasseled edges of area rugs underneath to prevent tangling RoboVac. Avoid cleaning very dark-colored high-pile rugs or rugs thicker than 1.02 in/26 mm as they may cause RoboVac to malfunction.
- Keep RoboVac away from spaces lower than 2.87 in/73 mm to prevent RoboVac from getting stuck. If necessary, place a physical barrier to block off the problem areas.
- Keep RoboVac away from wet areas.
- RoboVac may climb on top of objects less than 0.63 in/16 mm in height. Remove these objects if possible.
- Anti-drop sensors will prevent RoboVac from tumbling down stairs and steep drops in most cases. Sensors **are less effective** if dirty or used on carpeted/reflective/very dark-colored floors. It is recommended to apply the Boundary Strip(s) to block off areas where RoboVac may fall.
- To keep RoboVac away from any area or item you do not want RoboVac to clean, apply the Boundary Strip(s) on the floor with adhesive tape to create a virtual barrier. Make sure the strips are placed FLAT on the floor.



Place physical barriers or Boundary Strips in front of fireplaces and areas that may cause damage to RoboVac if entered.