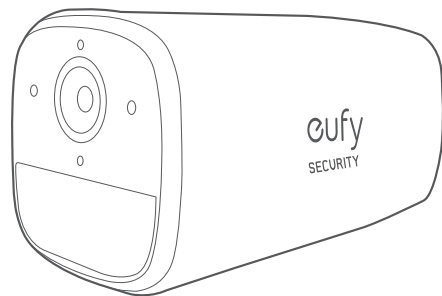


# QUICK START GUIDE

eufyCam Solo / Solo Pro



## 1 / WHAT'S INCLUDED



eufyCam Solo /  
Solo Pro  
Model: T8130X/T8131X



USB Cable



Mounting  
Bracket



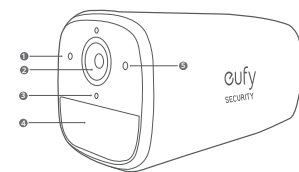
Mounting  
Screw Pack



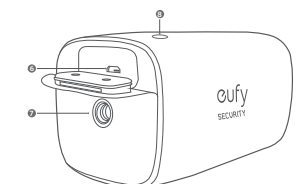
Quick Start  
Guide

## 2 / PRODUCT OVERVIEW

### eufyCam Solo / Solo Pro



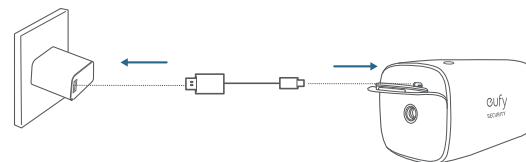
1. LED Indicator
2. Camera Lens
3. Microphone
4. Motion Sensor
5. Photosensitive Sensor



6. Micro USB Charging Port
7. Mounting Hole
8. SYNC Button
  - Press for 2s to enter setup mode
  - Press for 8s to reset

## 3 / CHARGING YOUR EUFYCAM SOLO / SOLO PRO

eufyCam Solo / Solo Pro comes with a built-in battery. Before setup, fully charge your eufyCam Solo / Solo Pro using the provided micro USB cable.



Solid blue	Charging
Fully charged	Off

## 4 / SETTING UP EUFYCAM SOLO / SOLO PRO

1. Download the eufy Security app from the App Store (iOS devices) or Google Play (Android devices).



Download on the  
App Store

GET IT ON  
Google Play

2. Sign up for a eufy Security account. Go to the app homepage. Tap **Add Device**, and add eufyCam Solo / Solo Pro to the system.
3. Follow the on-screen instructions to complete the setup.

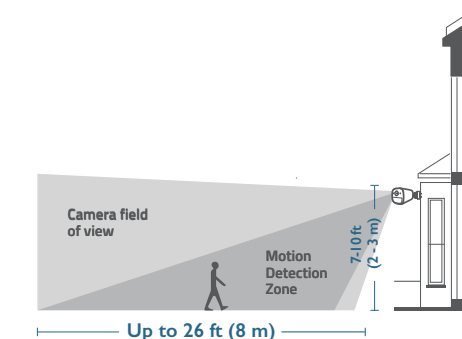
### LED Status

Status	LED Indicator
Ready for setup	Flashing blue
Successfully paired	Off
Live streaming or recording	Solid red (When LED is enabled)
An alarm triggered	Flashing red
Firmware updating	Flashing blue and red alternately

## 5 / MOUNTING EUFYCAM SOLO / SOLO PRO

### Select a Location

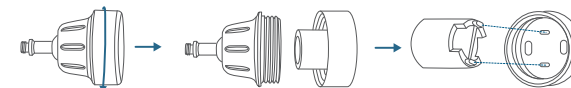
eufyCam Solo / Solo Pro can be mounted on a wall or ceiling. Select a location where you can get the desired view. We recommend hanging it 7-10 ft (2-3 m) above the ground.



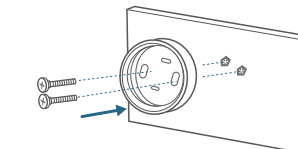
### Mount eufyCam Solo / Solo Pro

eufyCam Solo / Solo Pro can be mounted both outdoors and indoors.

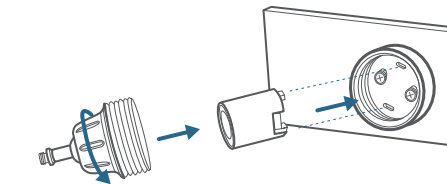
1. Turn the knob of the mounting bracket clockwise to loosen and disassemble it.



2. Place the mounting bracket against the wall. Drill holes with a 15/64 inch (5.99 mm) drill bit, then insert the anchors into the holes; anchors are necessary for walls that are made out of hard materials such as concrete, brick, or stucco.



3. Firmly screw the base of the mounting bracket onto the wall. Fasten the ball knob of the bracket to the base of the bracket.





4. Tighten eufyCam Solo / Solo Pro to the mounting bracket. Rotate the eufyCam Solo / Solo Pro to adjust the view and check it using the live stream which you can access in the eufy Security app.



eufyCam Solo / Solo Pro can be also installed on the ceiling. Follow the steps 1-4 mentioned above to install it.

You are now all set to use your eufyCam Solo / Solo Pro.

**Tips:**

For troubleshooting, check Help on the eufy Security app. Refer to the app page for LED indicator status.

## 6 / NOTICE

### FCC Statement

This device complies with Part 15 of the FCC Rules. Operation is subject to the following two conditions: (1) this device may not cause harmful interference, and (2) this device must accept any interference received, including interference that may cause undesired operation.

**Warning:** Changes or modifications not expressly approved by the party responsible for compliance could void the user's authority to operate the equipment.

**Note:** This equipment has been tested and found to comply with the limits for a Class B digital device, pursuant to Part 15 of the FCC Rules. These limits are designed to provide reasonable protection against harmful interference in a residential installation.

This equipment generates, uses and can radiate radio frequency energy and, if not installed and used in accordance with the instructions, may cause harmful interference to radio communications. However, there is no guarantee that interference will not occur in a particular installation. If this equipment does cause harmful interference to radio or television reception, which can be determined by turning the equipment off and on, the user is encouraged to try to correct the interference by one or more of the following measures: (1) Reorient or relocate the receiving antenna. (2) Increase the separation between the equipment and receiver. (3) Connect the equipment into an outlet on a circuit different from that to which the receiver is connected. (4) Consult the dealer or an experienced radio/TV technician for help.

### FCC Radio Frequency Exposure Statement

The device has been evaluated to meet general RF exposure requirements. The device can be used in fixed/mobile exposure condition. The min separation distance is 20 cm.

**Notice:** Shielded cables

All connections to other computing devices must be made using shielded cables to maintain compliance with FCC regulations.

The following importer is the responsible party.  
Company Name: POWER MOBILE LIFE, LLC  
Address: 400 108th Ave NE Ste 400, Bellevue, WA 98004-5541  
Telephone: 1-800-988-7973



This product complies with the radio interference requirements of the European Community.

### Declaration of Conformity

Hereby, Anker Innovations Limited declares that this device is in compliance with the essential requirements and other relevant provisions of Directive 2014/53/EU. For the declaration of conformity, visit the Web site: <https://uk.eufylife.com/>. This product can be used across EU member states.

Due to the used enclosure material, the product shall only be connected to a USB Interface of version 2.0 or higher.

The adapter shall be installed near the equipment and shall be easily accessible. Do not use the Device in the environment at too high or too low temperature, never expose the Device under strong sunshine or too wet environment.

The suitable temperature for T8130X and accessories is 0°C-40°C.

When charging, please place the device in an environment that has a normal room temperature and good ventilation. It is recommended to charge the device in an environment with a temperature that ranges from 5°C~25°C.

RF exposure information: The Maximum Permissible Exposure (MPE) level has been calculated based on a distance of d=20 cm between the device and the human body. To maintain compliance with RF exposure requirement, use product that maintain a 20cm distance between the device and human body.

CAUTION RISK OF EXPLOSION IF BATTERY IS REPLACED BY AN INCORRECT TYPE. DISPOSE OF USED BATTERIES ACCORDING TO THE INSTRUCTIONS

Wi-Fi Operating Frequency Range: 2412~2472MHz; Wi-Fi Max Output Power: 18.51dbm(EIRP)

The following importer is the responsible party (contact for EU matters only)  
Anker Innovations Deutschland GmbH | Georg-Mueller-Strasse 3, 80807 Munich, Germany



This product is designed and manufactured with high quality materials and components, which can be recycled and reused.



This symbol means the product must not be discarded as household waste, and should be delivered to an appropriate collection facility for recycling. Proper disposal and recycling helps protect natural resources, human health and the environment. For more information on disposal and recycling of this product, contact your local municipality, disposal service, or the shop where you bought this product.

### IC Statement

This device complies with Industry Canada licence-exempt RSS standard(s).

Operation is subject to the following two conditions:

(1) this device may not cause interference, and  
(2) this device must accept any interference, including interference that may cause undesired operation of the device."

Le présent appareil est conforme aux CNR d'Industrie Canada applicables aux appareils radio exempts de licence. L'exploitation est autorisée aux deux conditions suivantes:

(1) l'appareil n doit pas produire de brouillage, et  
(2) l'utilisateur de l'appareil doit accepter tout brouillage radioélectrique subi, même si le brouillage est susceptible d'en compromettre le fonctionnement."

This Class B digital apparatus complies with Canadian ICES-003.

Cet appareil numérique de la classe B est conforme à la norme NMB-003 du Canada.

### UK RF Statement:

When using the product, maintain a distance of 20cm from the body to ensure compliance with RF exposure requirements.

Lors de l'utilisation du produit, maintenez une distance de 20 cm du corps afin de vous conformer aux exigences en matière d'exposition RF.



This product complies with the radio interference requirements of the United Kingdom

### Declaration of Conformity

Hereby, Anker Innovations Limited declares that this product is in compliance with Radio Equipment Regulations 2017. The full text of the UK declaration of conformity is available at the following internet address: <https://uk.eufylife.com>

Anker Technology (UK) Ltd | Suite B, Fairgate House, 205 Kings Road, Tulseley, Birmingham, B11 2AA, United Kingdom

## Customer Service

Warranty

12-month limited warranty

Call Us

United States  
+1 (800) 988 7973 Mon-Fri 9AM-5PM (PT)

United Kingdom

+44 (0) 1604 936 200 Mon-Fri 6AM-11AM (GMT)

Germany

+49 (0) 69 9579 7960 Mon-Fri 6:00-11:00

Email Us

Customer Support: [support@eufylife.com](mailto:support@eufylife.com)

Anker Innovations Limited

Room 1318-19, Hollywood Plaza, 610 Nathan Road, Mongkok, Kowloon, Hong Kong

@EufyOfficial

@EufyOfficial

@EufyOfficial

Anker Innovations Limited. All rights reserved. eufy Security and eufy Security Logo are trademarks of Anker Innovations Limited, registered in the United States and other countries. All other trademarks are the property of their respective owners.

51005002284 V04