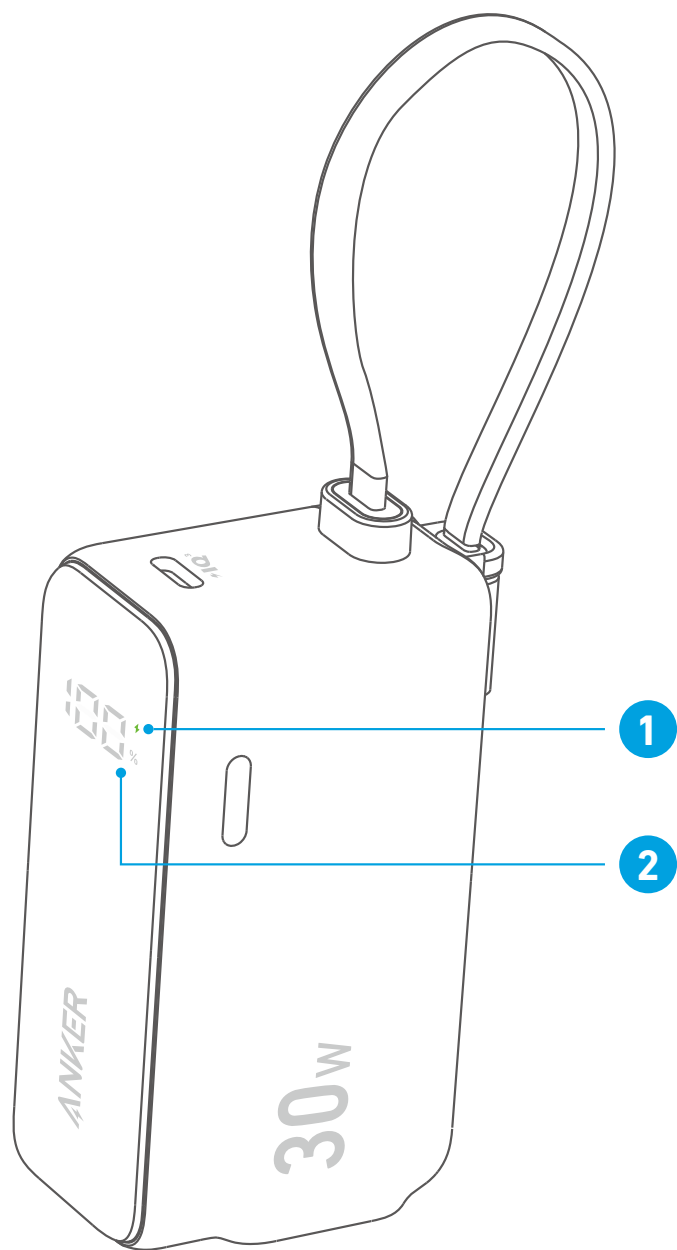


Checking the Battery Level

Press the button once to turn the screen on or off.

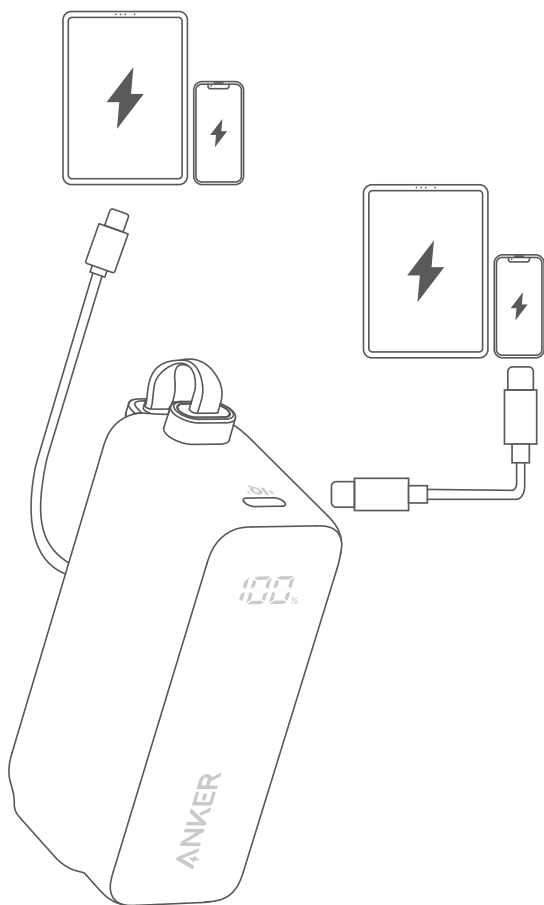


- 1. Recharging
- 2. Remaining Battery Percentage

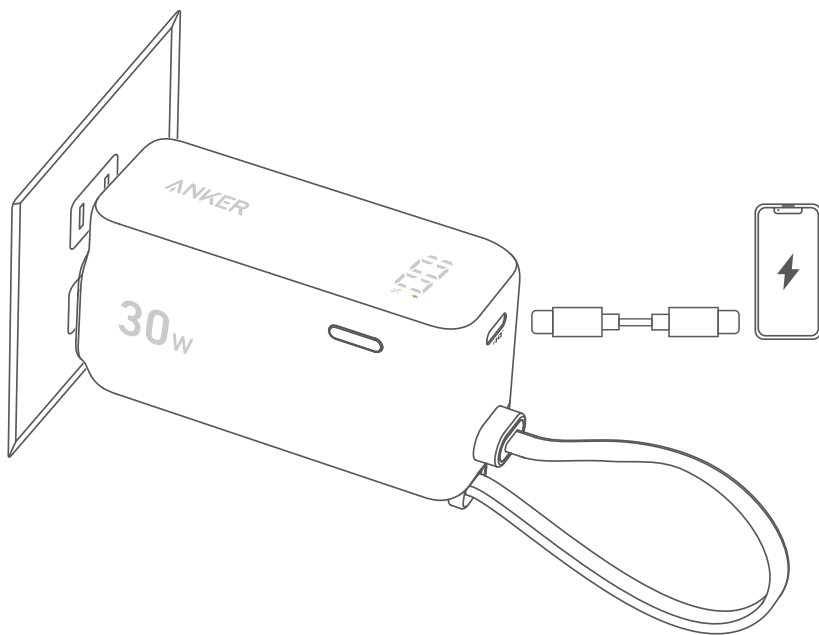
Charging Your Devices

Charge your devices via the built-in USB-C cable or USB-C port.

Battery Mode



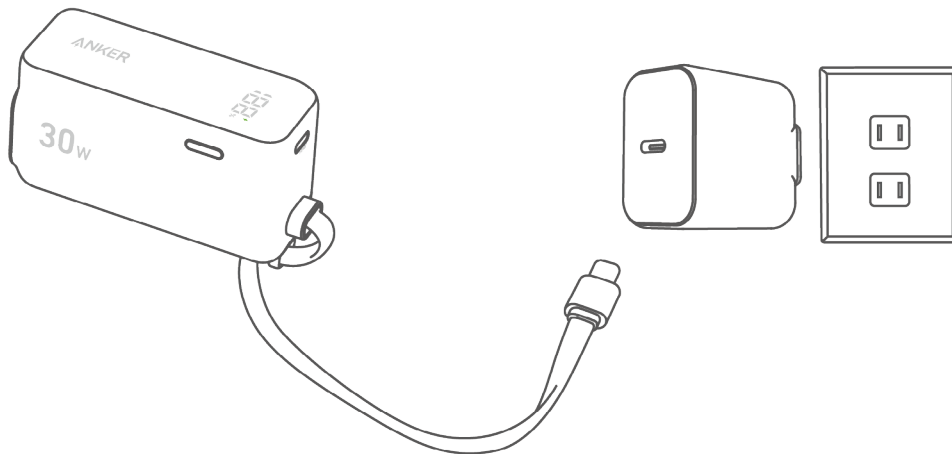
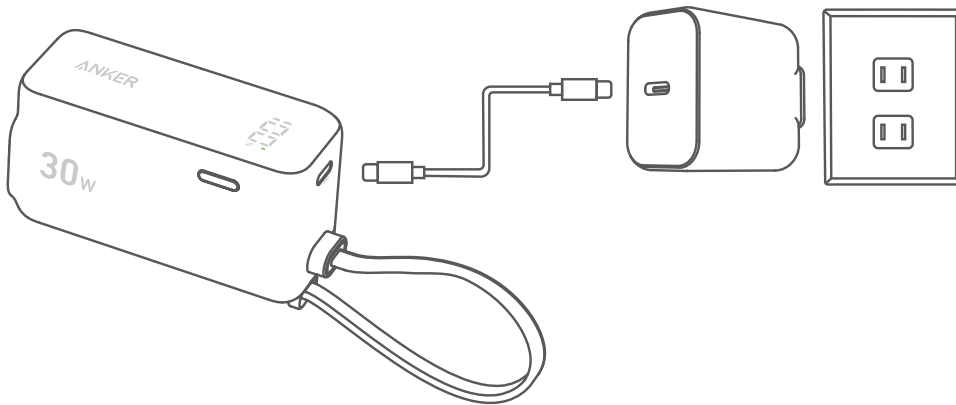
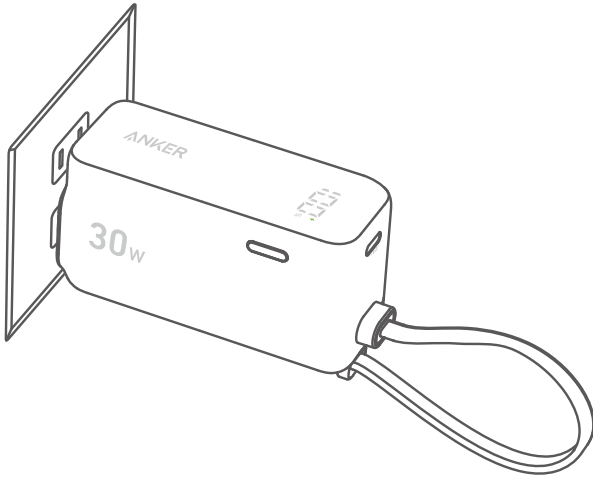
Charger Mode



Recharging Your Power Bank

Three ways to charge the power bank:

1. Plug it into a power outlet;
2. Recharge via the USB-C port.
3. Charge via the built-in USB-C cable.



Specifications

Cell Capacity	5,000mAh
Input	USB-C cable / USB-C port: 5V ≡ 3A AC: 100V-240V ~ 50-60Hz 1.5A
Output	Battery Mode: 5V ≡ 3A / 9V ≡ 2.22A / 10V ≡ 2.25A Charger Mode: 5V ≡ 3A / 9V ≡ 3A / 10V ≡ 2.25A / 15V ≡ 2A / 20V ≡ 1.5A
Total Output	Battery Mode: 5V ≡ 3A Charger Mode: 5V ≡ 3.6A