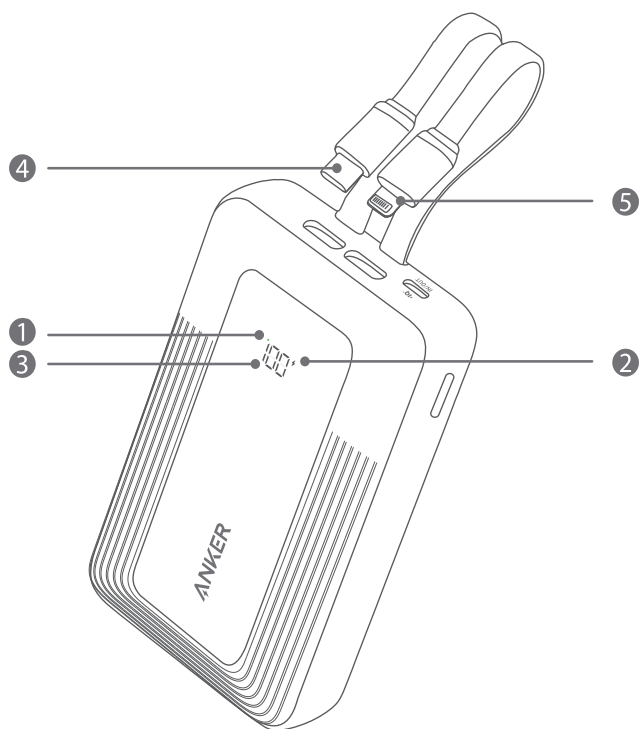
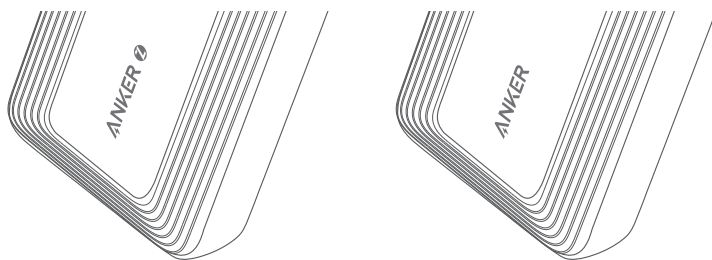


## Checking the Battery Level



- ① Trickle-Charging Mode
- ② Recharging
- ③ Remaining Battery Percentage
- ④ USB-C Cable
- ⑤ Lightning Cable

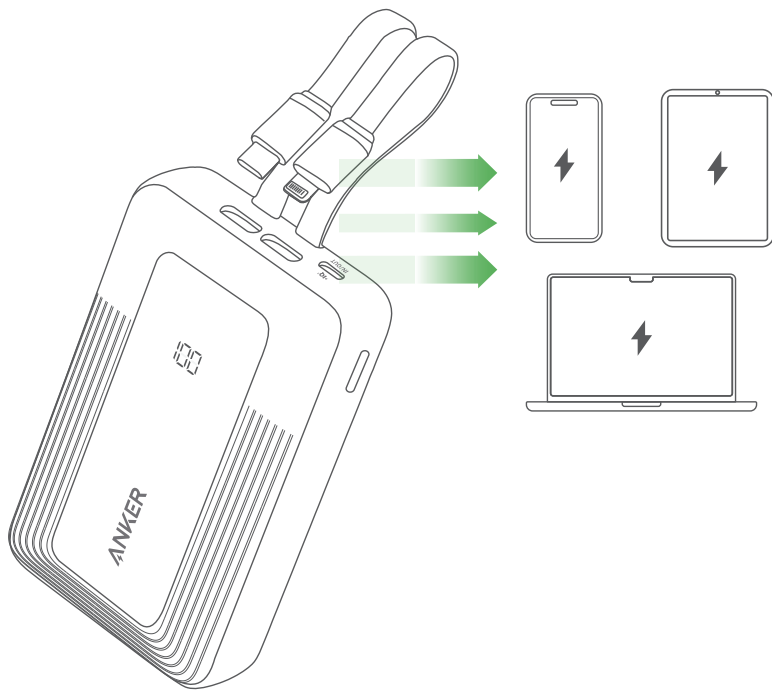


**\*Note:** In the recent period, power banks featuring either of the two logo versions shown above will be shipped randomly. Aside from the logo, the functionality of the products remains identical. Please be assured of the product's quality.

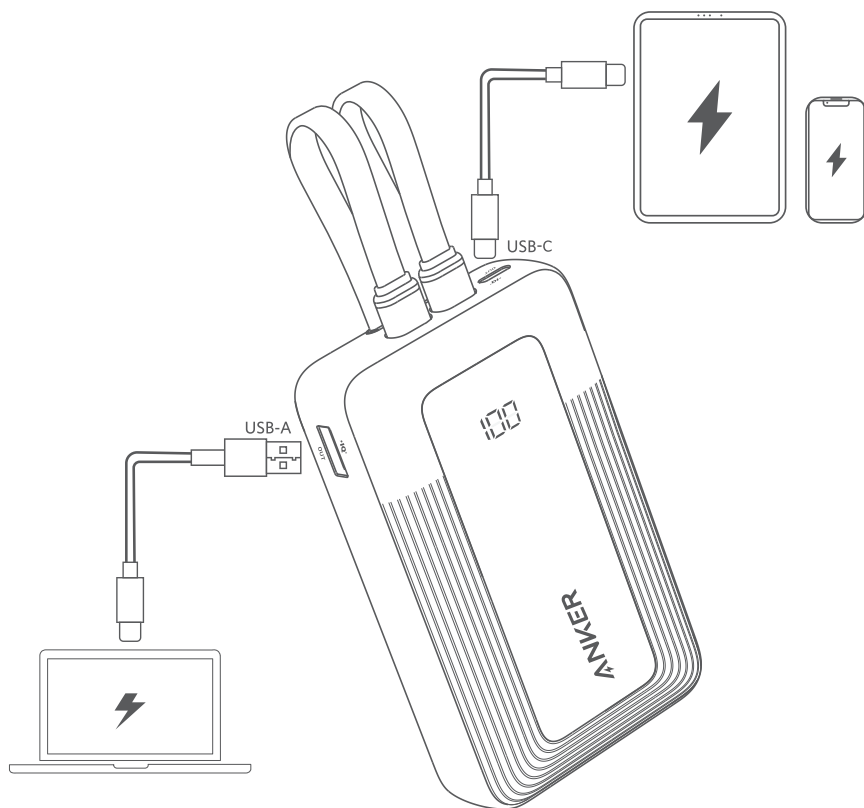
## Charging Your Devices

Charge your phones and tablets via the built-in USB-C and Lightning cables or USB ports.

With the built-in USB-C and Lightning cables:

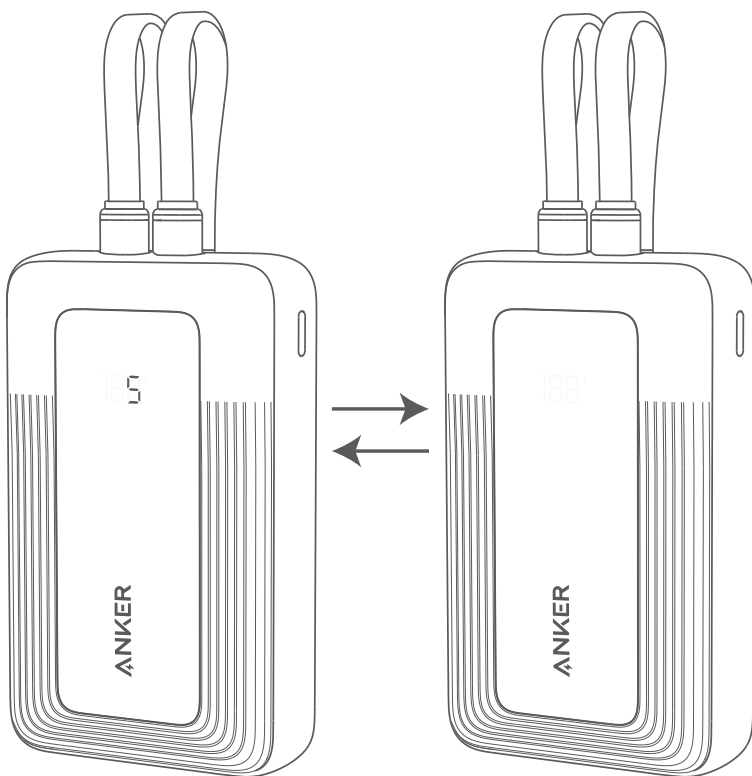


With the USB ports:



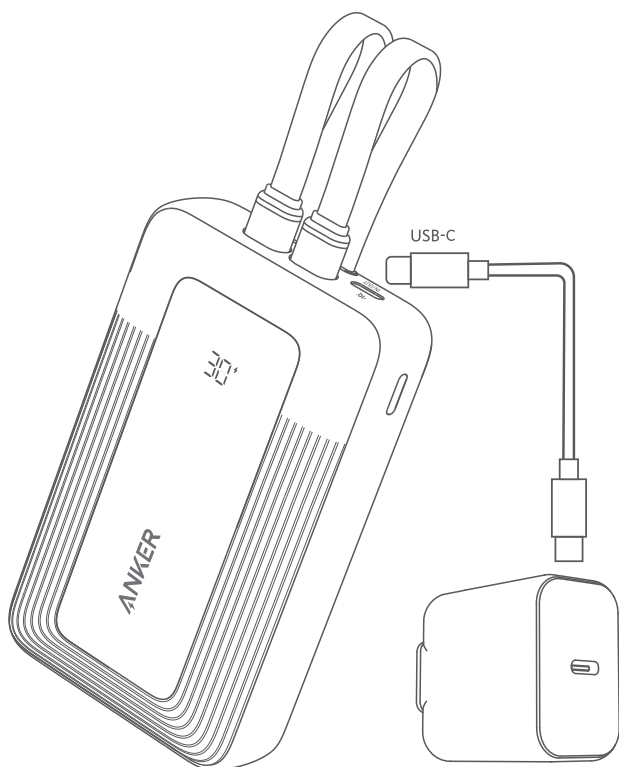
## Smart Charging Reminder

When the battery level falls to 5%, the battery indicator on the screen will flash, reminding you to charge the power bank promptly.



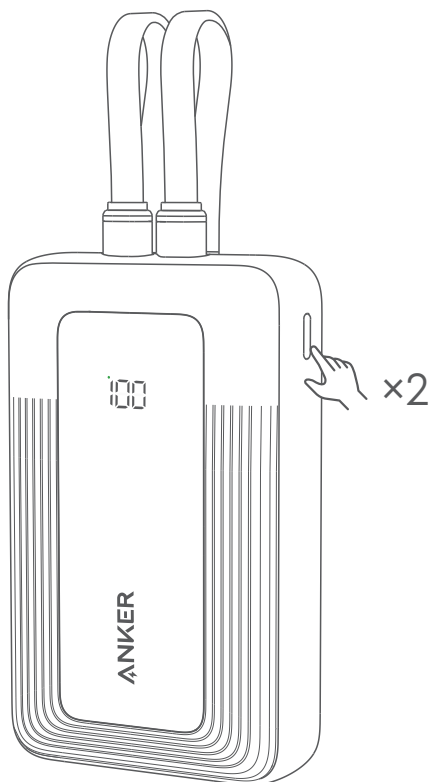
## Recharging Your Power Bank

Recharge the power bank via the built-in USB-C cable or USB-C port.

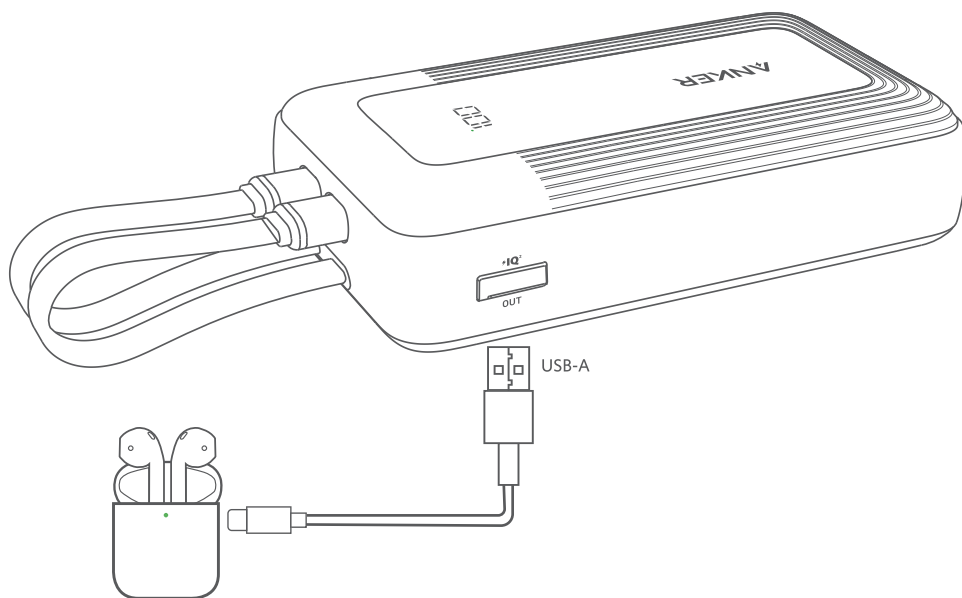


## Trickle-Charging Mode

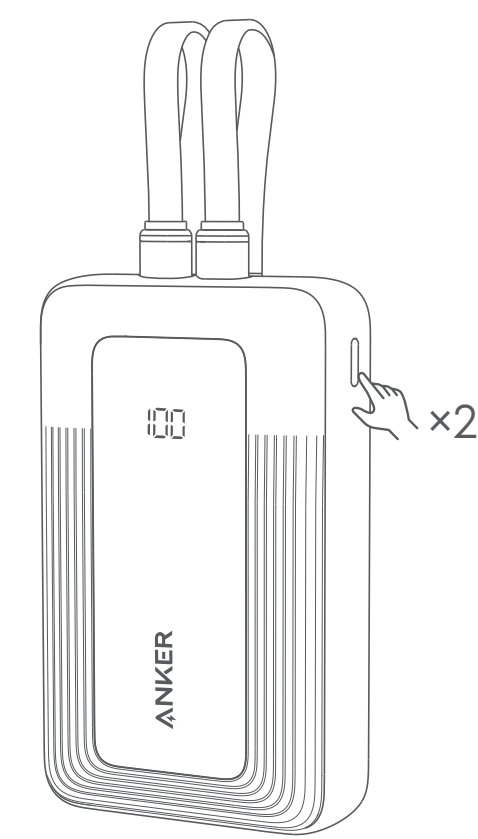
1. Press the power button twice to activate trickle charging mode.



2. Charge your earbuds or other low-power devices via the USB-A port.



3. Press the power button twice to exit trickle charging mode.



Specifications

Cell Capacity	10,000 mAh
Battery Capacity	5,000 mAh 7.4 VDC / 37 Wh (Two Cells in Series)
Input	USB-C Cable / USB-C Port: 5V ≡ 3A / 9V ≡ 2.22A / 12V ≡ 1.66A (20W Max)
Output	USB-C Cable / USB-C Port: 5V ≡ 3A / 9V ≡ 3A / 10V ≡ 2.25A / 12V ≡ 2.5A / 15V ≡ 2A / 20V ≡ 1.5A (30W Max)
	Lightning Cable: 5V ≡ 3A / 9V ≡ 3A (27W Max)
	USB-A Port: 5V ≡ 3A / 9V ≡ 2A / 10V ≡ 2.25A / 12V ≡ 1.5A (22.5W Max)
Total Output	5V ≡ 3A (15W Max)