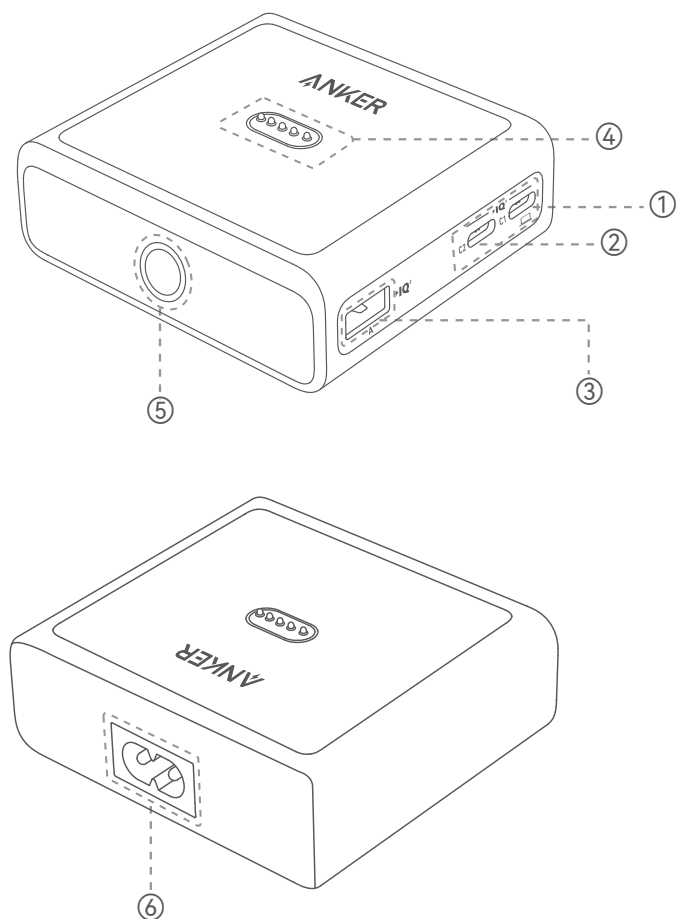


Product Overview

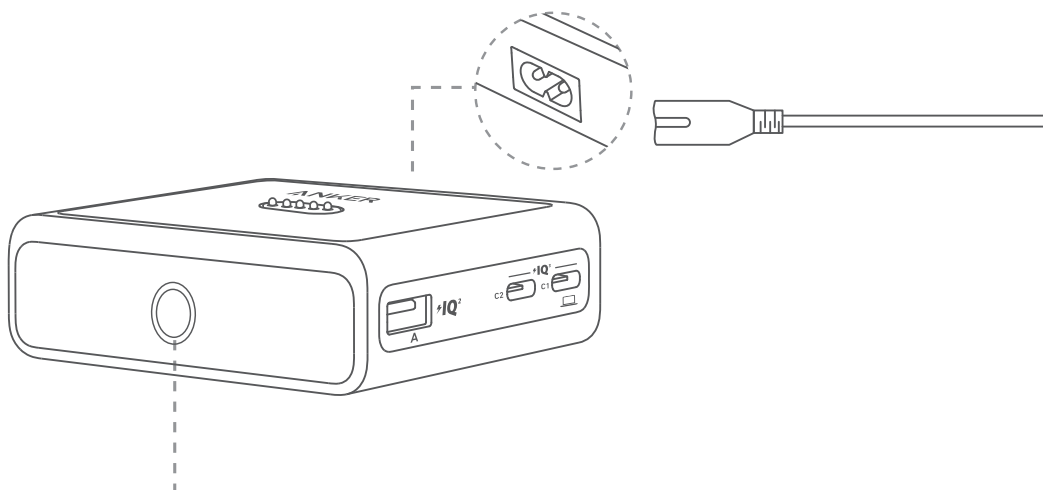


- ① USB-C1
- ② USB-C2
- ③ USB-A
- ④ Pogo Pin (charging connector)
- ⑤ LED Indicator
- ⑥ AC Input Port

Note: To ensure optimal compatibility and an enhanced charging experience, the Pogo Pin (charging connector) on Anker 100W Charging Base have been slightly raised. This adjustment does not affect the product's quality, charging performance, or durability. The method of use remains unchanged.

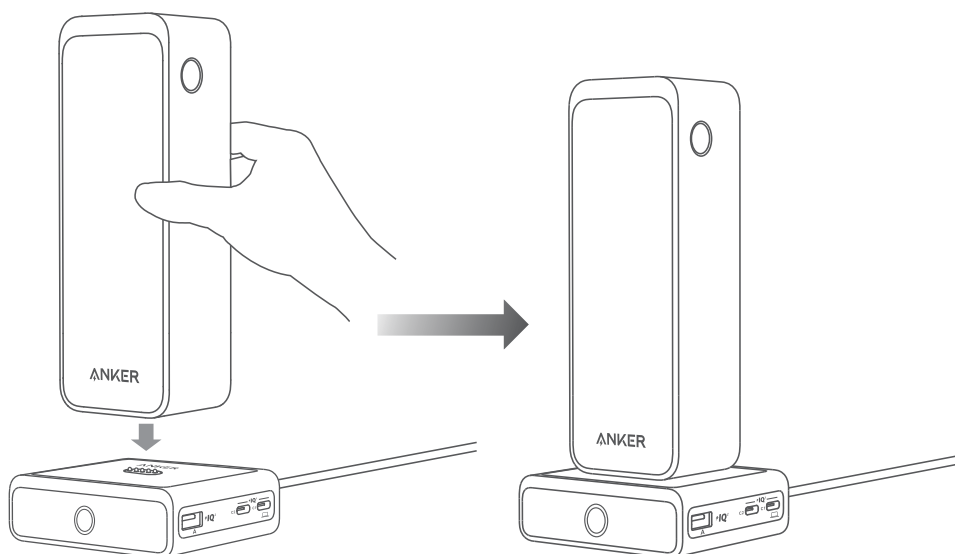
Recharging the Power Bank

1



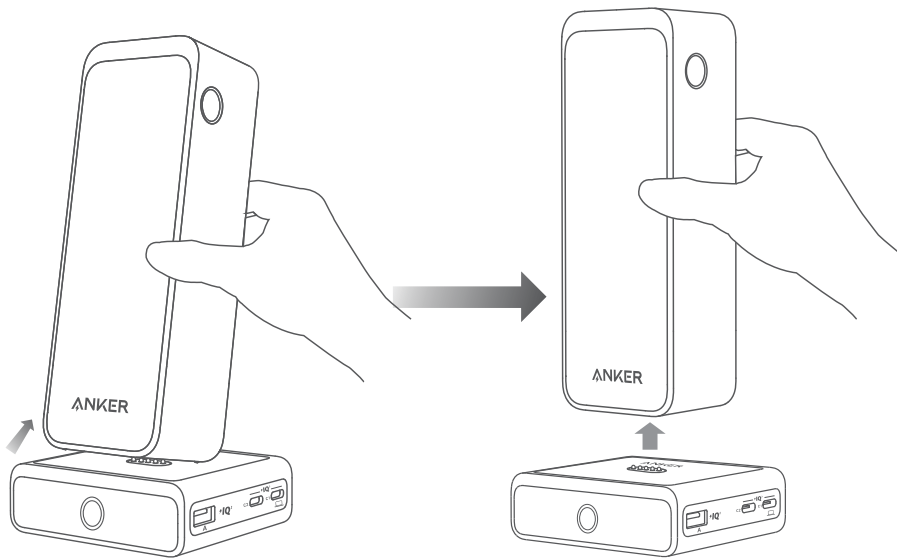
Pulsing White Light: Power Bank is Recharging
Solid White Light: Power Bank is Fully Recharged
Rapid Pulsing White Light: AC Power is On

2

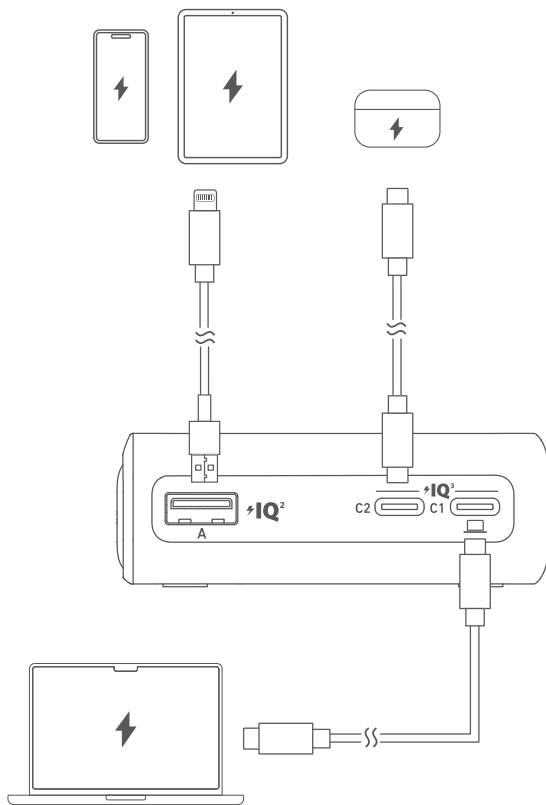


Note: The power bank cannot provide output while it is recharging on the stand.

Picking Up the Power Bank



Charging Your Devices



Specifications

Input	100-240V~2A 50-60Hz
USB-C1 Output	5.0V \equiv 3.0A, 15.0W / 9.0V \equiv 3.0A, 27.0W / 12.0V \equiv 1.5A, 18.0W / 15.0V \equiv 3.0A, 45.0W / 20.0V \equiv 5.0A, 100.0W
USB-C2 Output	USB-C2 Output: 5.0V \equiv 3.0A, 15.0W / 9.0V \equiv 3.0A, 27.0W / 12.0V \equiv 1.5A, 18.0W / 15.0V \equiv 2.0A, 30.0W / 20.0V \equiv 1.5A, 30.0W
USB-A Output	5.0V \equiv 3.0A, 15.0W / 9.0V \equiv 2.0A, 18.0W / 12.0V \equiv 1.5A, 18.0W
Pogo Pin Output	21.5V \equiv 4.65A, 100.0W
Total Output	100.0W Max
PPS	Supports PPS
Operating Temperature	0° - 25°C / 32 °F - 77 °F

Note: To ensure electrical safety and product performance, the output power may fluctuate based on the ActiveShield™* safety mechanism when the ambient temperature is between 26 - 35°C (78.8 - 95°F) with a high output load.

*ActiveShield™ enhances protection by intelligently monitoring temperature and adjusting power output to safeguard your connected devices.

Please refer the information on exterior bottom enclosure.

Default exposed network interfaces and services

BLE (Bluetooth Low Energy) Configuration

Status Description: When the device is not yet connected to a network, it will automatically enable BLE broadcasting and activate BLE services to provide Bluetooth network configuration capabilities.

Notes

During BLE configuration processes, please ensure your network environment is stable and follow the device's instructions to complete the setup.