

**Disclaimer**

**What's in the Box**

**Product Overview**

**LED Indicator**

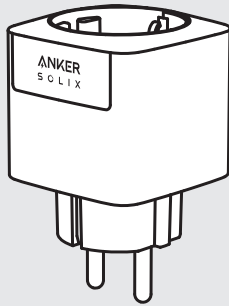
**Using the App**

**Specification**

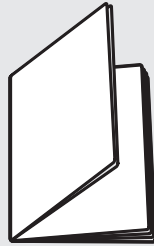
## Disclaimer

Read this user manual carefully before using the product to ensure that you completely understand the product and can correctly use it. After reading this user manual, keep it properly for future reference. Improper use of this product may cause serious injury to yourself or others, or cause product damage and property loss. Once you use this product, it is deemed that you understand, approve and accept all the terms and content in this document. Anker SOLIX is not liable for any loss caused by the user's failure to use this product in compliance with this user manual. In compliance with laws and regulations, Anker SOLIX reserves the right to final interpretation of this document and all documents related to this product. This document is subject to changes (updates, revisions, or termination) without prior notice. Please visit Anker SOLIX website to obtain the latest product information.

## What's in the Box

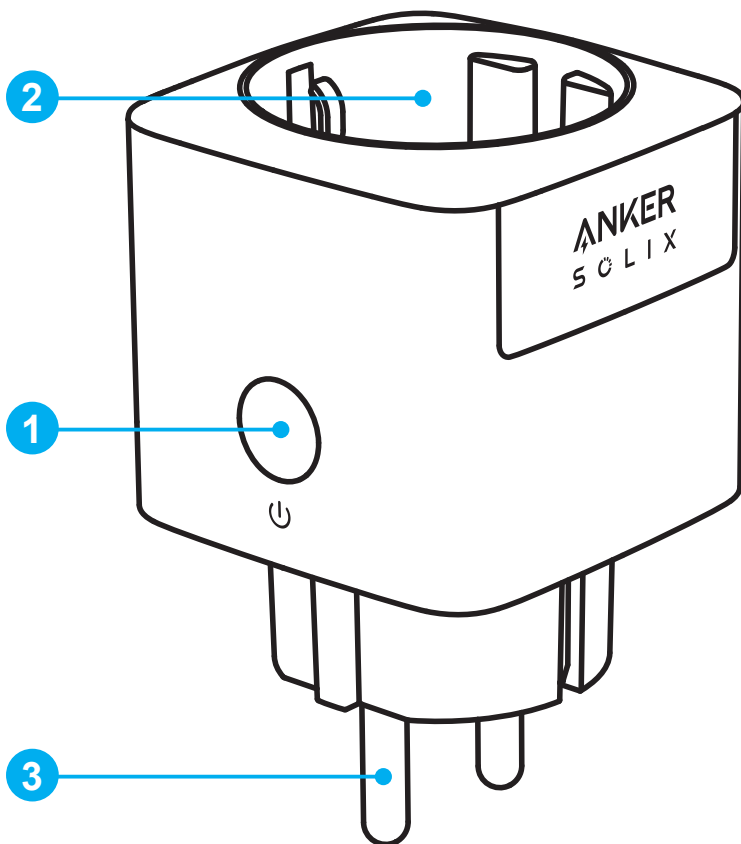


Anker SOLIX Smart Plug



Important Safety Instructions

## Product Overview



### ① On/Off Button

Press for 2 seconds to turn on/off the plug.

Press for 7 seconds to reset the network configuration mode.

### ② Socket

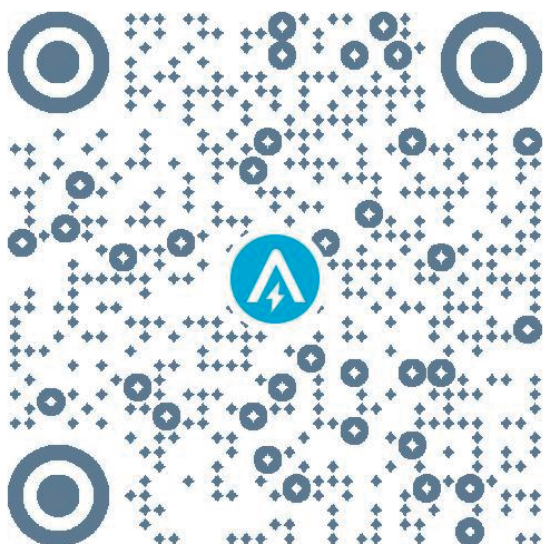
### ③ Plug

## LED Indicator

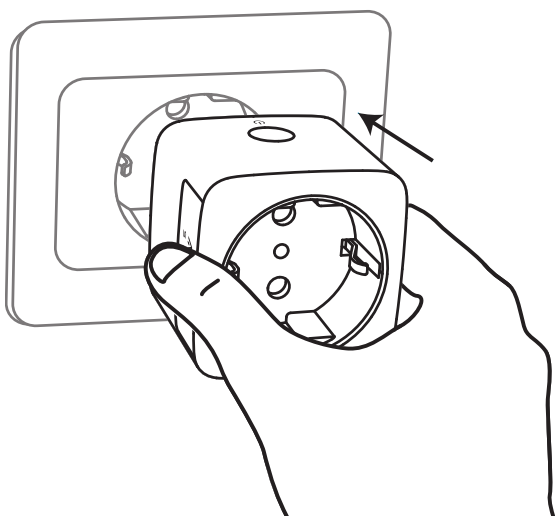
Color	LED Status	Description
Green	Slowly flashing	Press the on/off button for 2 seconds to start the network configuration.
	Quickly flashing	Locating and searching for network.
	Solid	Network configuration successful.
Red	Slowly flashing	The socket is faulty.

## Using the App

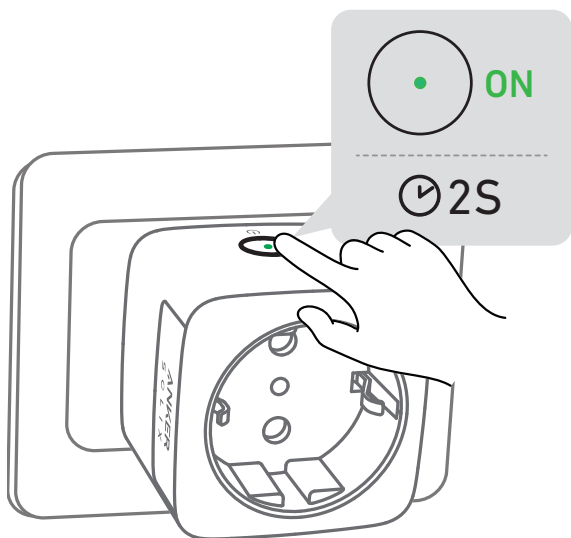
1. Search "Anker" and download the Anker app via App Store or Google Play. Or scan the QR code below to go to your app store.



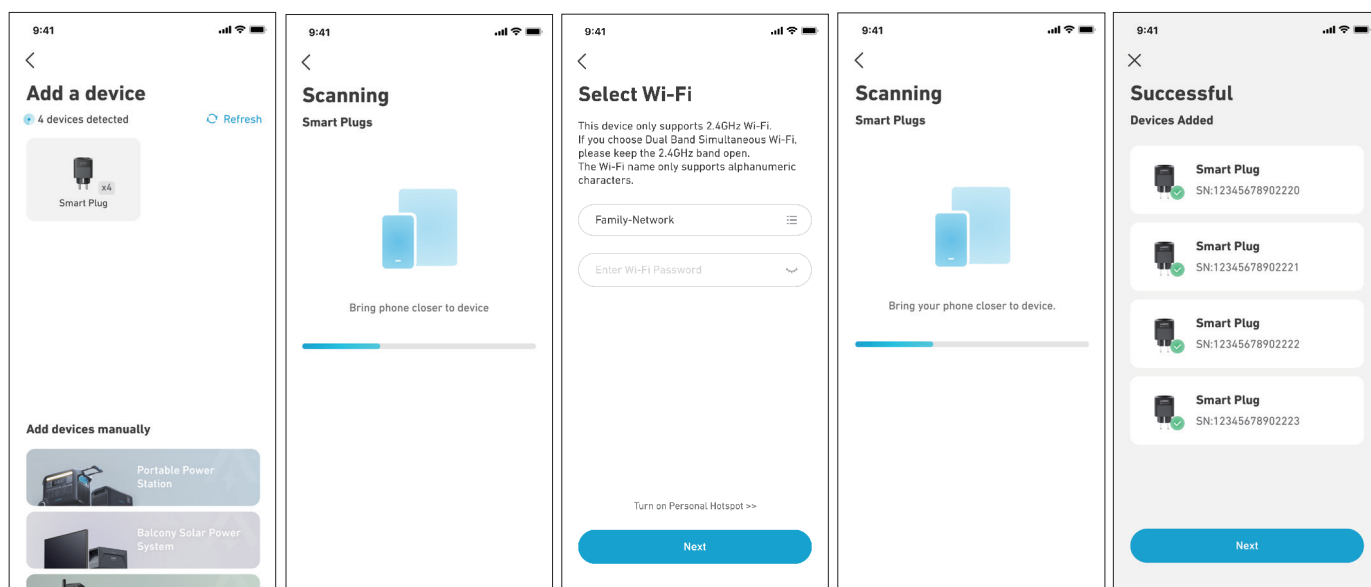
2. Plug in Smart Plug.



3. Press for 2 seconds to turn on the plug. The indicator will turn green and fade in and out slowly.



4. Complete the network configuration on the Anker app.



## Specification

Operation Temperature	-20°C -40°C
Voltage	220-240Vac, 50/60Hz
Current	10A
Communication	Wi-Fi (2.4G)
	Bluetooth
Dimensions (W*H*D)	50*50*83.5mm

## Network Configuration Instructions

Bluetooth Low Energy (BLE) Status: When the equipment is not yet connected to a network, it will automatically enable BLE broadcasting and activate BLE services to provide Bluetooth network configuration capabilities.

**Note:** During the BLE configuration process, ensure your network environment is stable and follow the instructions to complete the setup.

### Port 5353

The primary function of port 5353 (TCP/UDP 5353) in a network is to implement the mDNS protocol for mutual discovery between devices on the local area network (LAN).

Application Scenarios: Multi-device linkage, self-consumption scenarios, and energy scheduling strategies in the LAN.

Access the device via `hostname.local` on the same local area network without traditional DNS configuration.

mDNS Protocol Characteristics: Using UDP protocol, port 5353 is its standard port, compatible with the standard DNS query format.