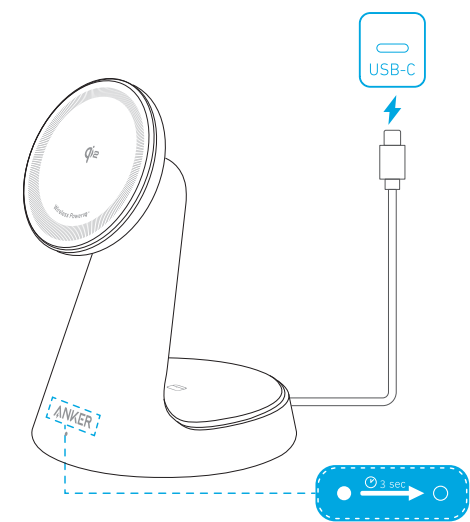


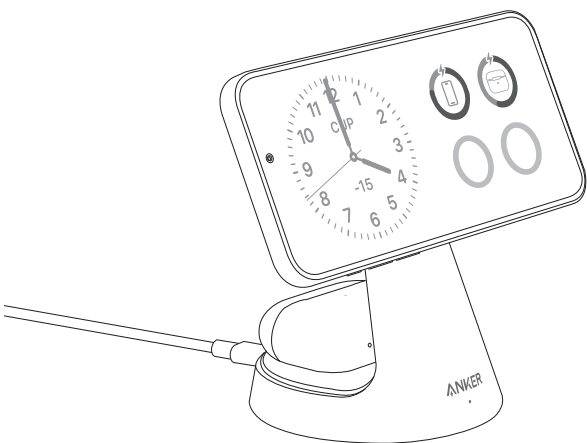
Using Your Product

1. Connect to a Power Outlet



Note: For fast charging, use a Power Delivery adapter of 30W or higher. However, an adapter of 18W can also be used without causing errors.

2. Charge Your Phone or Wireless Earbuds



LED Light Guide

LED Indicator	Status
Solid White for 3 Seconds, Then Off	Connecting to power.
Solid White for 5 Seconds, Then Off	Charging your wireless earbuds.
Fast Flashing (Every 0.25 Seconds)	Metal objects detected. Remove any metal objects from the charging surface to ensure proper function.
Slow Flashing (Once Every Second)	Incompatible AC adapter detected. Use a Quick Charge 2.0/3.0 or Power Delivery adapter with a minimum output of 18W. For optimal performance, a 30W adapter or higher is recommended.

FAQ

Q: Is the wireless charger compatible with Android phones?

A: This wireless charger is designed exclusively for iPhones that support magnetic wireless charging, starting with iPhone 12 and later models.

Q: Can a phone case affect wireless charging?

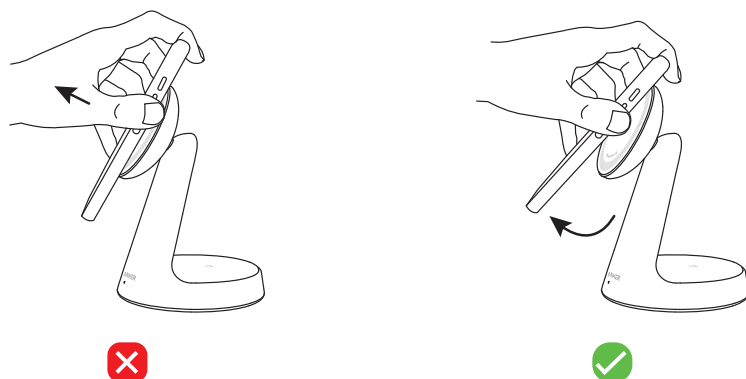
A: For the best wireless charging experience, we recommend using Apple's official magnetic phone cases. Cases over 2.5 mm thick or non-magnetic may reduce charging efficiency.

Q: Is the product safe to use when it gets warm/hot?

A: It's normal for wireless chargers to warm up slightly, especially during intensive use, such as long gaming or streaming sessions. However, it complies with international safety standards, including EN 62368-1 and IEC 62368-1, guaranteeing safe usage.

Q: The charger lifts when I try to remove my phone. How can I prevent this?

A: Follow the phone removal technique shown in the guide that comes with your wireless charger. This method helps prevent the charger from moving when you detach your phone.



Q: Is there a recommended adapter to use with the product for wireless charging?

A: If using a third-party adapter, select one that supports an output of 30W or higher with the PD protocol to ensure adequate charging speeds, while using an adapter of 18W will not cause an error.

Compatible Devices

	iPhone 15 / 14 / 13 / 12 Series
	AirPods (With Wireless Charging Case)

Specifications

Input	9V \equiv 3A / 12V \equiv 2.5A / 15V \equiv 2A
Output	Phone: 15W Max TWS Earbuds: 5W Max