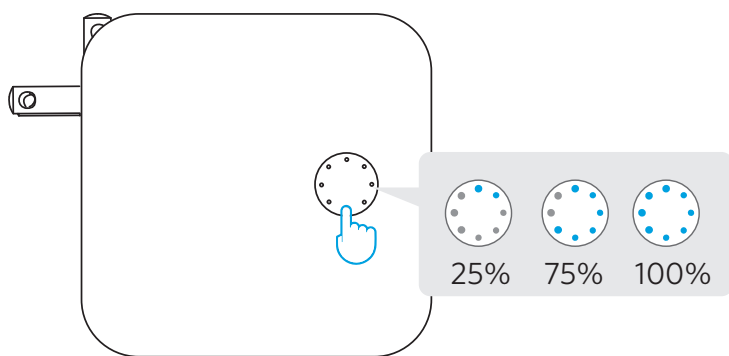


Checking the Battery Level

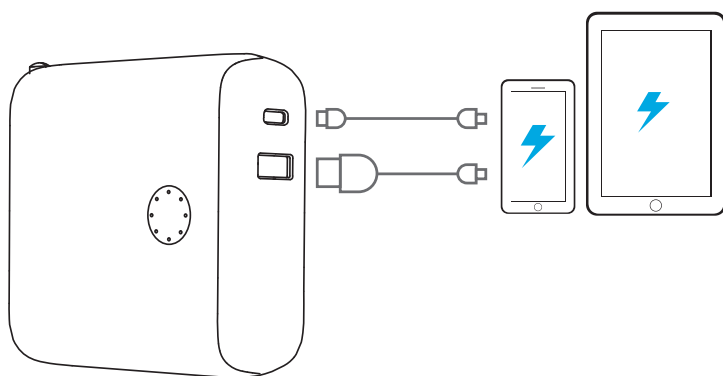
Press the button to check the battery level.



Charging Your Devices

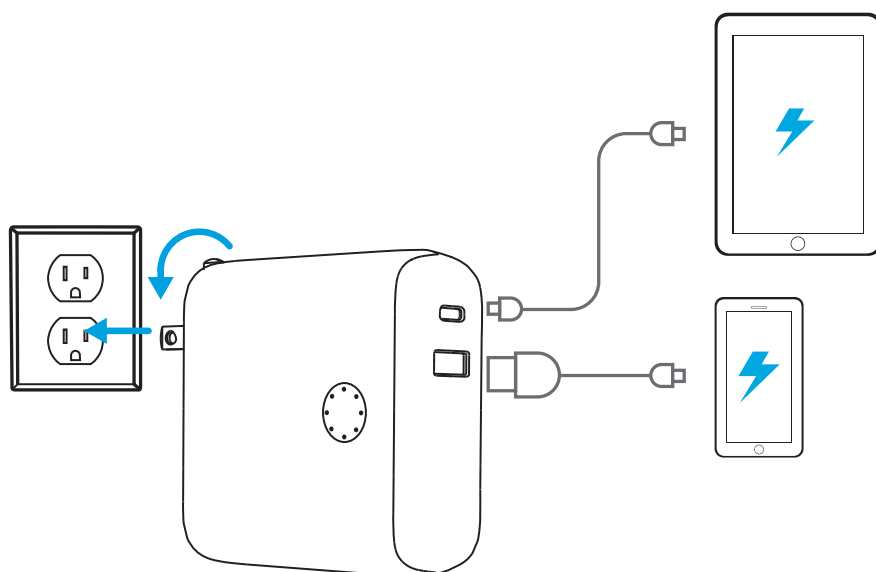
Power Bank Mode

Charge your devices via the USB ports.



Charger Mode

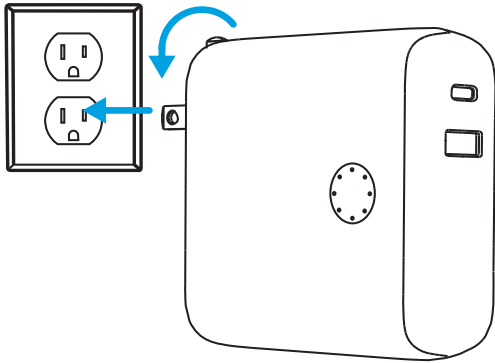
The power bank starts recharging after the connected device is fully charged.



Recharging Your Power Bank

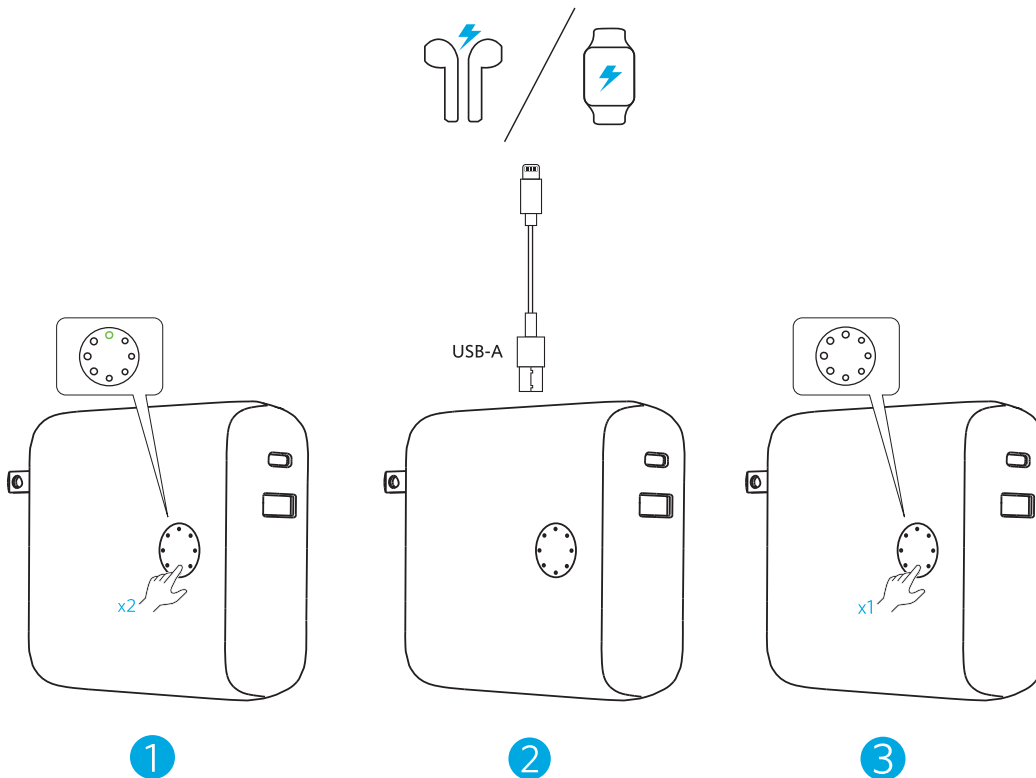
Recharge the power bank by plugging it into a power outlet.

When the power bank is fully charged, the LED indicators will stay on.



Trickle-Charging Mode

1. Press the button twice to activate trickle-charging mode. The LED indicator will turn green.
2. Charge your earbuds or other low-power devices.
3. Press the button once to exit trickle-charging mode.



• For the fastest and safest charge, use an Anker® cable, your device's original cable, or a MFi certified cable.

• To avoid extra power consumption, unplug the connected cable from the power bank when not in use.

Specifications

| | |
|---------------|--------------------------|
| Cell Capacity | 10000 mAh (2 × 5000 mAh) |
| Input | 100-240V ~ 50-60Hz 0.7A |
| USB-A Output | 5V = 2.4A |
| USB-C Output | 5V = 3A / 9V = 2.22A |
| Total Output | 5V = 3A Max |

