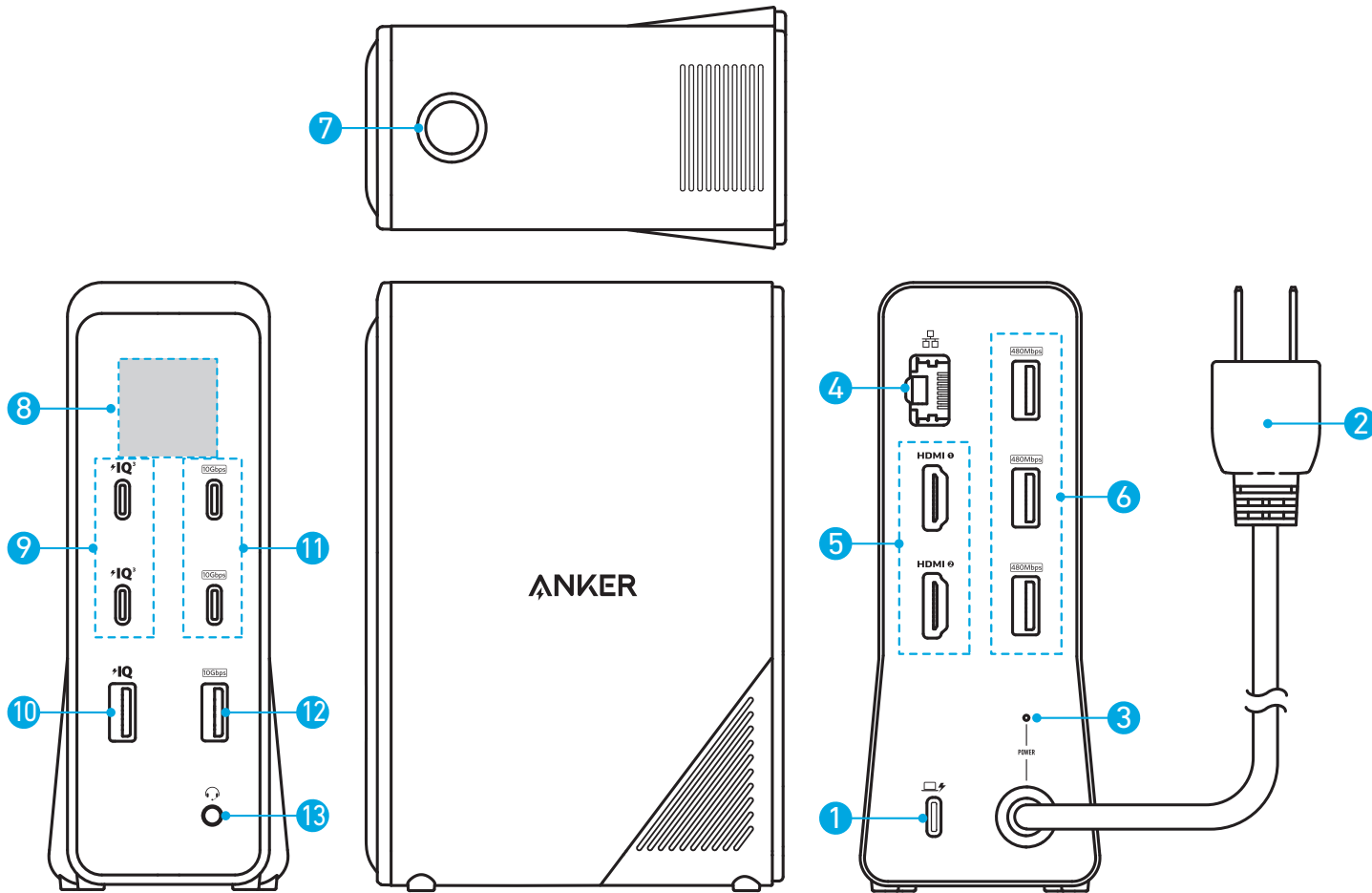


At a Glance



No.	Item	Description
1	USB-C Upstream Port	<ul style="list-style-type: none">• Connect to your laptop using the included USB-C cable.• Provides charging for your laptop at up to 100W PD.• Output: 5V$\overline{\text{---}}$3A / 9V$\overline{\text{---}}$3A / 15V$\overline{\text{---}}$3A / 20V$\overline{\text{---}}$5A (100W Max)
2	AC Power Plug	Connect to a power outlet. 💡 Power plug varies by country or region.
3	Power Indicator	Turns white when the docking station is powered on.
4	Ethernet Port	Connect to a router or modem at 1 Gbps.
5	HDMI 2.0 Port x2	Connect two HDMI-enabled monitors for dual 4K HDMI display output. 💡 Actual display output performance will vary based on the host device specifications. For details, please refer to the Video Resolution and Refresh Rate table below.
6	USB-A Data Transfer Port x3	480Mbps data transfer.
7	Power Button	<ul style="list-style-type: none">• Press to power on or activate the LCD display.• Press and hold for 4 seconds to power off.• When powered on, press to toggle between two homepages (total USB output page and individual front-ports status page); press and hold for 2 seconds to turn off the LCD display.
8	LCD Display	Displays charging output power, data transfer status, firmware upgrade status, and warnings.

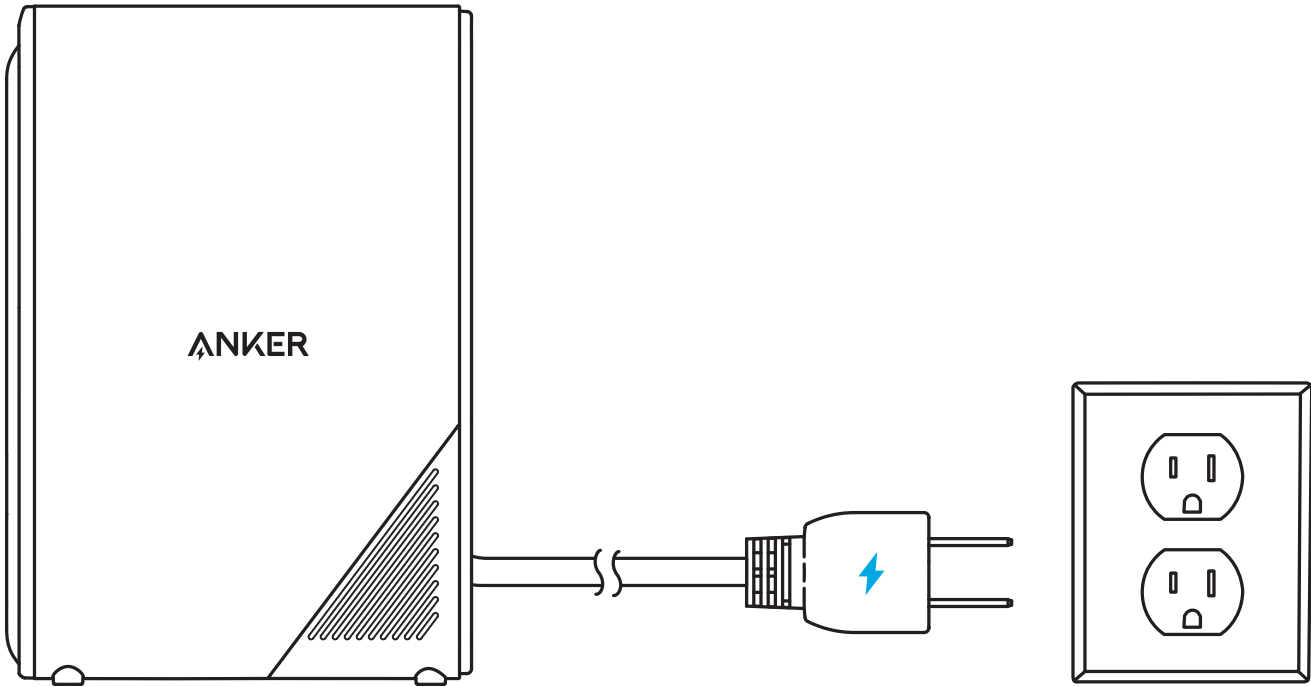
9	USB-C Charging Port x2	<ul style="list-style-type: none">• Charge your phone or tablet at up to 100W with Power Delivery 3.0.• Output: 5V=3A / 9V=3A / 15V=3A / 20V=5A (100W Max)
10	USB-A Charging Port	<ul style="list-style-type: none">• Charge your phone, watch, or earphones at up to 12W.• Output: 5V=2.4A (12W Max)
11	USB-C 3.1 Gen 2 Port x2	10 Gbps data transfer.
12	USB 3.1 Gen 2 Port	10 Gbps data transfer.
13	Audio Jack	Connect to earphones or other devices with a 3.5 mm AUX connector.



- All USB ports do not support screen mirroring.
- When using multiple USB charging ports simultaneously, the maximum total USB output power is 160W.
- Place the charging docking station vertically on a flat surface.

Using Your Product

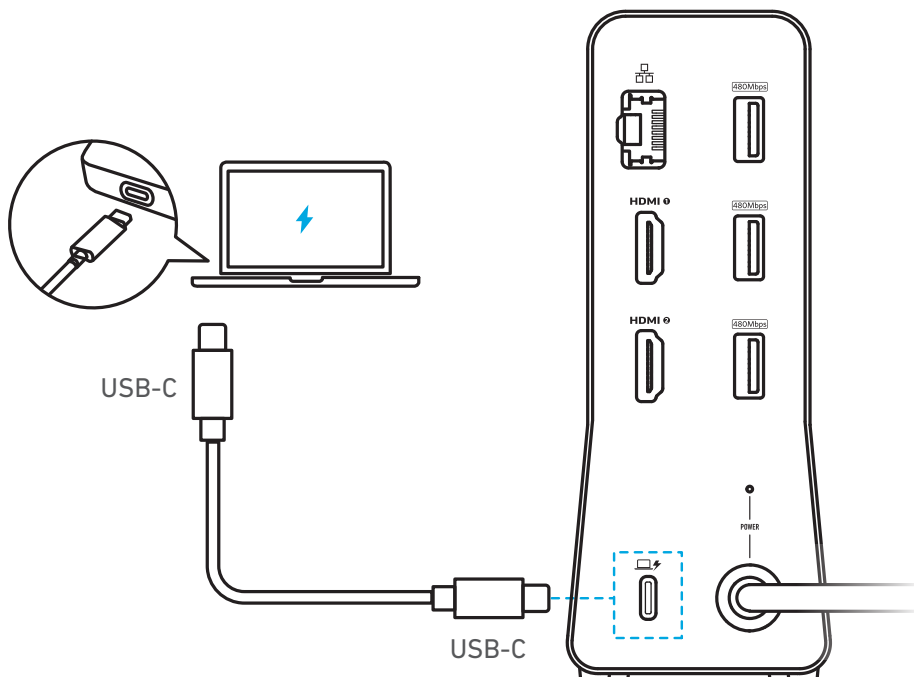
1. Connect the AC power plug to a power outlet.



2. Press the power button. The LCD Display will light up.

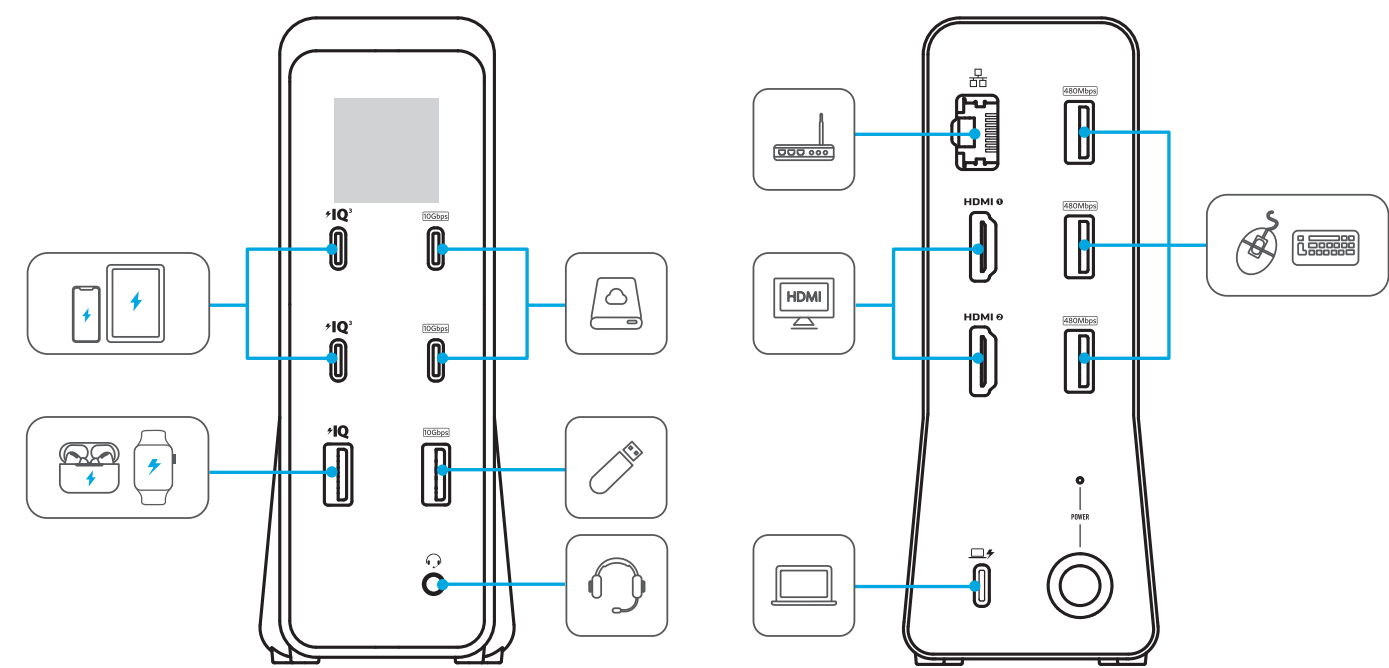


3. Connect your laptop to the dock's USB-C upstream port using the provided USB-C cable.



Please ensure that you use the included USB-C to USB-C 3.1 Gen 2 cable to connect the dock to your laptop.

4. Connect other devices.



Video Output Mode

A/B/C only means the different content displayed on the screen.

System	Laptop Screen	HDMI 1	HDMI 2
Windows OS	A	B	C
Mac OS	A	B	B

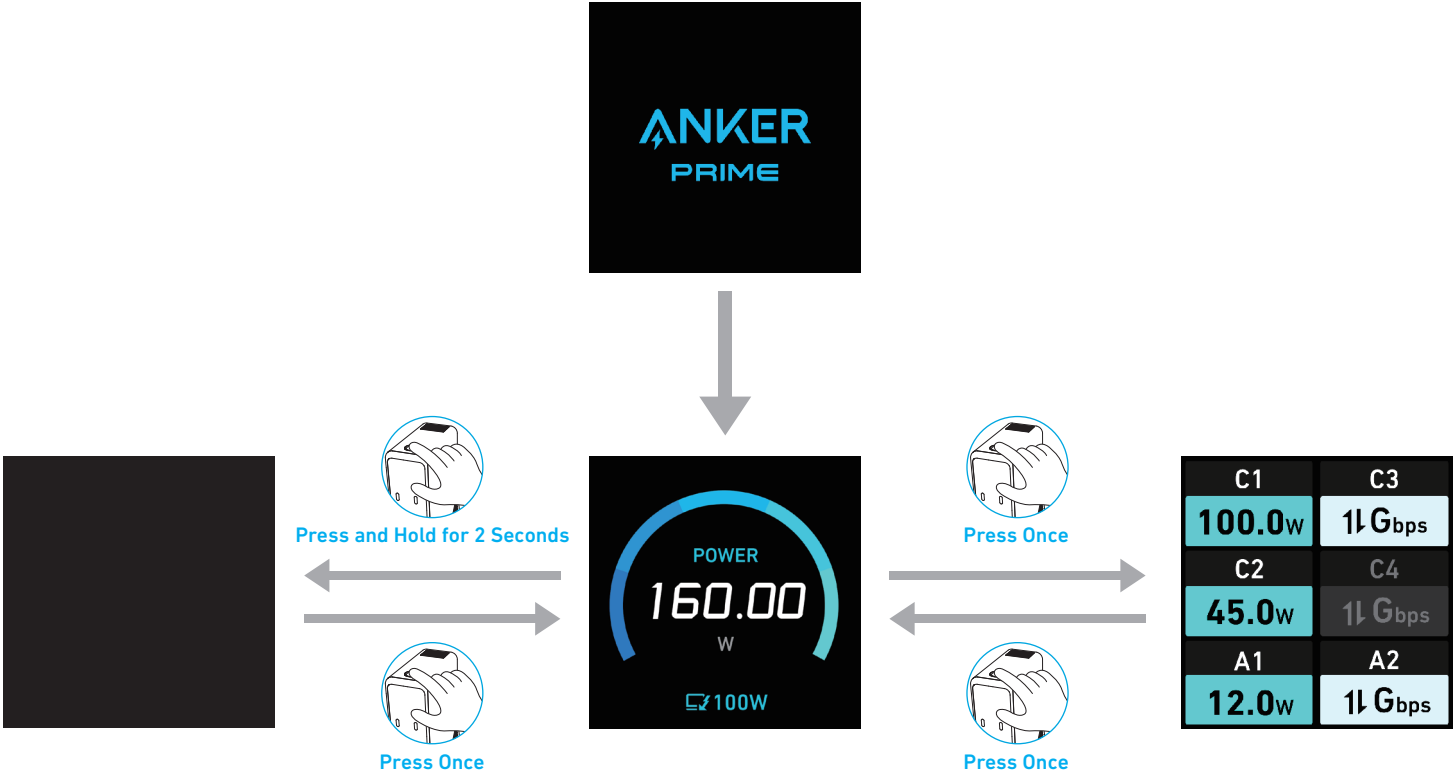
Video Resolution and Refresh Rate

Specification of Your Host Laptop		DP 1.2 Version	DP 1.4 Version without DSC	DP 1.4 Version with DSC 1:3
Resolution and Refresh Rate	Single Monitor	4K@30Hz	4K@60Hz	4K@60Hz
	Dual Monitors	Both 1080p@60Hz	Both 2K@60Hz	Both 4K@60Hz (For Windows) Both 4K@30Hz (For macOS)

- The table above shows the maximum supported resolutions of this dock. Actual display output will vary based upon the host device specifications.
- "DP" stands for DisplayPort. The term "DP Version" relates to the version of the video signal supported by your host laptop, not the physical DisplayPort interface.
- "DSC" refers to Display Stream Compression.



Screen Display Guide



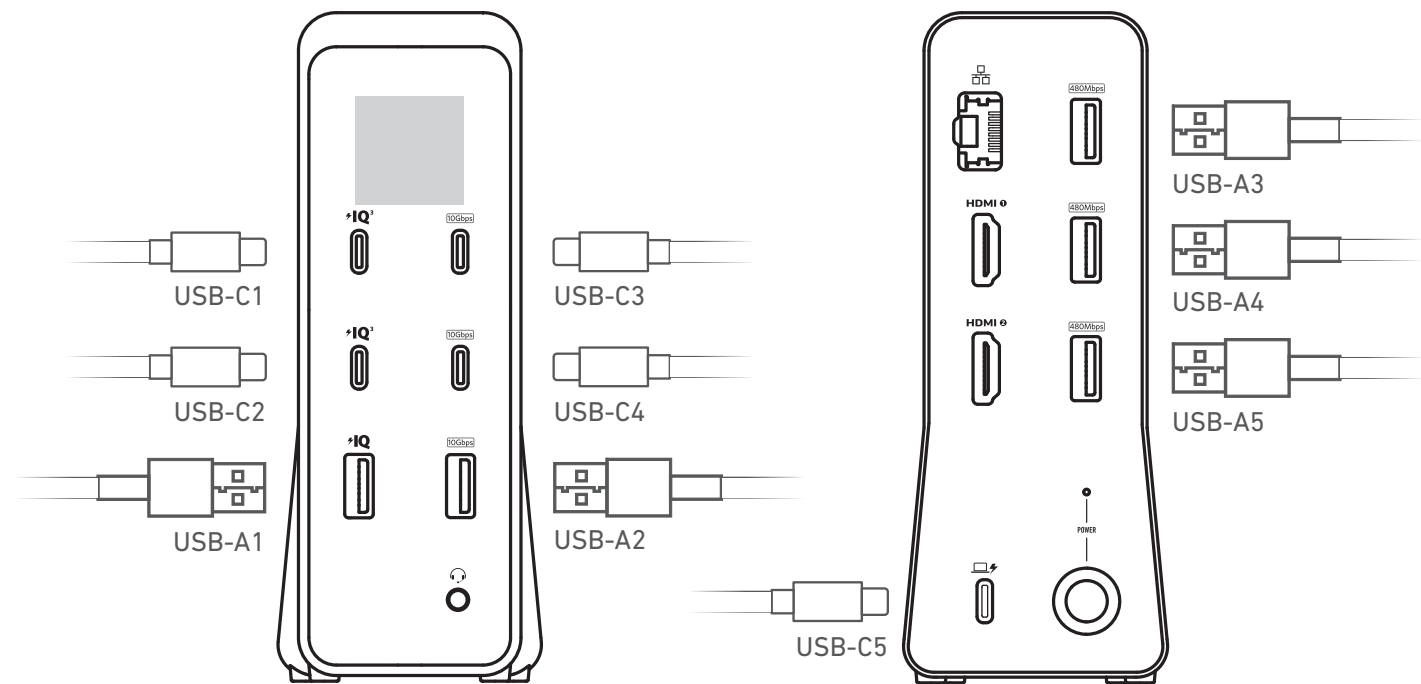
Start-up Screen		When powered on, the Anker logo is displayed.
Home Screen		Press the power button to toggle between two home screens: <ul style="list-style-type: none">• Total output power is displayed.• Charging power or data transfer status of individual USB-C or USB-A port is displayed.
Blank Screen		<ul style="list-style-type: none">• Press the power button once to activate the home screen display.• Press and hold the power button for 2 seconds to turn off the home screen display.
Upgrading Status		The upgrading status is displayed.
Overheating Warning		The temperature is over the optimal situation for a short period.

Anker Dock Manager

You can download the Anker Dock Manager desktop application by visiting:
<https://www.anker.com/dockmanager-download>

This application allows you to easily manage supported Anker hubs and docking stations, ensure device compatibility by updating firmware, and quickly troubleshoot problems using the integrated support and feedback features.

Specifications



Input	100V-240V~, 50-60Hz, 2.5A
Output	<p>Total USB Output: 160W Max</p> <p>Use 1 Port Output: USB-C5(Upstream Port)/USB-C1/USB-C2: 5V~3A / 9V~3A / 15V~3A / 20V~5A (100W Max) USB-A1: 5V~2.4A (12W Max)</p> <p>Use 2 Port Output: USB-C5+USB-C1/C2: 160W Max USB-C1+USB-C2: 130W Max USB-C1/C2/C5+USB-A1:112W Max</p> <p>Use 3 Port Output: USB-C5+USB-C1+USB-C2: 160W Max USB-C5+USB-C1/C2+USB-A1: 157W Max USB-C1+USB-C2+USB-A1:142W Max</p> <p>Use 4 Port Output: USB-C5+USB-C1+USB-C2+USB-A1:157W Max</p>
Working Temperature	0°C~25°C (32°F~77°F)
Storage Temperature	-40°C~80°C (-40°F~176°F)
Data Transfer Speed	10 Gbps
Supported Systems	Windows 10/11, macOS 12 or later, Chrome OS

Compliance Information

- 1.The power of low power consumption condition: 0.45W
- 2.The power of networked standby mode: 1.95W
- 3.The time of automatically into low power consumption condition or networked standby mode: 5mins
- 4.Information of applicable adapter:
 - Input: 100-240VAC, 2.2A, 50-60Hz
 - Output: 5.0VDC, 3.0A, 15.0W / 9.0VDC, 3.0A, 27.0W / 12.0VDC, 3.0A, 36.0W /15.0VDC, 3.0A, 45.0W/ 20.0VDC, 5.0A, 100.0W

Note: The 'x' of SN Code: xxxxxxxxxxxxxxxx is a variable, see below table.

Variable 'x'	Range of variable	Content
Seventh	0-9 or A-F	Denotes the hardware version which is not effected on the safety compliance.
Eighth	8,9,A,B,C...	Denotes the year, 8 means 2018, 9 means 2019, A means 2020, B means 2021, C means 2022, and so on.
Ninth and tenth	01,02,03...	Denotes weeks, 01 means the first week in this year, 02 means the secondary week in this year, and so on.
Eleventh	1-7	Denotes date, 1 means Monday, 2 means Tuesday..., 7 means Sunday and so on.
The last five	00001-99999	Denotes serial No.