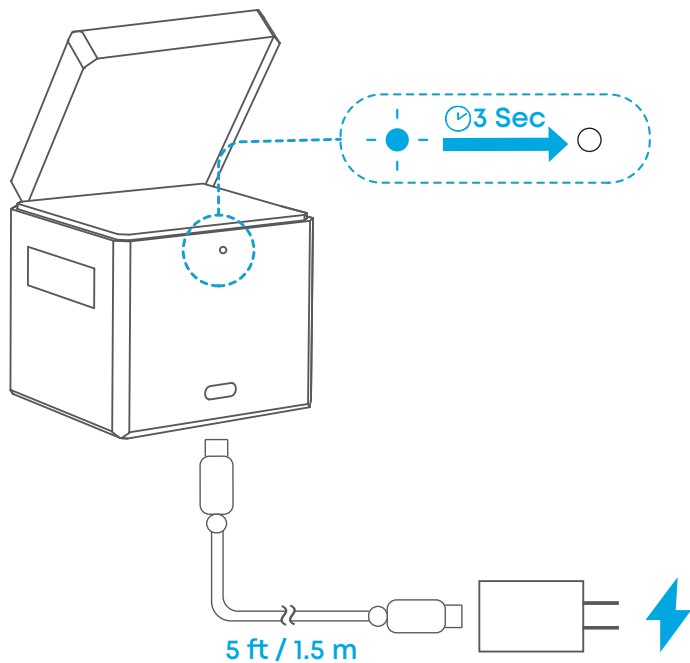
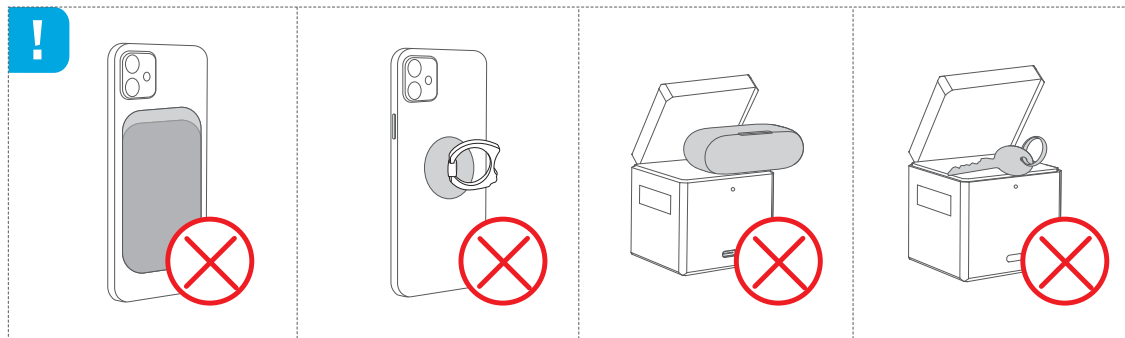
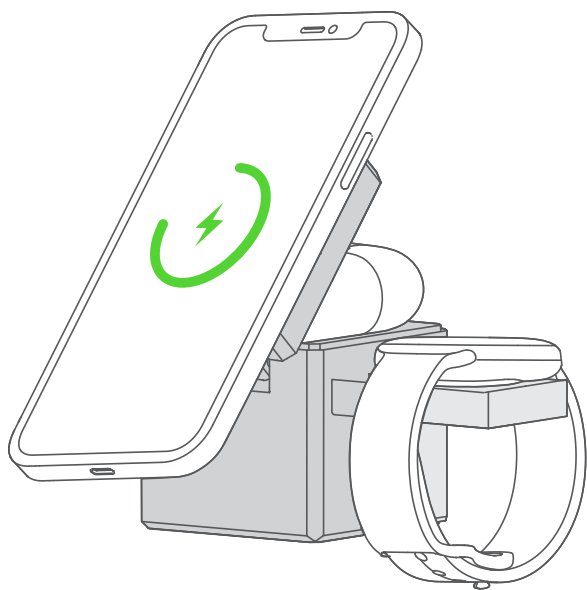


Using Your Product

1. Connect to power.

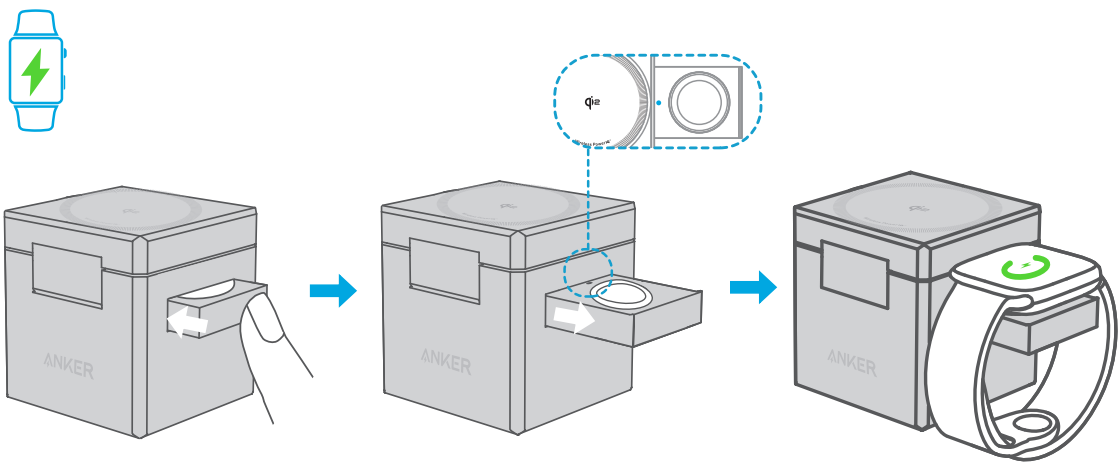


2. Wirelessly charge your iPhone, AirPods, and Apple Watch simultaneously.



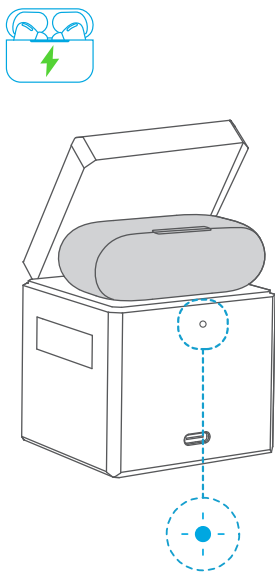
Charge Your Apple Watch

Press once to fully extend the watch's charging tray. A full indicator means it's ready to charge.



Charge Your AirPods




To ensure successful charging, place the earbuds with the charging port facing inward and position it in the center of the charger.



LED Light Guide

LED Indicator	Status
Steady White for 3 Seconds, Then Off	Connected to power.
Steady White	Charging (AirPods only).
Steady Orange	Metal object detected while charging.
Fast Flashing Orange (Every 0.25 Seconds)	Overvoltage or under-voltage protection activated.
Fast Flashing Orange (Every 0.25 Seconds)	Incompatible AC adapter detected. Use a Power Delivery adapter with a minimum output of 30W.

Compatible Devices

	iPhone 12 / 13 / 14 / 15 / 16 Series
	AirPods Pro 1 / 2 (with MagSafe Charging Case) AirPods 4 (with Active Noise Cancellation) AirPods (3rd / 2nd Generation) AirPods (2nd Generation with Wireless Charging Case) Wireless Charging Case for AirPods
	Apple Watch Series 1-10 Apple Watch Ultra 1 / 2 Apple Watch SE (2nd / 1st Generation)

Specifications

Adapter

Input	100-240V~ 50/60HZ, 1.0A
Output	5.0V = 3.0A , 15.0W / 9.0V = 3.0A , 27.0W / 12.0V = 3.0A , 36.0W / 15.0V = 2.66A , 39.9W / 20.0V = 2.0A , 40.0W
Average Active Efficiency	85.67%
Efficiency at Low Load (10%)	84.17%
No-Load Power Consumption	0.04W

Wireless Charger

Input	12V = 3A / 15V = 2.66A / 9V = 3A
Output	15W Max / 5W Max / 5W Max (Phone: 15W Max / Apple Watch: 5W Max / TWS: 5W Max)



QI ID: 22073
The Qi2 logo is a
trademark of the
Wireless Power
Consortium.