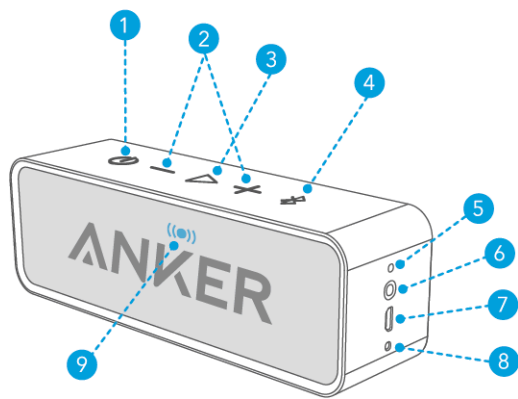


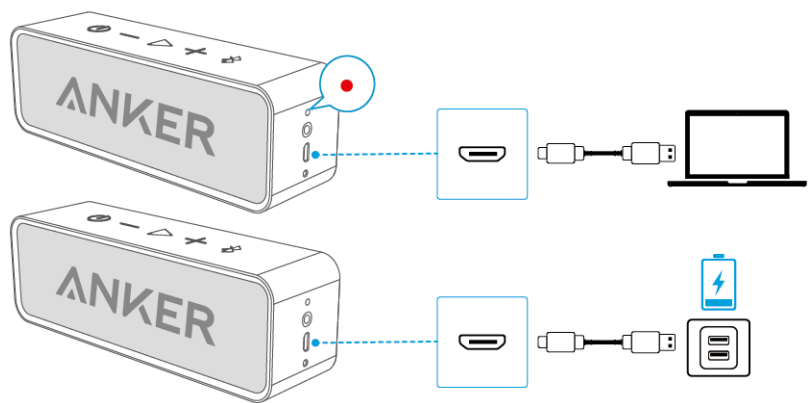
At a Glance



1	Power Button	6	3.5mm Aux Input
2	Volume Buttons	7	USB-C Charging Port
3	Play/Pause Button	8	Microphone
4	Bluetooth Button	9	Status Indicator
5	Battery Indicator		

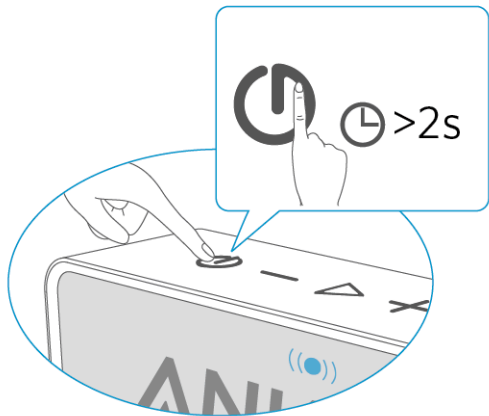
Charging Your Speaker

- Use the included USB cable to charge your SoundCore and make sure it is fully charged before first use.



	Flashing Red	Low Battery
	Steady Red	Being Charged
	Off	Fully Charged

Powering On / Off



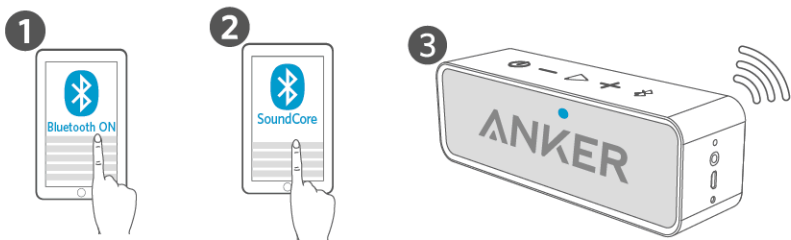
	Press and Hold for 2 Seconds	Power On
	Press and Hold for 2 Seconds	Power Off

This speaker will power off automatically after 10 minutes if no device is connected.

Using Your Speaker

Bluetooth Mode

Enable Bluetooth on your mobile device. Then press the Bluetooth button on the speaker to enter Bluetooth pairing mode, then select "SoundCore" from the Bluetooth list to connect.

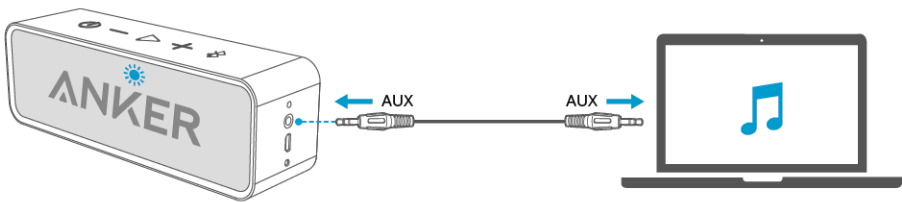


	Press	Enter / Exit Bluetooth Pairing Mode
	Flashing Blue	Bluetooth Pairing
	Steady Blue	Bluetooth Connected



- To un-pair the connected device and re-enter pairing mode, press and hold the Bluetooth button for more than 1 second.
- If the speaker has connection problems, remove it from your device's Bluetooth history, ensure it's less than 3 feet away then try pairing again.

Connect via AUX



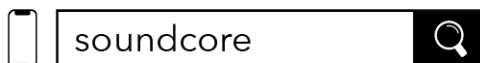
SoundLine AUX cable is sold separately.

Button Controls

	Press and Hold for 2 Seconds	Power On
	Press and Hold for 2 Seconds	Power Off
	Press	Play / Pause Audio
	Press Twice	Next Track
	Press	Answer / End a Call
	Press and Hold for 1 Second	Reject a Call
	Press	Put Current Call on Hold and Answer Incoming Call
	Press and Hold for 2 Seconds	Switch between Held Call and Active Call
	Press	Enter Bluetooth Pairing Mode
	Press and Hold for 1 Second	Un-pair Current Device and Re-enter Pairing Mode
	Press	Volume Up / Down

soundcore App

Download the soundcore app to enhance your experience.



Google Play and the Google Play logo are trademarks of Google Inc.



Apple and the Apple logo are trademarks of Apple Inc.



Specifications

Power Input	5V = 1A
Audio Output	3W ×2
Charging Time	5 to 6 Hours
Playtime (varies by volume level and music content)	24 Hours
Size	165×45×54 mm 6.5×1.8×2.1 in
Weight	365 g / 12.9 oz
Bluetooth Range	20m / 66ft

Hereby, Anker Innovations Limited declares that this device is in compliance with The Product Security and Telecommunications Infrastructure (Security Requirements for Relevant Connectable Products) Regulations 2023. For the Statement of Compliance, visit the website: <https://uk.soundcore.com/pages/psti-related>.

Note: The 'x' of SN Code: xxxxxxxxxxxxxxxx is a variable, see below table.

Variable 'x'	Range of variable	Content
Eighth	0-9 or A-F	Denotes the hardware version which is not effected on the safety compliance.
Ninth	8,9,A,B,C...	Denotes the year, 8 means 2018, 9 means 2019, A means 2020, B means 2021, C means 2022, and so on.
Tenth and Eleventh	01,02,03...	Denotes weeks, 01 means the first week in this year, 02 means the secondary week in this year, and so on.
Twelfth	1-7	Denotes date, 1 means Monday, 2 means Tuesday..., 7 means Sunday and so on.
The last five	00001-99999	Denotes serial No.