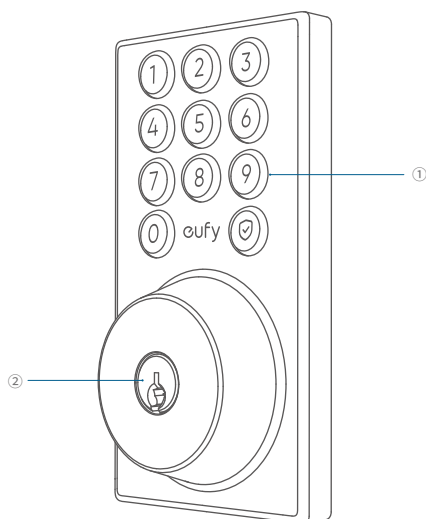


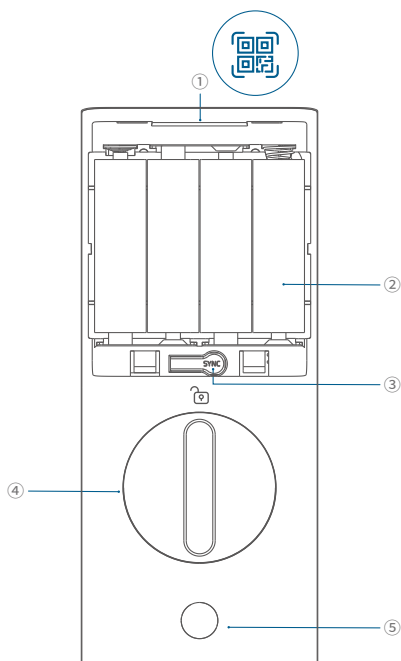
At a Glance

Exterior Assembly



- ❶ Keypad
- ❷ Keyway

Interior Assembly



- ❶ **Serial Number & QR Code**
 - Use to add the Smart Lock C30 in the app.
- ❷ **Battery Compartment**
- ❸ **SYNC Button:**
 - Press and hold for 2 seconds to pair the lock.
 - Press and hold for 10 seconds to reset the lock.
- ❹ **Thumbturn**
- ❺ **Screw Hole**

INSTALLATION

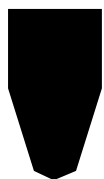
Installation generally takes less than 20 minutes. If you have any questions or concerns, visit support.eufy.com for assistance.



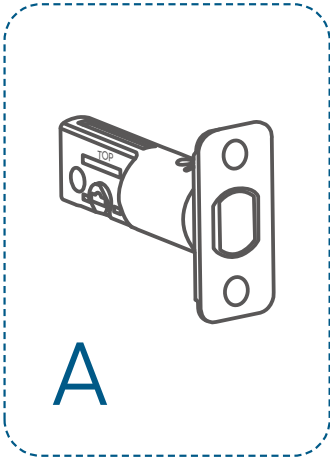
Keep the door open during installation. Do not close the door until the batteries are inserted.

What You Need

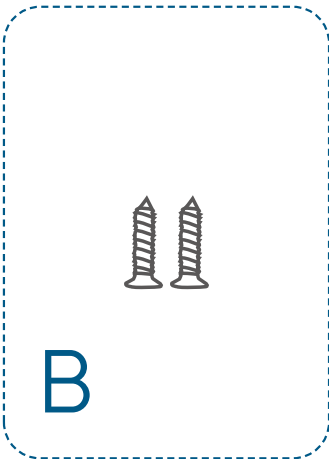
Prepare a **standard Phillips screwdriver** and **4 AA batteries** before installation. The included screws are Phillips screws.



What's in the Box
Step 2. Deadbolt Installation Set

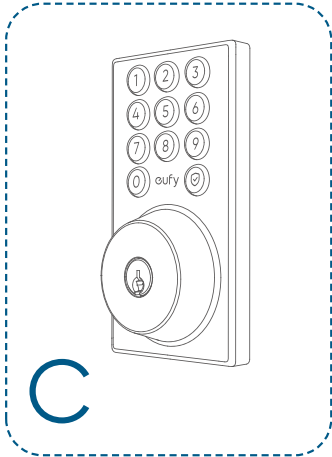


Latch



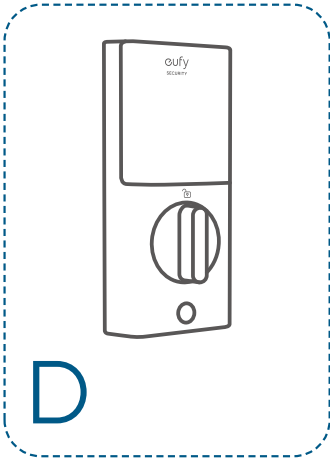
Latch Screws

Step 3. Exterior Assembly

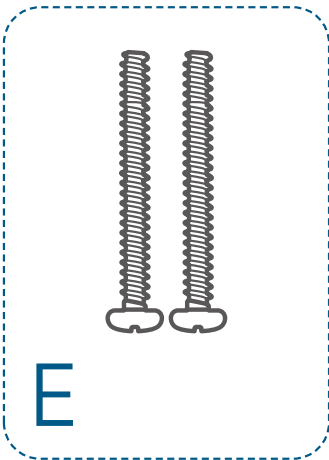


Exterior Assembly

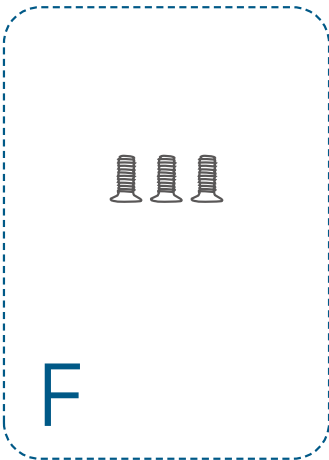
Step 4. Interior Assembly Installation Set



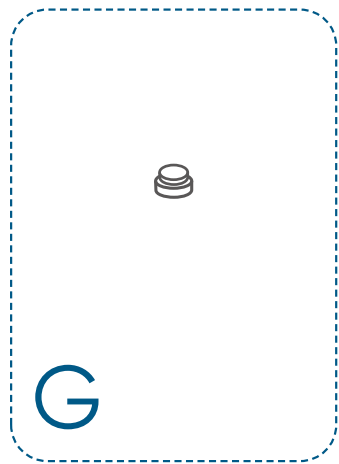
Interior Assembly



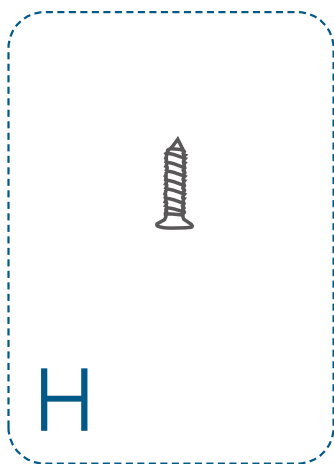
Mounting Plate Screws



Interior Assembly Screws

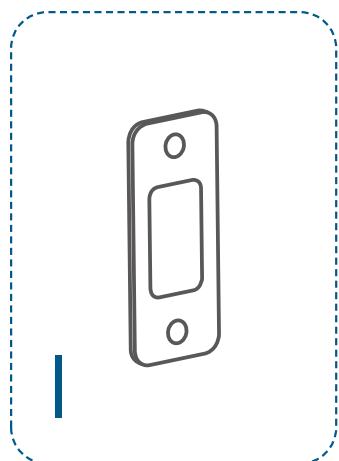


Silicone Plug

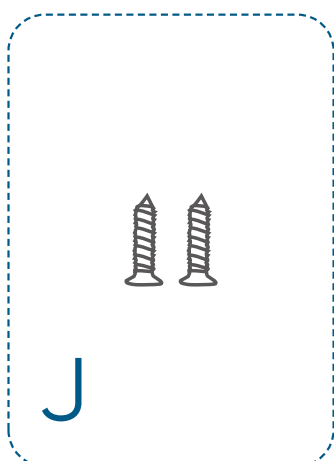


Screw

Step 5. Strike Plate Installation Set



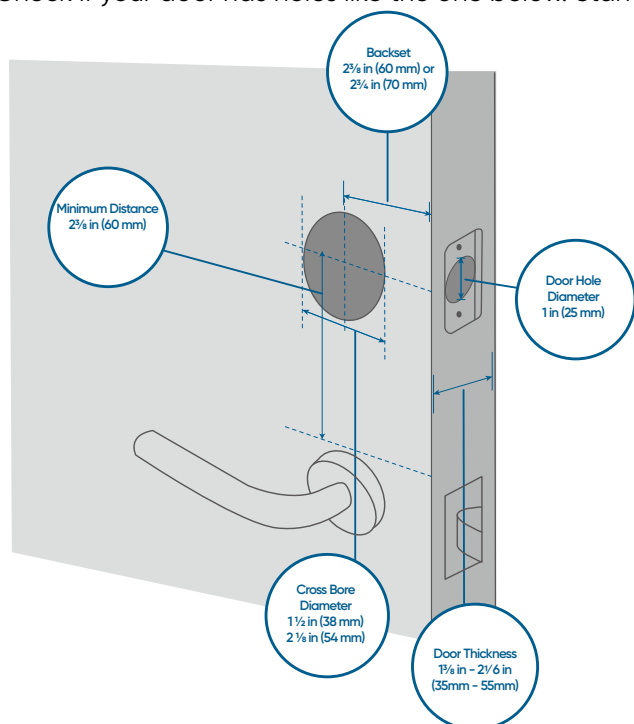
Strike Plate



Strike Plate Screws

Step 1. Prepare the Door

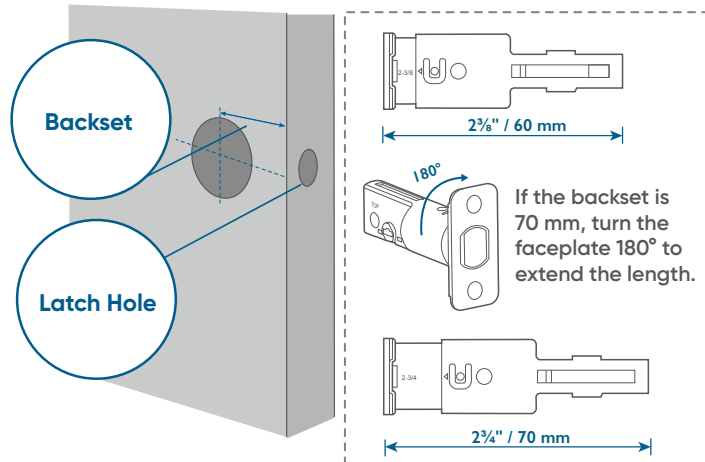
1. Remove the existing lock and check your door.
2. Check if your door has holes like the one below. Standard US doors are already compatible.



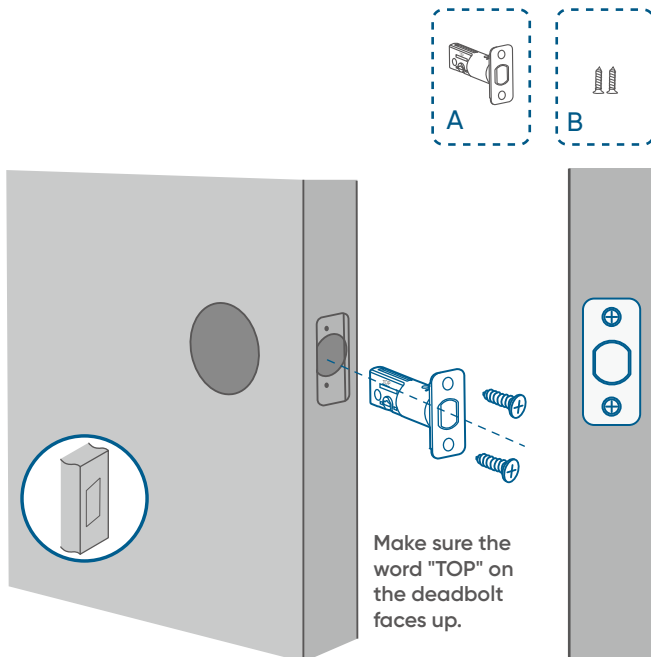
If not, follow the template to drill holes on your door.

Step 2. Install Deadbolt

1. Check your door to see if the deadbolt requires adjustment.

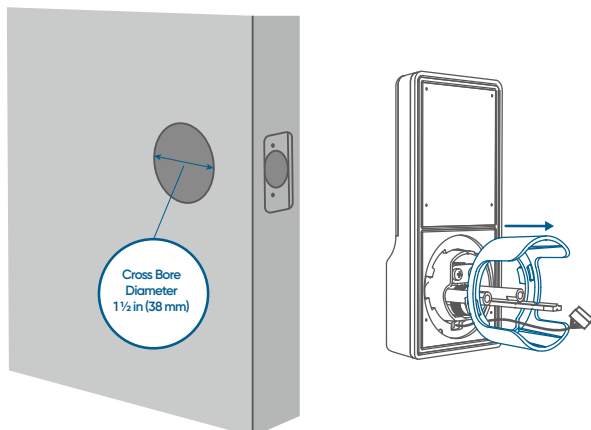


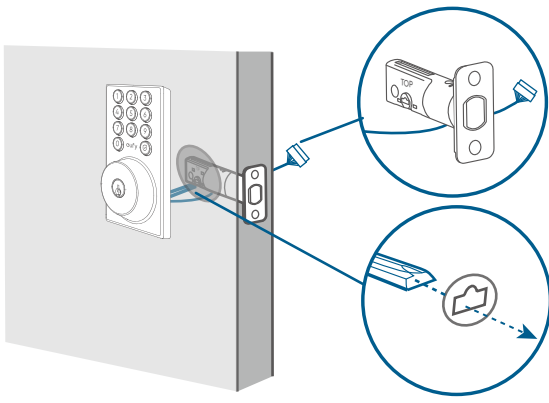
2. Insert and screw the deadbolt into the doorframe.



Step 3. Install Exterior Assembly

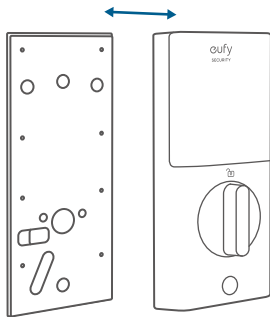
If the cross bore diameter of your door is 38 mm, remove the spacer before installing the exterior assembly.



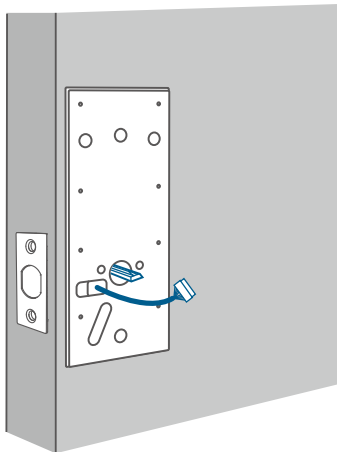


Step 4. Install Interior Assembly

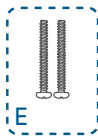
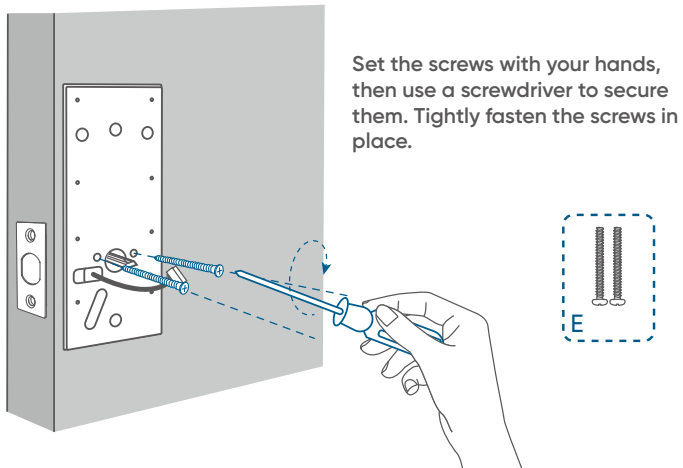
1. Detach the mounting plate from the interior assembly.



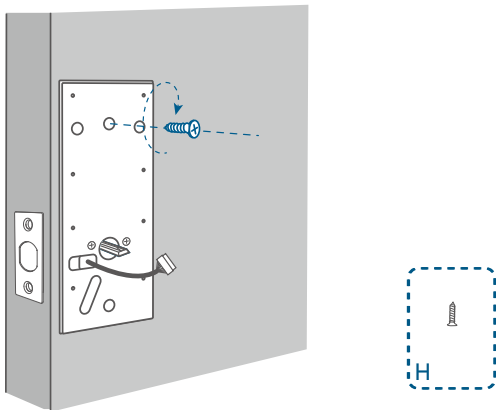
2. Run the wires through the mounting plate.



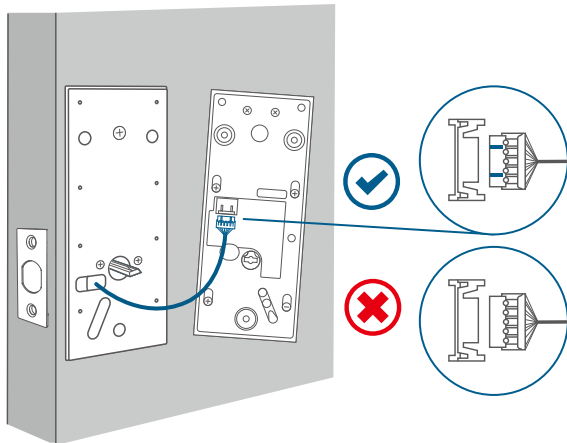
3. Secure the mounting plate with screws.



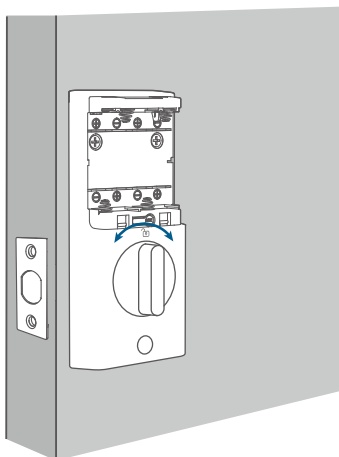
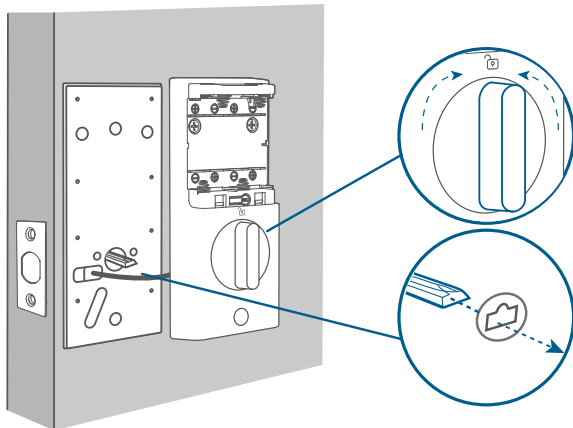
(Optional) If the mounting plate is not fastened tightly to the door, use the additional screw provided.



4. Wire to the interior assembly.

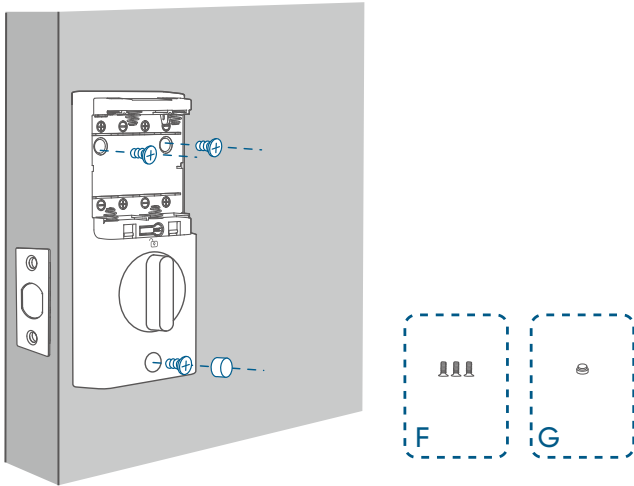


5. Mount the interior assembly. Make sure both wires are tucked into the cabin on the back of the interior assembly.

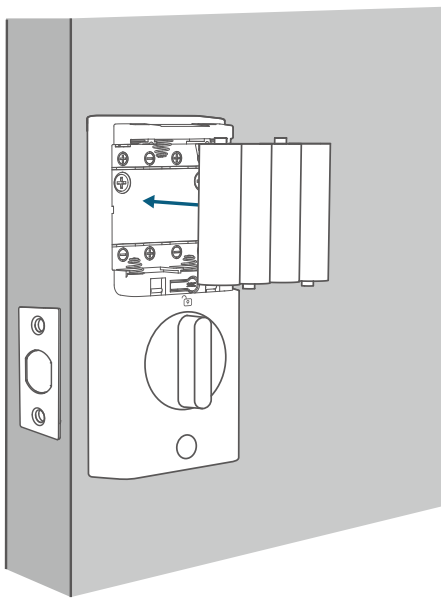


Make sure the deadbolt is retracted and the thumb turn knob is on the 'unlock' position, check if the deadbolt moves properly by turning the thumbturn.

Insert and tighten the screw below the deadbolt first, and then tighten the two screws above.



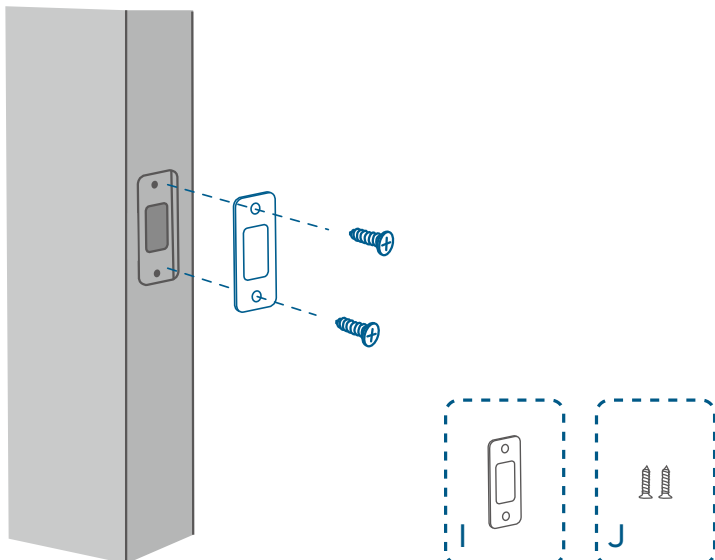
6. Install 4 AA batteries with the correct polarity. Don't put on the cover until the system setup is done in the app.



Step 5. (Optional) Install Strike Plate

Make sure the depth of the latch hole on the door frame is deep enough (1 in / 25.4 mm), otherwise the calibration might fail during the setup.

💡 Install the strike plate as needed. If the latch hole is too deep, you may install the provided plastic separator.



Setting Up the System

1. Download and install the eufy Security app, then sign up for an account.



2. Follow the in-app instructions to add the Smart Lock C30 to your device list.

Please visit <https://support.eufylife.com/s/> or scan the QR code for more information.

