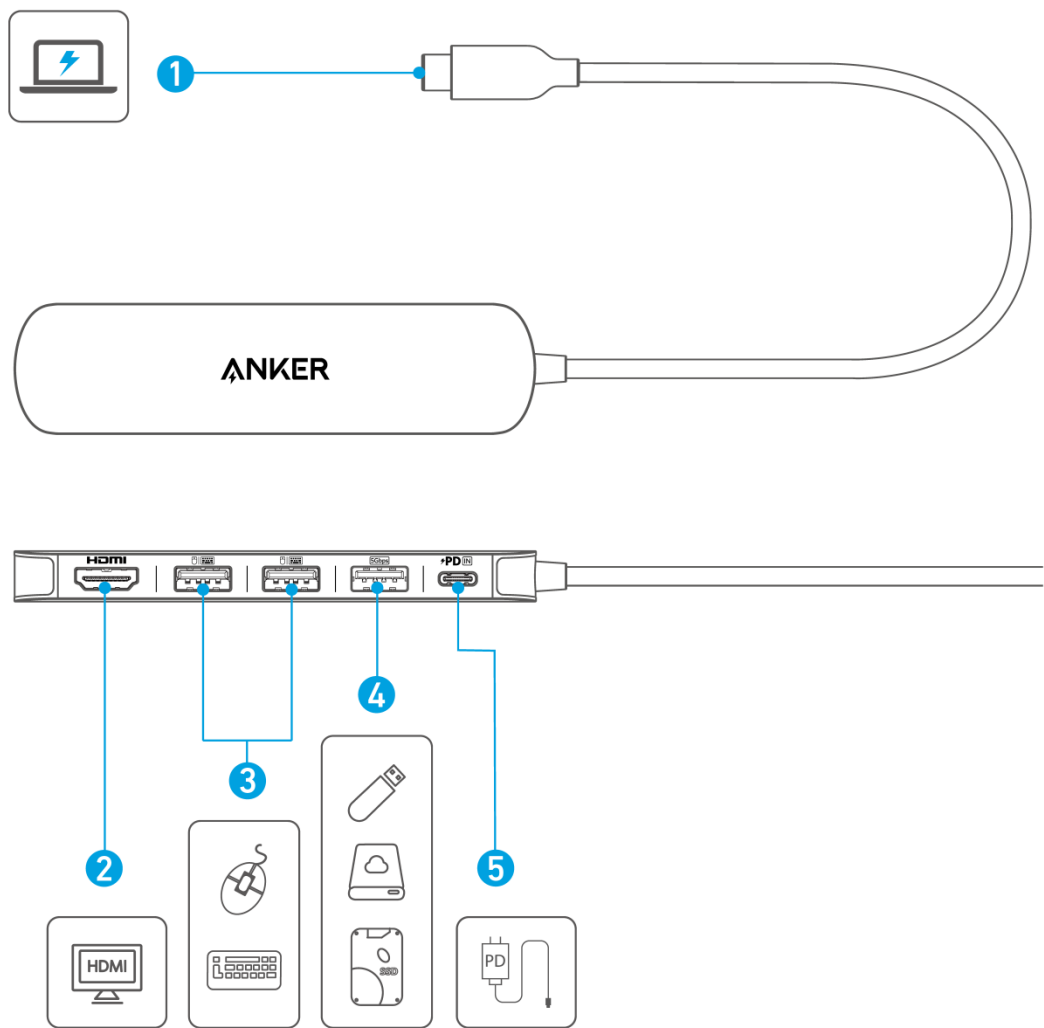


At a Glance



1. USB-C Connector	Plug into a laptop's USB-C port to connect the hub.
2. HDMI Port	Supports resolutions up to 4K@30Hz. Note: please make sure that the USB-C port of your laptop supports DP Alt Mode and Power Delivery.
3. USB-A 2.0 Port	Offers data transfer speeds up to 480Mbps.
4. USB-A 3.0 Port	Delivers fast data transfer at speeds up to 5Gbps.

5. USB-C PD Input Port	<p>Connect to a 100W Power Delivery charger (not included) to enable up to 90W pass-through charging to a laptop.</p> <p>Note: the USB-C PD-IN port is dedicated to charging only and does not support data transfer or video output for devices such as hard drives, headphones, speakers, or monitors.</p>
------------------------	--

Specifications

Data Transfer Speed	5Gbps
Supported Systems	Windows 10 and above, macOS 12 and above, and ChromeOS

Compliance Information

1. The power of low power consumption condition: 0.45W
2. The power of networked standby mode: 1.95W
3. The time of automatically into low power consumption condition or networked standby mode: 5mins
4. Information of applicable adapter:
 - Input: 100-240VAC, 2.2A, 50-60Hz
 - Output: 5.0VDC, 3.0A, 15.0W / 9.0VDC, 3.0A, 27.0W / 12.0VDC, 3.0A, 36.0W / 15.0VDC, 3.0A, 45.0W / 20.0VDC, 5.0A, 100.0W

Note: The 'x' of SN Code: xxxxxxxxxxxxxxxx is a variable, see below table.

Variable 'x'	Range of variable	Content
Seventh	0-9 or A-F	Denotes the hardware version which is not effected on the safety compliance.
Eighth	8,9,A,B,C...	Denotes the year, 8 means 2018, 9 means 2019, A means 2020, B means 2021, C means 2022, and so on.
Ninth and tenth	01,02,03...	Denotes weeks, 01 means the first week in this year, 02 means the secondary week in this year, and so on.
Eleventh	1-7	Denotes date, 1 means Monday, 2 means Tuesday..., 7 means Sunday and so on.
The last five	00001-99999	Denotes serial No.