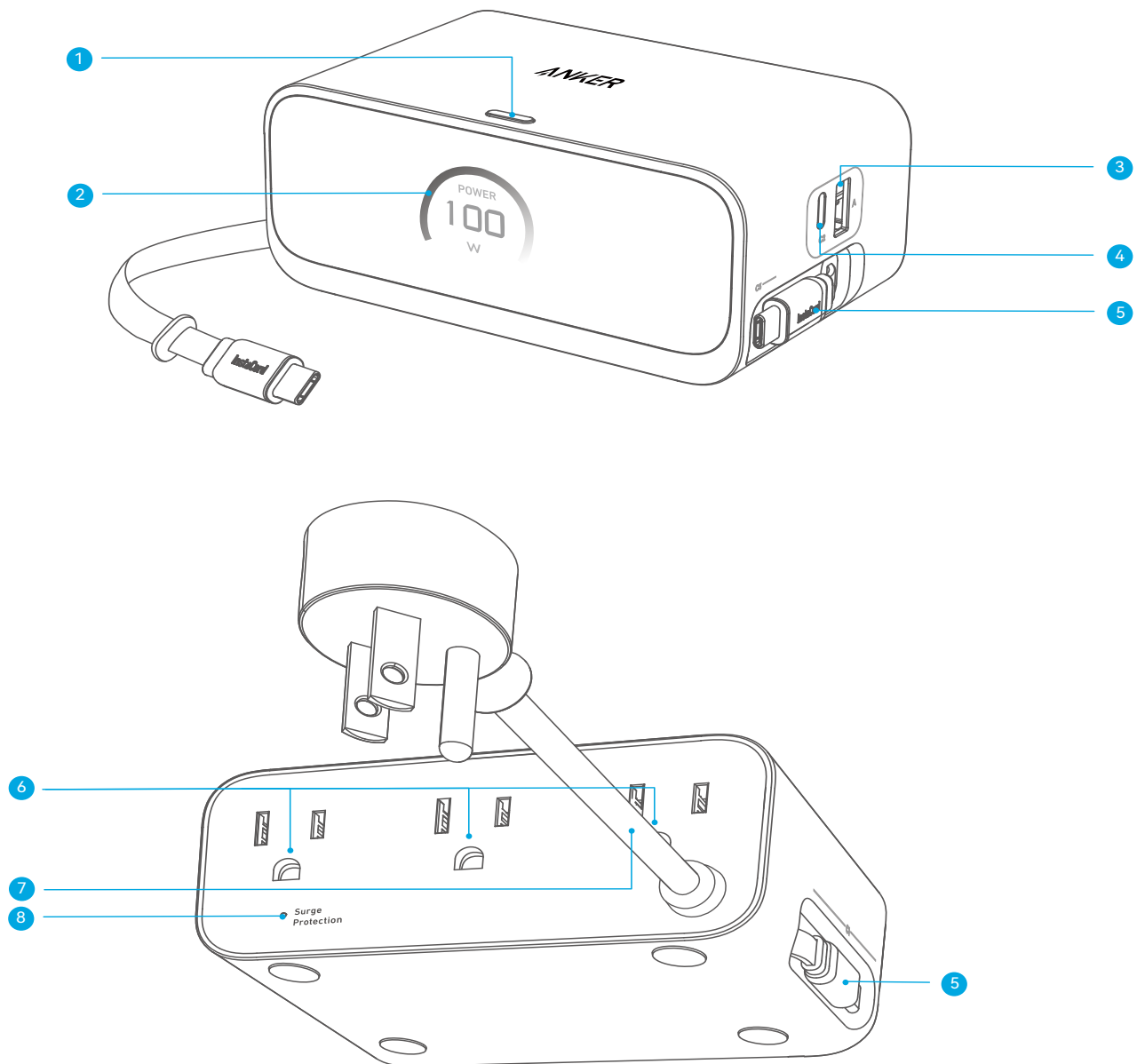


Overview



1. Toggle Button

- Long press to turn the display screen off.
- Short press to wake the screen or switch pages.

2. Display Screen

- Old Version: The screen turns off after 30 seconds of inactivity.
- New Version: The screen turns off after 1 minute of inactivity by default. The timeout duration can be customized on the screen timeout page (see Screen Display Guide).

3. USB-A Port

4. USB-C Port

5. Retractable USB-C Cables

- Extend the cable by pulling it out over 4" (10 cm). Pull again to extend it further. After use, briefly pull to retract it automatically.

6. AC Outlet

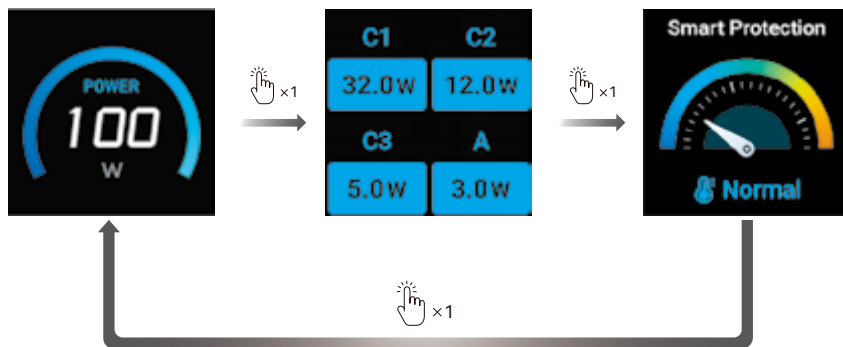
7. Power Cord

8. Surge Protection Indicator

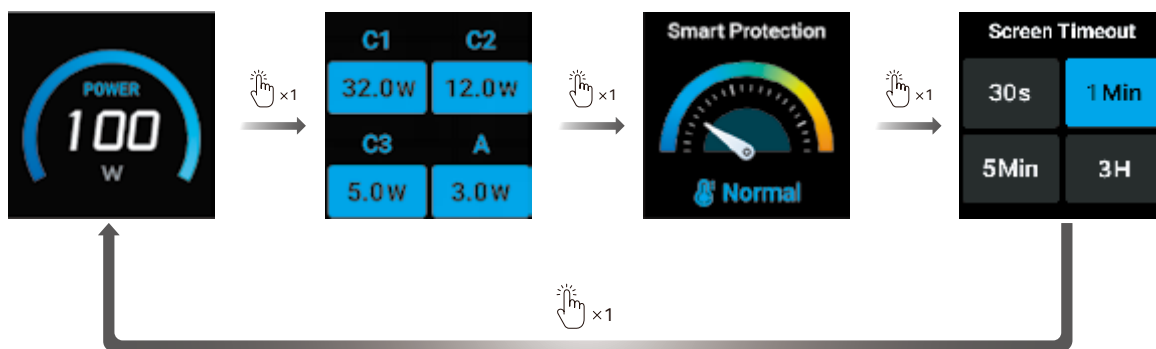
Screen Display Guide

Note: Due to product updates, your product's screen display may appear in any of the versions shown below.

Old Version

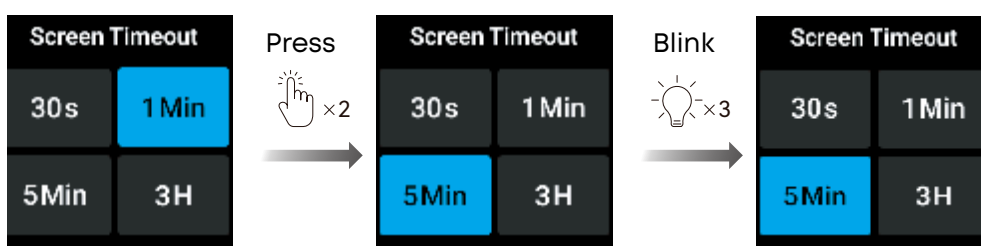


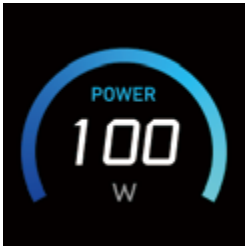


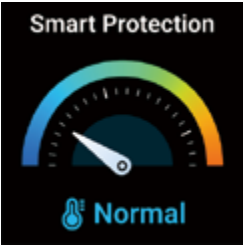
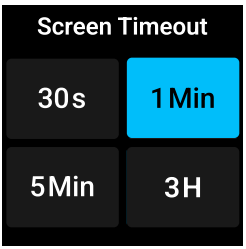
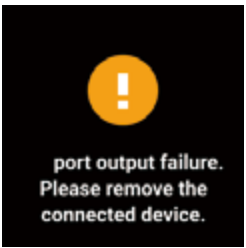
New Version



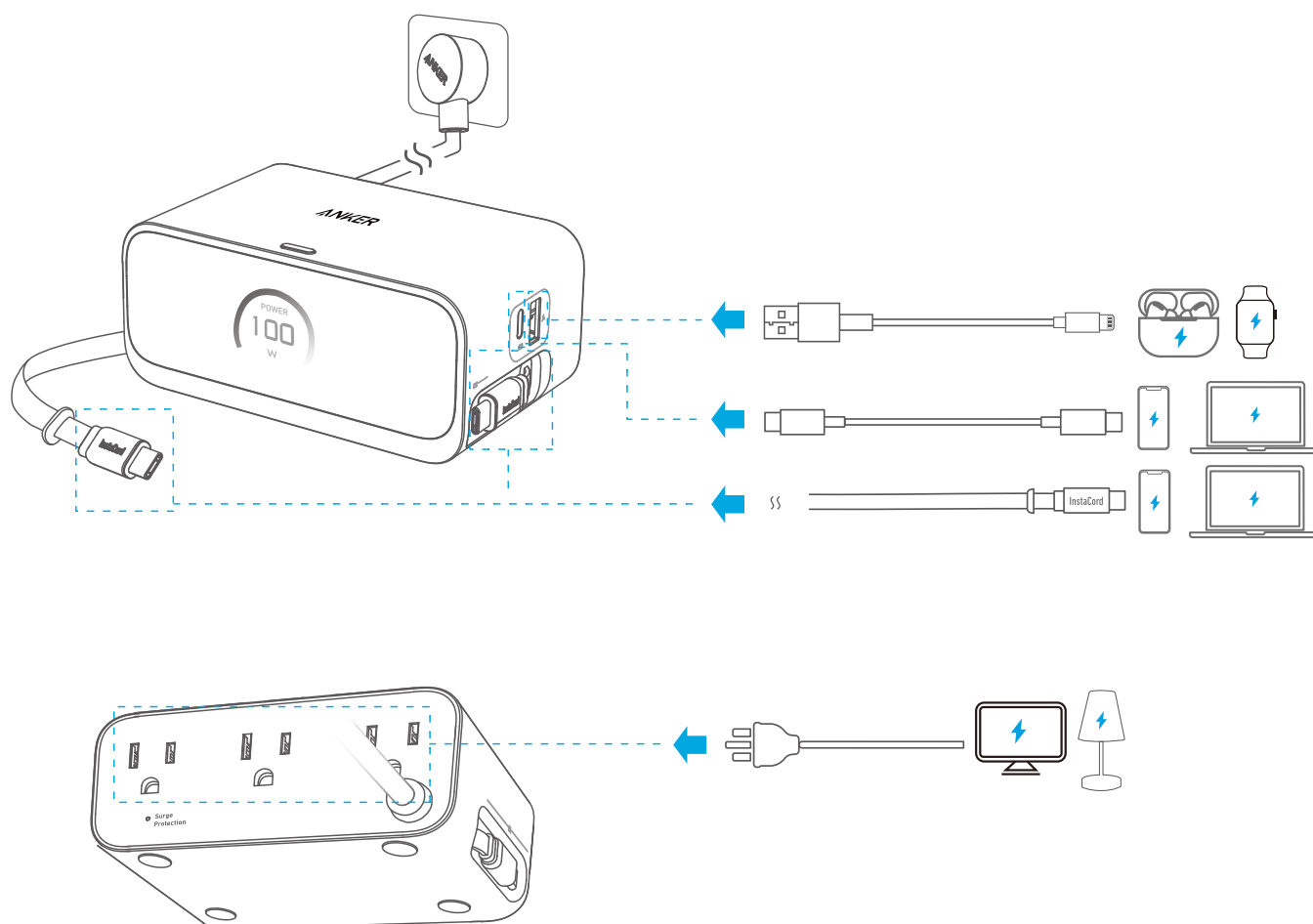
Screen Timeout

Press the button twice to switch to a new mode, and wait for the blue part to blink three times. Once the blinking stops, the new mode will be activated.



Main Screen		Displays real-time total charging power.
		Both retractable USB-C cables are connected to charging devices.
Detail View		Displays real-time charging power of each USB port.
		Real-time temperature monitoring. <ul style="list-style-type: none"> • Normal operation at low temperatures: Below 131°F (55°C) • Normal operation: 131°F~205°F (55°C~96°C) • Cooling mode activated: 205°F (96°C)
		Screen Timeout Setting (Available in the latest version). Press the button twice to switch to a new mode, and wait for the blue part to blink three times. Once the blinking stops, the new mode will be activated.
		Displays failure information and symbols during abnormalities. Automatically returns to the main interface once issues are resolved.

Charging Your Devices

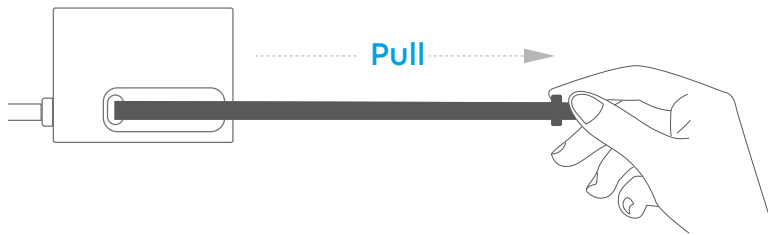


- When this product is connected to a power outlet, the Power indicator and the Surge Protection indicator will turn white.
- The surge protection feature can protect your computers, smartphones and other electronic equipment against voltage fluctuations, surges, and spikes. If the surge protection light is off, it indicates that surge protection is not functioning normally.

Anker InstaCord Guide

Step 1: Easily Extend by Pulling

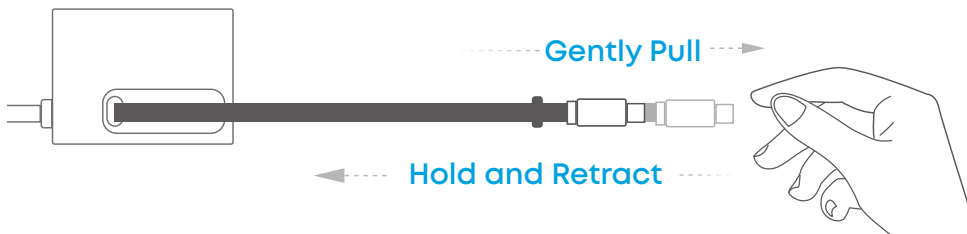
Extend the cable slightly beyond the desired length, then release it to lock it in place.



- Extend the cable at least 0.48 ft to start charging.

Step 2: Gently Pull to Auto-Retract

Gently pull the cable forward by no more than half an inch to retract.



- To adjust to a shorter length, retract the cable slightly and extend it again to achieve the desired length.

Note: The retractable cable locks at 7 preset lengths—approximately 0.48 ft, 0.83 ft, 1.17 ft, 1.48 ft, 1.74 ft, and 2.33ft

Specifications

Electrical Rating	125V~, 60Hz, 10A
AC Output	1,000W
USB Output	<p>1 Port: USB-C1/C2/C3 Output: 5V = 3A / 9V = 3A / 15V = 3A / 20V = 5A (100W Max) USB-A Output: 5V = 2.4A (12W Max)</p> <p>2 Ports: USB-C1+USB-C2/USB-C3 Output: 67W Max+33W Max or 50W Max+50W Max USB-C2+USB-C3 Output: 67W Max+33W Max or 50W Max+50W Max USB-C1/USB-C2/USB-C3+USB-A Output: 88W Max+12W Max</p> <p>3 Ports: USB-C1+USB-C2+USB-C3 Output: 34W Max+33W Max+33W Max or 46W Max+27W Max+27W Max USB-C1+USB-C2/USB-C3+USB-A Output: 55W Max+33W Max+12W Max or 45W Max+43W Max+12W Max USB-C2+USB-C3+USB-A Output: 33W Max+55W Max+12W Max or 43W Max+45W Max+12W Max</p> <p>4 Ports: USB-C1+USB-C2+USB-C3+USB-A Output: 30W Max+28W Max+30W Max+12W Max</p>
AC Cable Length	5 ft
Surge Protection	300J

Note: The built-in USB module supports an input voltage of 100-240V~, 50-60Hz.

FAQ

Q: Why does my device support 65W charging but the screen only shows 15W?

A: The power shown on the screen reflects real-time output, which varies based on your device's battery level and temperature. When the battery is nearly full or the device is overheating, charging speed may be reduced for safety.

Q: Why won't the retractable cable retract properly?

A: The retractable cable uses an internal locking mechanism. To retract, gently pull the cable about 0.05 ft (1.5 cm) until it clicks, and it will retract automatically.

Q: Why is the retractable cable only 2.3 ft (0.7 m) long?

A: The built-in cable is designed for compact desktop use. For longer reach, we recommend using a 3 ft (1 m), 5 ft (1.5 m), or 6.6 ft (2 m) charging cable with the USB-C2 or USB-A ports.

Q: Will the screen appear blurry if my table is too low?

A: The screen's viewing angle is tested during manufacturing. For best visibility, use the charger at eye level or tilt the screen to face you directly.

Q: Is it normal for the charger to get warm during use?

A: Yes. Heat is generated as the charger converts AC to DC power, especially during fast charging. This is normal and safe.

Q: Why does the power display differ from my device's screen?

A: **For Non-Anker Devices:** Differences in power measurement methods and cable loss may cause discrepancies. Your device may show slightly less than our display—up to 10W variation is normal.

For Anker Devices: Power loss from cables and display differences can still result in up to 10W variation between devices. This is within the normal range.

Q: Why doesn't the cable magnetically attach to the casing after retracting?

A: The connector attaches magnetically to the side of the charger. If it doesn't stick, it may not be aligned properly. Gently press the connector toward the side of the charger to secure it.