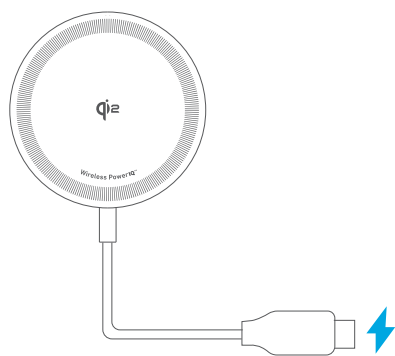


# Using Your Product



**Note:** Use an adapter with an output of 20W or higher to ensure optimal performance.

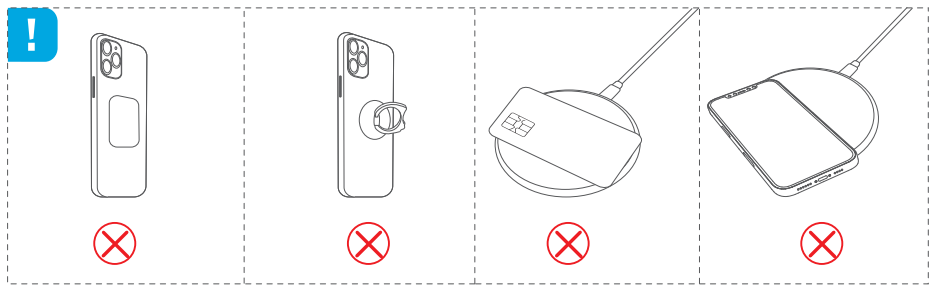
## FAQ

**Q: Is the product safe to use when it gets warm/hot?**



A: It's normal for wireless chargers to warm up slightly, especially during intensive use such as long gaming or streaming sessions. However, it complies with international safety standards, including EN 62368-1 and IEC 62368-1, ensuring safe usage. This product also meets specific safety standards in the USA (UL6238-1), Canada (CSA 62368-1), Europe (EN 62368-1), Japan (J62368-1), Australia and New Zealand (AS/NZS 62368-1), and more.

**Q: Can a phone case affect wireless charging?**

A: For the best wireless charging experience, we recommend using Apple's official magnetic phone cases. You should avoid cases thicker than 2.5 mm and non-magnetic cases, as they may affect charging efficiency.



## Compatible Devices

	iPhone 15 / 14 / 13 / 12 Series
	AirPods (With Wireless Charging Case) And other TWS earbuds supporting wireless charging

## Specifications

Input	9V $\overline{=}$ 2.5A
Output	15W Max



Qi ID: 22179  
The Qi2 logo is a trademark  
of the Wireless Power  
Consortium.