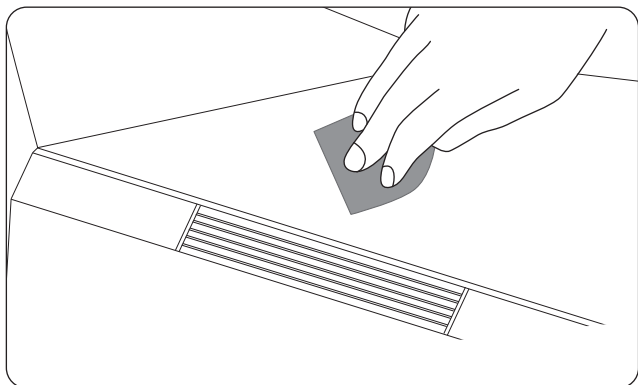


Using Your Product

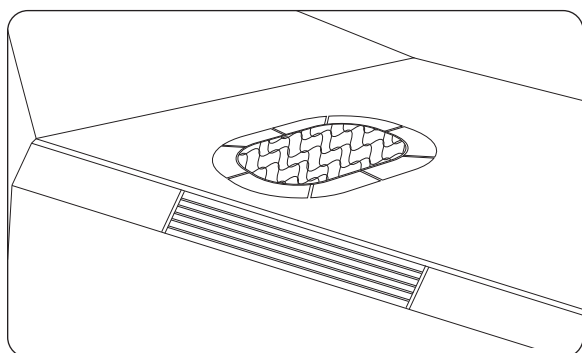
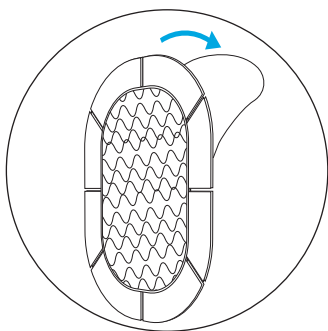
1. Postion your car mount

- a. Clean the installation surface with the provided wet wipes.



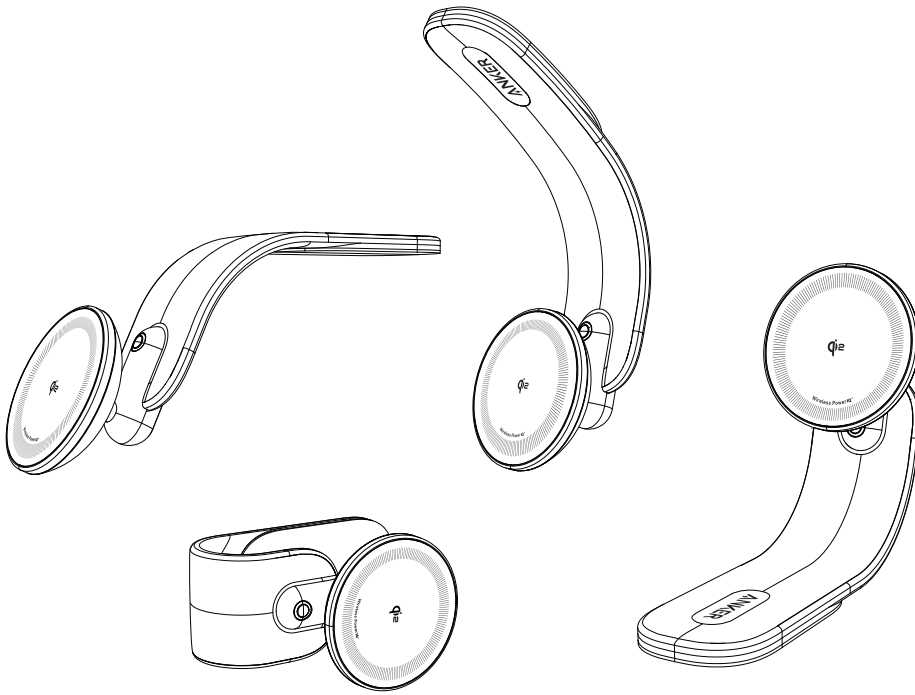
Note: Choose a flat spot that won't interfere with driving. Avoid installing on leather or suede surfaces, or surfaces waxed with cleaning agents.

- b. Once the surface is dry, attach the Velcro and press firmly for 60 seconds.



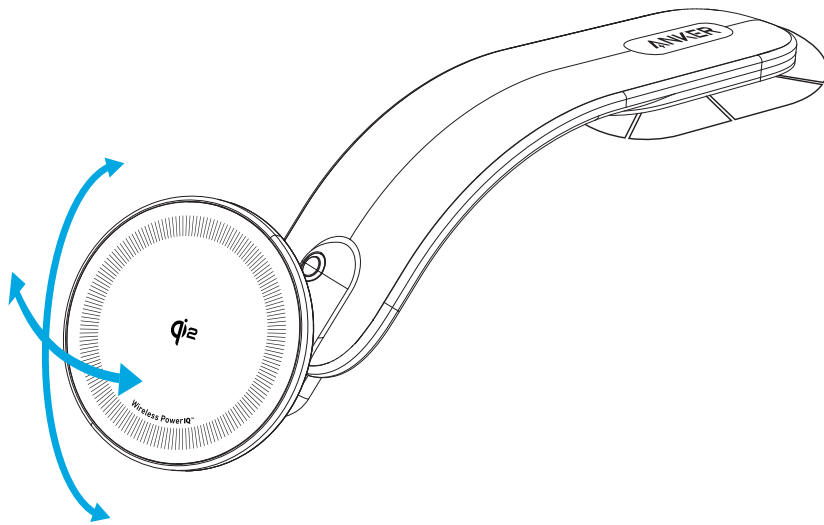
Note: The 3M adhesive sticker is intended for single use; reusing it may reduce adhesion. If repositioning is needed, please use the replacement Velcro provided.

c. For optimal adhesion, wait 48 hours before attaching the mount base to the Velcro.



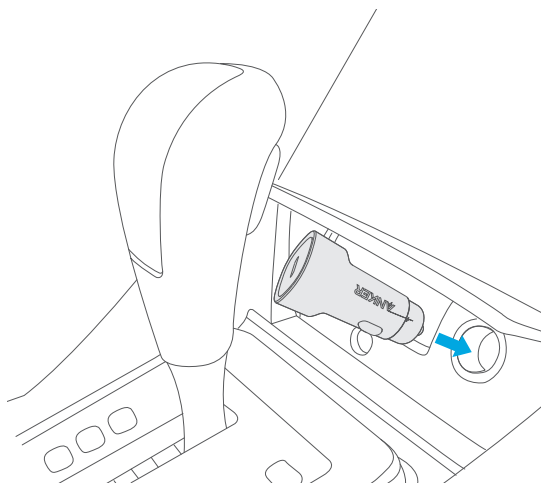
Note: Adjust the bracket to the desired angle, then align it with the Velcro for installation.

d. Adjust the pad to the perfect viewing angle.



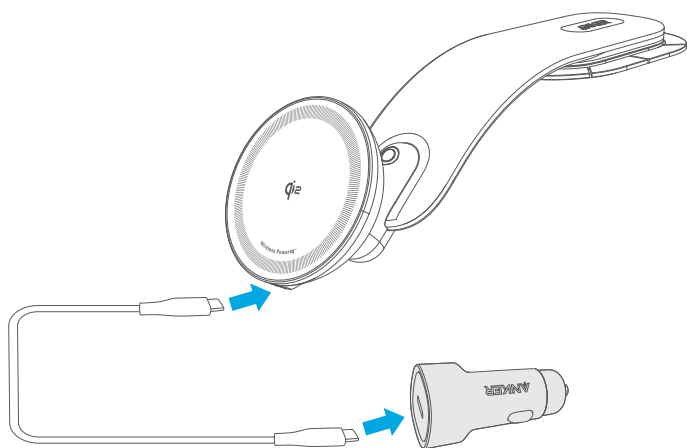
- Do not install the mount on airbag modules, as this may cause serious injuries.
- We recommend installing and using at room temperature (50 - 100°F / 10 - 38°C), as extreme temperatures can affect the adhesive's performance.
- When adjusting the bracket after installation, hold the Velcro securely in place.

2. Insert the car charger into the cigarette lighter



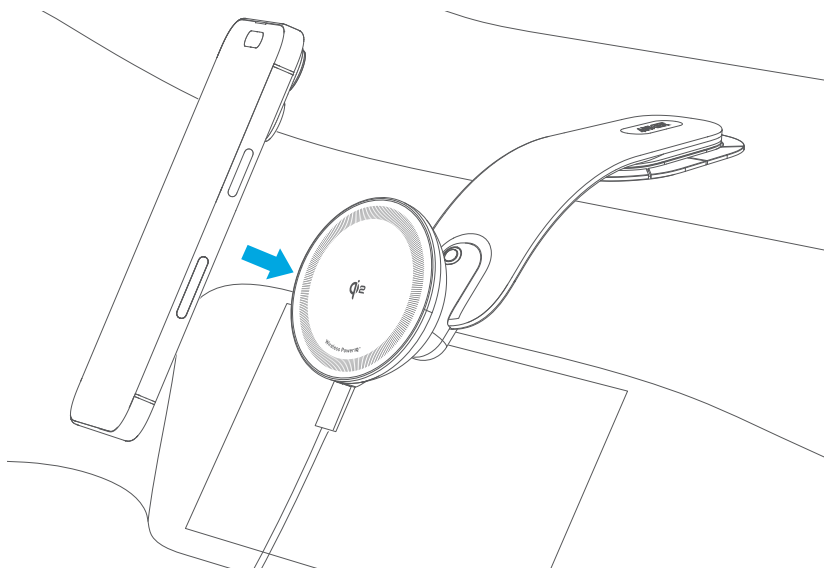
Note: Use the included car charger or a third-party PD car charger with an output of 20W or higher.

3. Connect the wireless charger to the car charger using the USB-C cable



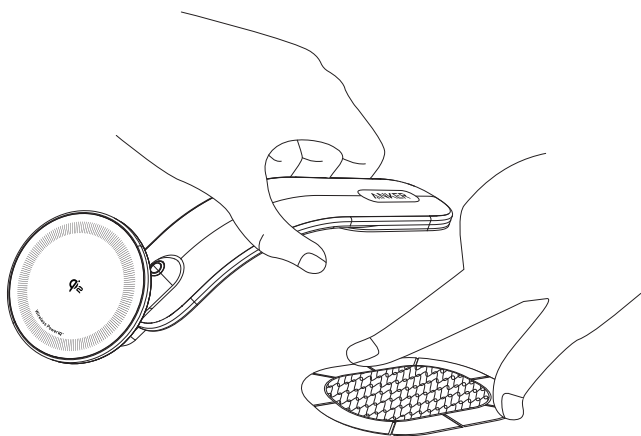
Note: Ensure the cable doesn't interfere with safe driving. The steering wheel, pedals, turn signals, and wiper controls must move freely.

4. Charge your phone



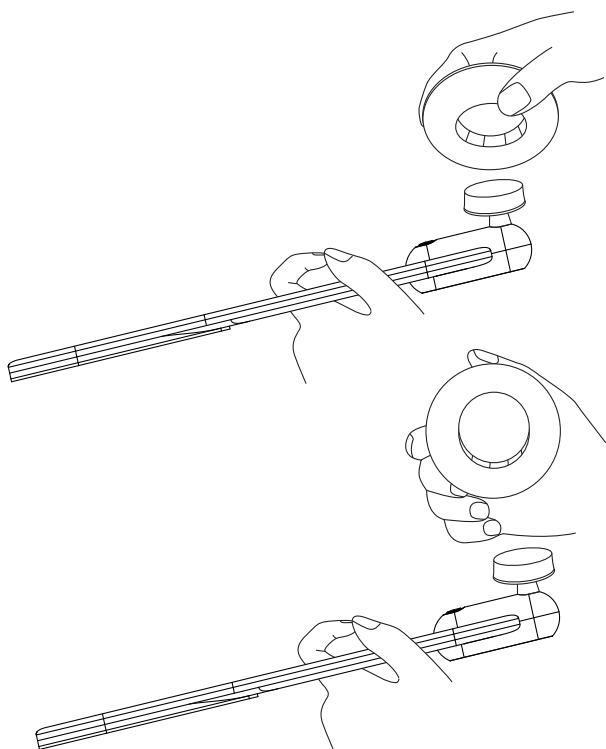
Note: The wireless charger is not compatible with non-magnetic phone cases, such as OtterBox Defender cases. Cases made of metal or with attachments like cards, keys, and pop grips will interfere with charging.

Car Mount Removal



Magnetic Pad Removal

1. Detach the bracket from the Velcro before removal.
2. Remove the magnetic pad to use it as a standalone wireless charger.



Specifications

Total Wattage	15W Max
Input	9V=2.5A
Compatible Devices	iPhone 16 / 15 / 14 / 13 / 12 Series



Qi ID: 23007

The Qi2 logo is a trademark
of the Wireless Power
Consortium.