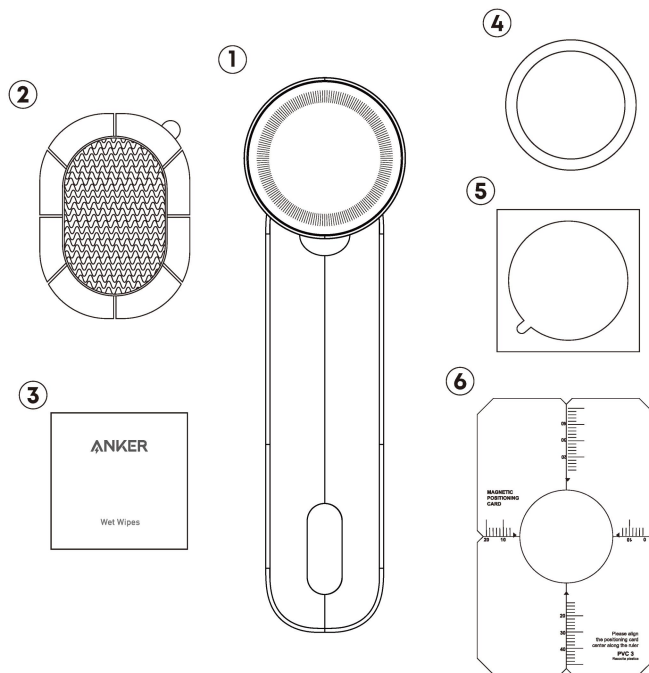


What's in the box

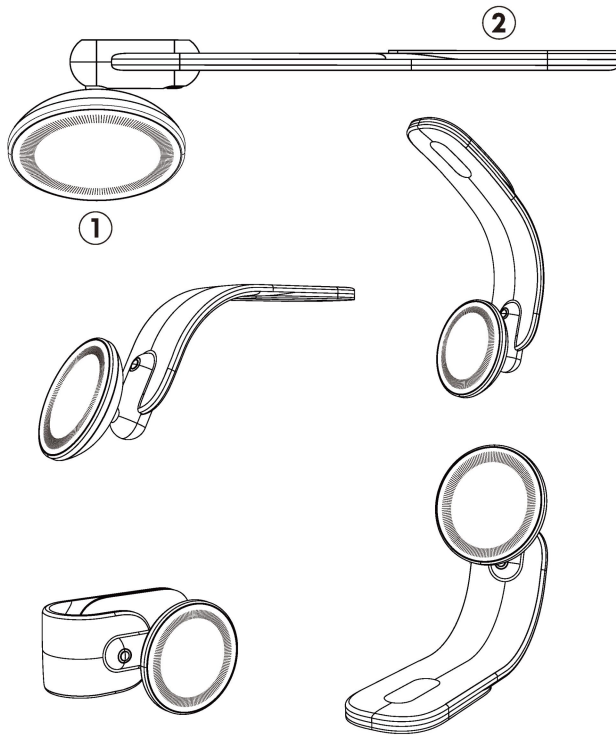


1. Car Mount
2. Velcro (×2)
3. Wet Wipes (×2)
4. Magnetic Ring
5. Phone Protective Film
6. Magnetic Positioning Card

Note:

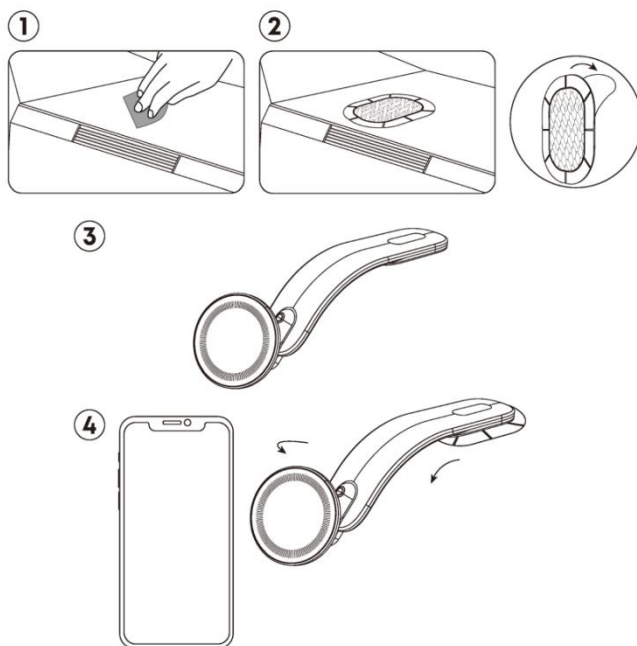
The magnetic ring, phone protective film, and magnetic positioning card are included in the same package.

At a Glance



1. Magnetic Pad
2. Velcro Mounting Base

Car Mount Installation



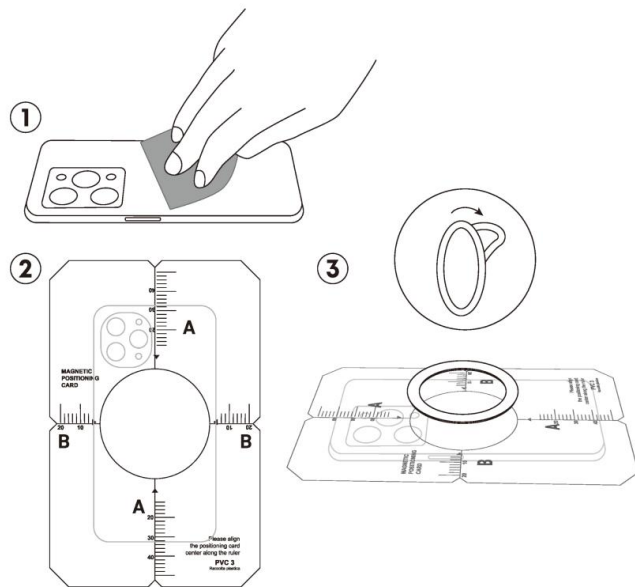
1. Select a suitable installation spot in the car that does not interfere with safe driving. Choose flat surfaces and avoid leather, suede surfaces or surfaces that have been waxed.
2. Clean the installation surface with the provided wet wipes.
3. Once the surface is dry, attach the Velcro and press firmly for 60 seconds.
4. For optimal adhesion, wait 48 hours before attaching the mount base to the Velcro.
 - Adjust the bracket to the desired angle and align it with the Velcro for installation.
5. Adjust the pad angle and mount the phone to begin use.

Note:

- Do not install the mount on airbag modules, as this may cause serious injuries.
- We recommend installing and using at room temperature (50 - 100°F / 10 - 38°C), as extreme temperatures can affect the adhesive's performance.
- When adjusting the bracket after installation, hold the Velcro securely in place.
- The 3M adhesive tape is for single use only. Repeated use may affect its stickiness. If repositioning is required, please replace it with the spare 3M adhesive tape included.

Magnetic Ring Installation

For phones without a magnetic ring and phones with non-magnetic cases.

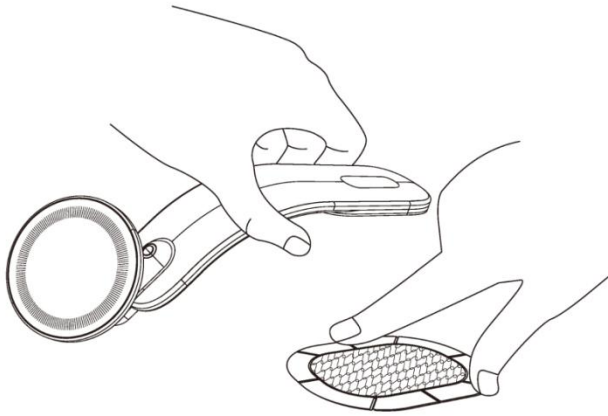


1. Clean the back of the phone with the provided wet wipes.
2. Apply the phone protective film to protect your phone's surface.
 - Not suitable for phone surfaces made of liquid silicone, velvet, or leather.
3. Use the magnetic positioning guide to accurately determine the **center of the phone**, aligning the "A" and "B" markers. This alignment is crucial for the optimal placement of the magnetic ring.
4. Secure the magnetic ring to the designated position and apply pressure for 30 seconds.

Note:

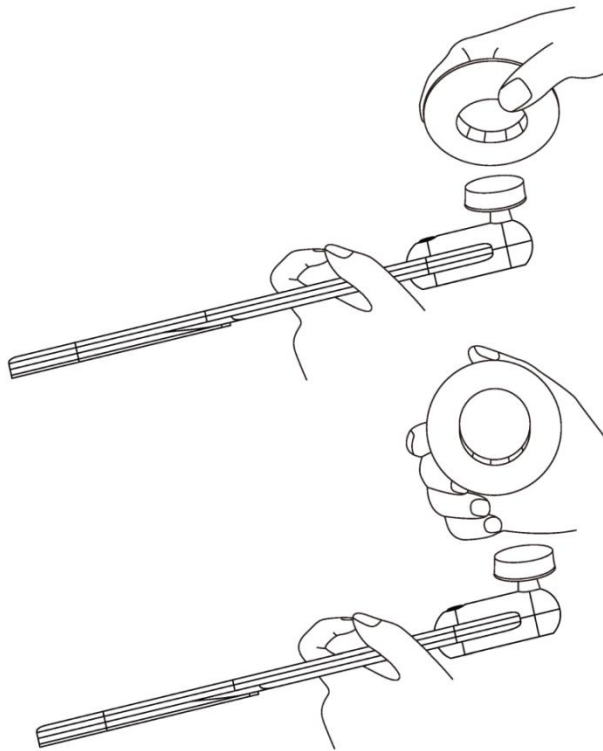
Improper alignment may interfere with wireless charging, leading to overheating and slow charging.

Car Mount Removal



To remove the bracket, hold the Velcro and gently lift the product.

Magnetic Pad Removal



1. Detach the car mount from the Velcro before removal.
2. You may replace the magnetic pad with a wireless charging pad for charging your phone.