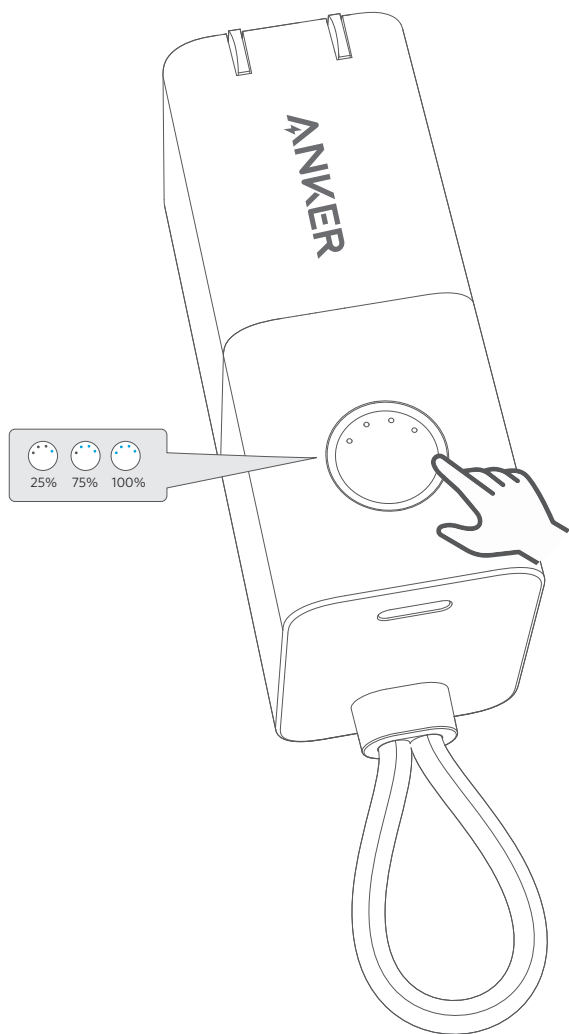


## Checking the Battery Level

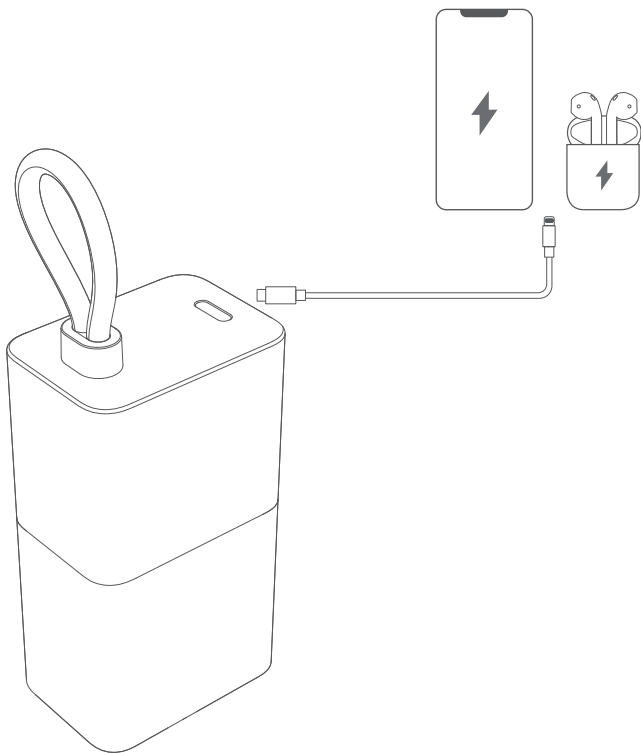
Press the button to check the battery level.



## Charging Your Devices

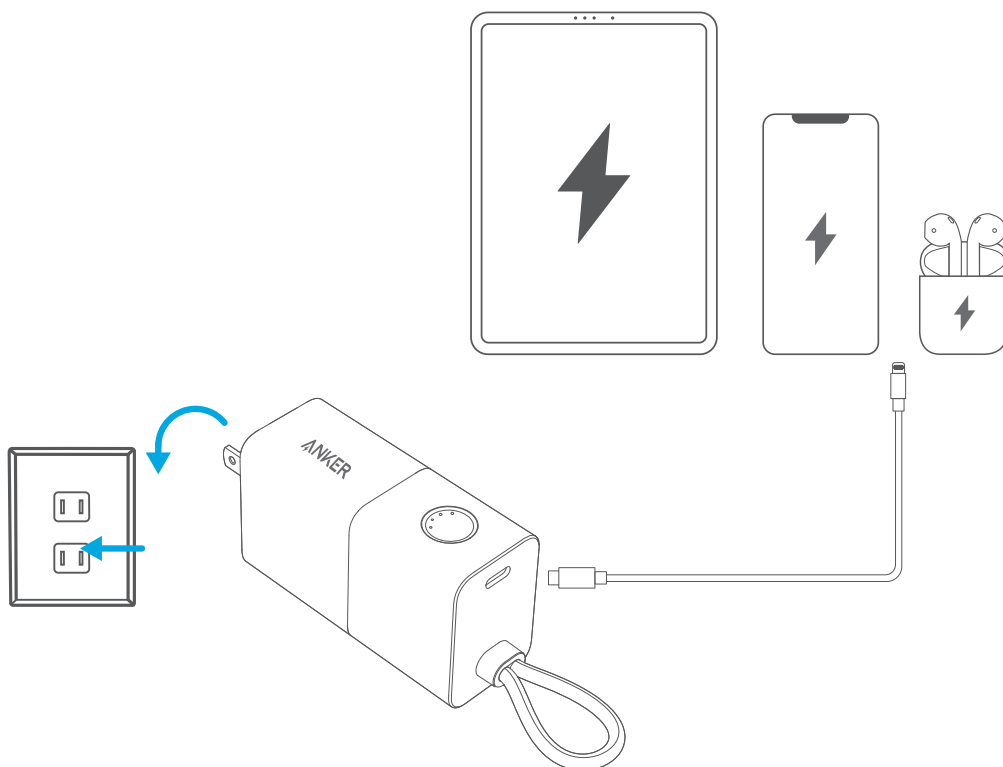
### Power Bank Mode

Charge your devices via the USB-C port.



### Charger Mode

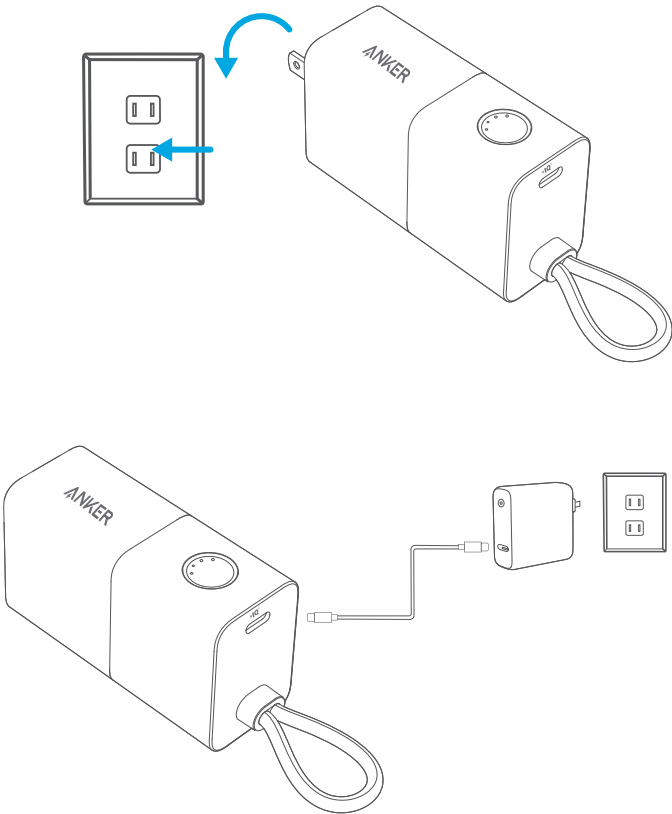
The power bank starts recharging after the connected device is fully charged.



# Recharging Your Power Bank

Two ways to charge the power bank:

- 1. Plug it into a power outlet;
- 2. Recharge via the USB-C port.



- For the fastest and safest charge, use an Anker® cable, your device's original cable, or a MFi certified cable.
- To avoid extra power consumption, unplug the connected cable from the power bank when not in use.

## Specifications

Cell Capacity	5000 mAh
Input	USB-C: 5V ≡ 2.1A AC: 100-240V ~ 50-60Hz 1.5A
Output	Power Bank Mode: 5V ≡ 3A / 9V ≡ 2.22A / 10V ≡ 2.25A Charger Mode: 5V ≡ 3A / 9V ≡ 3A / 10V ≡ 2.25A / 15V ≡ 2A / 20V ≡ 1.5A