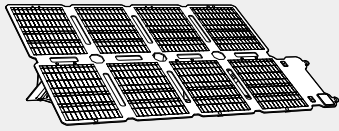


What's in the Box

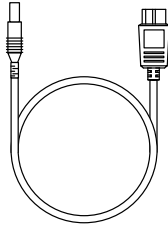
Using Your Product

Specifications

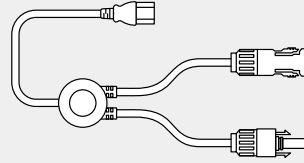
What's in the Box



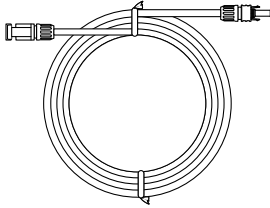
Anker SOLIX PS100X
Portable Solar Panel



XT-60 to DC7909
Charging Cable



Solar to XT-60
Charging Cable



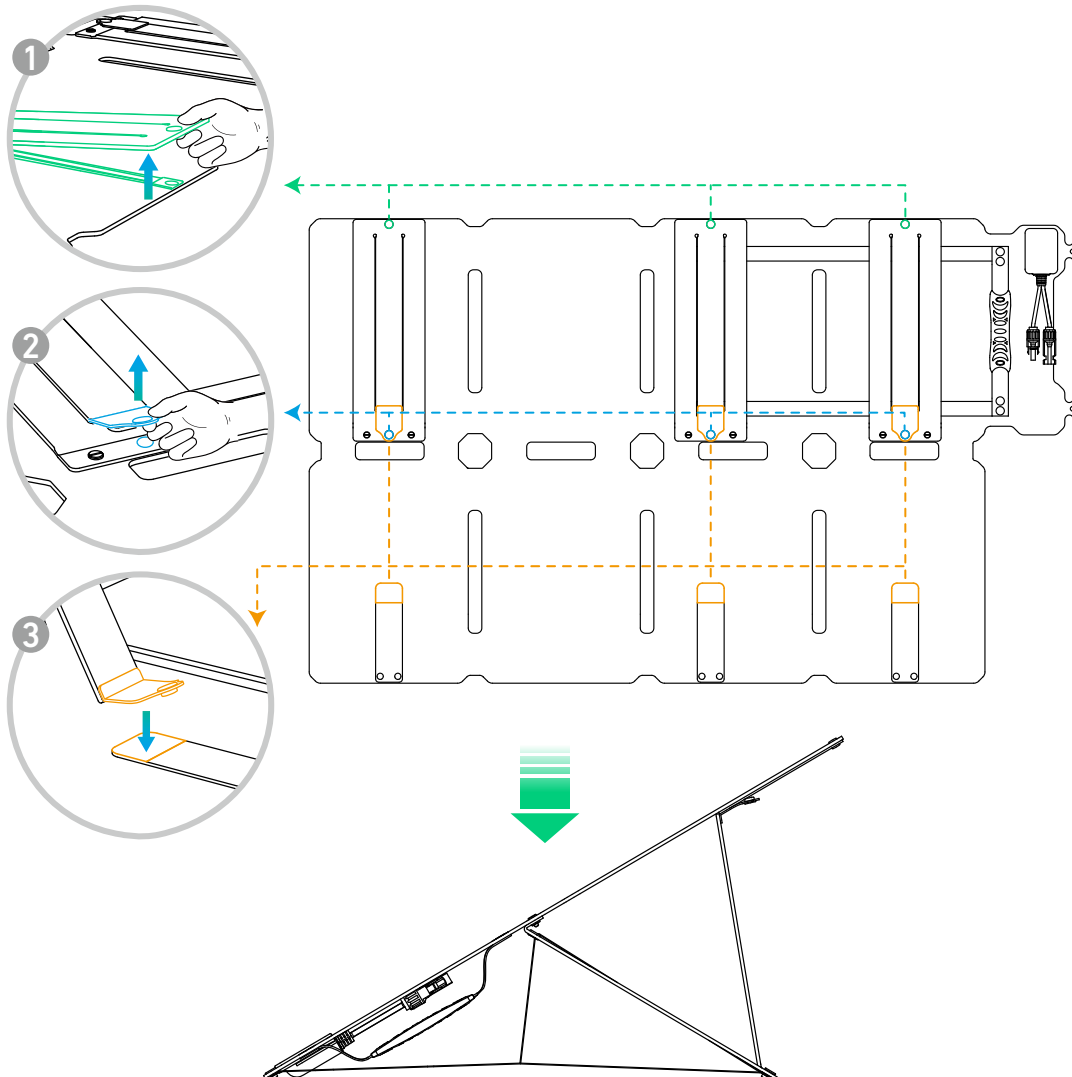
Extension Cable (3 m)

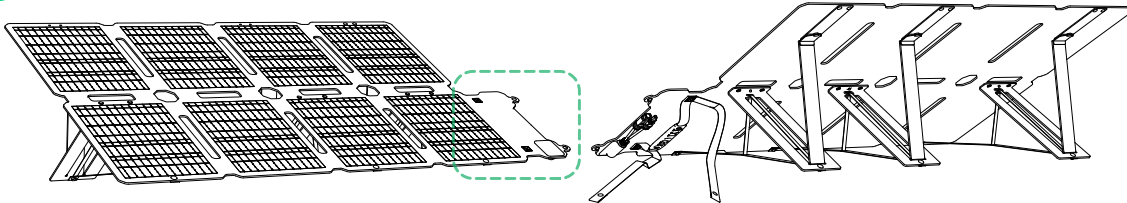
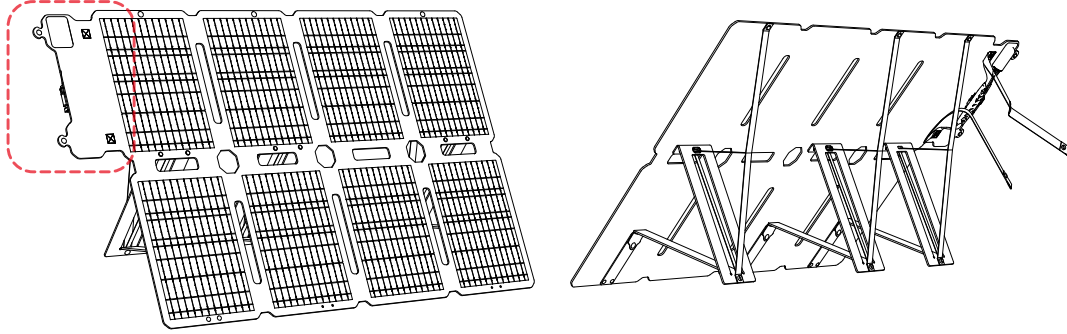


Documents

Using Your Product

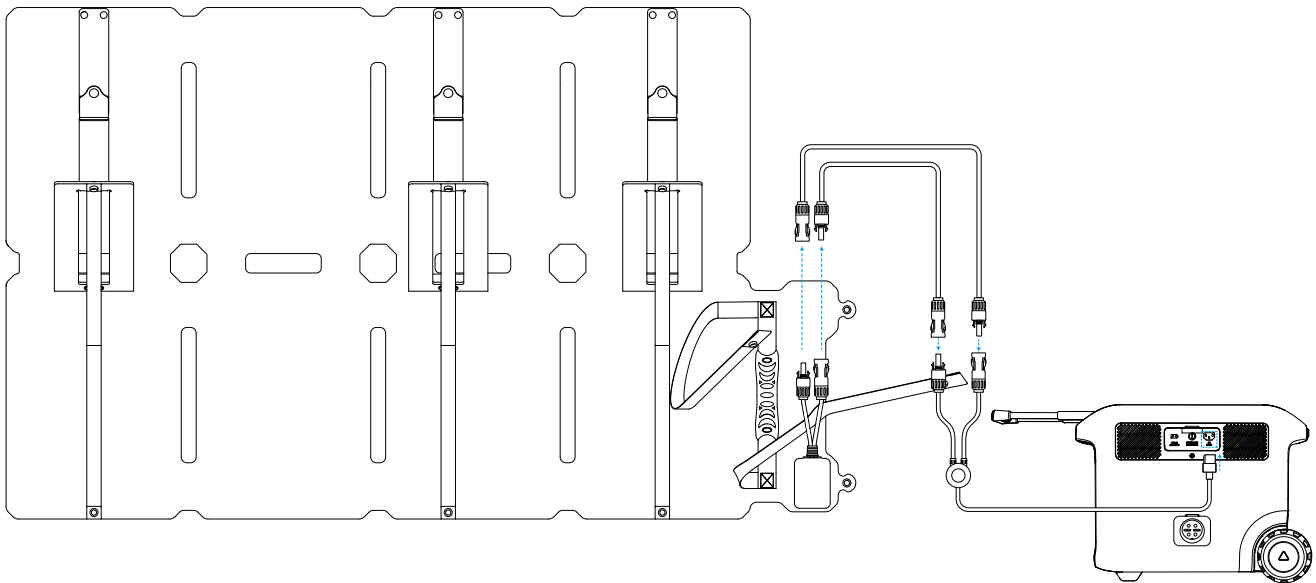
1. Unfold Anker SOLIX PS100X Portable Solar Panel and its stand.



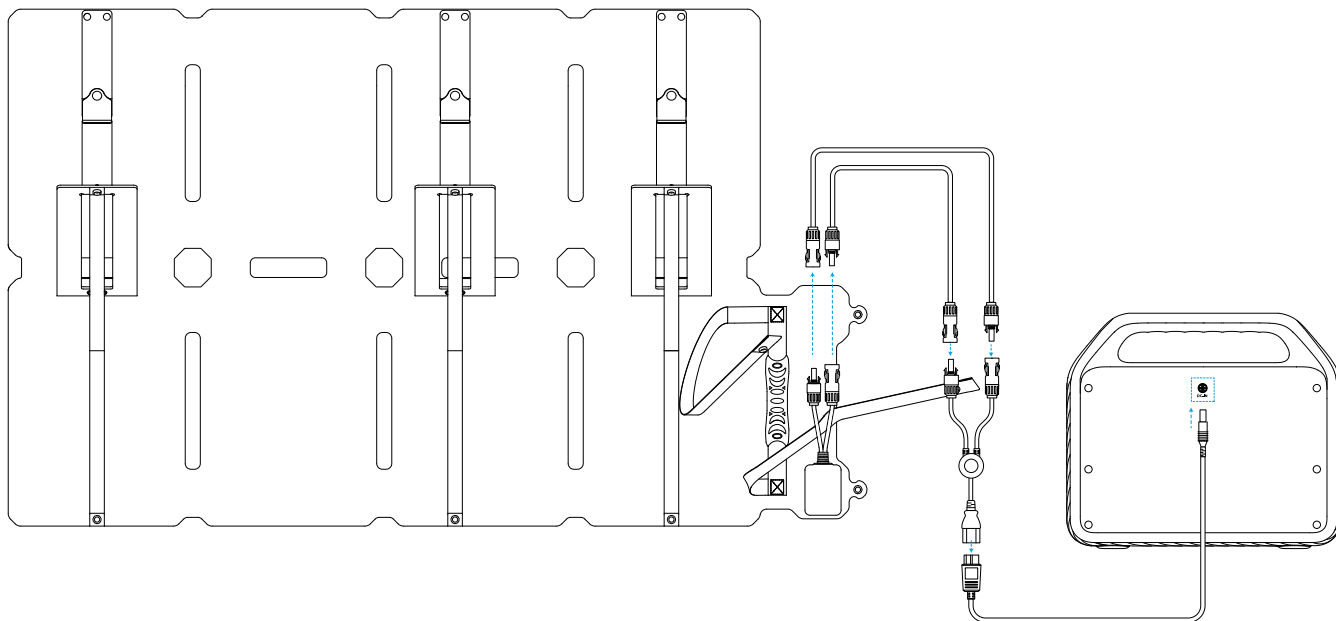


2. Charge your portable power station with the included XT-60 to DC7909 Charging Cable or Solar to XT-60 Charging Cable.

- ❶ If your portable power station solar input port is XT-60, you can charge it with the included Solar to XT-60 Charging Cable. If you want to extend the length of the cable, use the included 3 m extension cable.



- 2 If your portable power station solar input port is DC7909, you can charge it with the included XT-60 to DC7909 Charging Cable.



Notes:

- Anker SOLIX PS100X Portable Solar Panel can not store electricity. You will need a portable power station to store power.
- Charging efficiency is subject to sunlight intensity.
- Keep your portable power station away from direct sunlight. Excessive heat may cause damage.
- 100 W refers to the power of the solar panel, which is not equal to the actual power of the output ports. There will be some power loss when solar energy is transferred into electrical energy, so the actual power of the output ports will be less than the power of the solar panel.

Specifications

Peak Power	100 W
Rated Voltage	16.8 V
Rated Current	5.95 A
Dimension (Folded)	13.98 × 10.91 × 2.56 in / 35.5 × 27.7 × 6.5 cm
Dimension (Unfolded)	46.46 × 27.96 × 0.91 in / 118.0 × 71.0 × 2.3 cm
Net Weight	3.5 kg / 7.7 lb