

AT A GLANCE

INSTALLING YOUR STORAGE DRIVE (Optional)

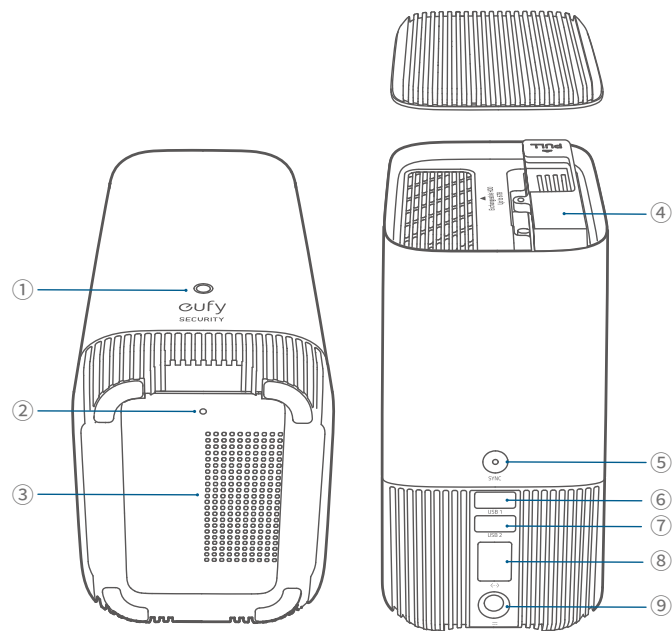
SETTING UP THE SYSTEM

MOUNTING YOUR CAMERA

OTHER INFORMATION

The number of cameras and HomeBase varies.

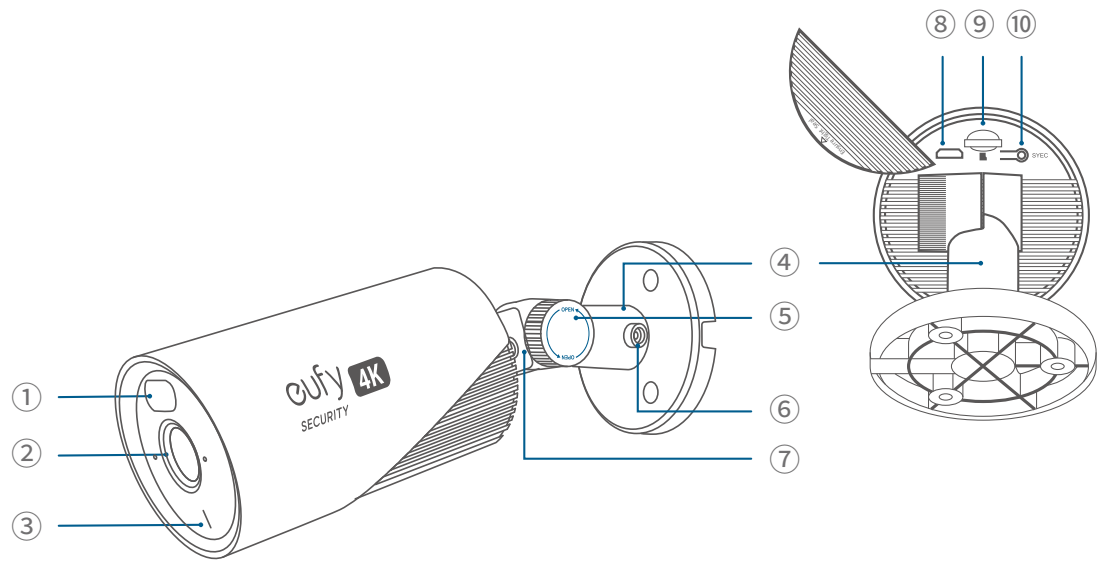
AT A GLANCE
HomeBase S380



Model: T8030

- ① Status LED
- ② Reset Hole
- ③ Speaker
- ④ Hard Drive Bracket
- ⑤ SYNC / ALARM OFF Button
- ⑥ USB Port 1 (Output: 5Vdc/2.4A)
- ⑦ USB Port 2 (Output: 5Vdc/0.7A)
- ⑧ Ethernet Port
- ⑨ Power Port

EufyCam E330 (Professional)



Model: T8600

- ① Spotlight

- ② Camera Lens
- ③ LED Indicator
- ④ Mounting Bracket
- ⑤ Angle Adjustment Knob
- ⑥ Bracket Pole Screw
- ⑦ Camera Bottom Screw
- ⑧ Micro USB Port (for maintenance only)
- ⑨ microSD Card Slot
- ⑩ SYNC Button

INSTALLING YOUR STORAGE DRIVE (Optional)

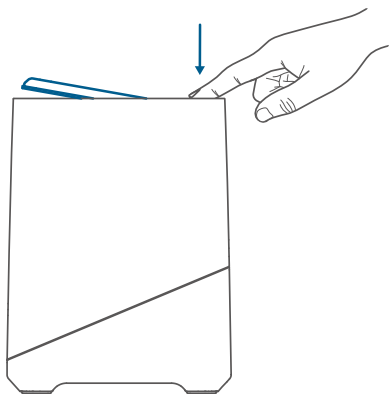
(For 4-Cam Kit) The HomeBase S380 comes with a pre-installed 1TB storage drive for storing video recordings.

(For 2-Cam Kit) You need to install a storage drive (not included) to store video recordings.

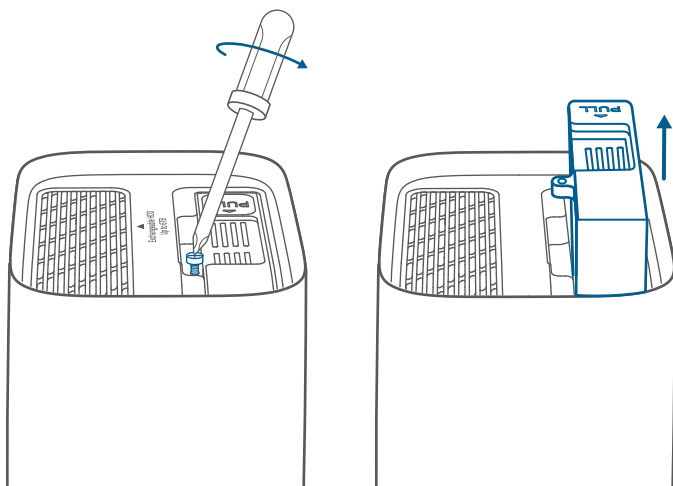
⚠ The HomeBase S380 must be powered off when you install or remove a storage drive.

To avoid data loss, transfer any existing data on your storage drive to another location before adding your storage drive to the HomeBase S380.

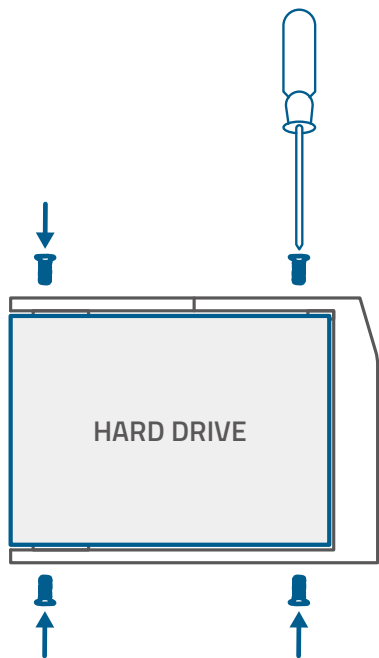
1. Push down the top lid to remove it.



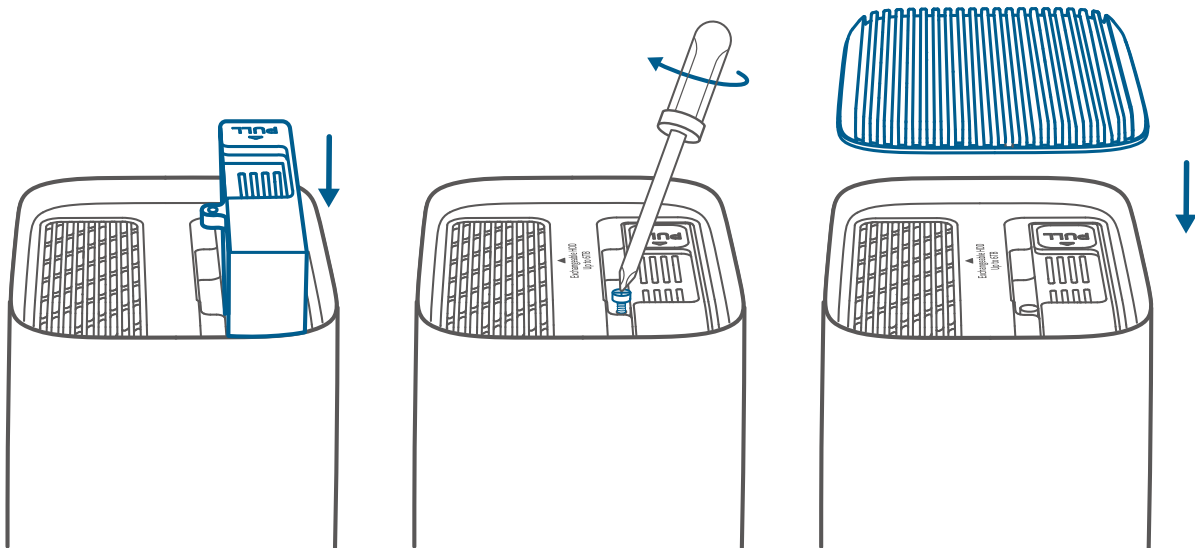
2. Unscrew and take out the storage drive bracket.




3. Fix your storage drive to the bracket with the included screws.



4. Insert and screw the bracket back into the HomeBase S380, then put the top lid back into place.

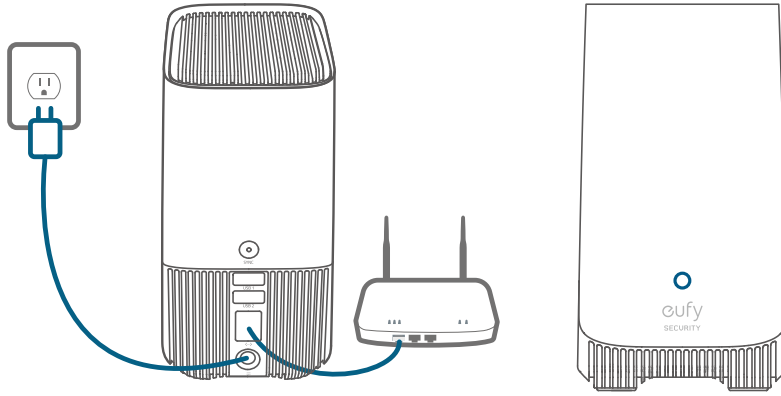


 Your additional storage drive must meet the following requirements:

Type	Hard disk drive (HDD) or solid-state drive (SSD) that uses the SATA interface
Drive Size	2.5 inch
Capacity	Unlimited
Recommended	Western Digital, Seagate, SAMSUNG, Kingston, PNY, Crucial, SanDisk

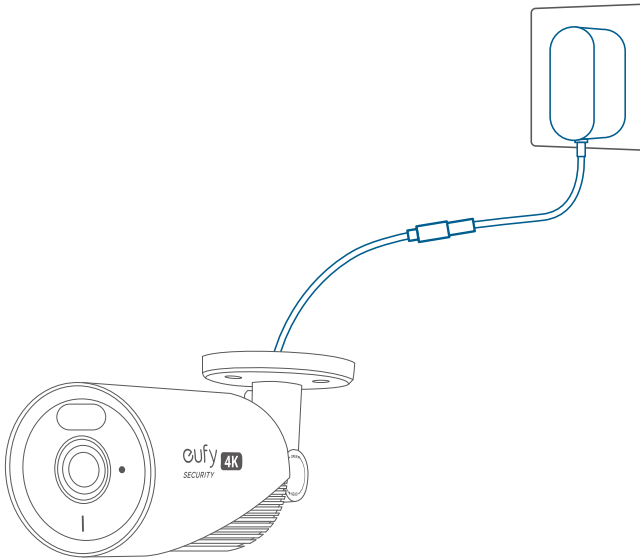
SETTING UP THE SYSTEM

1. Power on the HomeBase S380 and connect to your router using an Ethernet cable. Wait for up to 1 minute and the HomeBase S380 is now ready to be set up.



💡 The power adapter is not waterproof. Please put it in a waterproof enclosure.

2. Connect your cameras to power using their power adapters.

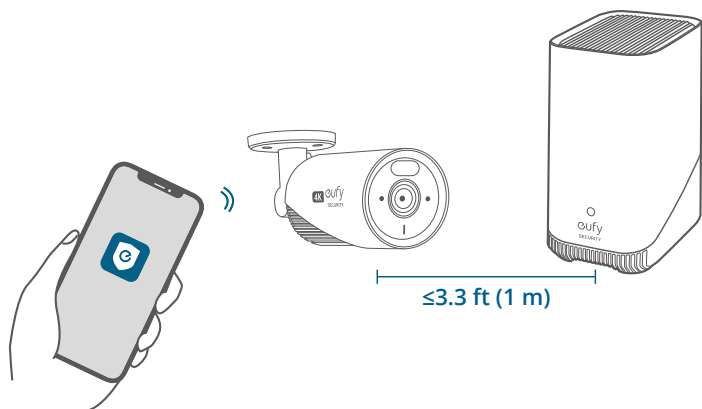


💡 The power adapter is not waterproof. Please put it in a waterproof enclosure.

3. Download and install the eufy Security app, then sign in or create an account.



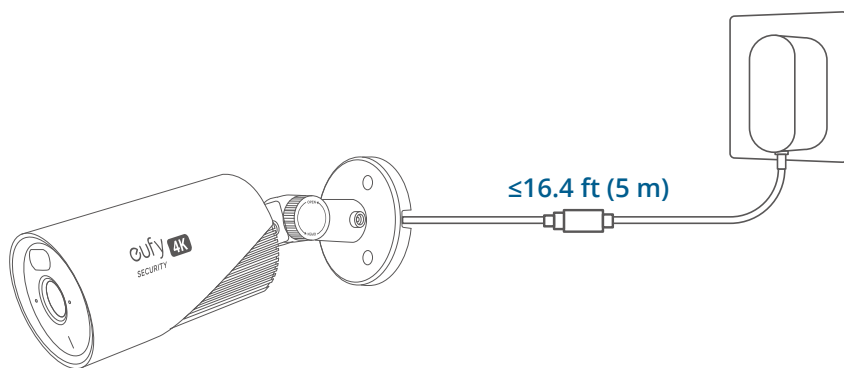
4. Follow the in-app instructions to add the HomeBase S380 and cameras to the device list.



MOUNTING YOUR CAMERA

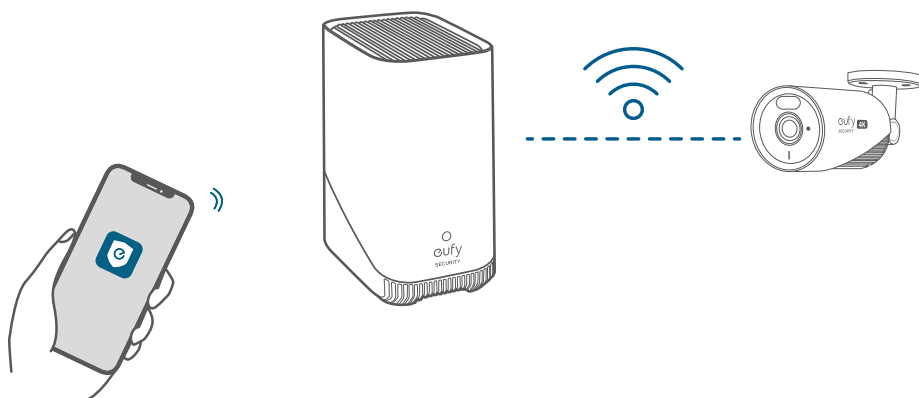
Select a Location and a Height

Select a location that is within reach of a power outlet. If the distance exceeds 16.4 ft (5 m), please consider a separately sold extension cable.



 The power adapter is not waterproof. Please put it in a waterproof enclosure.

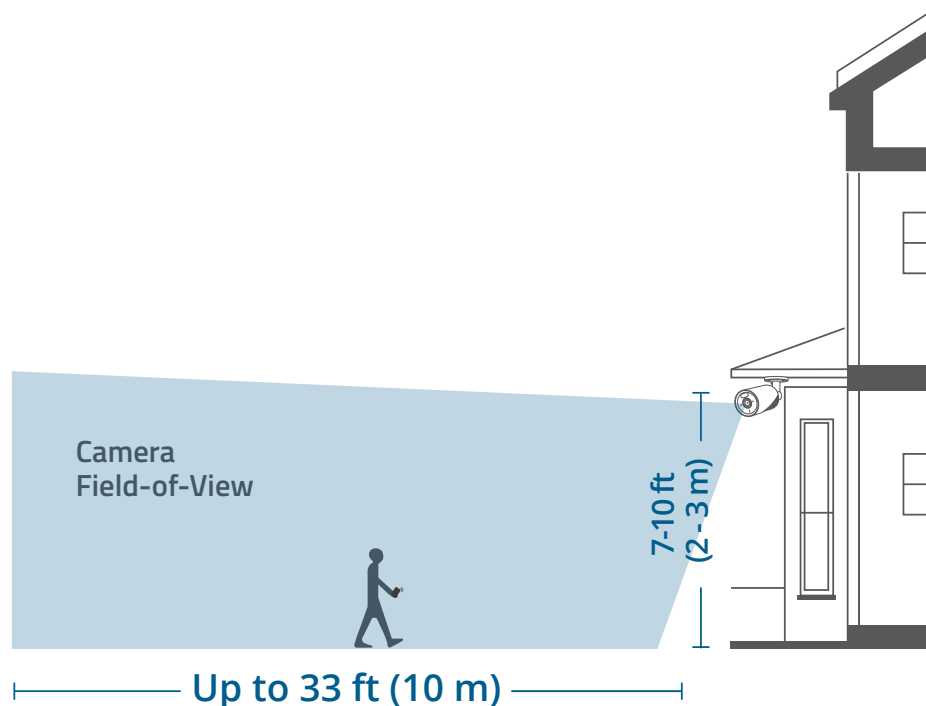
Make sure the camera receives a strong signal from the HomeBase S380 in the location you want to mount it to achieve a smooth video stream in the app.



⚠ Disconnect the camera from the power outlet before mounting.

We recommend mounting the camera 7-10 ft (2-3 m) above the ground. This height maximizes the detection range of the camera.

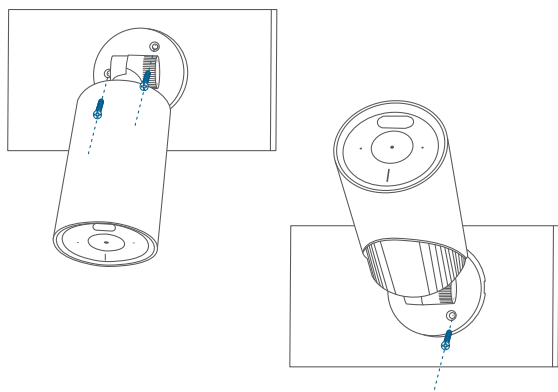
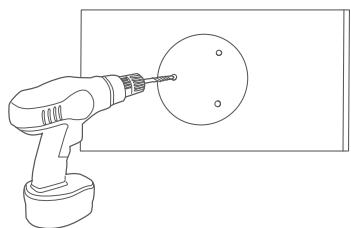
To ensure the image quality and the accuracy of image recognition, do not point the camera lens directly at the sun.



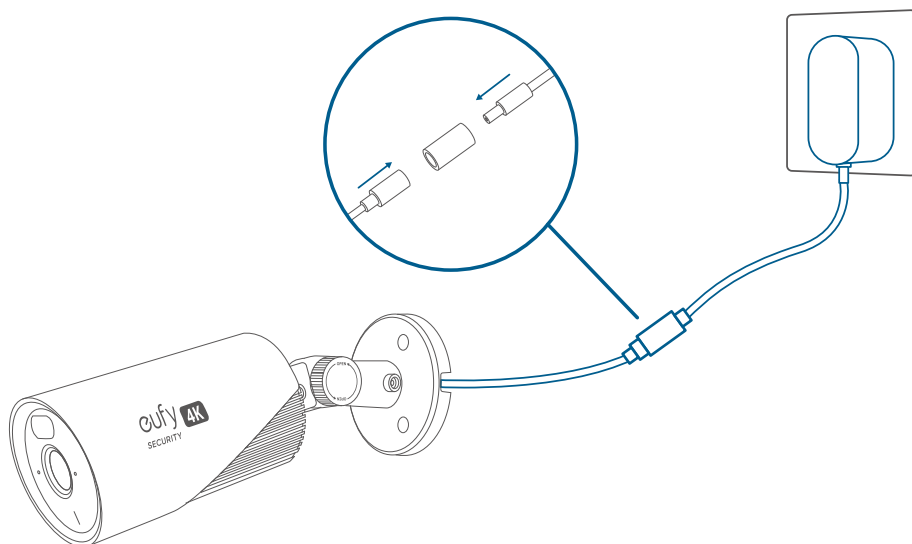
Mount the Camera

1. Use the position template to drill holes with correct spacing, then mount the camera using the provided screws.

Screw anchors are necessary for walls that are made out of hard materials such as concrete, brick, or stucco.



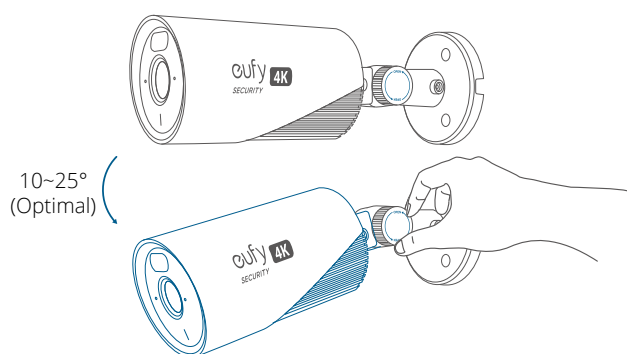
2. Route the power cable into the waterproof case and connect it to the power adaptor, then plug the adaptor into the power outlet.



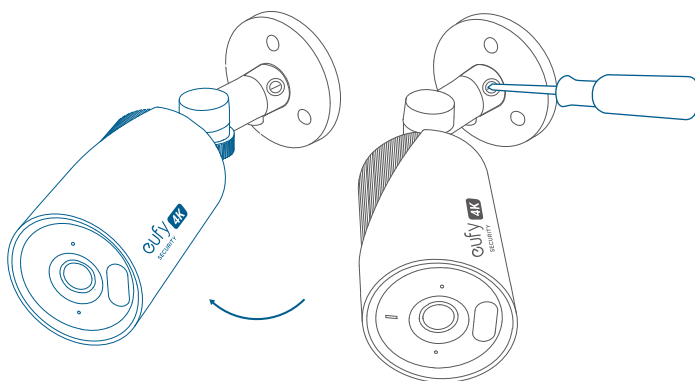
 The power adaptor is not waterproof. Please put it in a waterproof enclosure.

3. Adjust the camera angle and check the view using the live stream in the eufy Security app.

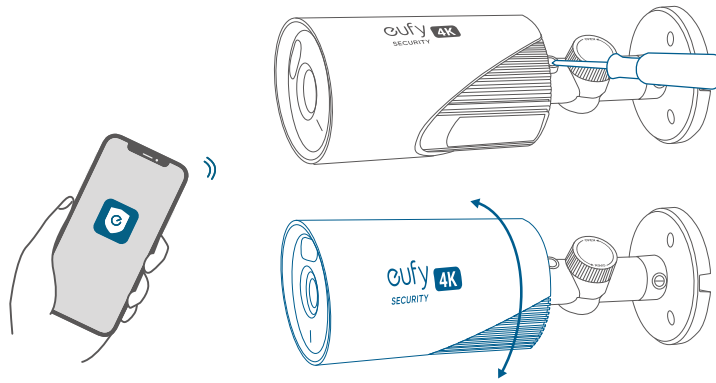
a. Loosen the knob, adjust the camera angle up or down, and then tighten the knob.



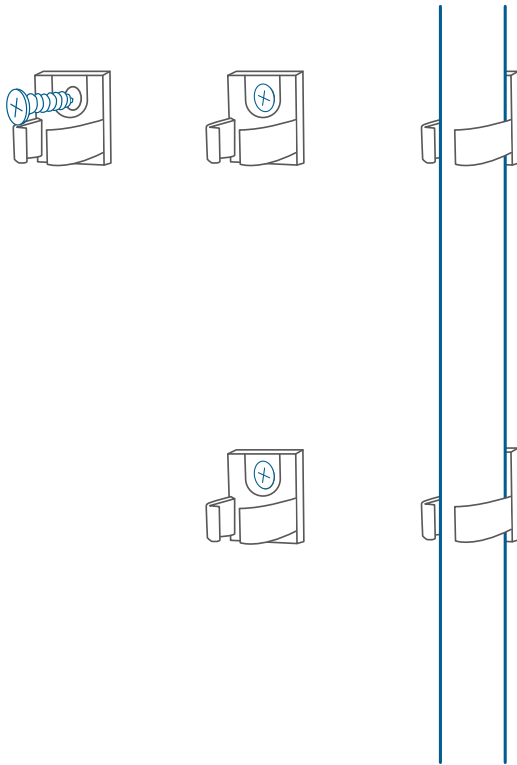
b. Loosen the bracket pole screw, adjust the camera to the left or right, and then tighten the screw.



c. Loosen the camera bottom screw, adjust the viewing angle, and then tighten the screw.



4. Fasten the cable to the wall using the included cable clips if needed.



OTHER INFORMATION

Compliance

Default Open Port 1: Wi-Fi (2.4GHz)

Port Description:

1. When powered on for the first time or after a reset, if there is no configured Wi-Fi information, it may enter network pairing mode (such as AP/BLE pairing);
2. In normal working mode, it will automatically connect to the router and save the SSID and password;
3. If you need to switch Wi-Fi configuration, you can use the App or follow the instructions in the manual to reconfigure the network.
4. TCP monitors Port 15250, and is used for connecting HomeBase.

Model: T8600

1. Power consumption in low power: $\leq 0.5\text{ W}$;

When the product is fully charged and supplied by the EPS, it enters the low power consumption condition after 1 minute.

2. Recommended external adapter:

Brand: ANKER

Manufacturer: Anker Innovations Limited

Model: A2337

Input: 100-240V~ 1.0A, 50-60Hz

Output: 5.0VDC, 2.0A, 10W

Model: T8030

1. Networked standby mode: ≤ 7 W;

When the product is connected to the router via the RJ45 port and provides Wi-Fi signal to T8600, in case of no data transmission, it enters the networked standby mode after 1 minute.

When the product is disconnected from the RJ45 port and does not provide Wi-Fi signal to T8600, in case of no data transmission, it enters the networked standby mode after 1 minute.

2. Adapter information:

Brand: Keyu

Manufacturer: Shenzhen Keyu Power Supply Technology Co., Ltd.

Model: KA2401A-2001200EU

Input: 100-240V~, 50/60Hz or 50-60Hz, 0.65A Max

Output: 20.0VDC, 1.2A, 24.0W