

APP



Google Play and the Google Play logo are trademarks of Google Inc.



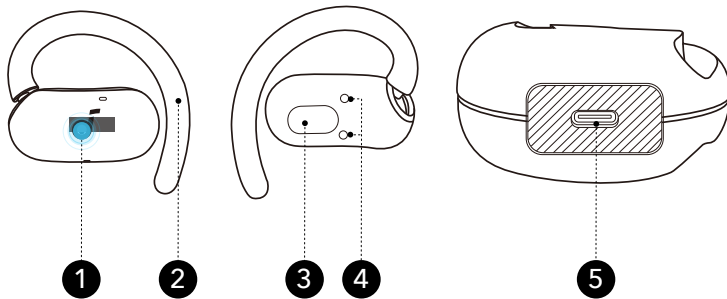
Apple and the Apple logo are trademarks of Apple Inc.



Download the soundcore app to adjust EQ settings, customize touch controls, update firmware, and explore more features.

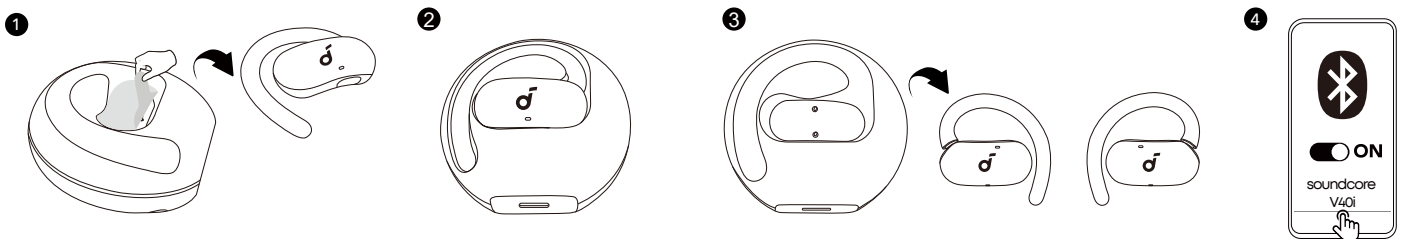
If your earbuds cannot connect to the soundcore app, try re-installing the app or updating it to the latest version available in your mobile app store.

OVERVIEW



1. Touch-Control Area
2. Adjustable Ear Hook
3. Speaker
4. Charging Contactors
5. USB-C Charging Port

POWERING ON AND PAIRING

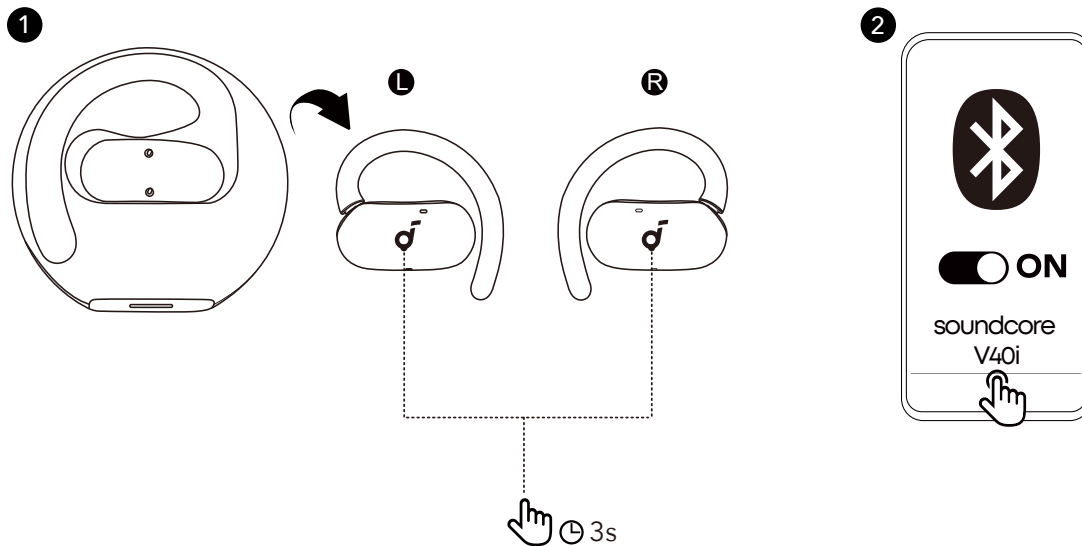


1. For first-time use, remove the insulation stickers.
2. Return the earbuds to the charging case.
3. Take out the earbuds again, they will automatically power on and enter Bluetooth pairing mode.
4. Select "**soundcore V40i**" from your device's Bluetooth list to connect.



Once connected, the earbuds will automatically reconnect to your device every time you take them out, as long as you haven't deleted the pairing history from your device.

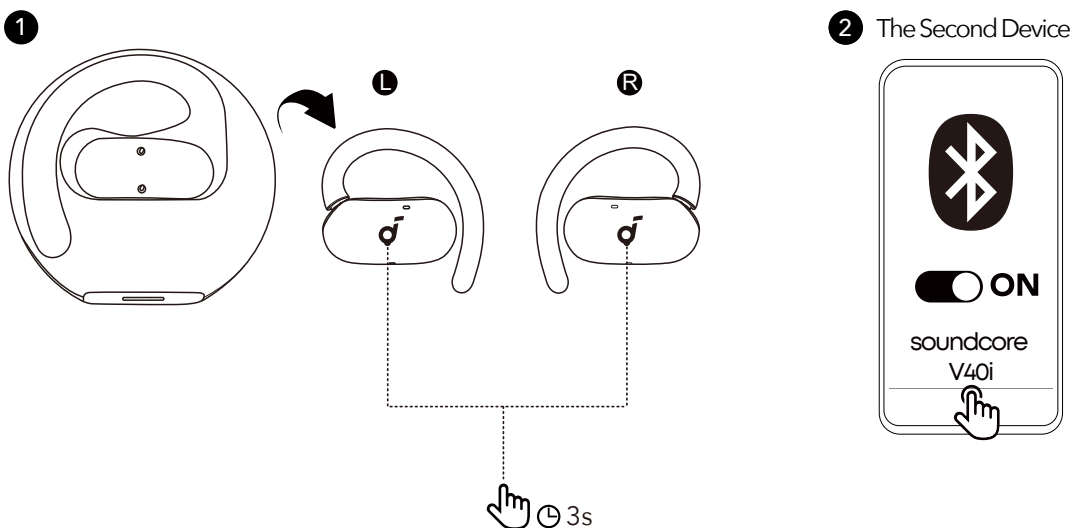
MANUAL PAIRING



To manually enter Bluetooth pairing mode, take the earbuds out of the case, then press and hold the touch-control areas on both earbuds for 3 seconds.

DUAL CONNECTIONS

Dual Connections is enabled by default. To connect your earbuds to two Bluetooth devices simultaneously, there are two methods:



Method 1: Manually Pair with the Second Device

While wearing the earbuds, press and hold the touch-control areas on both earbuds for 3 seconds until you hear a sound prompt. You can then proceed to pair with the second device.



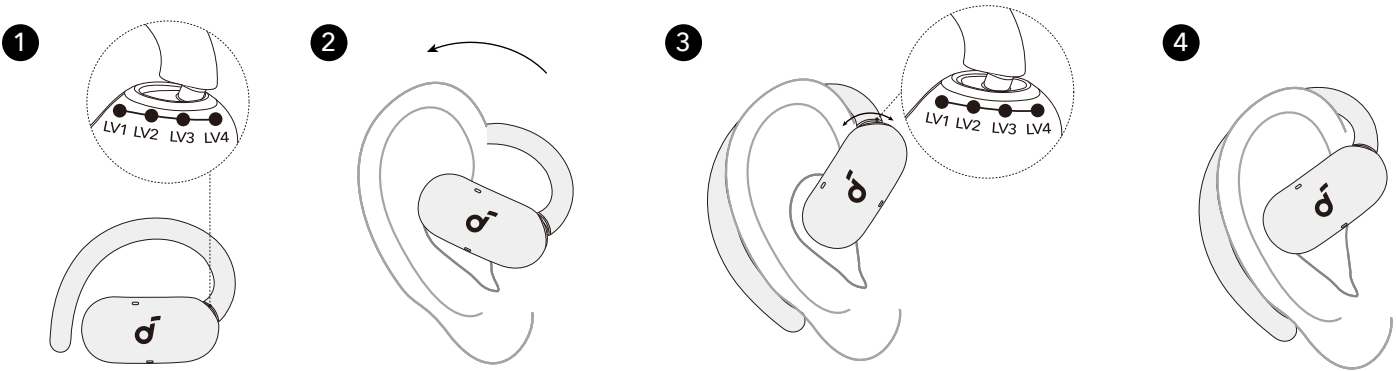
If your earbuds have been connected to two devices, remove at least one before pairing a new device.

Method 2: Use the soundcore App

In the soundcore app, tap **Dual Connections** on the main interface, then proceed to **Connect New Device**.

Note: The option names may vary based on your app's language settings. Follow the corresponding terms in your app to complete the process.

WEARING



- 1. Set the ear hooks to the LV4 position, which offers the largest fit.
- 2. Put on the earbuds and rotate the ear hooks along your outer ear for proper positioning.
- 3. Adjust between the four positions to find the most comfortable and secure fit.

CONTROLS

Touch Control Area

Dual Earbuds

▶ / ▶||
R x2

▶▶
L x2

📞
L / R x2

📞 / 📞
L / R 2s

Single Earbud

▶ / ▶||
x2

📞
x2

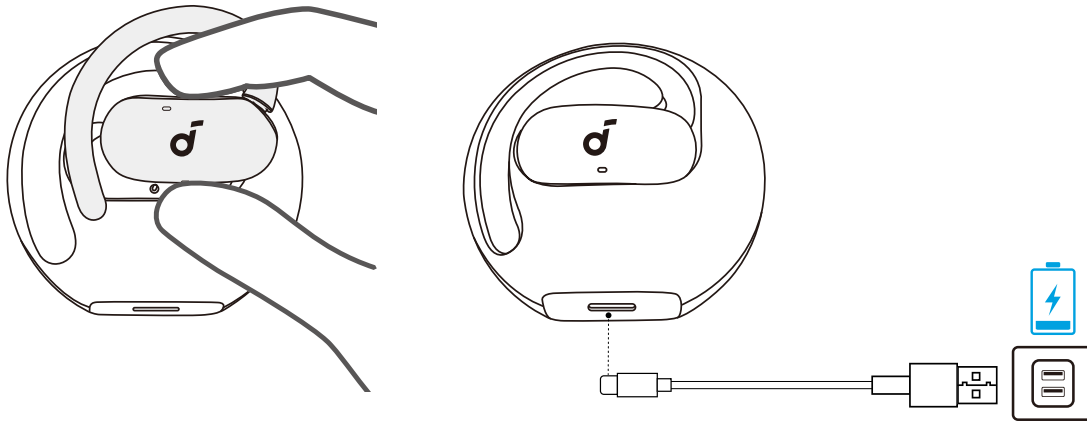
📞 / 📞
2s

		Using Dual Earbuds	Using Single Earbud
	Play / Pause Audio	Double Tap (R)	Double Tap
	Play the Next track	Double Tap (L)	/
	Answer a Call	Double Tap (L / R)	Double Tap
	Reject a Call / End a Call	Tap and Hold for 2 Seconds (L / R)	Tap and Hold for 2 Seconds

Customize Touch Controls in the soundcore App

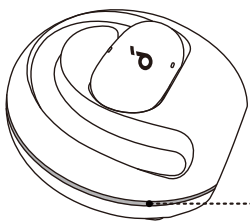
Access **Controls** on the home page to customize touch commands for the left or right earbud, including volume adjustment, skipping tracks, play/pause, and voice assistant activation.

CHARGING



1. Place the earbuds back into the charging case.
 - Ensure the earbuds and the USB-C charging port are fully dry before charging.
2. Connect the charging case to a power supply using the included USB-C cable. The case's LED indicator will flash during charging. Once fully charged, the LED will stay on for 3 seconds before turning off.
 - The case fully recharges in about 2.5 hours via USB-C.

LED Indicator Guide



Charging: Light breathes.
Full: Light off.

When the earbuds are returned to the case:

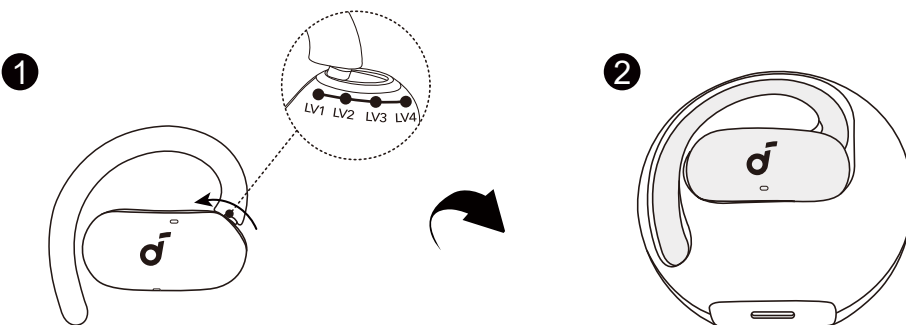


Case with 20% charge or more:
Light stays on for 3s.



Case with less than 20% charge:
Light flashes 6 times.

POWERING OFF

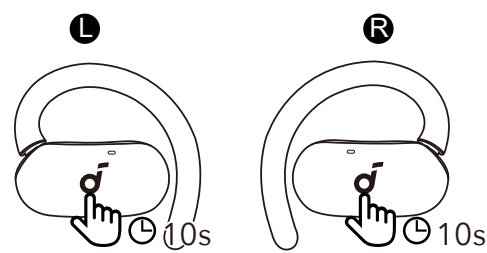


To power off, set the ear hooks to the LV1 position and return the earbuds to the case.



When out of the case, the earbuds will automatically power off after 30 minutes if not connected. Adjust the shutdown time in the soundcore app.

RESET



Reset the earbuds if they're malfunctioning. While wearing them, tap and hold the touch-control areas on both earbuds for 10 seconds until you hear a voice prompt. Your earbuds are now successfully reset.

FIRMWARE UPDATE

When the earbuds are connected to the app, you'll be notified if a new firmware version is available. Keep the earbuds in the charging case until the update is complete and avoid using them during the process.

SPECS

Specifications are subject to change without notice.

Input	Charging Case: 5V \equiv 0.5A
Output	Charging Case: 5V \equiv 0.2A (0.1A Per Port)
Battery Capacity	Earbuds: 60mAh Charging Case: 470mAh
Charging Time	Earbuds: 1H Charging Case: 2H
Driver	16 × 13 × 4mm
Frequency Response	20Hz - 20kHz
Impedance	16Ω
Waterproof and Dustproof Rating (Earbuds)	IP55
Bluetooth Version	5.4
Bluetooth Range	10m (32ft)

CUSTOMER SERVICE



service@soundcore.com
support.mea@soundcore.com (For Middle East and Africa Only)
support@anker.com (日本)
support.kr@anker.com



+1 (800) 988 7973 (US/Canada)
+44 (0) 1604 936200 (UK)
+49 (0) 69 9579 7960 (DE)
03 4455 7823 (日本)
+86 400 0550 036 (中国)
+82 1666-8470 (한국)
+971 8000320817 (UAE)
+966 8008500030 (KSA)
+965 22069086 (Kuwait)
+20 8000000826 (Egypt)
+61 3 8331 4800 (Australia)
+90 (850) 460 14 14 (Türkiye)
+8 (800) 511-86-23 (Russia)
000-8000-504-414 (India)