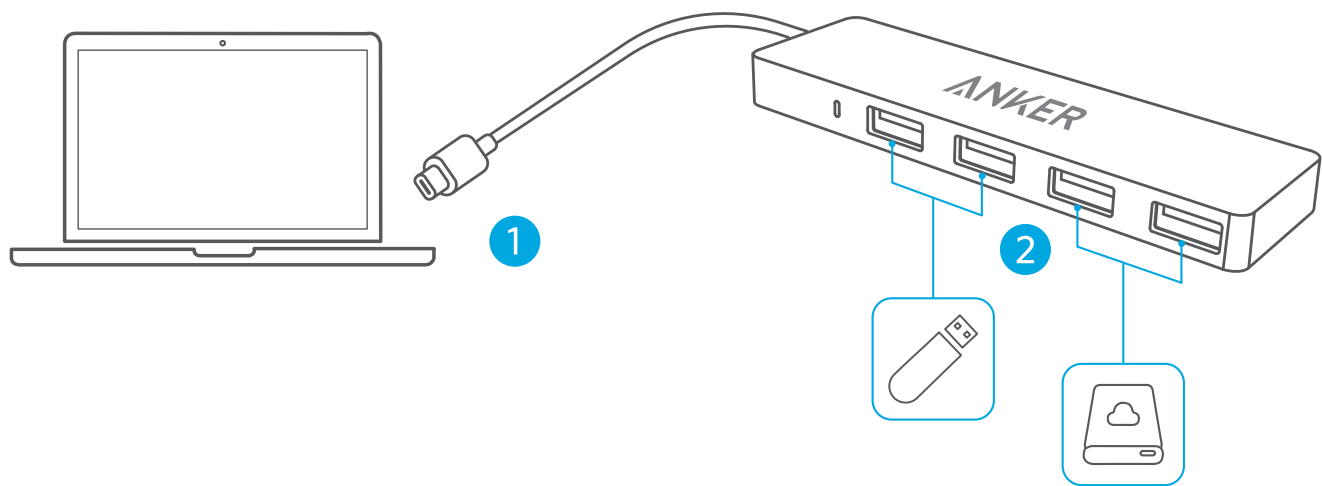


# Using Your Hub

- 1. Plug it in
- 2. Connect your devices



• To transfer data at superfast speeds, your computer, peripherals, cables and software must all support USB 3.0..



USB 2.0



USB 3.0

To ensure stable connections, connected devices should not exceed a combined current of 900 mA. Devices are usually rated as follows:

	Mouse	100 mA
	Camera	300 mA
	Keyboard	500 mA
	External Hard Drive	900 mA

## Specifications

Data Transfer Speed	5Gbps
Supported Systems	macOS 12 or later, Windows 10 or later, ChromeOS

Note: The 'x' of SN Code: xxxxxxxxxxxxxxxx is a variable, see below table.

Variable 'x'	Range of variable	Content
Seventh	0-9 or A-F	Denotes the hardware version which is not effected on the safety compliance.
Eighth	8,9,A,B,C...	Denotes the year, 8 means 2018, 9 means 2019, A means 2020, B means 2021, C means 2022, and so on.
Ninth and tenth	01,02,03...	Denotes weeks, 01 means the first week in this year, 02 means the secondary week in this year, and so on.
Eleventh	1-7	Denotes date, 1 means Monday, 2 means Tuesday..., 7 means Sunday and so on.
The last five	00001-99999	Denotes serial No.

