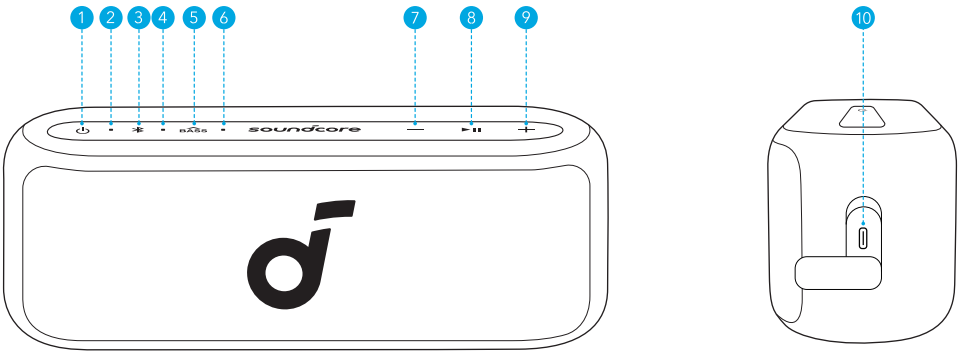


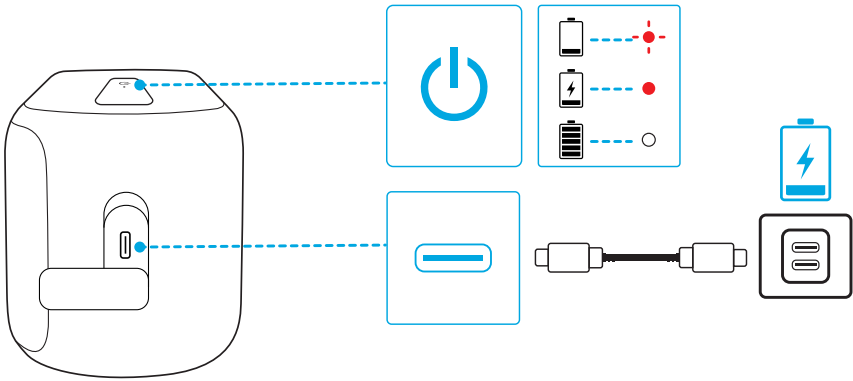
At a Glance



1	Power Button	6	BassUP LED
2	Power LED	7	Volume Down Button
3	Bluetooth Button	8	Play/Pause Button
4	Bluetooth LED	9	Volume Up Button
5	BassUP Button	10	USB-C Charging Port

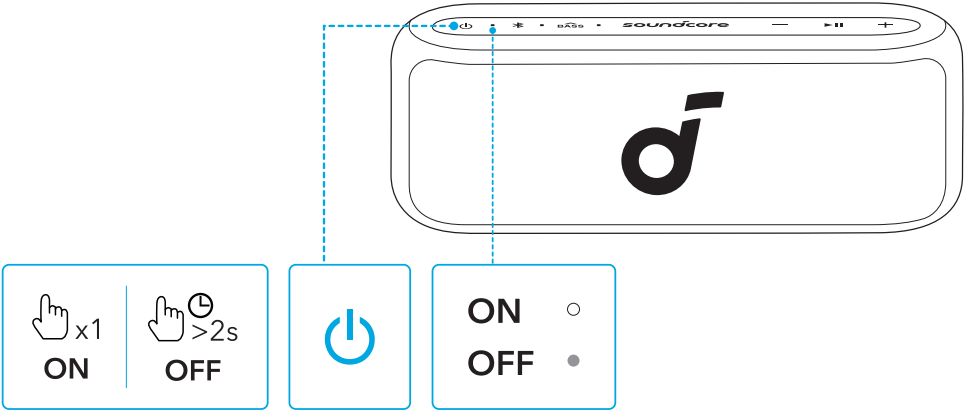
Charging Your Speaker

- Use a certified USB-C cable and charger to prevent any damage.



Flashing Red	Low Battery
Steady Red	Being Charged
Steady White	Fully Charged

## Powering On / Off



	Press or Press and Hold for 2 Seconds	Power On
	Steady White	
	Press and Hold for 2 Seconds	Power Off
	Light Off	

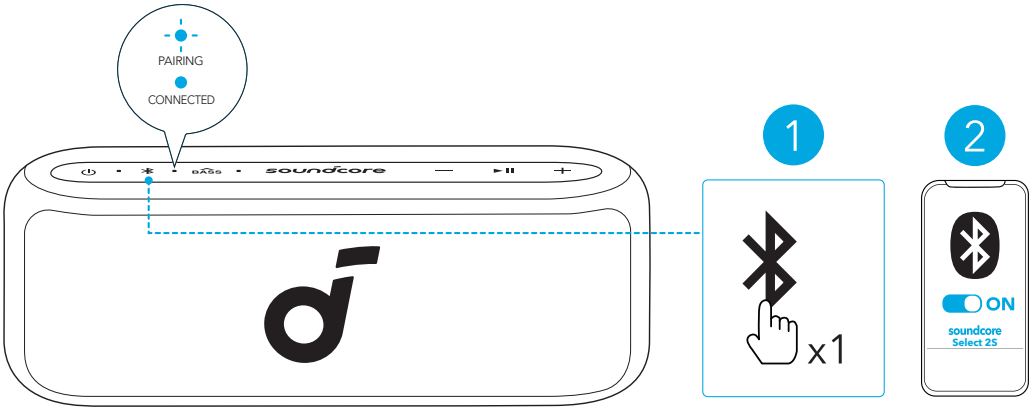


This speaker will power off automatically after 20 minutes if no device is connected.

## Using Your Speaker

### Bluetooth Mode

Press the Bluetooth button to enter Bluetooth pairing mode, then select "**soundcore Select 2S**" from the Bluetooth list to connect.



	Press	Enter / Exit Bluetooth Pairing Mode
	Flashing Blue	Bluetooth Pairing
	Steady Blue	Bluetooth Connected

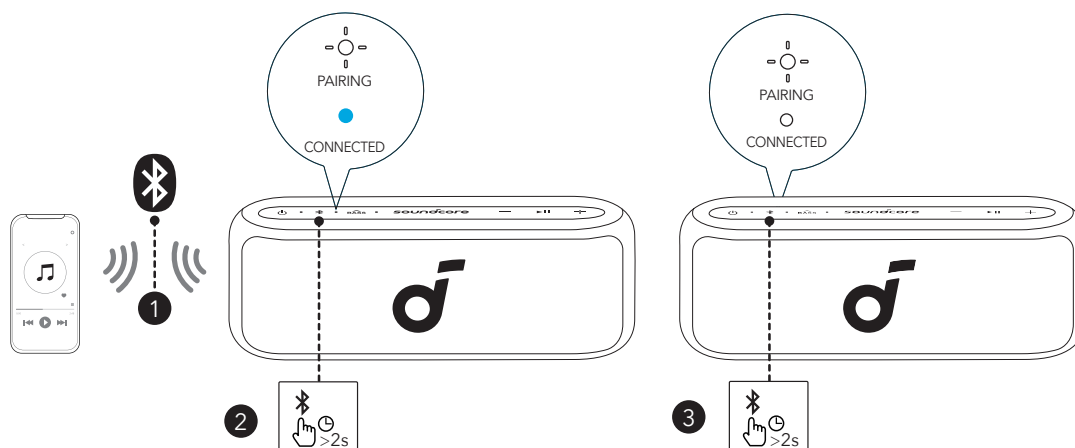


- To re-enter Bluetooth pairing mode, press the Bluetooth button once.
- This speaker can only play music on one mobile device at a time. To play from another connected device, pause the device that's currently active first.
- Each time you power on your speaker, it will automatically connect to your last connected device if available within the Bluetooth range. If not, press the Bluetooth button to enter Bluetooth pairing mode.

## True Wireless Stereo (TWS) Mode

Two identical soundcore speakers can pair with each other for stereo sound. Both speakers can play the same audio (one as the left channel and the other as the right channel).

With one speaker connected to a smartphone, press and hold the Bluetooth button for 2 seconds on two speakers to enter TWS pairing mode.



	Press and Hold for 2 Seconds	Enter TWS Pairing Mode
	Flashing White	TWS Pairing
	Steady Blue (Speaker 1)	TWS Connected
	Steady White (Speaker 2)	

## Button Controls

	Press or Press and Hold for 2 Seconds	Power On
	Press and Hold for 2 Seconds	Power Off
	Press	Play / Pause
	Press Twice	Next Track
	Press Three Times	Previous Track
	Press	Answer / End a Call
	Press and Hold for 2 Seconds	Reject a Call
	Press	Enter Bluetooth Pairing Mode
	Press and Hold for 2 Seconds	Enter / Exit TWS Pairing Mode
	Press	Volume Up / Down
	Press	Turn BassUP On/Off

## soundcore App

Download the soundcore app to enhance your experience.



Google Play and the Google Play logo are trademarks of Google Inc.



Apple and the Apple logo are trademarks of Apple Inc.



**Product information:** Check the product name and software version, or read the user manual.

**Firmware update:** You will be informed once a new version of firmware is detected when you connect the speaker with the app.

**Battery status:** Indicates the remaining battery level of your speaker.

**Volume control:** Adjust the volume level via the app without pressing the buttons on the speaker.

**EQ settings:** There are various preset EQ settings you can choose from in the app to optimize your experience while enjoying different music genres.

**Set Auto-power off time:** The speaker will automatically power off when time is up.

**Speaker prompt:** Mute or restore the speaker prompt while powering on/off.

## Reset

Press and hold the Bluetooth button and volume up button simultaneously for at least 4 seconds to reset the speaker.

## Specifications

Specifications are subject to change without notice.

Power Input	5V = 2A
Battery Capacity	2400mAh/7.3V
Audio Output Power	20W
Speaker Driver	1.5" Full Range x2
Charging Time	< 4 Hours
Playtime (varies by volume level and music content)	Up to 16 Hours
Waterproof Level	IPX7
Bluetooth Version	V5.4
Bluetooth Range	70m / 230ft

Hereby, Anker Innovations Limited declares that this device is in compliance with The Product Security and Telecommunications Infrastructure (Security Requirements for Relevant Connectable Products) Regulations 2023. For the Statement of Compliance, visit the website:  
<https://uk.soundcore.com/pages/psti-related>.

Note: The 'x' of SN Code: xxxxxxxxxxxxxxxx is a variable, see below table.

Variable 'x'	Range of variable	Content
Seventh	0-9 or A-F	Denotes the hardware version which is not effected on the safety compliance.
Eighth	8,9,A,B,C...	Denotes the year, 8 means 2018, 9 means 2019, A means 2020, B means 2021, C means 2022, and so on.
Ninth and tenth	01,02,03...	Denotes weeks, 01 means the first week in this year, 02 means the secondary week in this year, and so on.
Eleventh	1-7	Denotes date, 1 means Monday, 2 means Tuesday..., 7 means Sunday and so on.
The last five	00001-99999	Denotes serial No.

1. Power consumption in standby mode:  $\leq 0.5W$

2. Power management:  $\leq 20min$

3. Information of applicable adapter:

Brand: ANKER

Manufacturer: Anker Innovations Limited

Model: A2337

Input: 100-240V~ 1.0A, 50-60Hz

Output: 5.0V  $\rightleftharpoons$  3.0A 15.0W / 9.0V  $\rightleftharpoons$  3.0A 27.0W / 12.0V  $\rightleftharpoons$  2.5A 30.0W / 15.0V  $\rightleftharpoons$  2.0A 30.0W / 20.0V  $\rightleftharpoons$  1.5A 30.0W (30.0W Max)

Default Open Port: Classic Bluetooth

Port Description: After the device is powered on, Classic Bluetooth visibility (or pairing mode) is automatically enabled, providing Bluetooth pairing (or control) services. The Bluetooth service is disabled when the device is powered off.