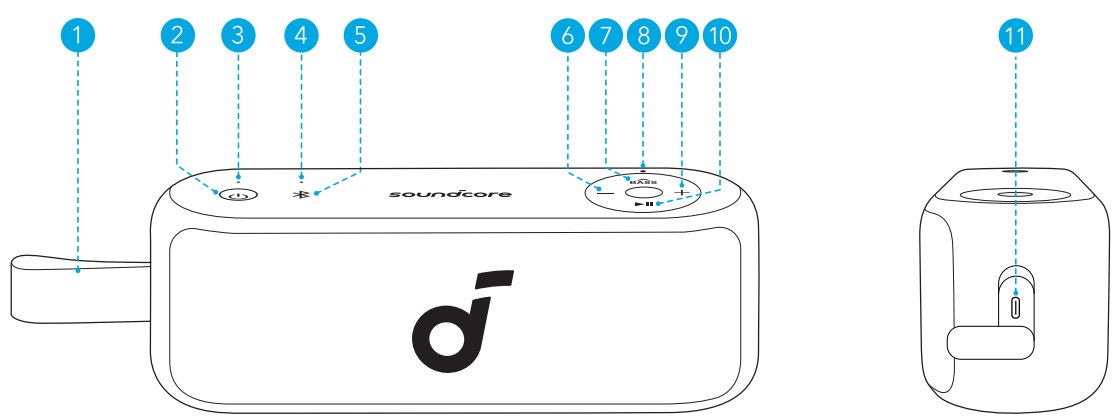


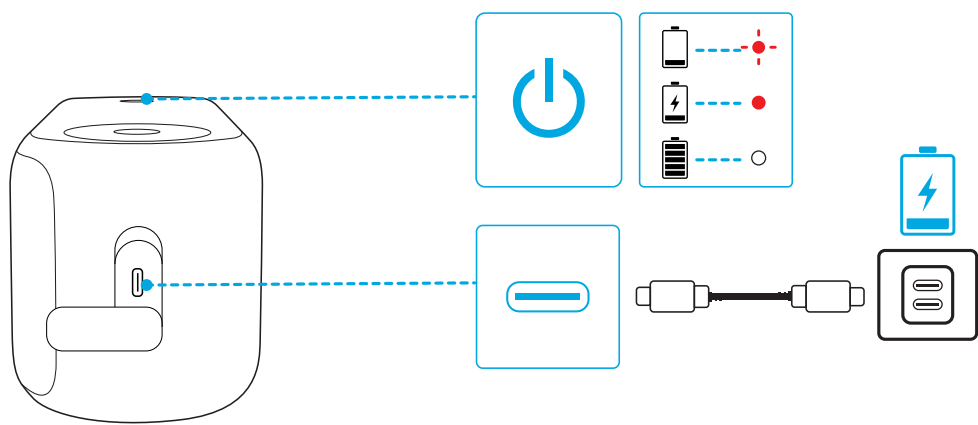
At a Glance



1	Strap	7	BassUP Button
2	Power Button	8	BassUP LED
3	Power LED	9	Volume Up Button
4	Bluetooth LED	10	Play/Pause Button
5	Bluetooth Button	11	USB-C Charging Port
6	Volume Down Button		

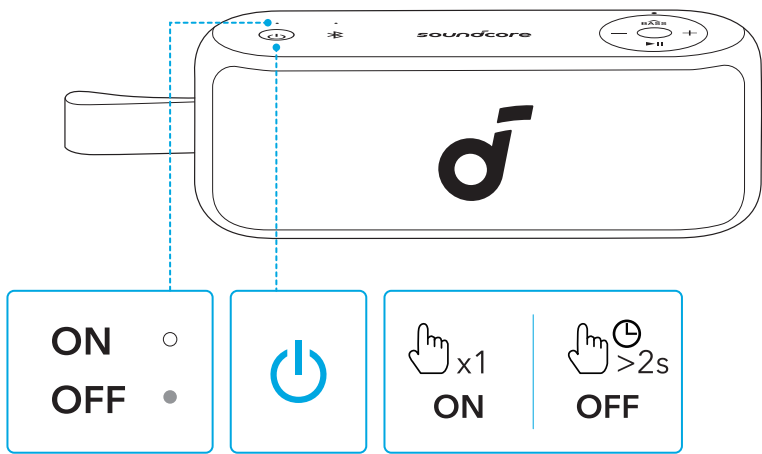
Charging Your Speaker

- Use a certified USB-C cable and charger to prevent any damage.



	Flashing Red	Low Battery
	Steady Red	Being Charged
	Steady White	Fully Charged

Powering On / Off



	Press or Press and Hold for 2 Seconds	Power On
	Steady White	
	Press and Hold for 2 Seconds	Power Off
	Light Off	

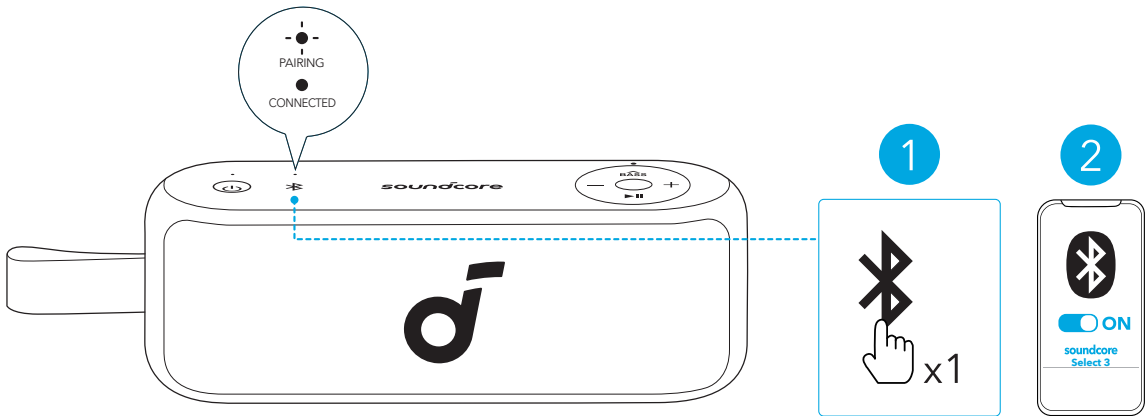


This speaker will power off automatically after 20 minutes if no device is connected.

Using Your Speaker

Bluetooth Mode

Press the Bluetooth button to enter Bluetooth pairing mode, then select "**soundcore Select 3**" from the Bluetooth list to connect.



	Press	Enter / Exit Bluetooth Pairing Mode
	Flashing Blue	Bluetooth Pairing
	Steady Blue	Bluetooth Connected

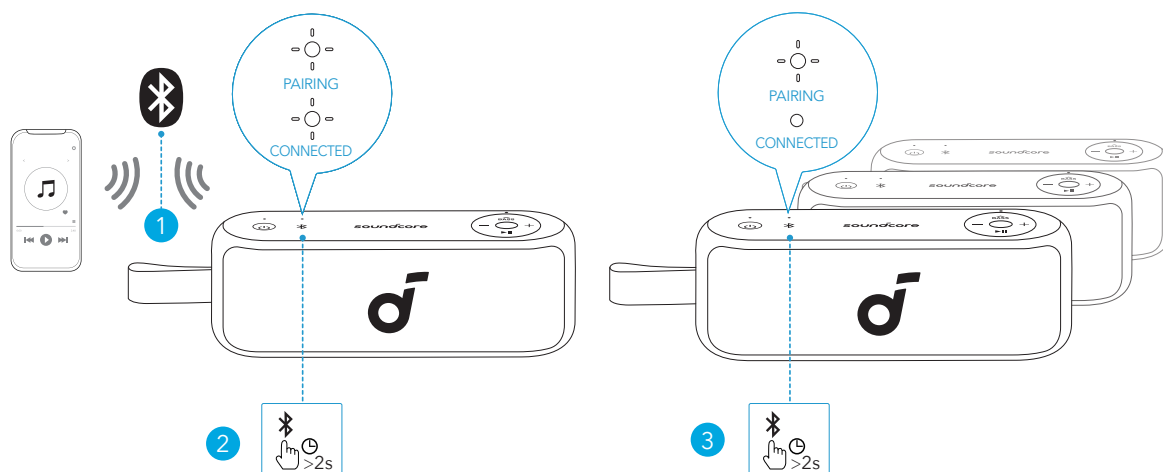


- To re-enter Bluetooth pairing mode, press the Bluetooth button once.
- This speaker can only play music on one mobile device at a time. To play from another connected device, pause the device that's currently active first.
- Each time you power on your speaker, it will automatically connect to your last connected device if available within the Bluetooth range. If not, press the Bluetooth button to enter Bluetooth pairing mode.

PartyCast Mode

With the PartyCast feature, you can wirelessly connect up to 100 soundcore speakers for synchronized audio.

1. Press and hold the Bluetooth button on each device for 2 seconds to enter PartyCast pairing mode. The LED indicator on all devices will slowly flash white, indicating that they are all set as primary speakers.
2. Double tap the Bluetooth button on one of the devices to set it as a secondary device. The LED indicator on this device will then flash white rapidly. Repeat this process to set other devices as secondary speakers.
3. Once PartyCast pairing is successful, the LED indicator on the primary speaker will slowly flash white, while the LED indicators on the secondary devices will remain solid white.



	Press and Hold for 2 Seconds	Enter / Exit PartyCast Pairing Mode
	Flashing White	PartyCast Pairing
	Flashing White (Primary Speaker)	PartyCast Connected
	Steady White (Secondary Speaker)	



- Double-press the Bluetooth button on a secondary speaker to make it the primary speaker.

Button Controls

	Press or Press and Hold for 2 Seconds	Power On
	Press and Hold for 2 Seconds	Power Off
	Press	Play / Pause
	Press Twice	Next Track
	Press Three Times	Previous Track
	Press	Answer / End a Call
	Press and Hold for 2 Seconds	Reject a Call
	Press	Enter Bluetooth Pairing Mode
	Press and Hold for 2 Seconds	Enter / Exit PartyCast Pairing Mode
	Press	Volume Up / Down
	Press	Bass On/Off

soundcore App

Download the soundcore app to enhance your experience.



Google Play and the Google Play logo are trademarks of Google Inc.



Apple and the Apple logo are trademarks of Apple Inc.



Product information: Check the product name and software version, or read the user manual.

Firmware update: You will be informed once a new version of firmware is detected when you connect the speaker with the app.

Battery status: Indicates the remaining battery level of your speaker.

Volume control: Adjust the volume level via the app without pressing the buttons on the speaker.

EQ settings: There are various preset EQ settings you can choose from in the app to optimize your experience while enjoying different music genres.

- **soundcore Signature:** Standard EQ mode optimized for well-balanced sound.
- **Voice:** Voices stand out more clearly from other ambient sounds.
- **Treble Boost:** High frequencies are enhanced.
- **Balance:** No enhancement for high-frequency and low-frequency sounds.
- **Custom:** Customize the EQ setting to suit you in the app.
- **BassUp:** Turn on BassUp to enhance the low-frequency sound.

Set Auto-power off time: The speaker will automatically power off when time is up.

Voice prompt: Mute or restore the voice prompt while powering on/off.

Reset

Press and hold the Bluetooth button and volume up button simultaneously for at least 4 seconds to reset the speaker.

Specifications

Specifications are subject to change without notice.

DC Power Input	5V $\overline{\text{---}}$ 2A
Battery Capacity	2400mAh/7.3V
Audio Output Power	16W
Speaker Driver	1.5" Full Range x2
Charging Time	5 Hours
Play Time (varies by volume level and music content)	Up to 20 Hours
Waterproof Level	IPX7
Bluetooth Version	5.0
Bluetooth Range	100m / 328ft

Hereby, Anker Innovations Limited declares that this device is in compliance with The Product Security and Telecommunications Infrastructure (Security Requirements for Relevant Connectable Products) Regulations 2023. For the Statement of Compliance, visit the website:
<https://uk.soundcore.com/pages/psti-related>.

Note: The 'x' of SN Code: xxxxxxxxxxxxxxxx is a variable, see below table.

Variable 'x'	Range of variable	Content
Seventh	0-9 or A-F	Denotes the hardware version which is not effected on the safety compliance.
Eighth	8,9,A,B,C...	Denotes the year, 8 means 2018, 9 means 2019, A means 2020, B means 2021, C means 2022, and so on.
Ninth and tenth	01,02,03...	Denotes weeks, 01 means the first week in this year, 02 means the secondary week in this year, and so on.
Eleventh	1-7	Denotes date, 1 means Monday, 2 means Tuesday..., 7 means Sunday and so on.
The last five	00001-99999	Denotes serial No.

1. Power consumption in standby mode: $\leq 0.5W$

2. Power management: $\leq 20min$

3. Information of applicable adapter:

Brand: ANKER

Manufacturer: Anker Innovations Limited

Model: A2337

Input: 100-240V~ 1.0A, 50-60Hz

Output: 5.0V \rightleftharpoons 3.0A 15.0W / 9.0V \rightleftharpoons 3.0A 27.0W / 12.0V \rightleftharpoons 2.5A 30.0W / 15.0V \rightleftharpoons 2.0A 30.0W / 20.0V \rightleftharpoons 1.5A 30.0W (30.0W Max)

Default Open Port: Classic Bluetooth

Port Description: After the device is powered on, Classic Bluetooth visibility (or pairing mode) is automatically enabled, providing Bluetooth pairing (or control) services. The Bluetooth service is disabled when the device is powered off.