

APP



Google Play and the Google Play logo are trademarks of Google Inc.



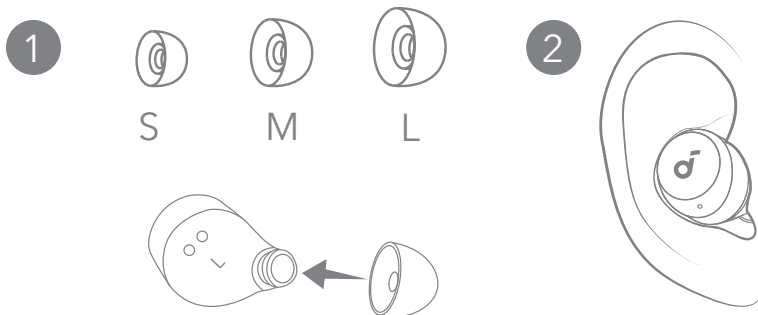
Apple and the Apple logo are trademarks of Apple Inc.



Download the soundcore app to enhance your experience (Gaming mode, Find device, EQ tuning, Firmware update, and more).

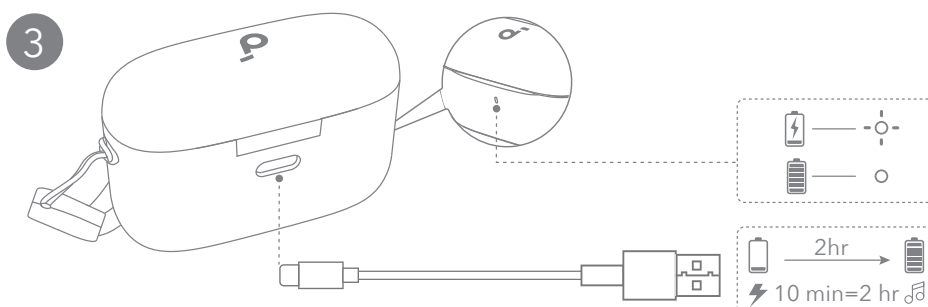
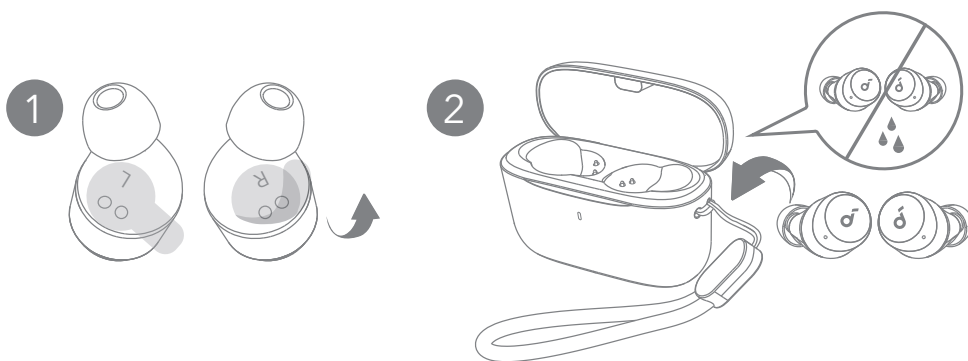
If your earbuds cannot connect with the soundcore app, update it to the latest version in your mobile app store.

WEARING



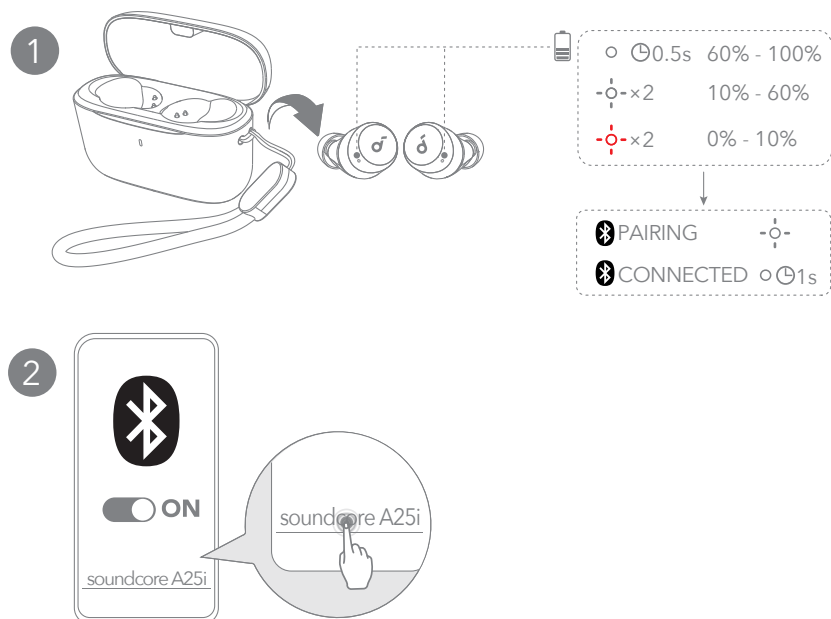
Choose the ear tips that fit your ears best.

CHARGING



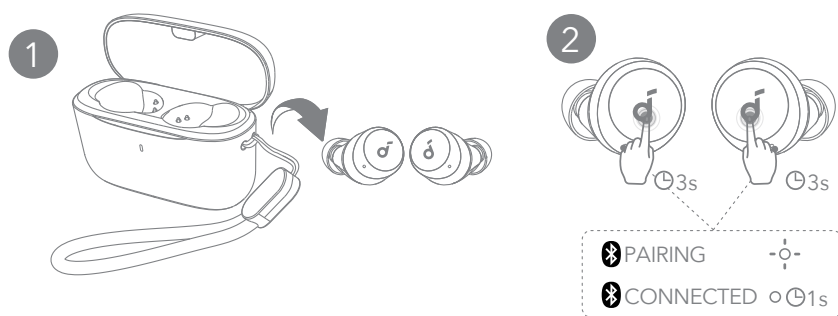
1. Tear off the insulation sticker on the earbuds before first use.
2. Place the earbuds in the charging case and close it.
 - Fully dry off the earbuds and the USB-C charging port before charging.
3. Connect the charging case to a power supply by using a certified USB-C charging cable.
 - Fully charge both the earbuds and the charging case before first use.

POWERING ON & PAIRING



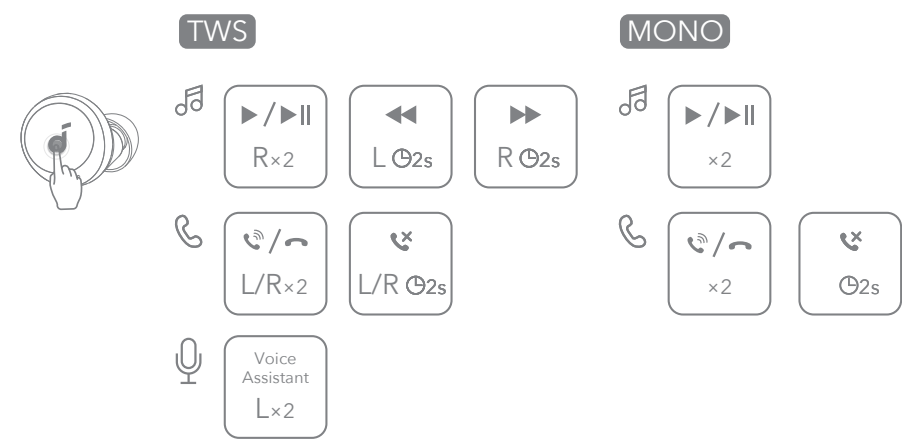
1. Open the charging case and take the earbuds out. They will automatically power on and enter Bluetooth pairing mode.
2. Select "**soundcore A20i / A25i**" * on your device's Bluetooth list when connecting for the first time.
 - * The device name may vary depending on the region.

MANUAL PAIRING



To manually enter Bluetooth pairing mode, take the earbuds out of the case, then tap and hold the touchpads on both earbuds for 3 seconds until the earbuds' LED indicators flash white rapidly.

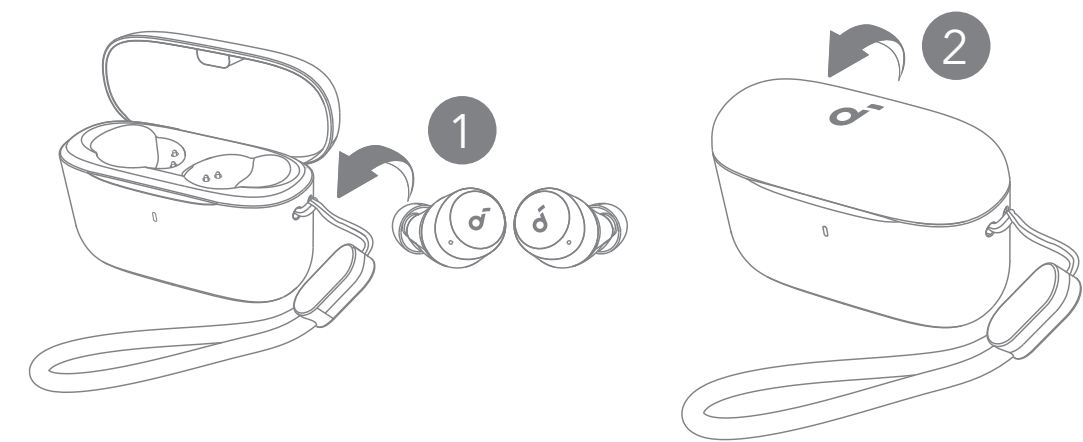
CONTROLS



You can also customize controls in the soundcore app.

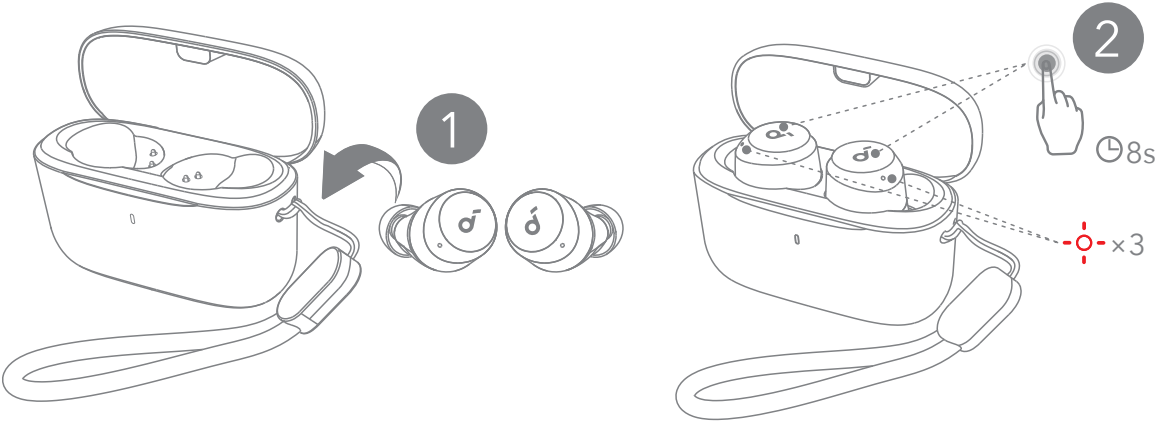
		TWS mode	Mono mode
	Play / Pause	Tap twice (R)	Tap twice
	Previous track	Tap and hold for 2 seconds (L)	/
	Next track	Tap and hold for 2 seconds (R)	/
	Answer / End a call	Tap twice (L/R)	Tap twice
	Reject a call	Tap and hold for 2 seconds (L/R)	Tap and hold for 2 seconds
	Activate voice assistant software	Tap twice (L)	/

POWERING OFF



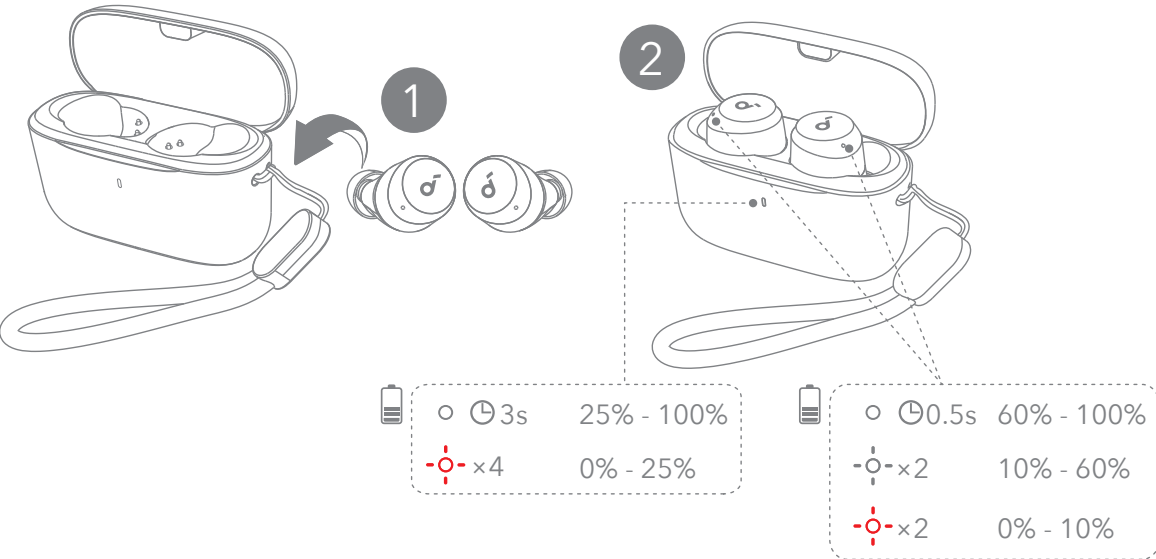
To power off, return the earbuds to the charging case and close it.
The earbuds will automatically power off after 30 minutes if they are not connected.

RESET



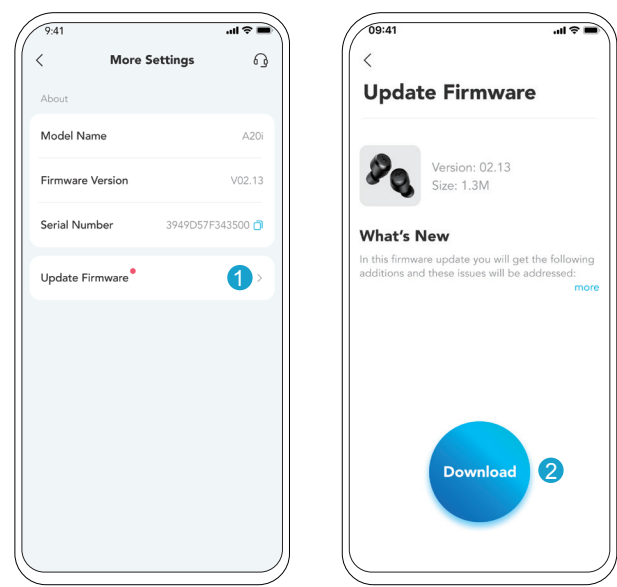
Reset if the earbuds have issues pairing with each other or with other devices. Place the earbuds in the charging case and leave the case open, then tap and hold the touchpads on both earbuds for 8 seconds until the earbuds' LED indicators flash red rapidly three times.

LED LIGHT GUIDE



○	Steady white
-○-	Flashing white
-○-	Flashing red

FIRMWARE UPDATE



You will be notified once a new firmware version is detected when you connect the earbuds to the app. Ensure the earbuds are placed in the charging case and the case remains open until the firmware update is complete. During the update, make sure the earbuds are being charged and avoid any usage.

SPECS

Specifications are subject to change without notice.

Input	5V --- 0.5A
Rated output power	5mW
Battery capacity	60mAh × 2 (earbuds); 350mAh (charging case)
Charging time	Up to 2 hours
Playtime (varies by volume level and content)	Up to 9 hours (up to 28 hours with the charging case)
Driver unit	6mm dynamic driver
Frequency response	20Hz - 20KHz
Impedance	16Ω
Waterproof level (earbuds)	IPX5
Bluetooth version	Bluetooth 5.3
Bluetooth range	10m / 33ft

Customer Service



service@soundcore.com
support.mea@soundcore.com (For Middle East and Africa Only)
support@anker.com (日本)
support.kr@anker.com



+1 (800) 988 7973 (US/Canada)
+44 (0) 1604 936200 (UK)
+49 (0) 69 9579 7960 (DE)
03 4455 7823 (日本)
+86 400 0550 036 (中国)
+82 1666-8470 (한국)
+971 8000320817 (UAE)
+966 8008500030 (KSA)
+965 22069086 (Kuwait)
+20 8000000826 (Egypt)
+61 3 8331 4800 (Australia)
+90 (850) 460 14 14 (Türkiye)
+8 (800) 511-86-23 (Russia)
000-8000-504-414 (India)

Note: The 'x' of SN Code: xxxxxxxxxxxxxxxx is a variable, see below table.

Variable 'x'	Range of variable	Content
Eighth	0-9 or A-F	Denotes the hardware version which is not effected on the safety compliance.
Ninth	8,9,A,B,C...	Denotes the year, 8 means 2018, 9 means 2019, A means 2020, B means 2021, C means 2022, and so on.
Tenth and Eleventh	01,02,03...	Denotes weeks, 01 means the first week in this year, 02 means the secondary week in this year, and so on.
Twelfth	1-7	Denotes date, 1 means Monday, 2 means Tuesday..., 7 means Sunday and so on.
The last five	00001-99999	Denotes serial No.

Hereby, Anker Innovations Limited declares that this device is in compliance with The Product Security and Telecommunications Infrastructure (Security Requirements for Relevant Connectable Products) Regulations 2023. For the Statement of Compliance, visit the website: <https://uk.soundcore.com/pages/psti-related>.

1. Power consumption in standby mode: $\leq 0.5W$
2. Powermanagement: $\leq 20min$
3. Information of applicable adapter:
Brand: ANKER
Manufacturer: Anker Innovations Limited
Model: A2337
Input: 100-240Vac, 1A, 50-60Hz
Output: 5V \dashv 3A / 9V \dashv 3A / 12V \dashv 2.5A / 15V \dashv 2A / 20V \dashv 1.5A (30W Max)