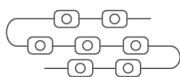


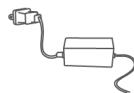
# What's in the Box

Contact [support@eufy.com](mailto:support@eufy.com) if anything is missing.

## Light Strings & Accessories



Light Strings  
(with Mounting Brackets)



Power Adapter



Controller (with Amplifier)



Spare Mounting Brackets



Positioning Cards

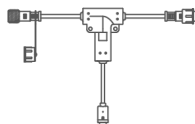


Screws

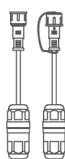
## Radar Motion Sensor & Accessories



Radar Motion Sensor



3-Way Connector



Male & Female Splicers



Silicone Sealant




Radar Angle  
Adjusting Card




Screws & Anchors


Extension Cables & Accessories



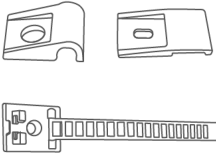
Extension Cable  
(Controller)



Extension Cable  
4 ft (1.2 m)



Extension Cable  
12 ft (3.6 m)



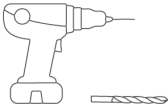
Cable Clips & Ties

Other



Quick Start Guide

Tools You Will Need (Not Provided)




Power Drill  
Drill Bit: 15/64 in (6 mm)



Hammer




Ladder




Marker



Phillips Screwdriver



Wire Stripper

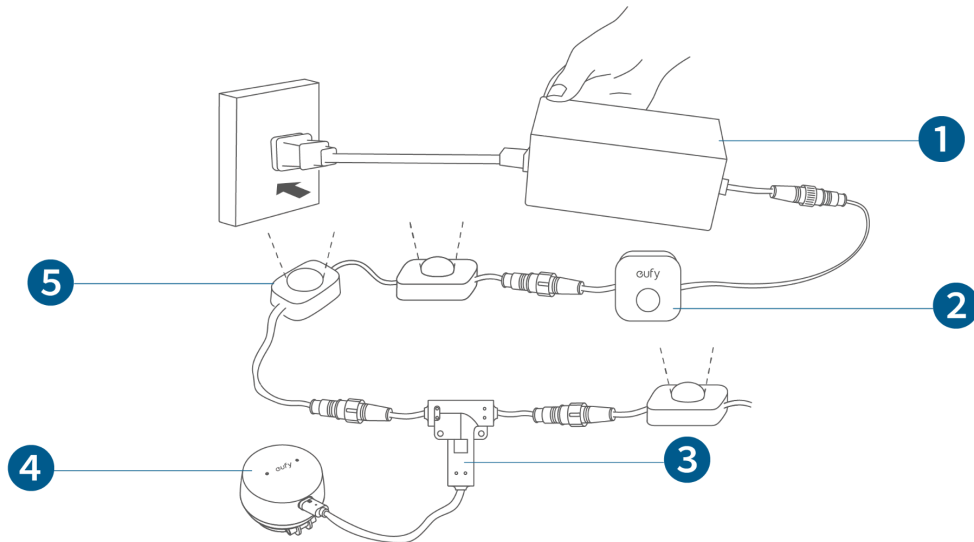


Cleaning Cloth



Scissors

# At a Glance



1. Power Adapter
2. Controller
3. 3-way Connector
4. Radar Motion Sensor
5. Light Strings

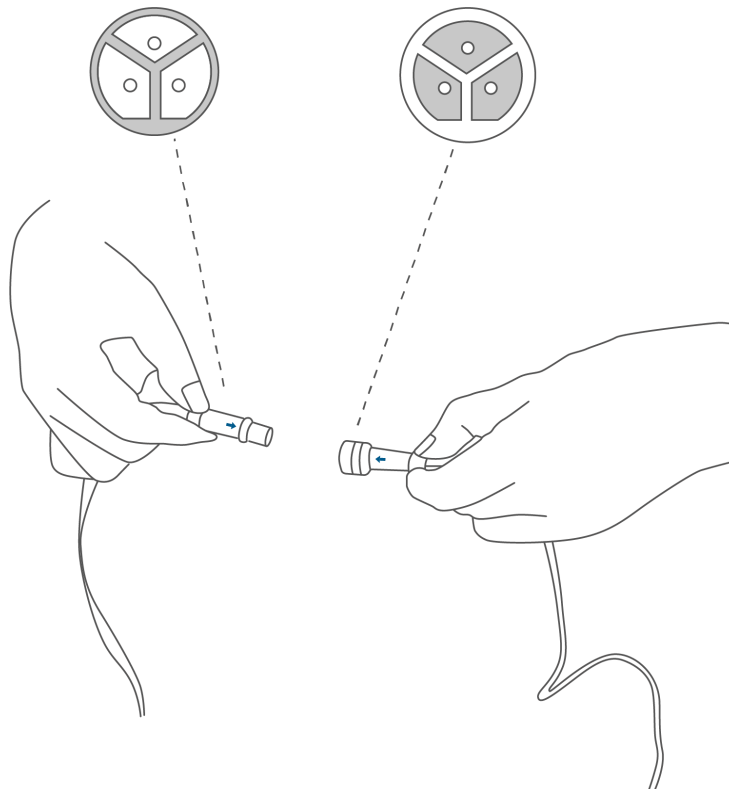
## Before Installation

💡 Connect the light strings with the adapter unplugged. If you connect the light strings while the adapter is plugged, the strings may not light up.

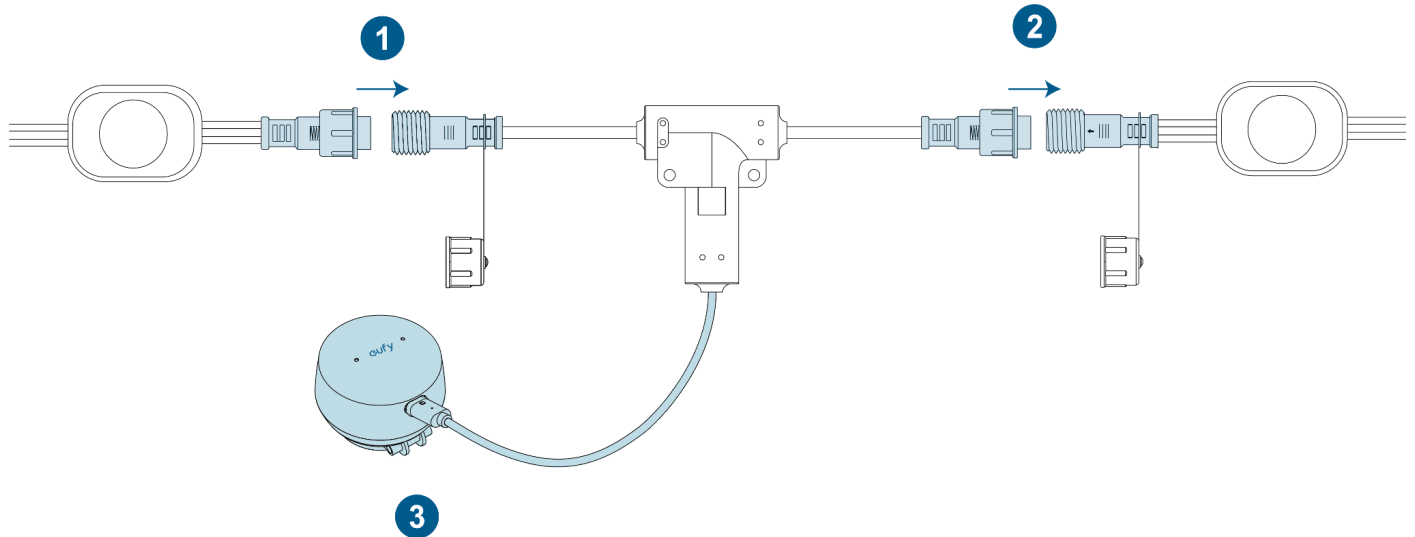
💡 A maximum of 9 light strings can be connected to the power adapter.

### 1. Connect Light Strings and Radar Motion Sensor

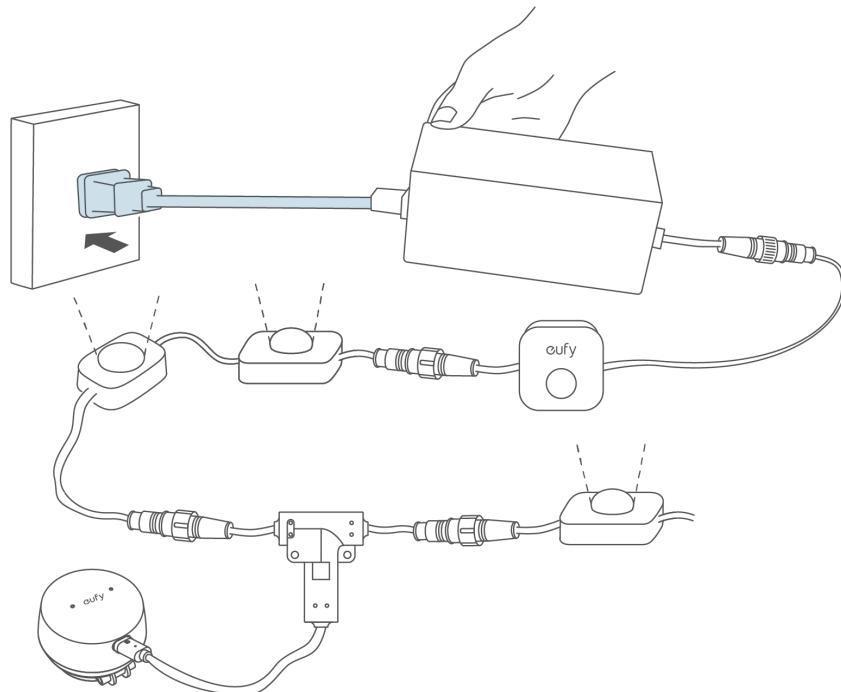
1. Connect the controller and the power adapter and all the light strings together.
  - Make sure the pin connections are correct.
  - Do NOT twist the connector; otherwise, the pins may be damaged.



2. Use the 3-way connector to connect the Radar Sensor between the light strings.



3. Plug in the power supply, and check if all lights light up.



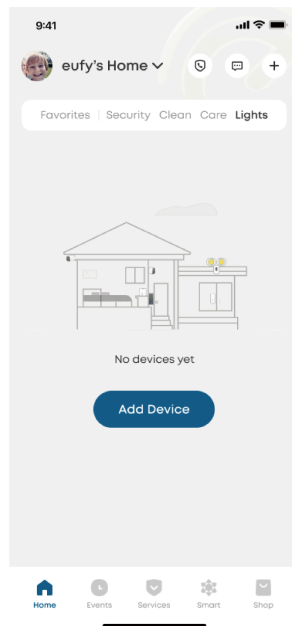
## 2. Add Light Strings and Radar Motion Sensor in the App

1. Download and install the eufy app, then sign in or create an account.

💡 Make sure your app is updated to the latest version.



2. Select **Add Device** or **+** on the home screen, then go to **Lights** > **Permanent Outdoor Lights** > **Permanent Outdoor Lights S4**, and follow on-screen prompts to add the light strings.
3. Select **Add Device** or **+** on the home screen, then go to **Lights** > **Radar Motion Sensor**, and follow on-screen prompts to add the radar motion sensor.



### 3. Test the Light Strings and Radar Motion Sensor

Go to the **Test** tab and test if each light string is working properly.

- If some of the light strings do not light up, unplug and reconnect the power adapter. Make sure the light strings are working properly before proceeding to the next step.
- Contact [support@eufy.com](mailto:support@eufy.com) if any lighting and color errors occur.

## Install Your Outdoor Lights

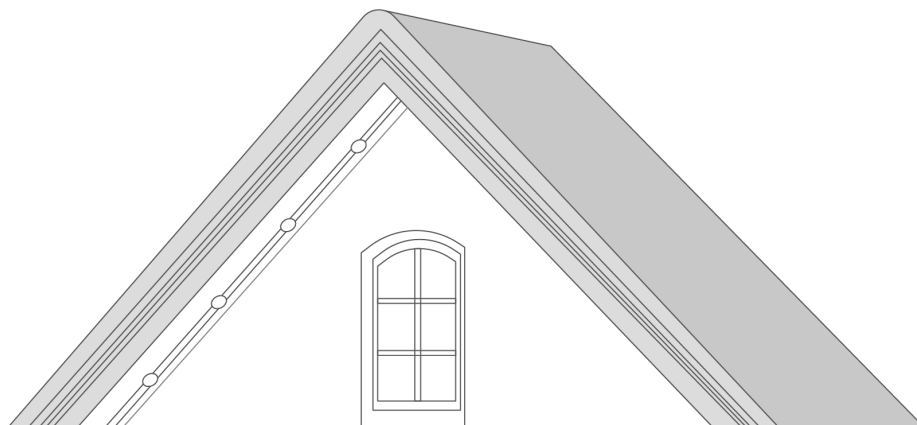
- 💡 Do not mix with any other products.
- 💡 One power adapter supports light strings up to 200 ft. Performance may be affected if exceeding this range.

The installation will take approximately 1-2 hours and may vary depending on the home type.

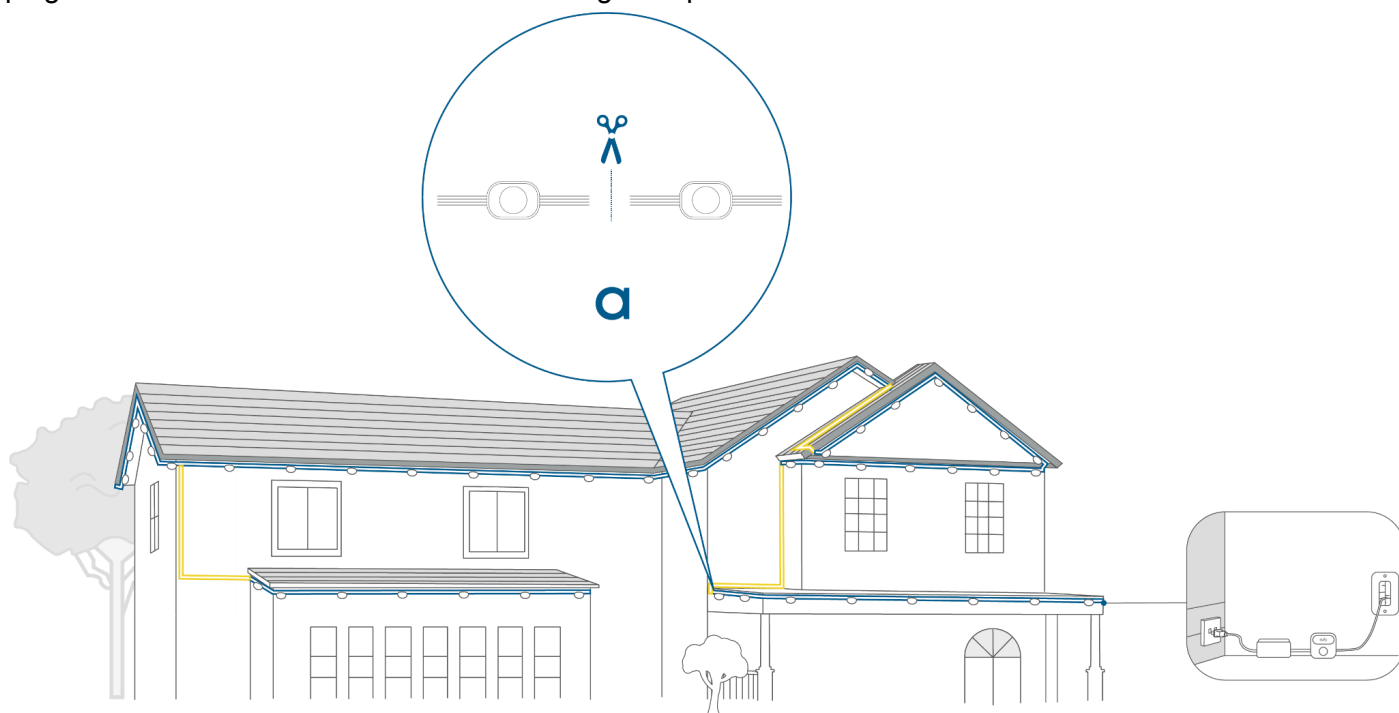
### 1. Plan Your Layout

- 💡 Do not install on rainy or hot days to avoid falling due to extreme temperatures or a slippery ladder.
- 💡 You will need a ladder and make sure it is stable enough or use it with the help of another person.

Plan your lighting layout before installing. Install the light strings beneath the eaves to generate a wall-washing effect.



Determine the location of the first light string section, making sure that the power adapter is close enough to plug in and the control unit is accessible enough to operate.



**a.** The light strings can be cut to fit your house. Refer to the *Trimming Your Lights* section.

**b.** Use extension cables when installing the lights across different roofs.

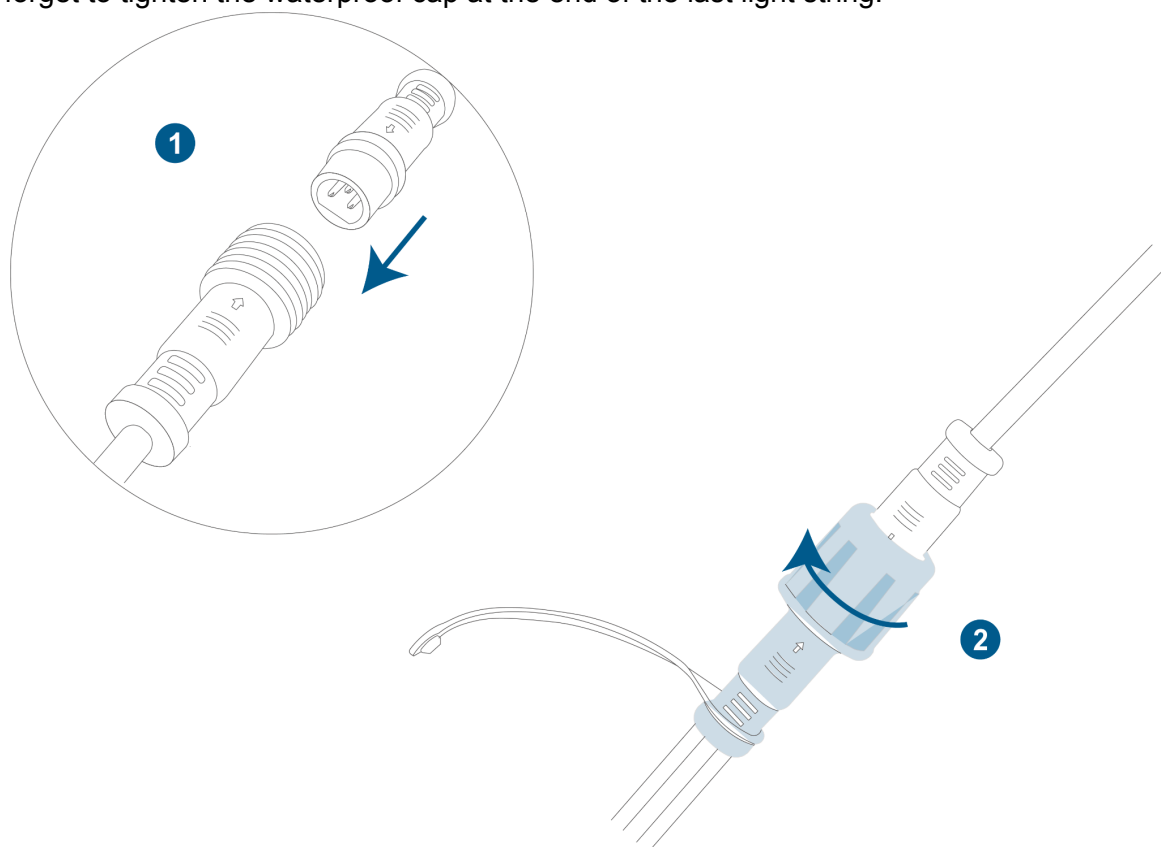
## 2. Install Light Strings

**1** Align the male connector with the female connector, and connect them.

**2** Tighten the waterproof cap to secure the connection.

💡 Do NOT twist the connector; otherwise, the pins may be damaged.

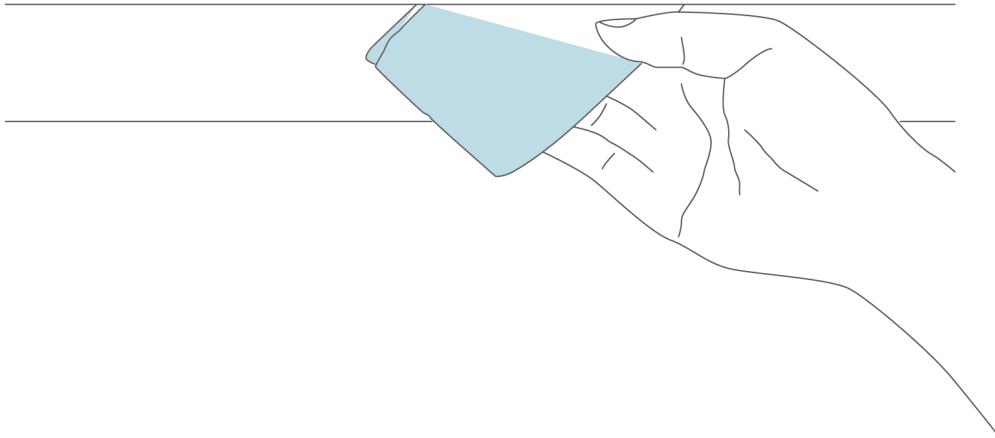
💡 Don't forget to tighten the waterproof cap at the end of the last light string!



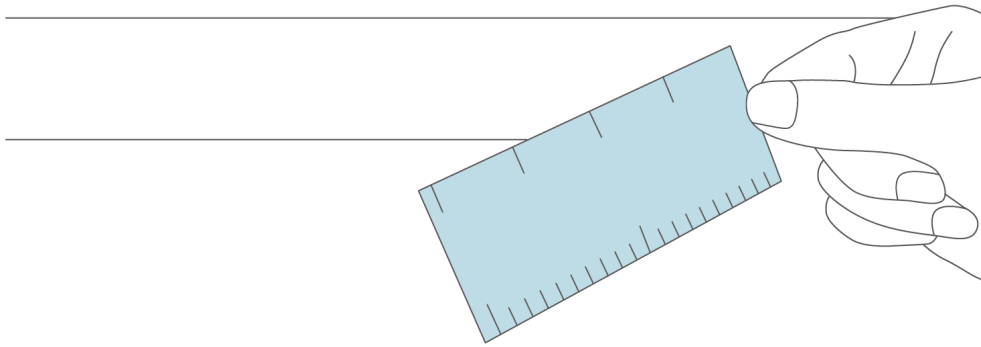
**Option 1: Secure with 3M Adhesive - For Smooth Surfaces (steel, marble, glass, etc.)**

1. Clean the surface with a cloth or tissue and wait until the surface is completely dry before installing.

- Dust residue may affect the adhesion of 3M adhesive.
- If there is any oil or dirt on the surface, clean it with alcohol before installation.

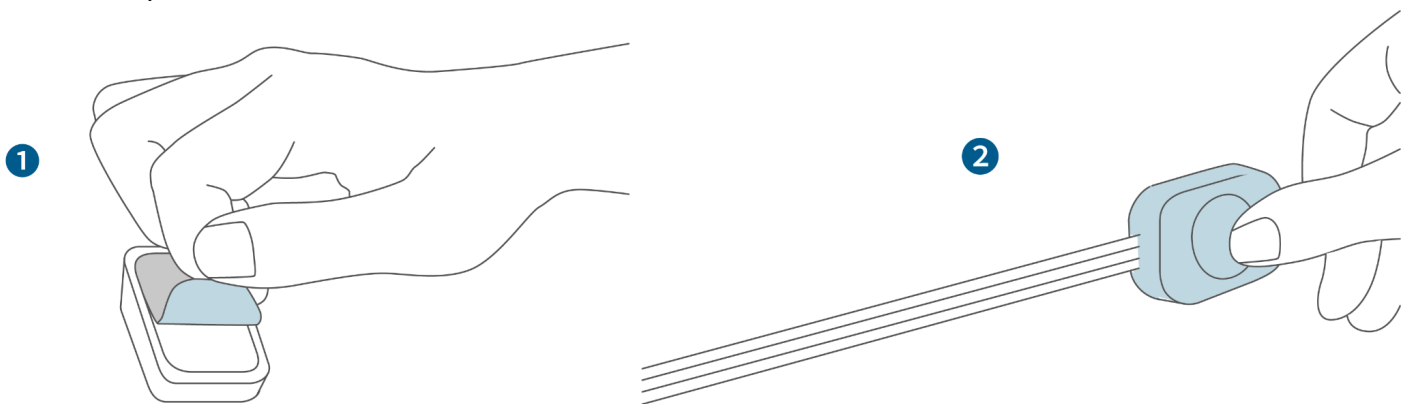


2. For the best wall-washing effect, the light string should be installed 2-4 inches (5-10 cm) away from the wall surface. Use the provided positioning card for measurement.



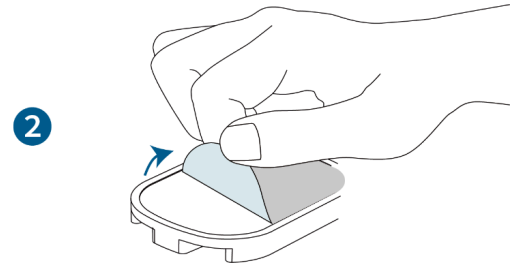
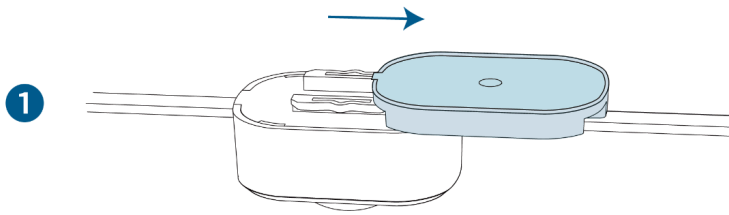
3. Peel the release paper off the back of each light, then firmly press the light against the surface for at least 10 seconds.

- Do not overstretch the wires between lights and allow for flexibility in installation.
- When installing at temperatures below  $-10^{\circ}\text{C}$  ( $14^{\circ}\text{F}$ ), heat the adhesive backing on the mounting brackets to ensure optimal adhesion.



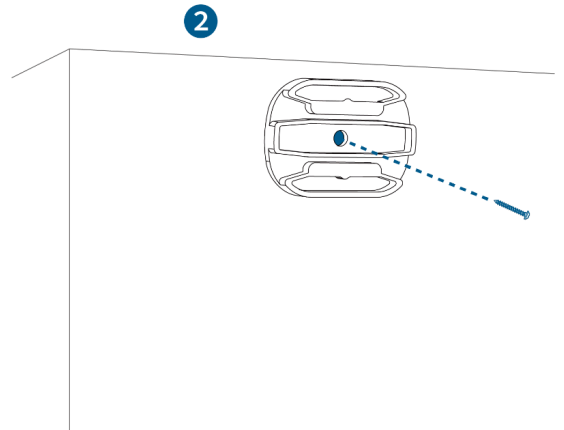
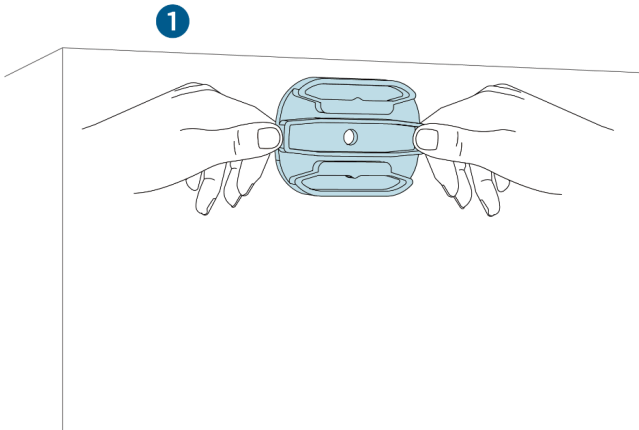
## Option 2: Secure with Screws - For Uneven Surfaces

1. Slide to remove the mounting bracket from the back of each light, peel the release paper off and press the light against the surface.

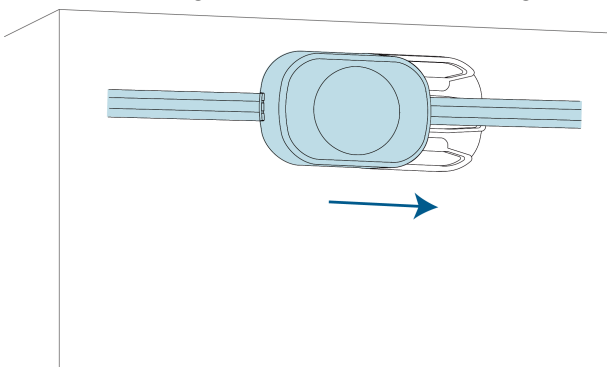


2. Drill pilot holes on hard surfaces (concrete, stucco, stone, etc.) and insert anchors, and secure each bracket with a screw.

• Contact [support@eufy.com](mailto:support@eufy.com) if you need anchors.



3. Slide each light back into the mounting bracket.



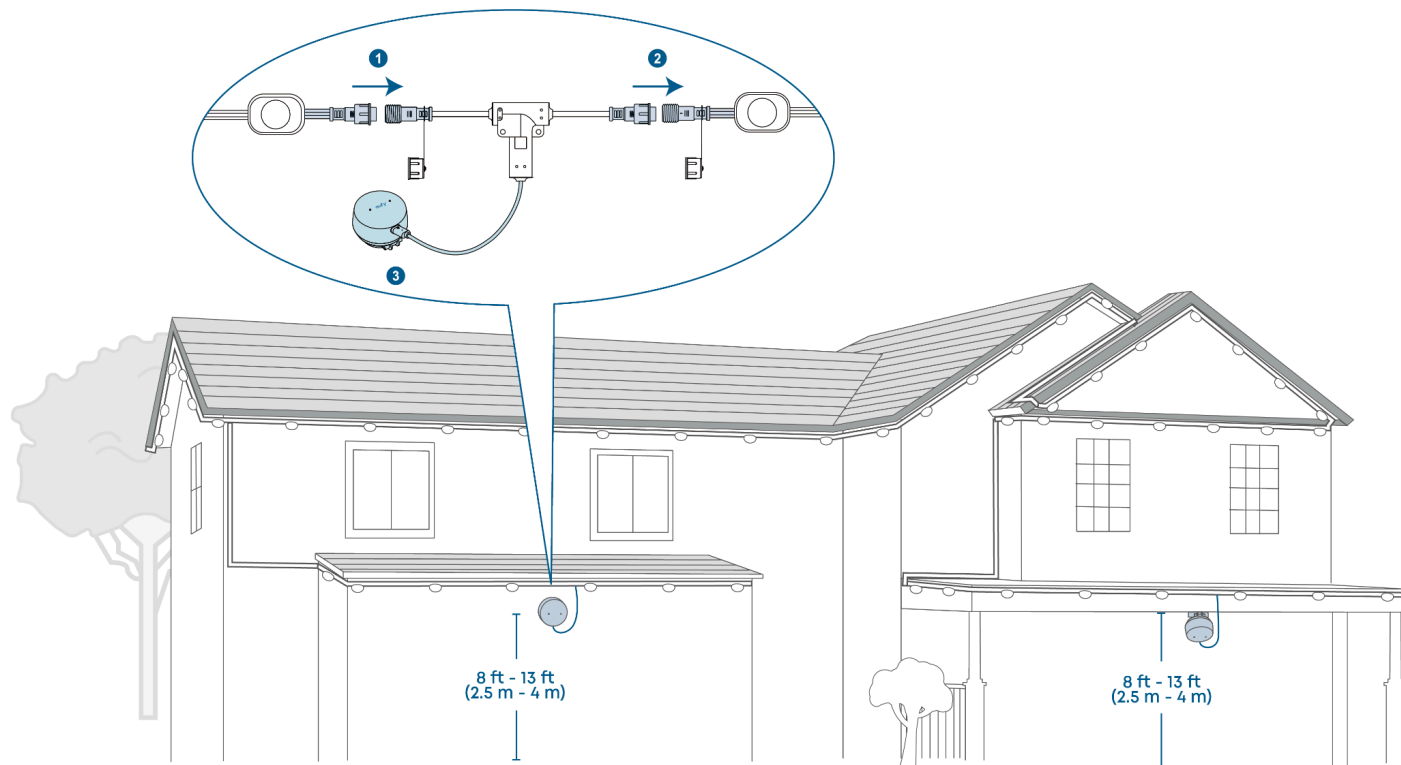


# Install the Radar Motion Sensor

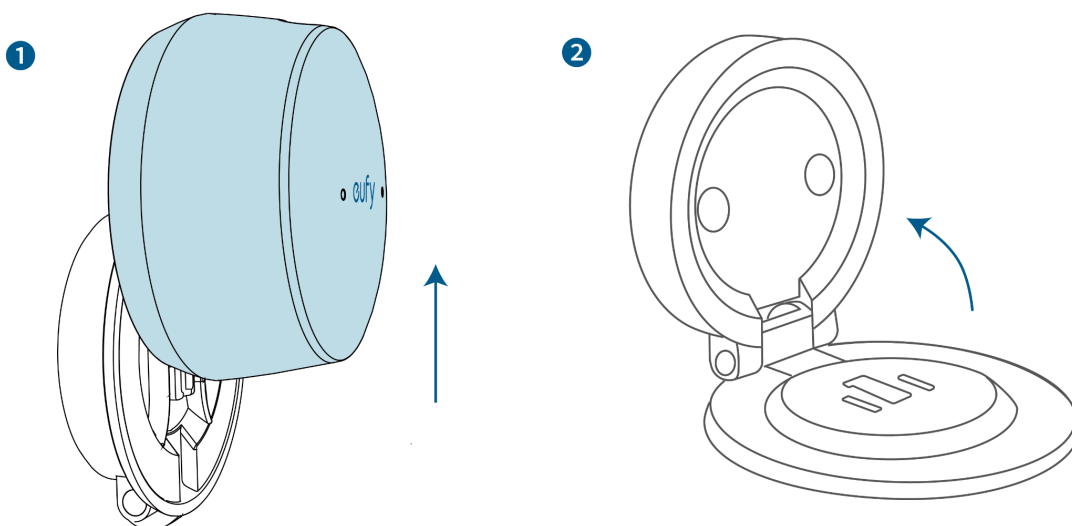
You can install the sensor between the 2 light strings, or cut the light string and install the sensor to any other positions you prefer. Refer to the [Trimming Your Lights](#) section.

Recommended Location:

- House entrance
- Height of 8 ft to 13 ft (2.5 m to 4 m)
- On the wall or under the eave

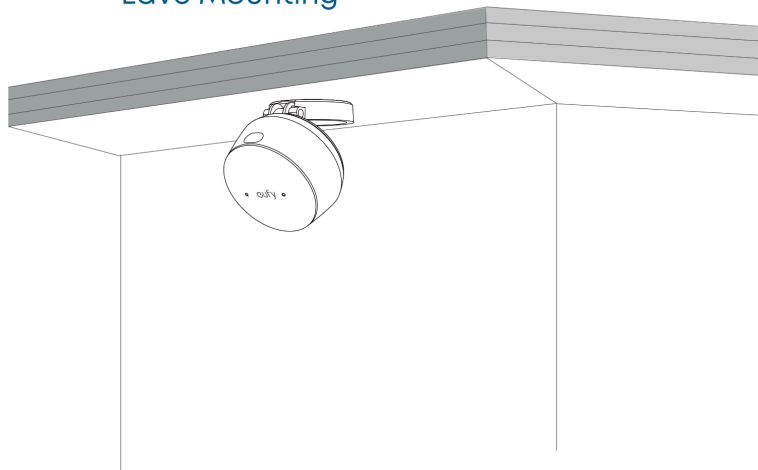


1. Remove the bracket from the sensor, and open the bracket.

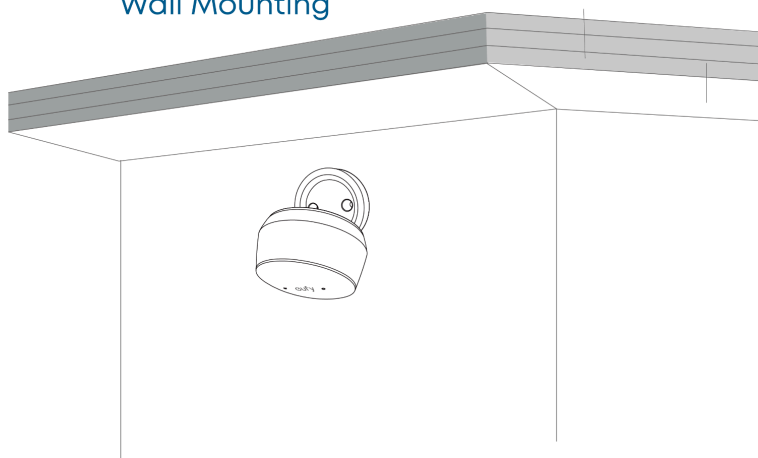


2. Choose a mounting position.

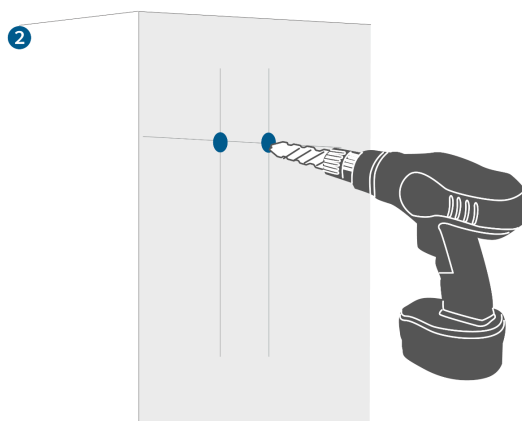
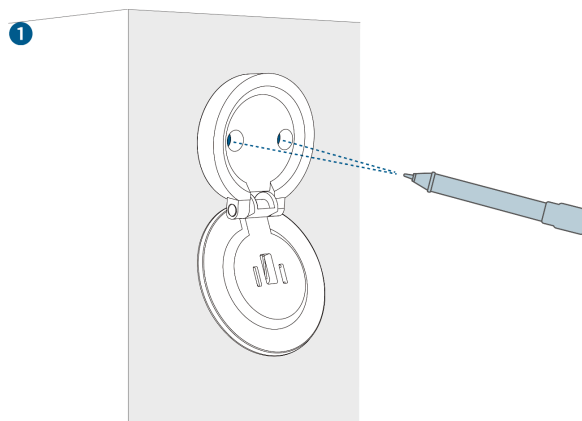
Eave Mounting



Wall Mounting

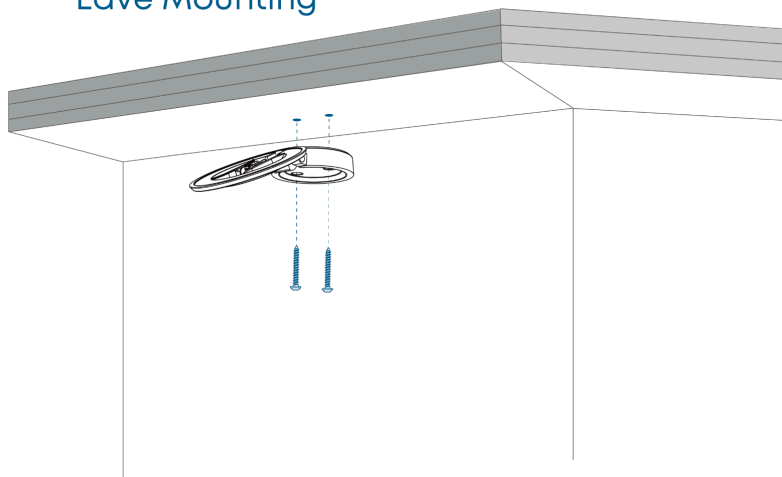


3. Position and drill screw holes for the radar bracket.

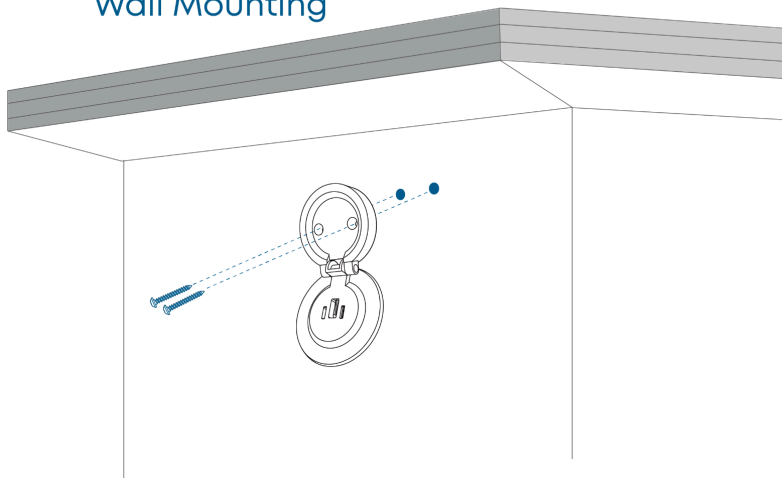


4. Mount the bracket.

Eave Mounting

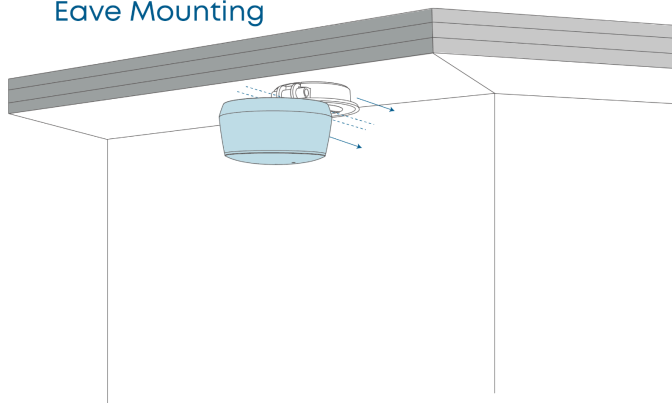


Wall Mounting

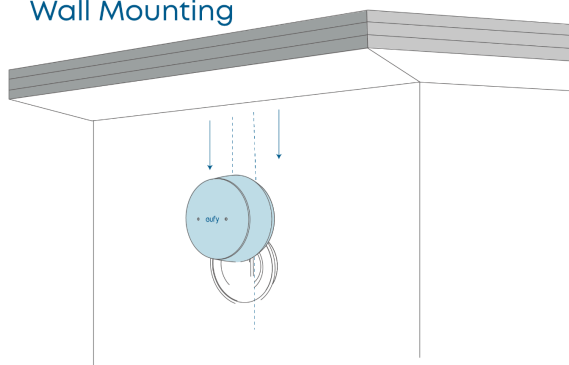


5. Install the sensor to the bracket.

Eave Mounting

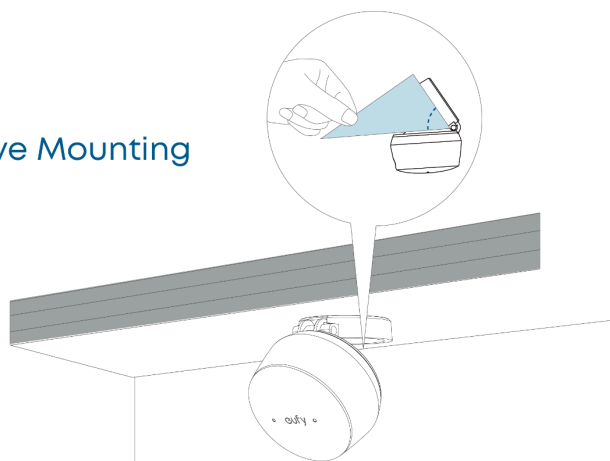


Wall Mounting

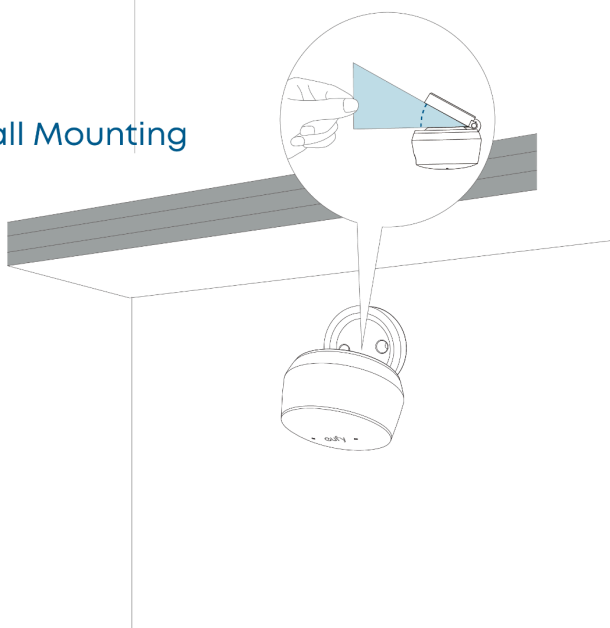


6. Use the positioning card to adjust the radar motion sensor to the optimal angle.

Eave Mounting



Wall Mounting

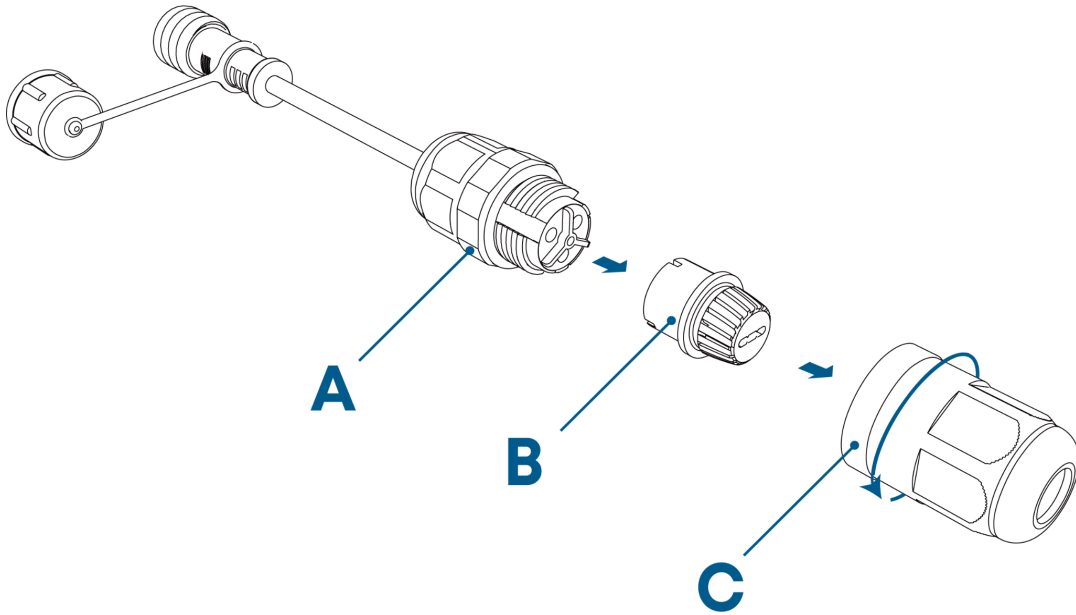


# Trimming Your Light Strings (Optional)

You can trim your light string with a wire stripper (not provided).

## 1. Take Apart Your Wire Splicer

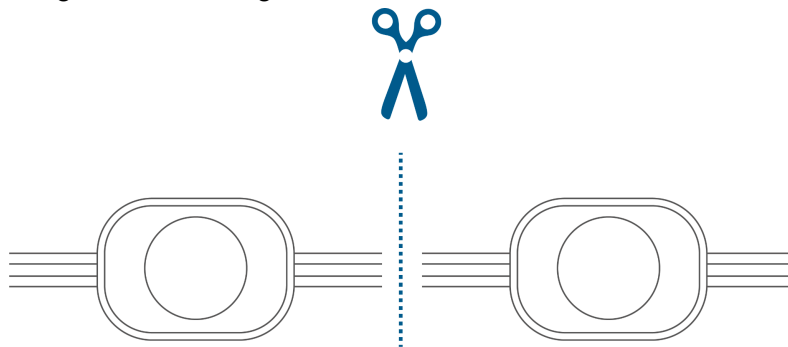
⚠ Do NOT strip the wire skin before you run the light string through **Parts B** and **C** of the wire splicer.



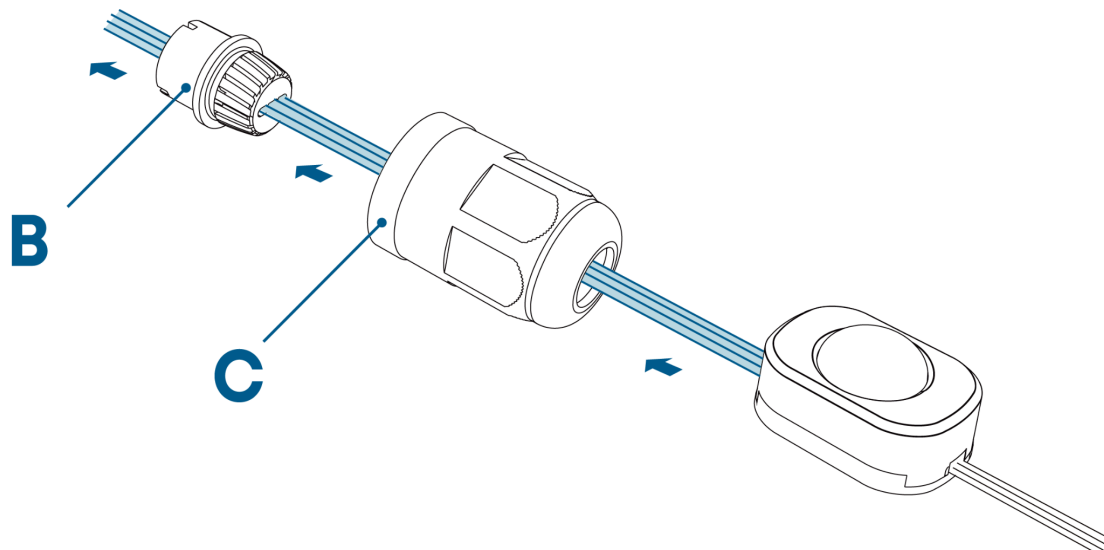
## 2. Cut Your Light String

Use a wire stripper to cut the light string from the middle of two lights.

⚠ Power off the light strings before cutting!

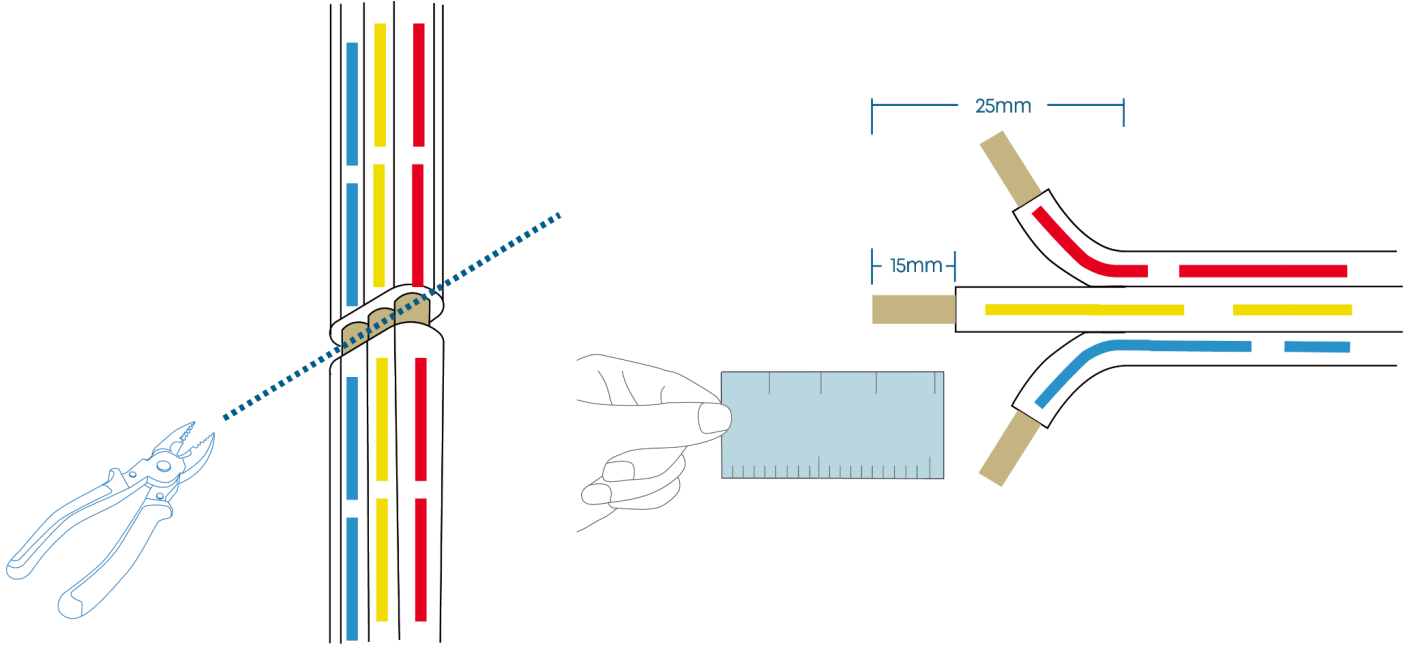


## 3. Run the cut light string through the wire splicer **Part C** first, then **Part B**.



#### 4. Reveal Insulated Wires

- Separate at least 25 mm of insulated wires.
- Expose at least 15 mm of copper wiring.



5. Connect the wire splicer to the cut light string.

- If reconnecting to a **female** end, use the **male** wire splicer.
- If reconnecting to a **male** end, use the **female** wire splicer.

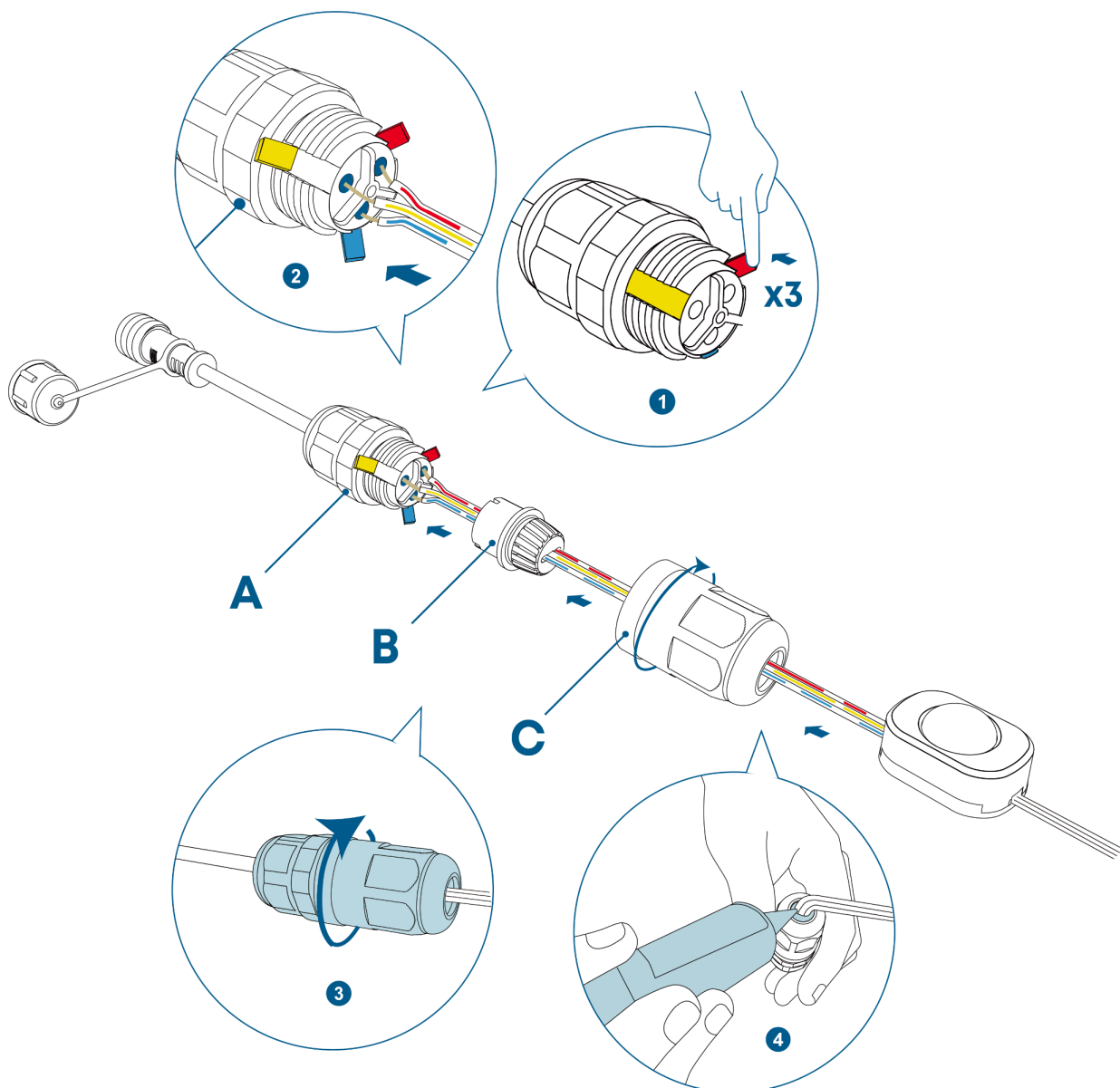
❶ Pull up the lever.

❷ Twist the wires into a single strand, and insert them into the connectors according to their colors. Push down the lever.

❸ Screw **Part C** to **Part A** tightly to ensure optimal waterproofing.

❹ Fill the locking nut (Part C) with the provided silicone sealant to waterproof the splicer.

⚠ The wire color must match the color on the connector. Mismatched wiring will cause a short circuit.



6. Connect to the next light string.

