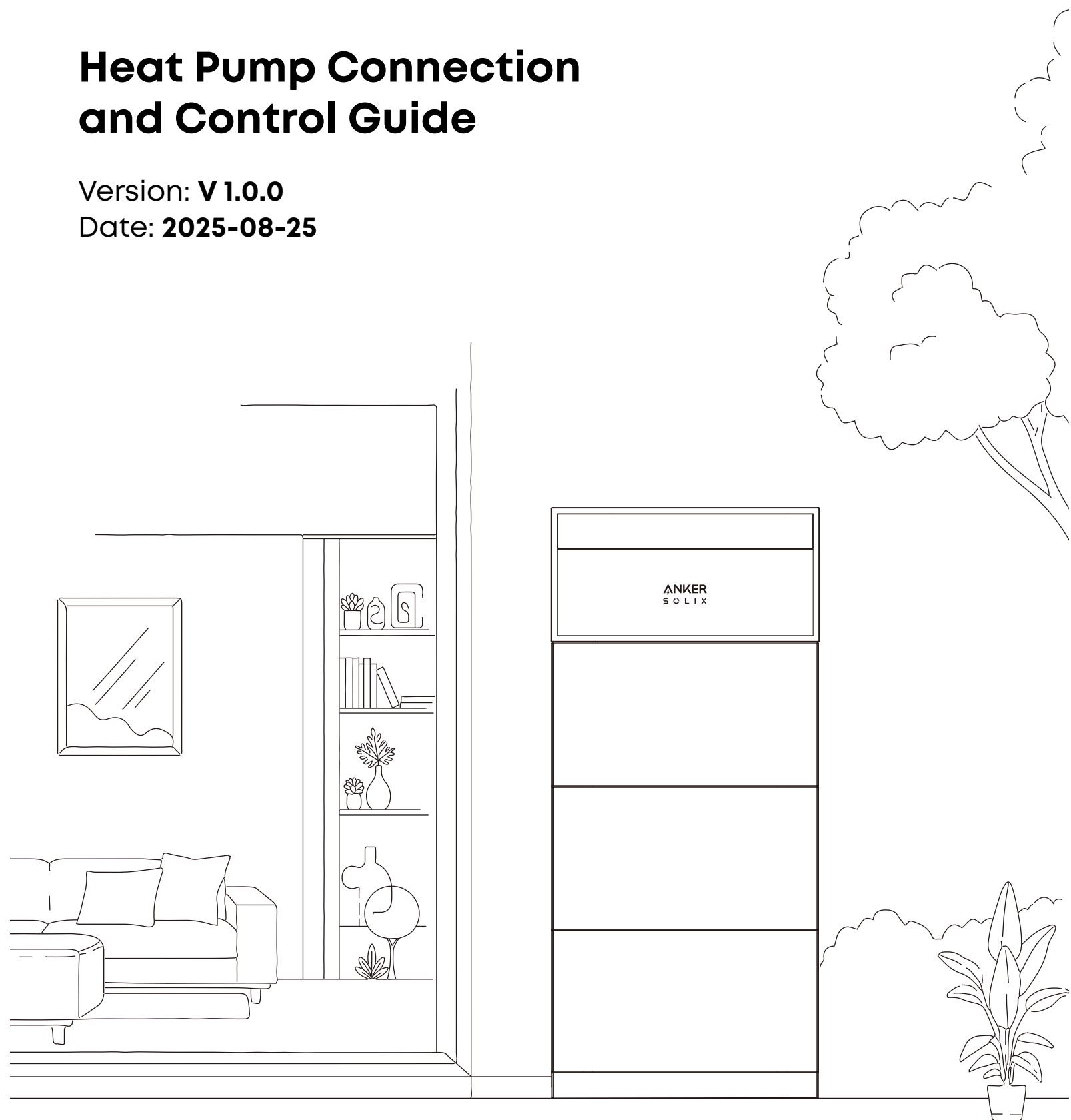


Heat Pump Connection and Control Guide

Version: **V 1.0.0**

Date: **2025-08-25**



**© 2025 Anker Innovations Ltd.
All rights reserved.**

No part of this document may be reproduced or transmitted in any form or by any means without prior written consent of Anker Innovations Ltd.

Trademarks and Permissions

Anker Solix and Anker are trademarks of Anker Innovations Ltd. and/or its affiliates.

All other trademarks and trade names mentioned in this document are the property of their respective holders.

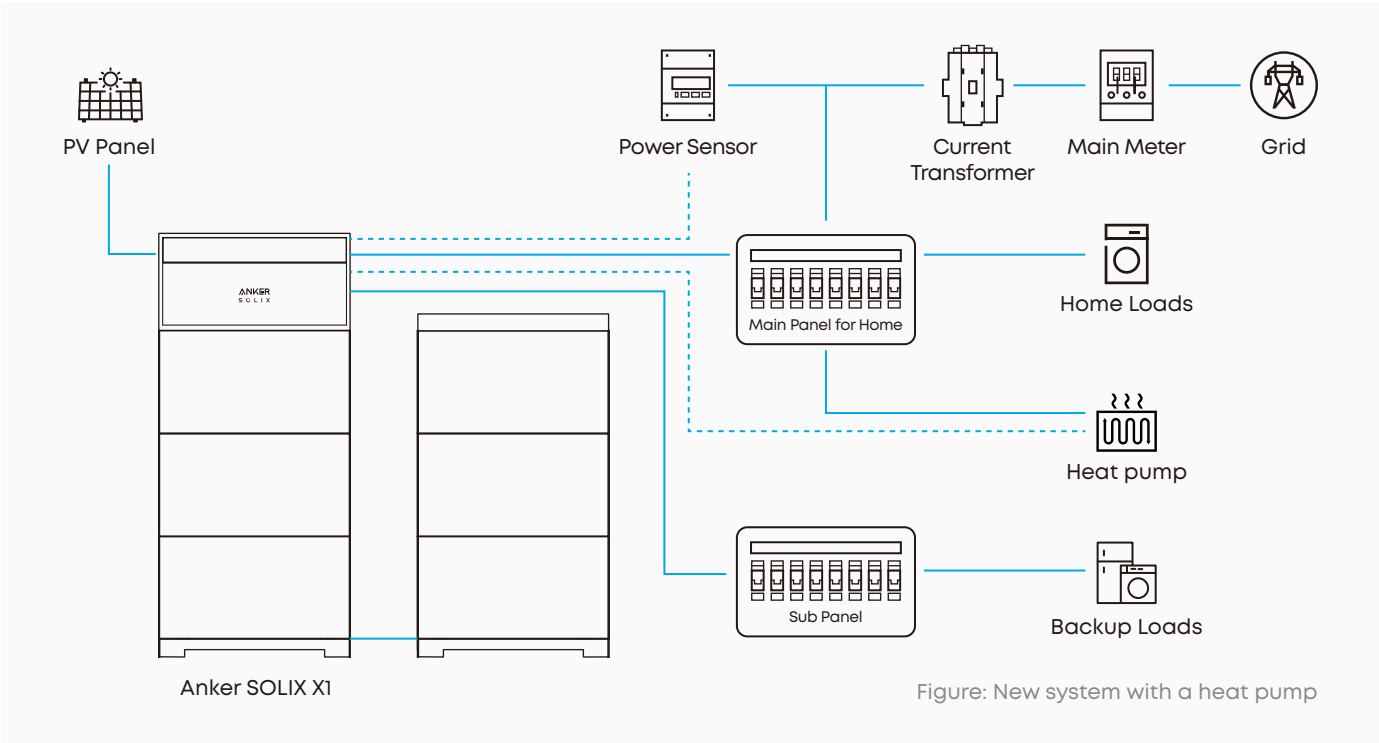
HEAT PUMP CONNECTION AND CONTROL GUIDE

System Overview

The Anker SOLIX X1 Power Module can integrate a heat pump with solar and storage setups, converting excess solar energy into thermal energy. A compatible heat pump should have an SG (Smart Grid) ready control input. Connect your SG-ready heat pump to a power module with the following models.

Compatible Device	Supported Model
Anker SOLIX X1 Power Module	<p>Hybrid Single-Phase Models: X1-H3.68K-S, X1-H4.6K-S, X1-H5K-S, X1-H6K-S</p> <p>Hybrid Three-Phase Models: X1-H5K-T, X1-H8K-T, X1-H10K-T, X1-H12K-T</p>

The following diagrams illustrate energy storage systems incorporating hybrid three-phase and single-phase models and heat pumps.



COMMUNICATION CONNECTION



Before connecting cables, ensure the BAT switch and the PV switch on the power module are set to OFF.

Step 1: Preparing Cables

Prepare the cables along with the tube terminals and terminal block connectors as specified below.

Terminal	Cable	Strip Length	Tube Terminal	Terminal Block Connector	Maximum Length
NO2	Recommended: 0.63 mm² (22 AWG), not included	10mm	For 0.63 mm² (22 AWG) cables, included	3-pin, included	20m
COM2	*Optional: 0.52 mm² (24 AWG), not included				

Step 2: Identify Terminals

Check the heat pump manual to determine which terminals control mode switching. They should enable the heat pump to switch between Operating Modes 2 and 3.

SG-Ready Heat Pump	
Operating Mode 2	The heat pump operates in standard mode.
Operating Mode 3	The heat pump operates in a mode that boosts the heating temperature.

Step 3: Connect Cables

Connect the NO2 and COM2 terminals on the power module to the EVU terminals on the heat pump.

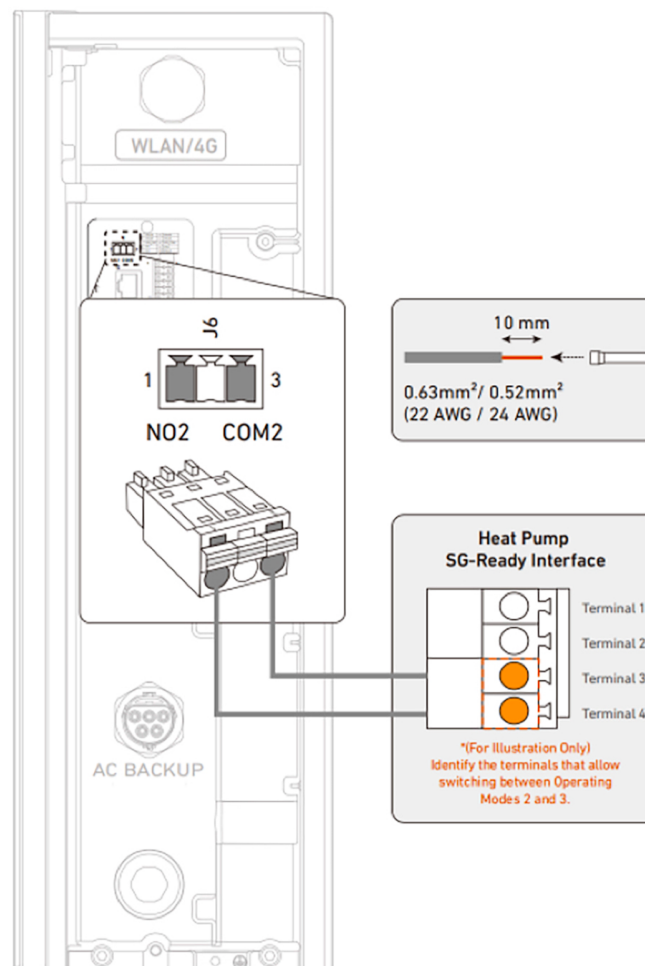


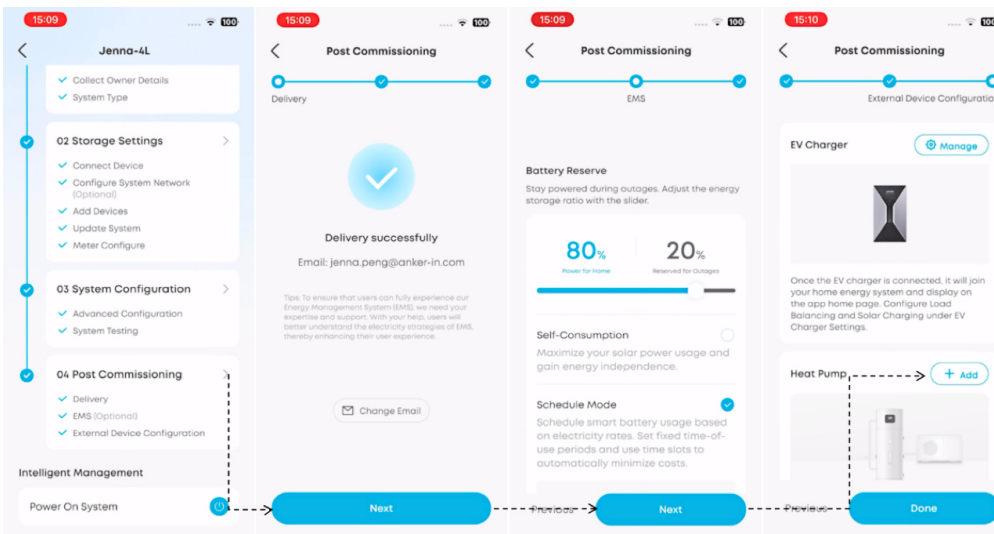
Figure: Connect to the heat pump using the Terminal 3&4 interface.

DEVICE SETUP IN APP

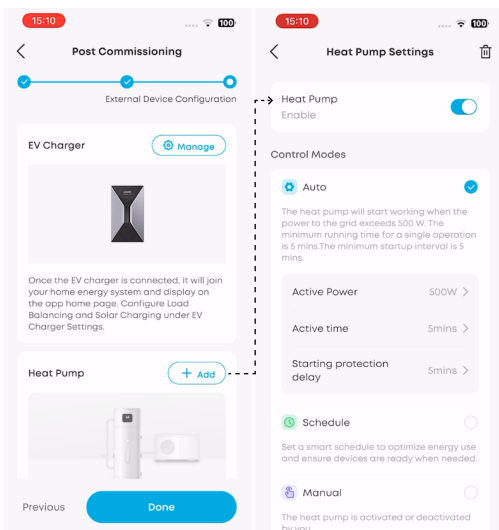
Once the electrical connections are completed, the heat pump must be configured either by the installer using the Anker SOLIX Professional app or by the user using the Anker app.

Option 1: Using the Anker SOLIX Professional App (Installer)

1. Add the heat pump to the system.



2. Enable the heat pump function.



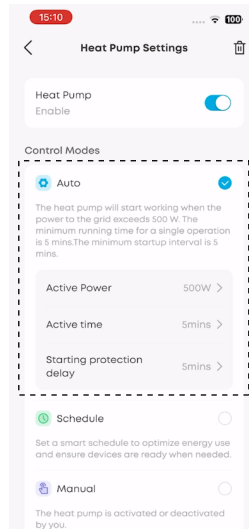
3. Select a control mode from the options below.

Control Modes

Auto Mode:

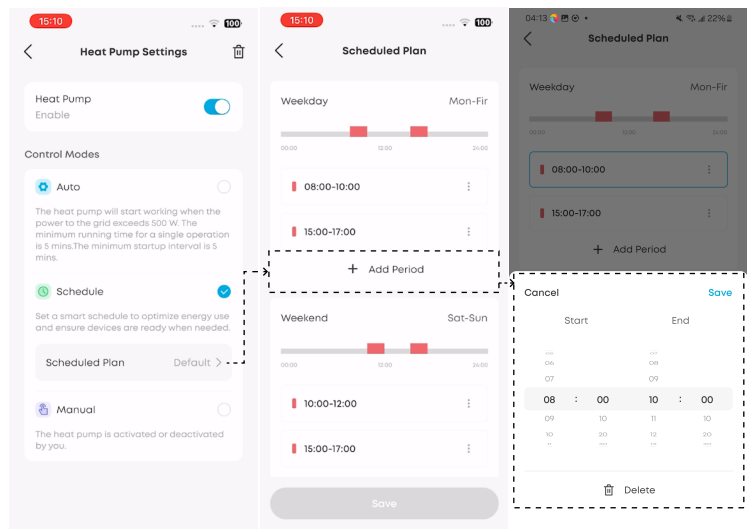
The heat pump starts up when the solar power supplied to the grid exceeds the rated power of the heat pump.

- **Active Power:** Enter the rated power of the heat pump.
- **Active Time:** Set the minimum ON duration of the heat pump to avoid rapid ON/OFF cycles.
- **Starting Protection Delay:** Set the minimum OFF duration of the heat pump to avoid rapid ON/OFF cycles.



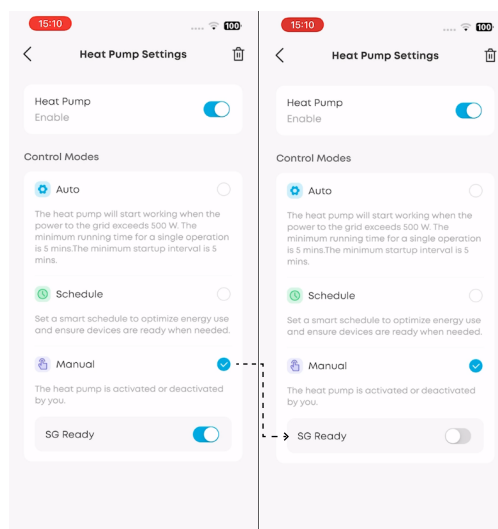
Schedule Mode:

The heat pump operates according to a predefined schedule. You can customize up to four time periods for weekdays and weekends respectively.



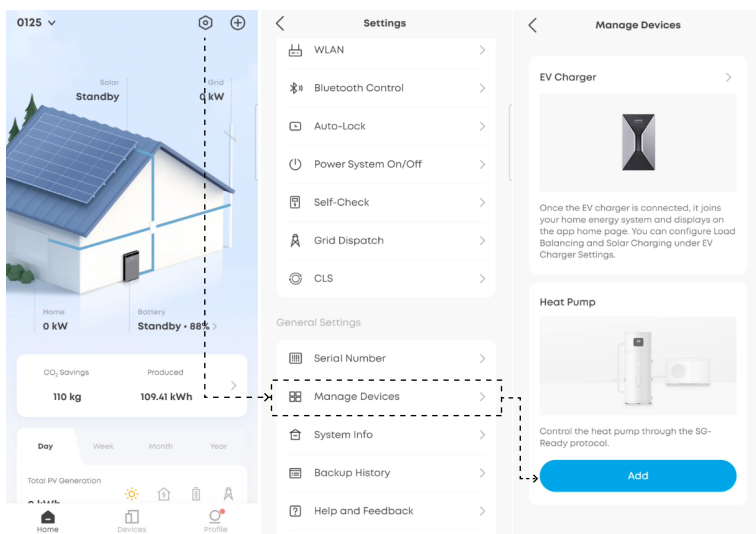
Manual Mode:

Enable this mode to manually turn the heat pump on/off.

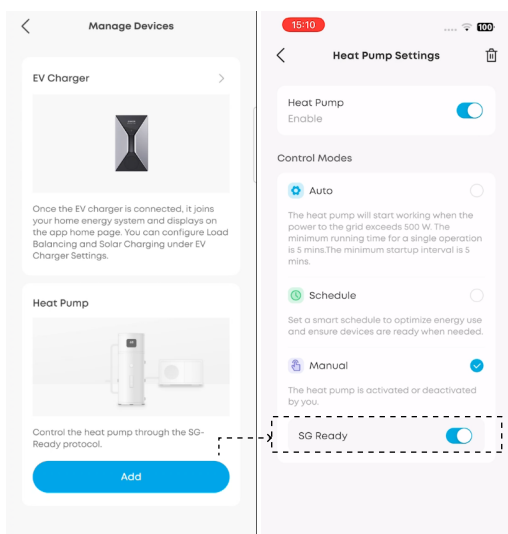


Option 2: Using the Anker App (User)

1. Add the heat pump to the system.



2. Enable the heat pump function. You may be prompted to update the firmware to the latest version.



3. Select and configure the control mode. See Control Modes in the guide for details.



Once the setup is complete, users can monitor the heat pump's performance on the home screen of the Anker app.