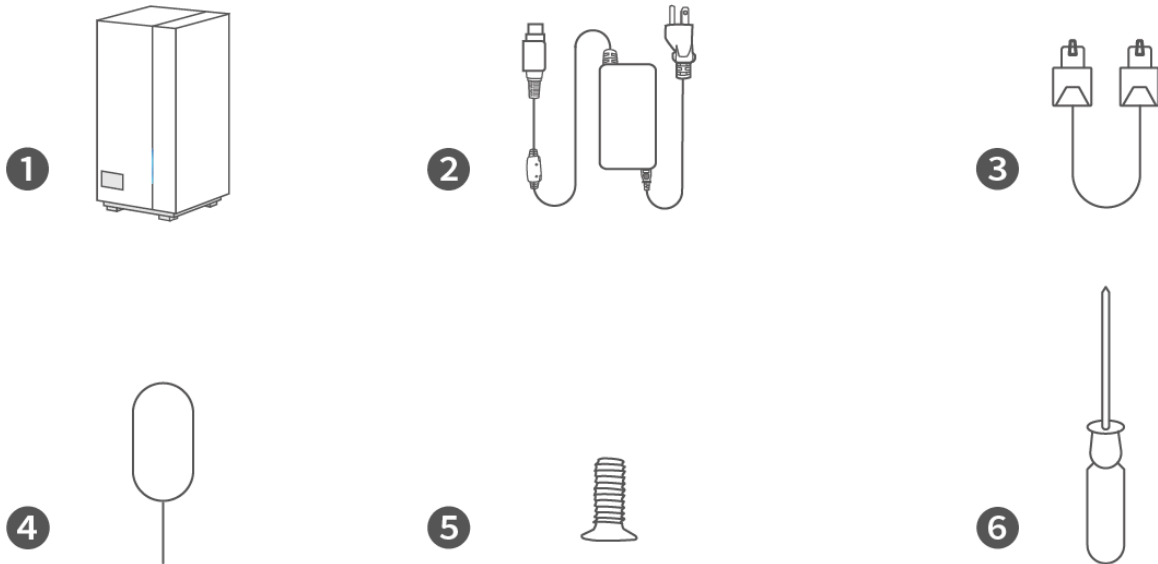


# eufy HomeBase Professional S1

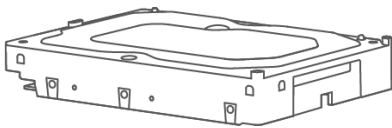
The HomeBase Professional is the brain and primary siren of your ExpertSecure system. It communicates with all of your devices and sends your alarm signals to our professional monitoring center if you subscribe to the Professional Monitoring Service.

## What's in the Box



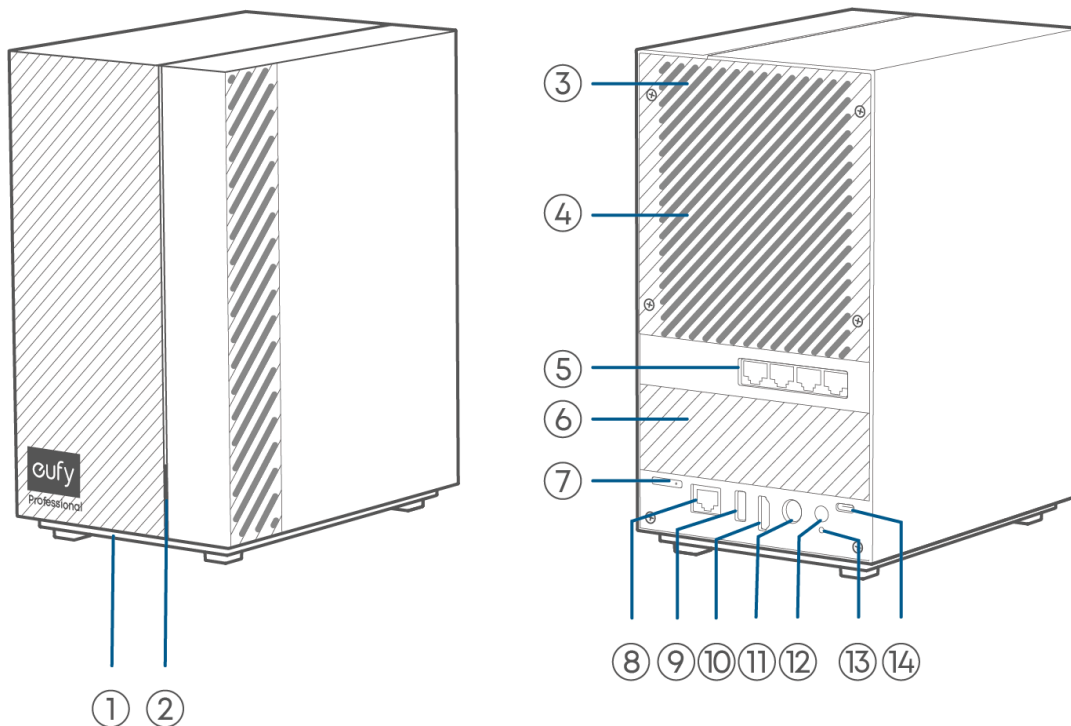
1. HomeBase Professional
2. Power Adapter
3. Ethernet Cable
4. Detaching Pin
5. Screw Pack
6. Phillips Screwdriver

## Tools/Devices You May Need (Not Provided)



Hard Drive

# At a Glance

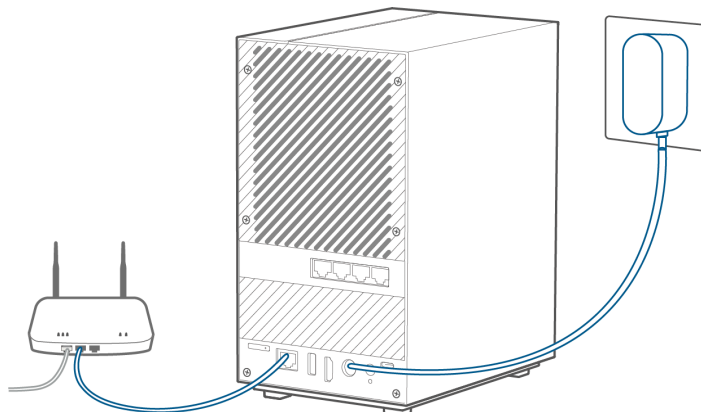


1. Alarm Siren
2. Status LED
3. Speaker
4. AI Card Bracket
5. PoE Ports
6. Hard Drive Bay
7. SIM Card Slot
8. Ethernet Port
9. USB-A Port
10. HDMI Port
11. Power Port
12. SYNC/ALARM OFF Button
13. Reset Hole
14. USB-C Port

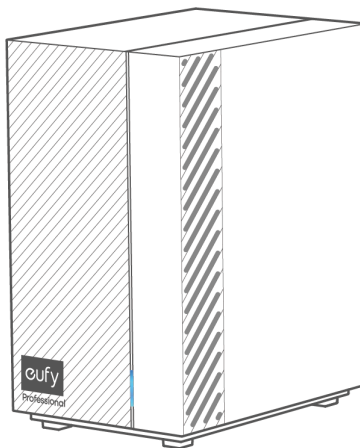
# Set Up Your HomeBase

💡 You will need to complete the setup of the HomeBase before adding other devices to the alarm system.

1. Power on and connect the HomeBase to your router's LAN port.



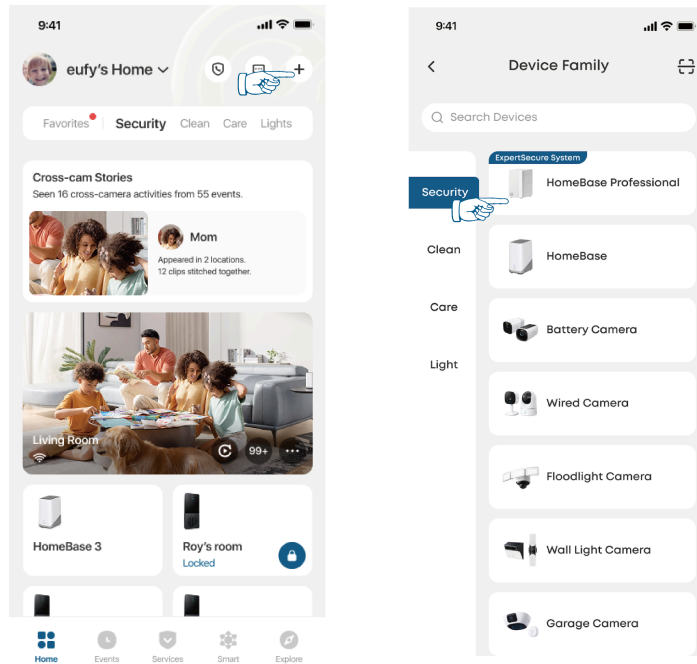
2. The LED indicator will turn blue (This may take about 1 min) when the HomeBase is ready for setup.



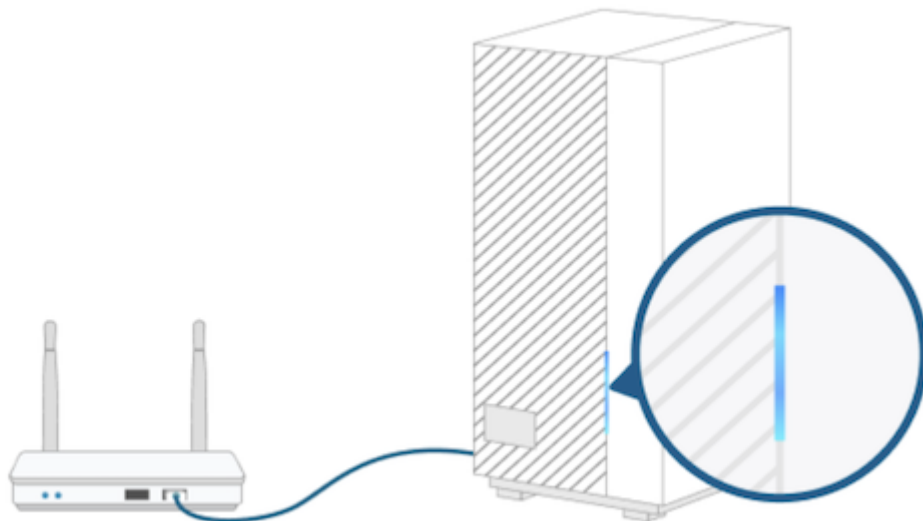
3. Download the eufy app, and sign in or create an account.



4. Tap the [+] icon on the home screen, and select **HomeBase Professional** in the Device Family, and follow in-app instructions to complete the setup.



## LED Indication



**Solid Red:** Disconnected from the network

**Flashing Red:** Booting up or connecting to the network

**Solid Blue:** Connected to the network successfully

**Flashing Blue:** Connected to the network successfully but has not been setup

Flashing **Red** and **Blue** alternately: Upgrading firmware

## Recommended Location

- On a tabletop or shelf 3 - 5 ft (1-1.5 m) high near an electrical outlet.
- Where children cannot reach it.

- At least 4 in (10 cm) to ensure proper heat dissipation between the sides and back of the base station and the wall.
- No metal plates on the sides or above the base station to avoid affecting wireless communication.

The HomeBase Professional should be connected to AC power, so an outlet should be available within 5 feet. The outlet must not be controlled by a switch and must provide continuous power. The HomeBase Pro receives all battery camera and sensor events wirelessly, so a more central location is preferred in your home (depending on size). If you locate the HomeBase in a far corner of the house, it may not be able to receive signals from the opposite side of your home. You can locate the HomeBase in a first or second-floor room. In general, basement locations are not as good for wireless coverage.

## Expanding HomeBase Storage (Optional)

HomeBase Professional comes with 32GB of storage for saving events. For continuous video recordings, you can install a hard drive (up to 16TB) to expand storage.

### Step 1. Prepare Your Hard Drive

⚠ Before you start, transfer all the data in your hard drive to a secure location before adding it to the HomeBase Professional.

Your hard drive must meet the following requirements:

**Type:** Hard disk drive (HDD) or solid-state drive (SSD) that uses the SATA interface

**Size:** 3.5 inch

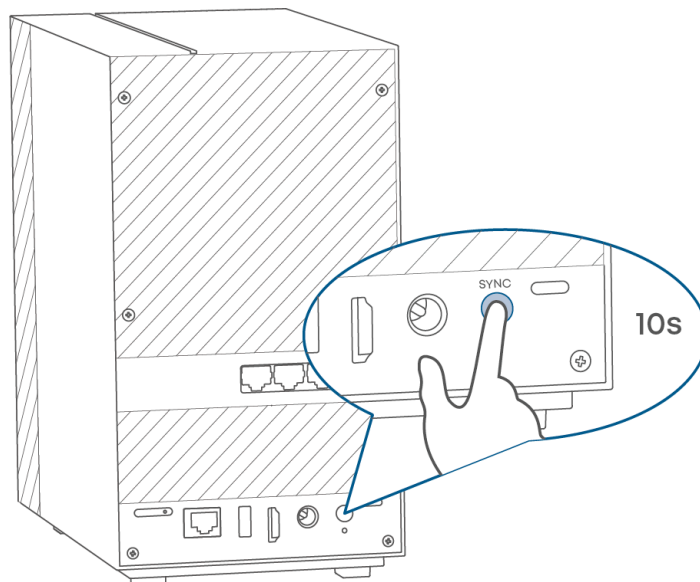
**Capacity:** 16TB

**Recommended:** Surveillance Hard Drive from Western Digital or Seagate

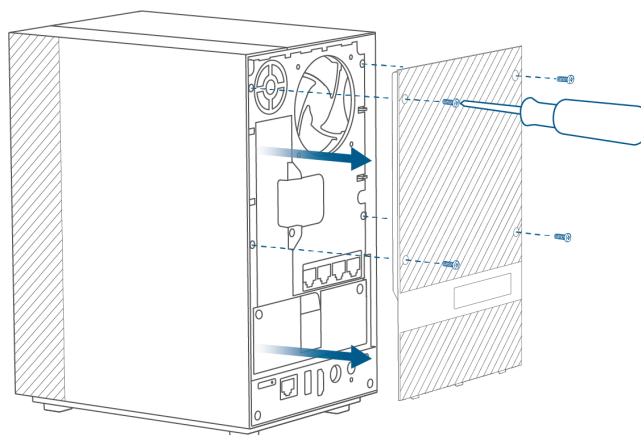
### Step 2. Install the Hard Drive

⚠ HomeBase Professional must be powered off when you install or remove the hard drive.

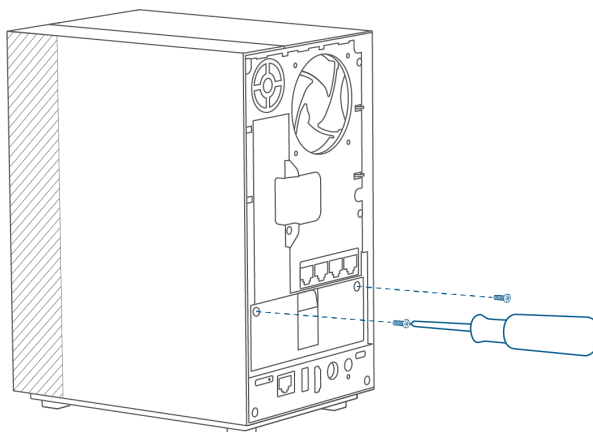
1. Press and hold the SYNC/ALARM OFF button for 10 seconds to turn off the HomeBase.



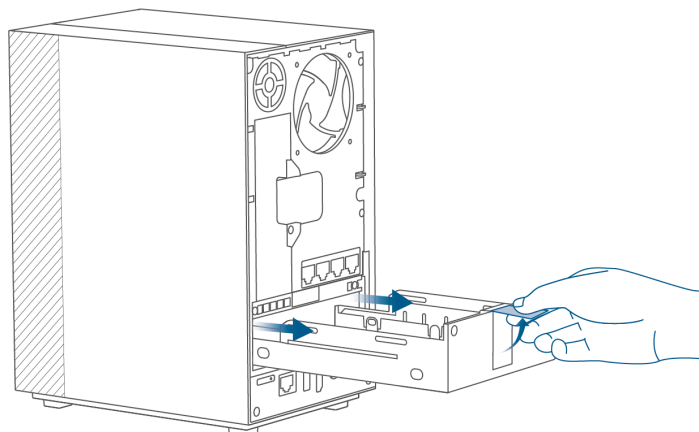
2. Unscrew and remove the back cover of the HomeBase.



3. Remove the 2 screws from the hard drive bay.

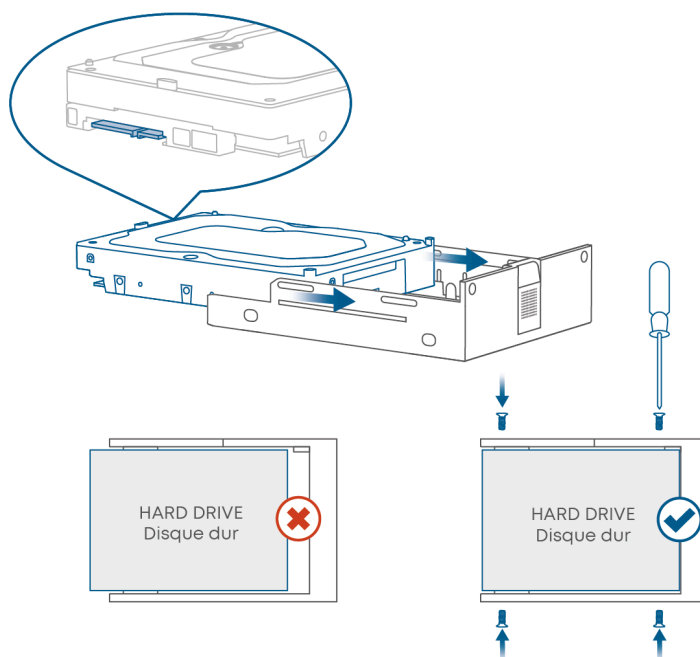


4. Hold the bay handle and pull out the hard drive bay.

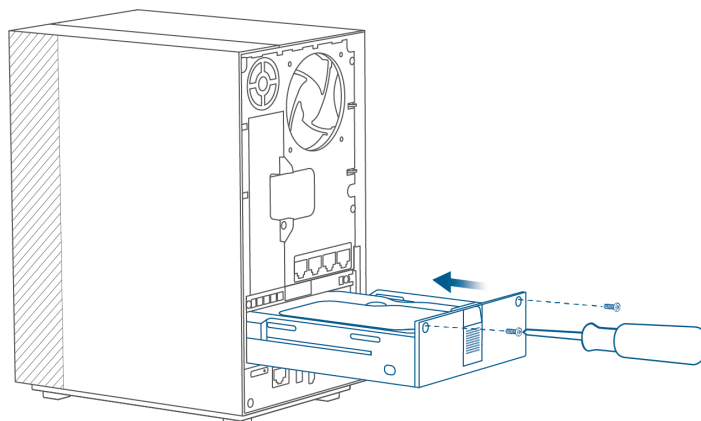


- Slide the hard drive into the bay until it fits snugly against the back of the bay, ensuring there is no gap, and secure it using the provided screws.

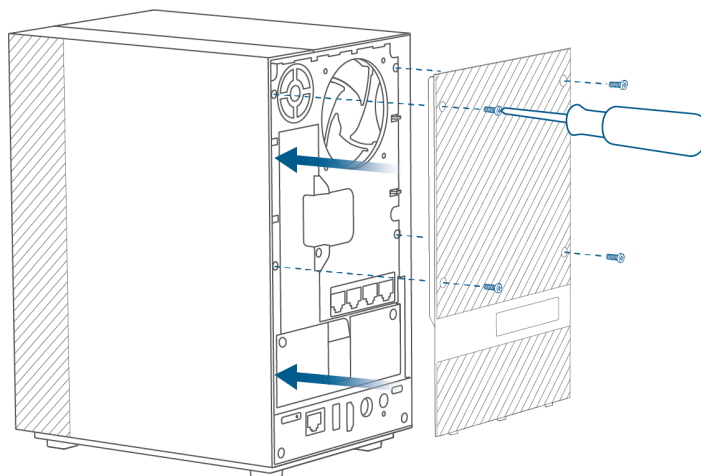
💡 Make sure the SATA interface is facing outward.



- Insert the hard drive bay back into the HomeBase, and secure with the screws.



- Place the back cover back to the HomeBase, and secure with screws.

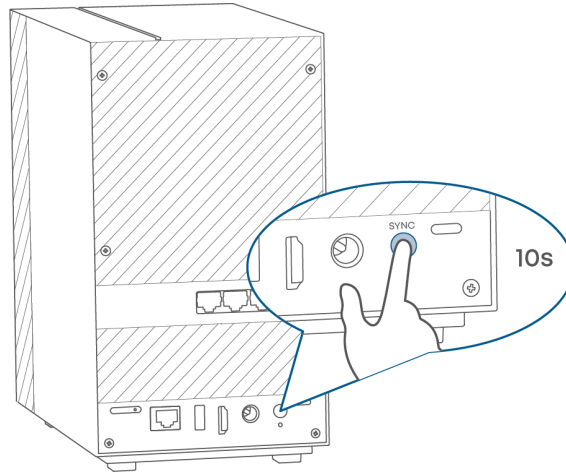


# Expanding AI Capacity (Optional)

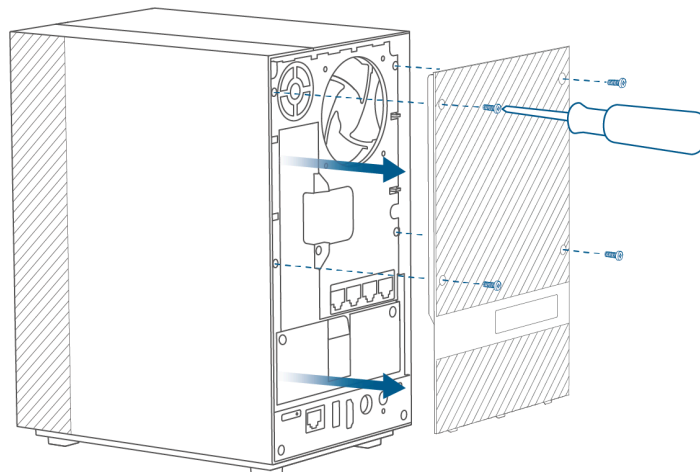
HomeBase Professional comes with a chip for edge computing. You can also add another AI card (sold separately) to expand the AI capacity.

⚠ HomeBase Professional must be powered off when you install or remove the AI card.

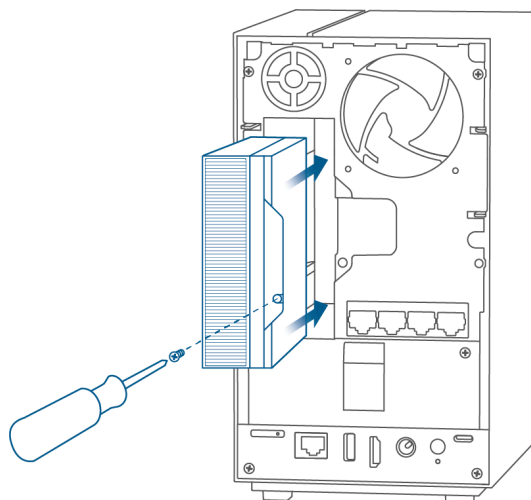
1. Press and hold the SYNC/ALARM OFF button for 10 seconds to turn off the HomeBase.



2. Unscrew and remove the back cover of the HomeBase.

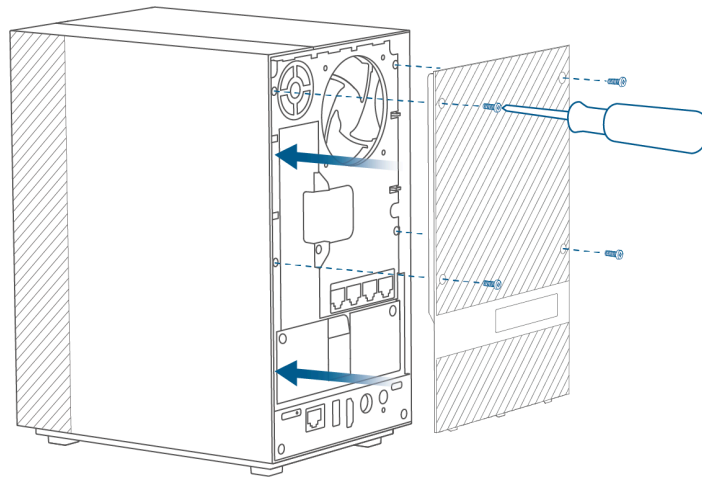


3. Insert the AI card into the AI card bracket, and secure with a screw.





4. Place the back cover back to the HomeBase, and secure with screws.



## Specifications

### Dimensions

8.66 × 4.76 × 6.69 in (220 × 121 × 170 mm)

### Connection

Number of Supported Devices:

- Up to 16 battery cameras / video doorbells (Wi-Fi devices)
- Up to 4 PoE cameras, expandable up to 16 via a PoE switch
- Up to 34 eufy sensors (Sub-GHz)

### Storage

Built-In: 32 GB eMMC

Expandable: 3.5 inch hard drive

Video Storage: video clips / 24/7 video recording

Backup Storage: USB drive required

### AI Features

- Self-Learning Algorithm
- Face Recognition
- Human Detection
- Vehicle Detection
- Pet Detection
- eufyCare GPT
- eufy EdgeAI Core – Dedicated slot for eufy EdgeAI Core (sold separately).

### Interface

LAN Ports: 4× 10/100/1000 Mbps, Supports PoE+ (IEEE 802.3af/at)

USB Ports: 1 USB-A port + 1 USB-C port (for charging and data transfer)

SATA Ports: 1 (for hard drive connection)

HDMI Ports: 1 (supports 4K output)

## **Power and Network Backup**

4G: 4G LTE Cat4 (Up to 150 Mbps Download / 50 Mbps Upload)

Battery: 96Wh Integrated Battery

## **Other**

CPU: Octa-Core

Siren: 120 dB at 0.1m

Operating Temperature: 14°F - 104°F (-10°C - 40°C)

## **Description of Open Ports and Services on the Network**

### **Ethernet Port**

- Upon initial power-on or after a reset, the HomeBase Professional typically obtains an IP address via DHCP.
- The Ethernet connection status can be viewed and confirmed through the device management interface or the mobile app.
- The user only needs to plug in the Ethernet cable and ensure that the router or switch is functioning properly.

### **Wi-Fi (2.4GHz/5GHz)**

- After powering on, the HomeBase Professional will create a Wi-Fi hotspot, waiting for the camera to connect to the HomeBase Professional.