

**What's in the Box**

**At a Glance**

**How the Solar Panel Works**

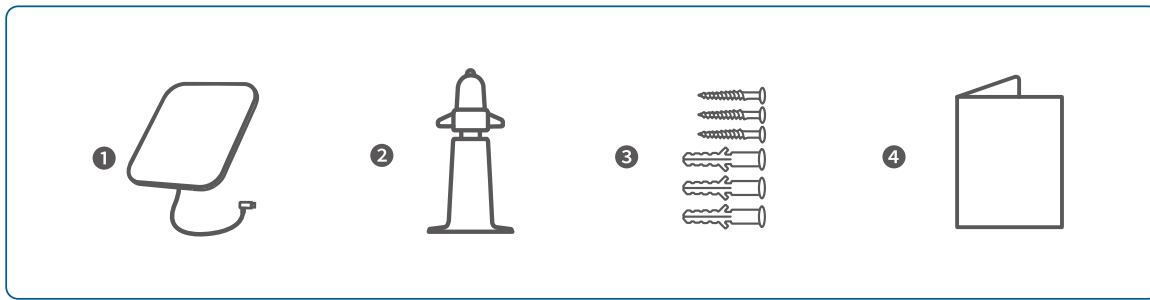
**Position the Solar Panel**

**Mount the Solar Panel**

**Connect the Solar Panel to Your Camera**

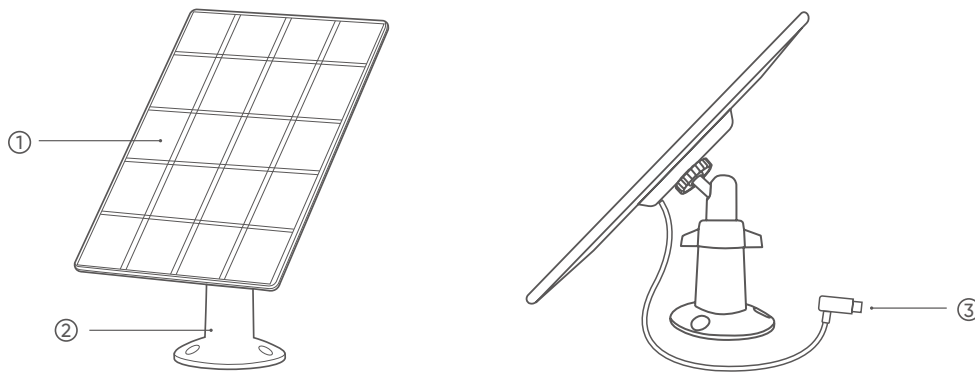
**Set Up the System**

## What's in the Box



- ❶ Solar Panel with Cable3
- ❷ 360° Mounting Bracket
- ❸ Screw Pack
- ❹ Quick Start Guide

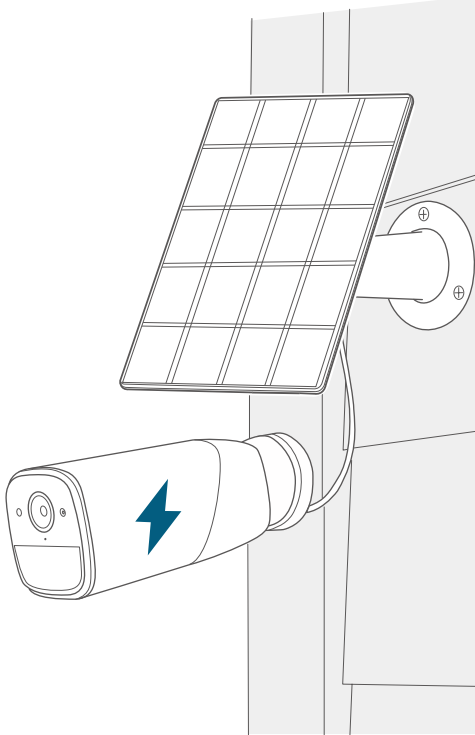
## At a Glance



- ❶ Solar Panel
- ❷ Mounting Bracket
- ❸ USB-C Cable

## How the Solar Panel Works

The Solar Panel works with our eufy series security cameras. When placed in direct sunlight, the Solar Panel provides energy to your connected cameras. To get the maximum amount of sunlight exposure, install the Solar Panel on the roof or wall outside of your house.



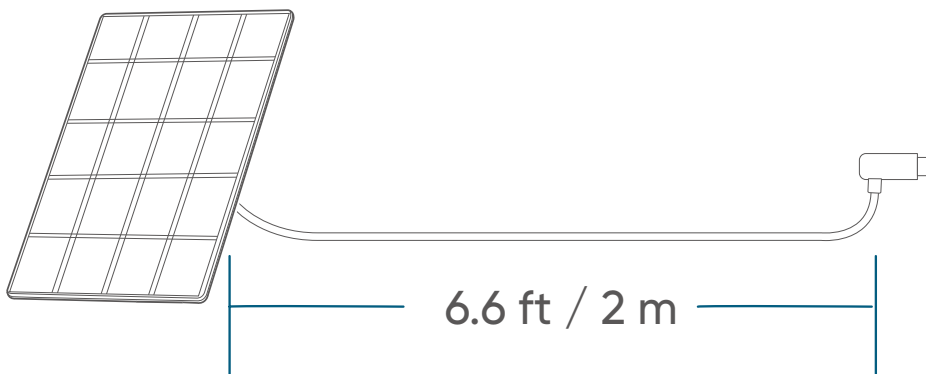
## Position the Solar Panel

While positioning the Solar Panel, keep the following factors in mind. These factors may affect Solar Panel efficiency:

- Weather conditions will impact the levels of energy produced
- Dirt or debris on the panels can negatively impact the intake of sunlight
- The amount of sunlight that the Solar Panel receives

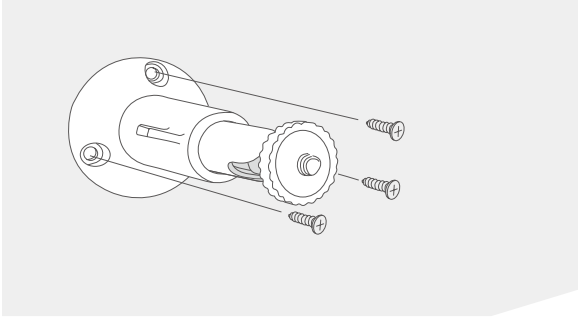
To optimize your Solar Panel efficiency, identify an optimal position on your roof or wall for installation.

- Select a location where the Solar Panel can get the most sunlight throughout the year.
- Position your Solar Panel south-facing (in the Northern Hemisphere) or north-facing (in the Southern Hemisphere), and tilt the panel at a 30° angle.
- Regularly wipe/clean your Solar Panel to keep it free of debris and dirt.
- Keep your Solar Panel and camera within 6.6 ft / 2 m of each other.

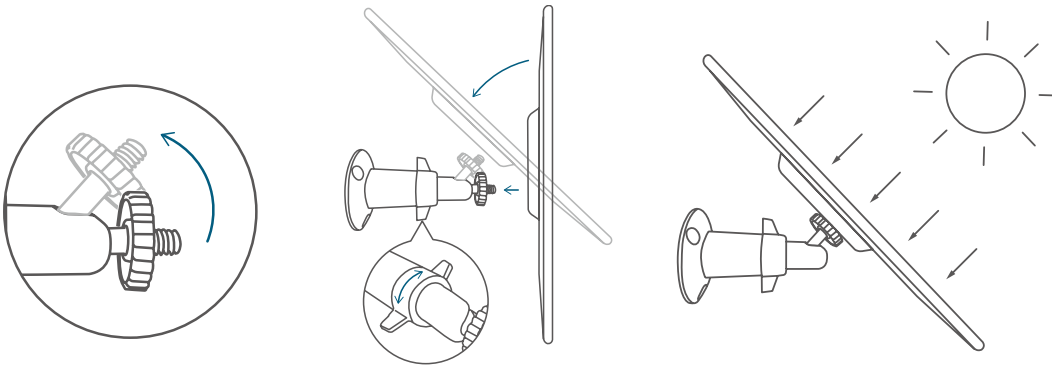


## Mount the Solar Panel

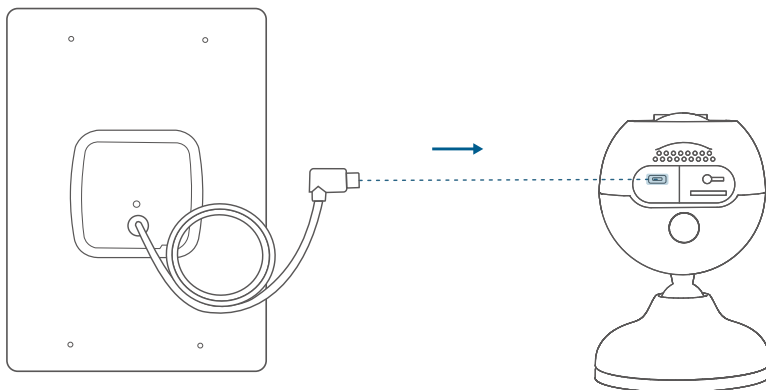
1. Place the mounting bracket against a wall or roof and secure it with the included screws.
  - For walls or roofs that are made out of hard materials such as concrete, brick, or stucco, insert anchors first.
  - Anchors are not needed for wooden walls or roofs.



2. Screw the Solar Panel to the mounting bracket and make sure it is well secured.
3. Angle the Solar Panel on the mounting bracket to receive the largest amount of sunlight. A 30° tilt is recommended.



## Connect the Solar Panel to Your Camera



## Set Up the System

1. Download and install the eufy app, and sign in or create an account.

💡 Make sure your app is updated to the latest version.



2. Follow the in-app instructions to add the device and complete the setup.