

1. About This Guide

1.1 Purpose and Scope

1.2 Related Solution Guide

1.3 Model Reference

2. Unboxing

2.1 Check Before Installation

2.2 What's in the Box

2.3 Optional Accessory

3. Product Overview

4. Pre-Installation

4.1 Site Selection

4.2 Measurement

4.3 Tools and Accessories

5. Installation

Precautions

Step 1. Drill Cable Entry Hole

Step 2. Install Inlet Box to Wall

Step 3. Remove Protective Film

6. Electrical Connections

6.1 Connect Power Cables

6.2 Connect Signal Cables

Choose a Monitoring Option

Option A: Use CTs (Included)

Option B: Use Anker SOLIX Smart Meter (Sold Separately)

6.3 Connect to the EPO Device

6.4. Secure the Panel Cover

7. Specifications

8. Safety Information

1. About This Guide

1.1 Purpose and Scope

This guide provides step-by-step instructions for learning and installing Anker SOLIX Smart Inlet Box.

1.2 Related Solution Guide

Refer to the following section of the [E10 System and App Guide](#) for the related application scenario.

Application Scenario	Section
Use with Anker SOLIX E10	Manual Backup System (A17E1, AS211)

1.3 Model Reference

Model	Product Name	Shortened Form
AS211	Anker SOLIX Smart Inlet Box	Inlet Box
A17E1	Anker SOLIX E10 Power Module	Power Module
A17E1141-85	Anker SOLIX B6000 Battery Module	Battery Module
A17E1, A17E1141-85	Anker SOLIX E10	E10

2. Unboxing

2.1 Check Before Installation

Inspect the Outer Packaging

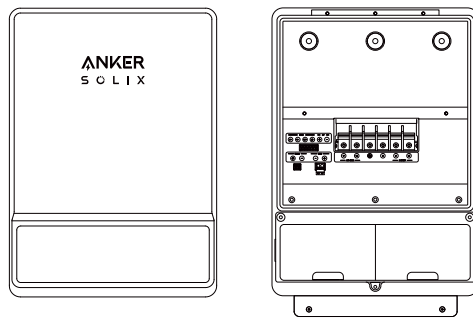
Before unpacking, inspect the outer packaging for holes, cracks, or other damage, and verify the equipment model number.

If any damage is found or the model does not match your order, do not unpack the equipment. Contact customer support immediately.

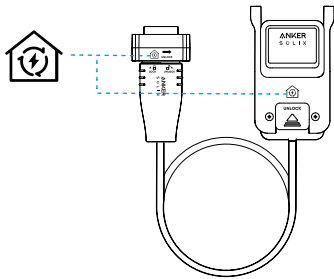
Verify Contents

After unpacking, check that all items are intact and complete, and free from any obvious damage. If any item is missing or damaged, please contact customer support.

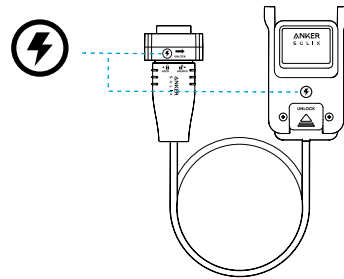
2.2 What's in the Box



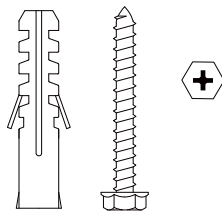
Anker SOLIX Smart Inlet Box



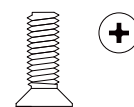
On-Grid Cable



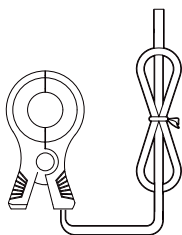
Backup Power Cable



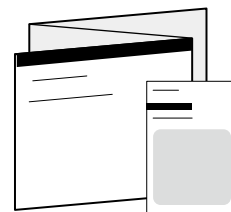
Expansion Screw (M6 50 mm) ×5



Screw (M4 10 mm) ×4



Current Transformer (200A) ×3



Documents

2.3 Optional Accessory

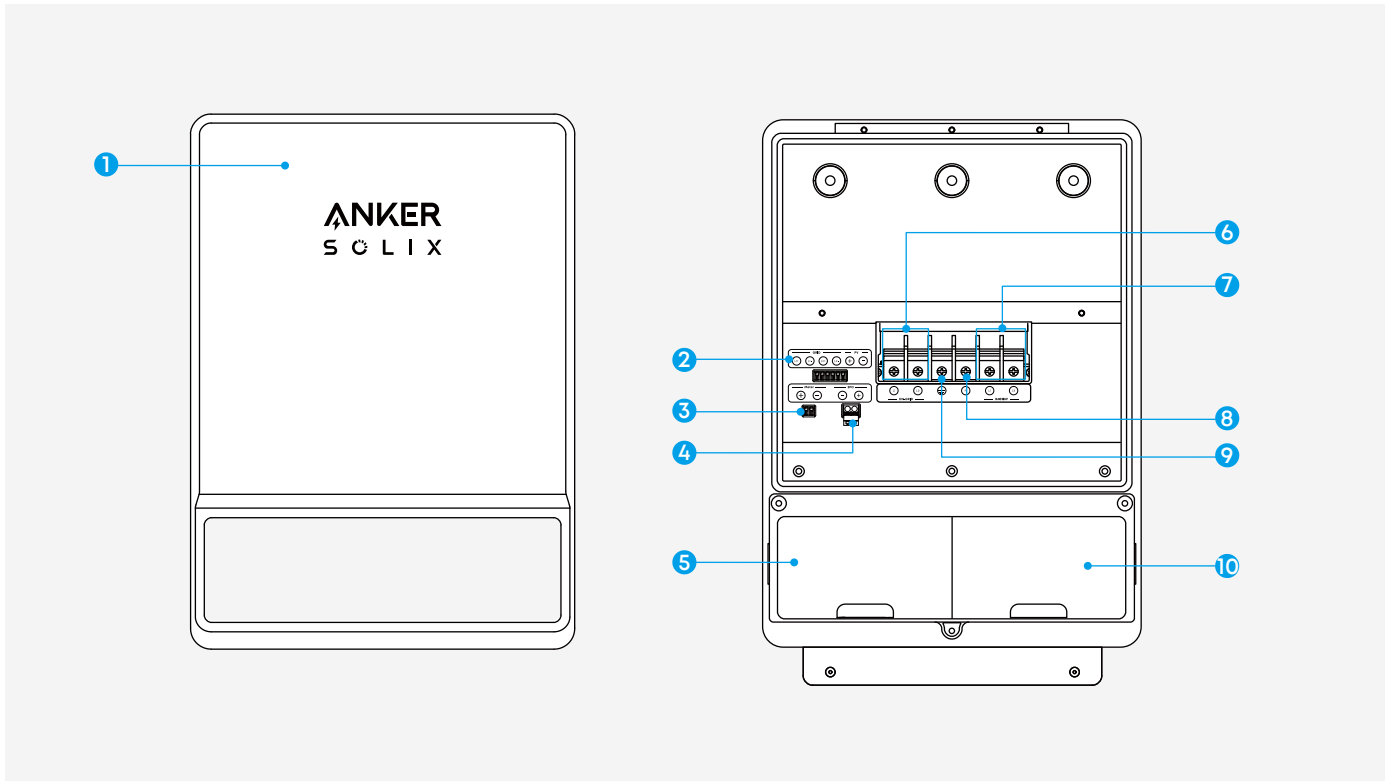
The following accessory can be ordered separately.



Anker SOLIX Smart Meter

- Serves as an alternative to the included CTs.
- Provides enhanced data accuracy and supports wireless connection.

3. Product Overview



- 1 Panel Cover
- 2 CT Terminals
- 3 Smart Meter Terminals
- 4 EPO Terminals
- 5 On-Grid Port
- 6 On-Grid Terminals
- 7 Backup Load Terminals
- 8 Neutral Terminal
- 9 Ground Terminal
- 10 Backup Port

4. Pre-Installation

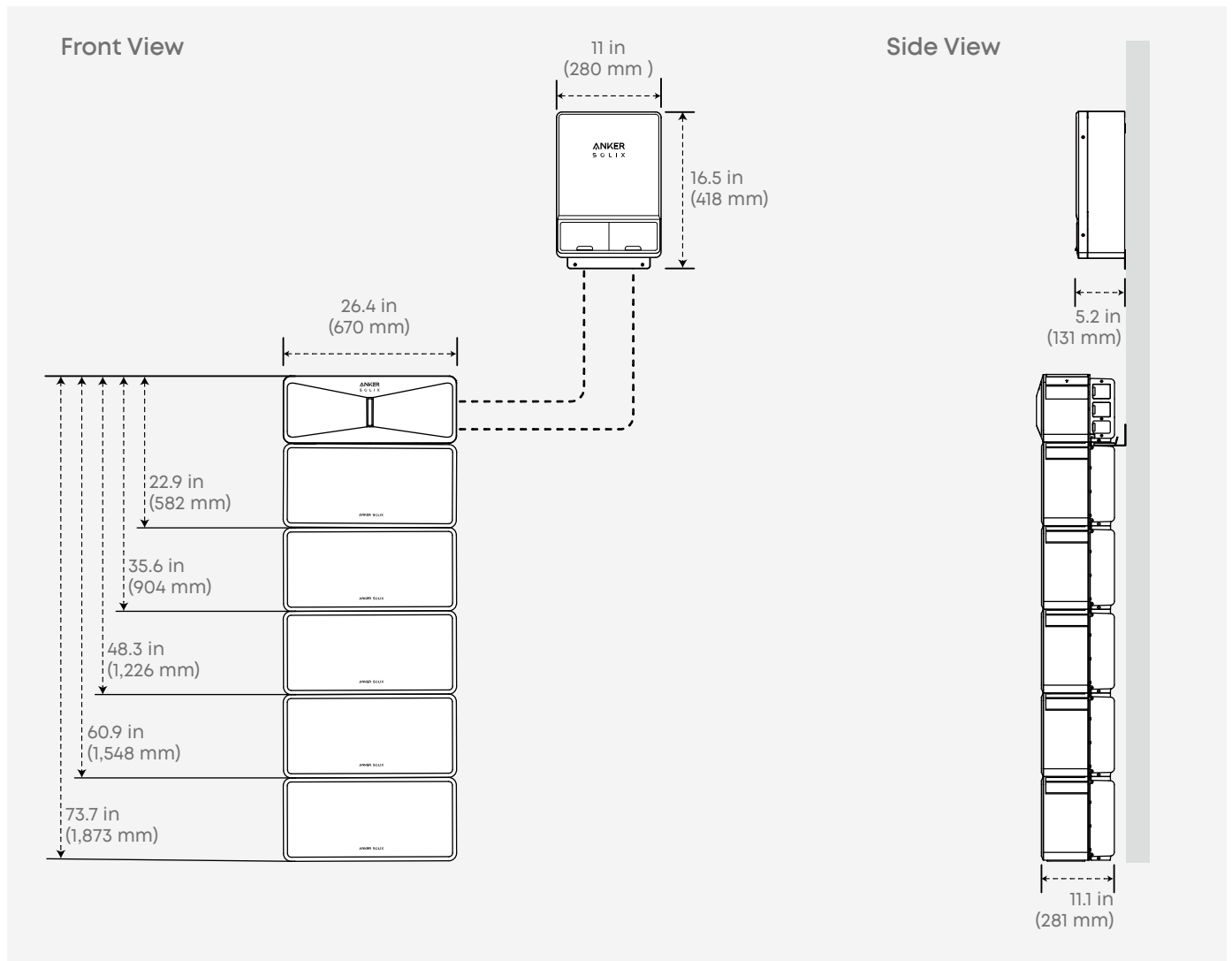
Before installation, verify that the site, space, and tools meet the requirements for safe and efficient setup of the inlet box.

4.1 Site Selection

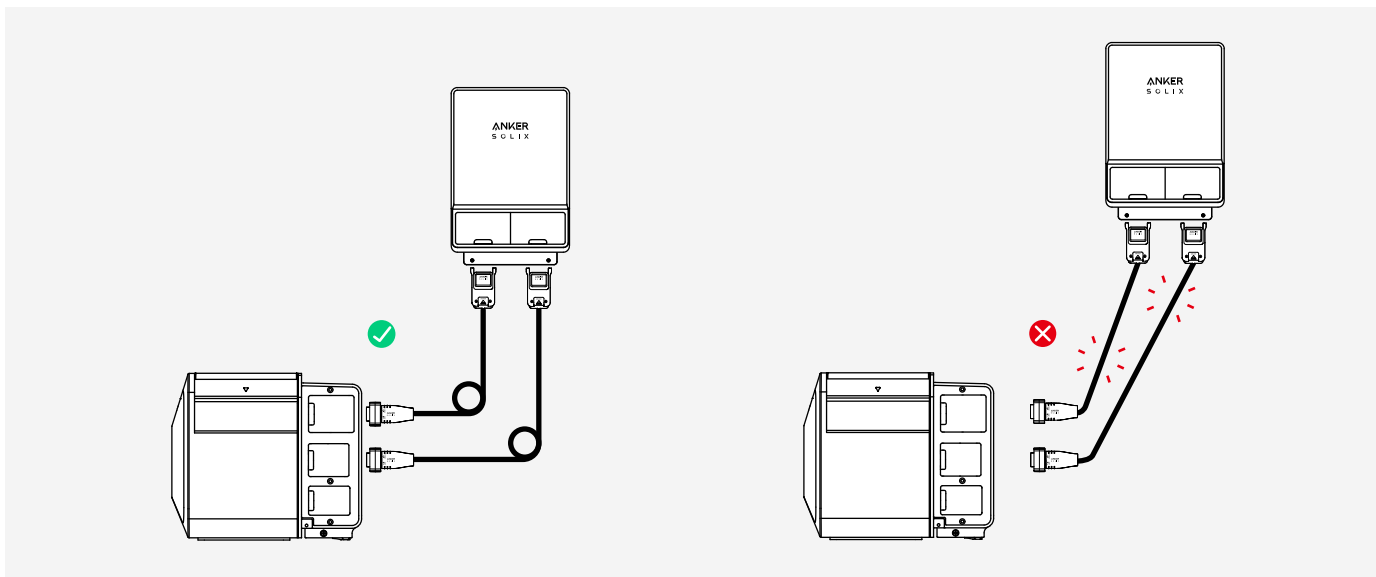
- Ensure the installation site is dry and ventilated.
- Install the inlet box away from flammable, explosive, or chemical materials.
- Confirm the wall can support the weight of the inlet box (14.3 lbs / 6.5 kg).

4.2 Measurement

Leave enough space for installing your inlet box and E10 system.

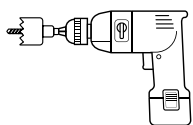


Ensure that both the on-grid and backup power cables (5.9 ft / 1.8 m) can reach the corresponding ports.

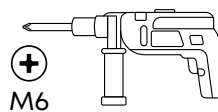


4.3 Tools and Accessories

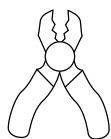
Required Items



Hydraulic Hole Puncher



Power Drill



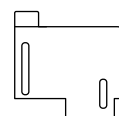
Wire Stripper



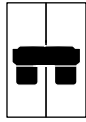
Screwdriver



Conduit Connector



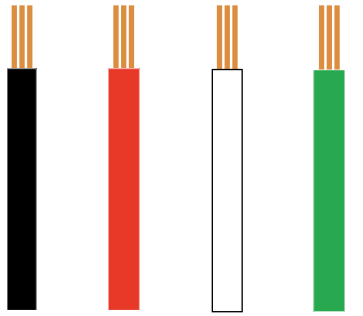
Interlock



On-Grid Breaker (40A)



Backup Load Breaker (50A)



L1 L2 N GND
Power Cables

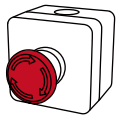
Conductor:

6AWG, 50A

8AWG, 40A

Optional Items

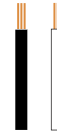
Connection to EPO Device



EPO Device



Tube Terminal (E0508)



Signal Cable
(14 AWG Max)

5. Installation

This section provides instructions for installing the inlet box.

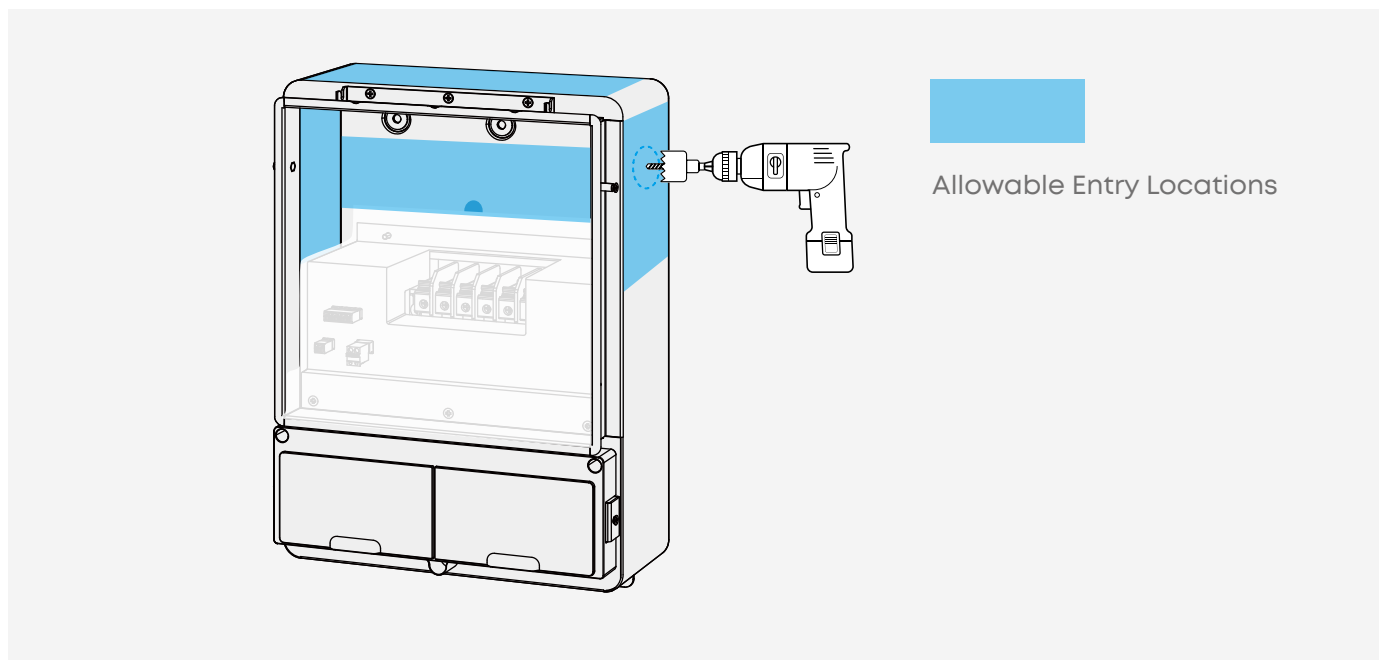
Precautions

- Installation must be performed by qualified personnel only.
- Follow local building codes for proper use of fasteners. Use self-tapping screws for wooden walls. Use expansion bolts for concrete or masonry walls.

Step 1. Drill Cable Entry Hole

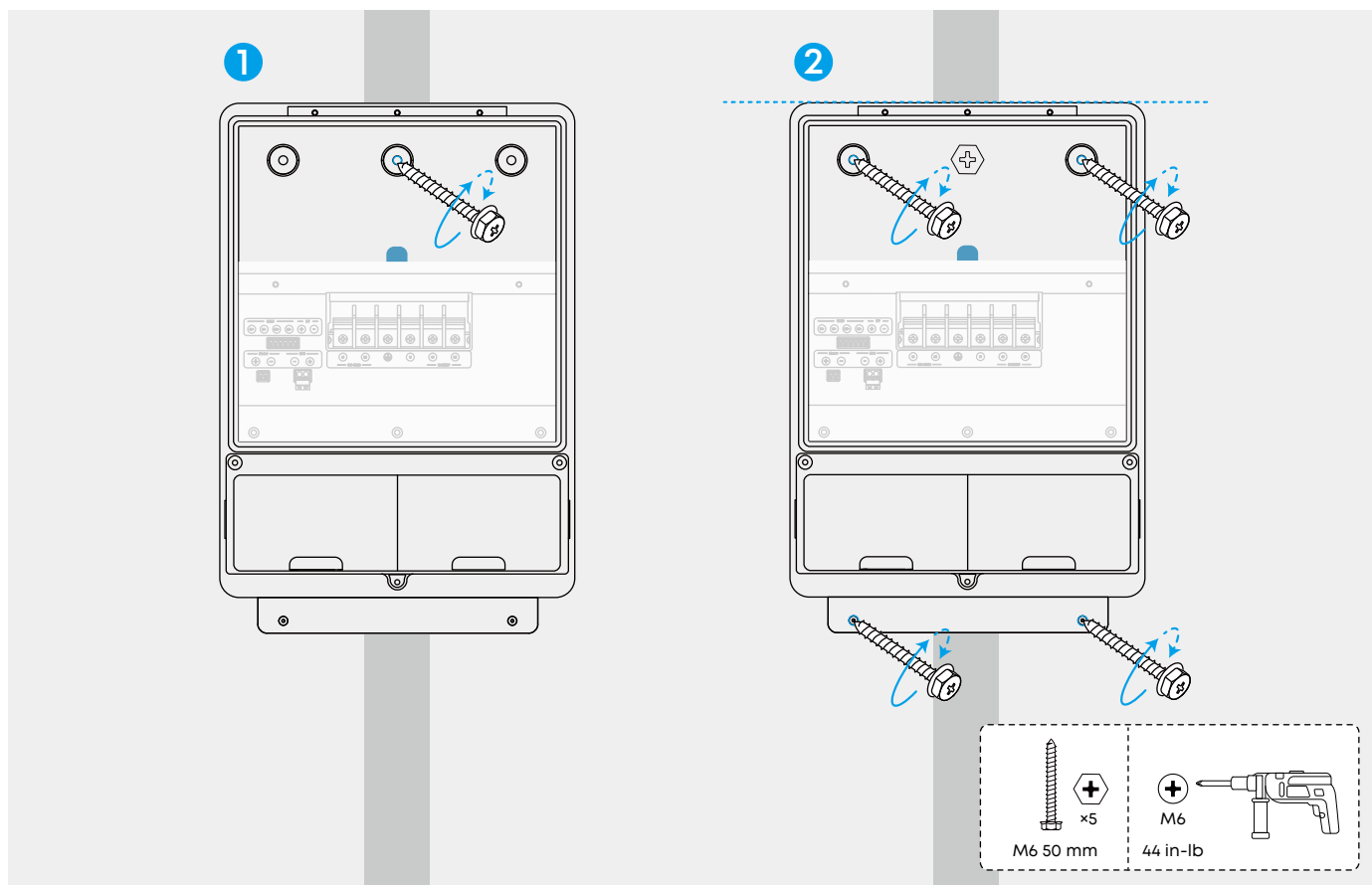
Keep the protective film in place to prevent debris from falling inside.

Drill a cable entry hole at the allowable locations using a hydraulic hole puncher.



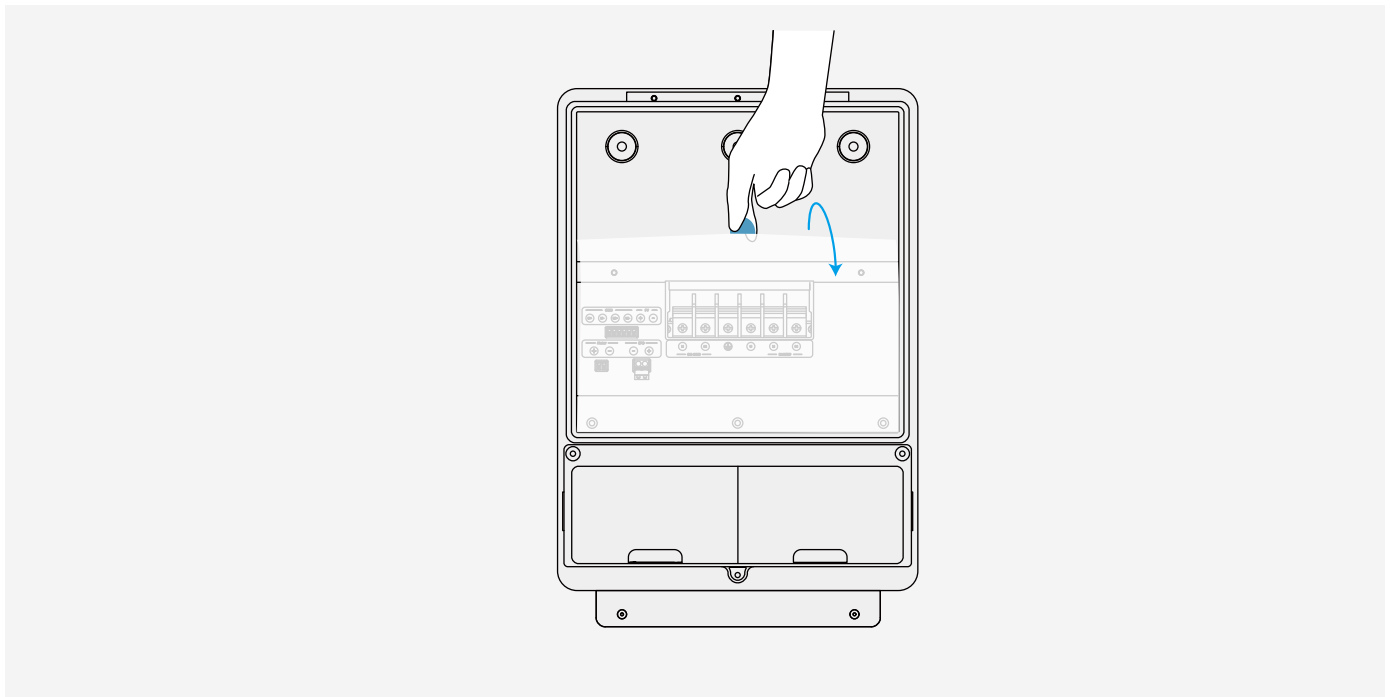
Step 2. Install Inlet Box to Wall

1. Secure the inlet box to the wood stud through one of the upper screw holes.
2. Level the inlet box and tighten the remaining four screws.



Step 3. Remove Protective Film

Clear debris from the box interior and remove the protective film. This prevents debris from interfering with terminal connections.

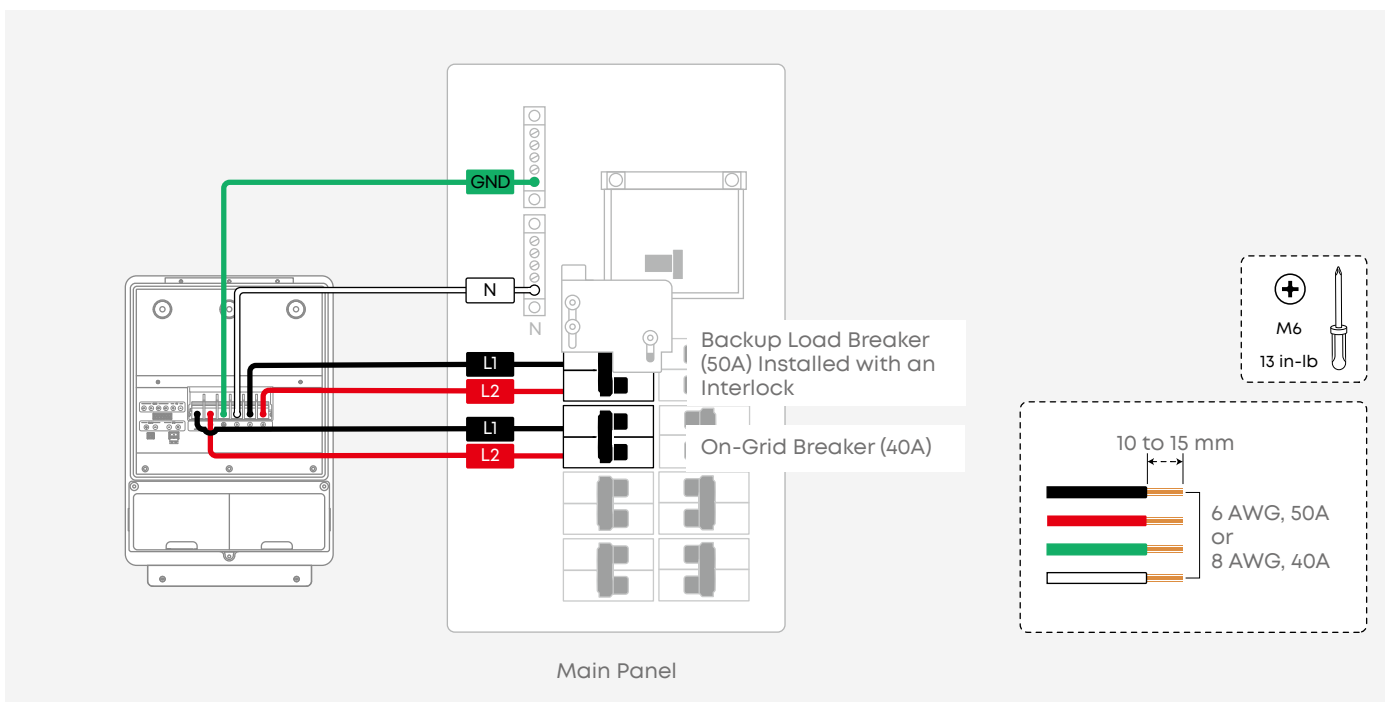


6. Electrical Connections

 Turn off the main circuit breaker before wiring.

6.1 Connect Power Cables

Install conduit connectors before running power cables into the inlet box.



6.2 Connect Signal Cables

Choose a Monitoring Option

The inlet box supports two monitoring options for tracking grid and solar power flow.

- Option A: Use the current transformers (CTs) included with the inlet box.
- Option B: Use Anker SOLIX Smart Meter (sold separately).

Both options rely on CTs to measure power flow. Before installation, verify that your main panel supports CT installation.

CTs are compatible with:

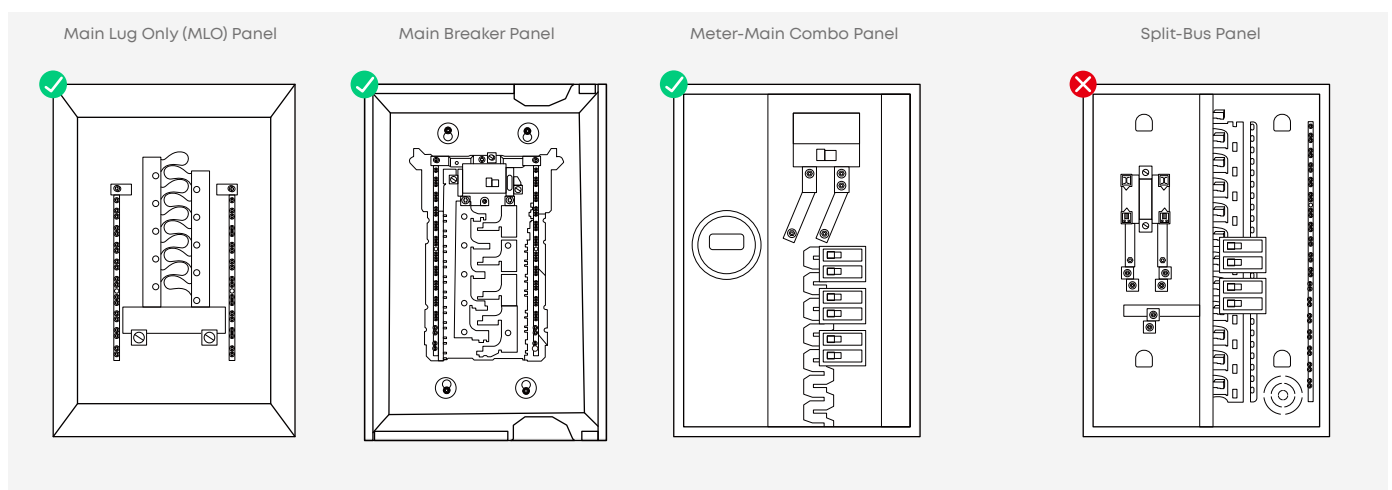
Common split-phase panels, including

- Main Lug Only (MLO) panel
- Main breaker panel
- Meter-main combo panel*

*Utility personnel may need to remove the seal so that a licensed electrician can access the service cables.

CTs are not supported on:

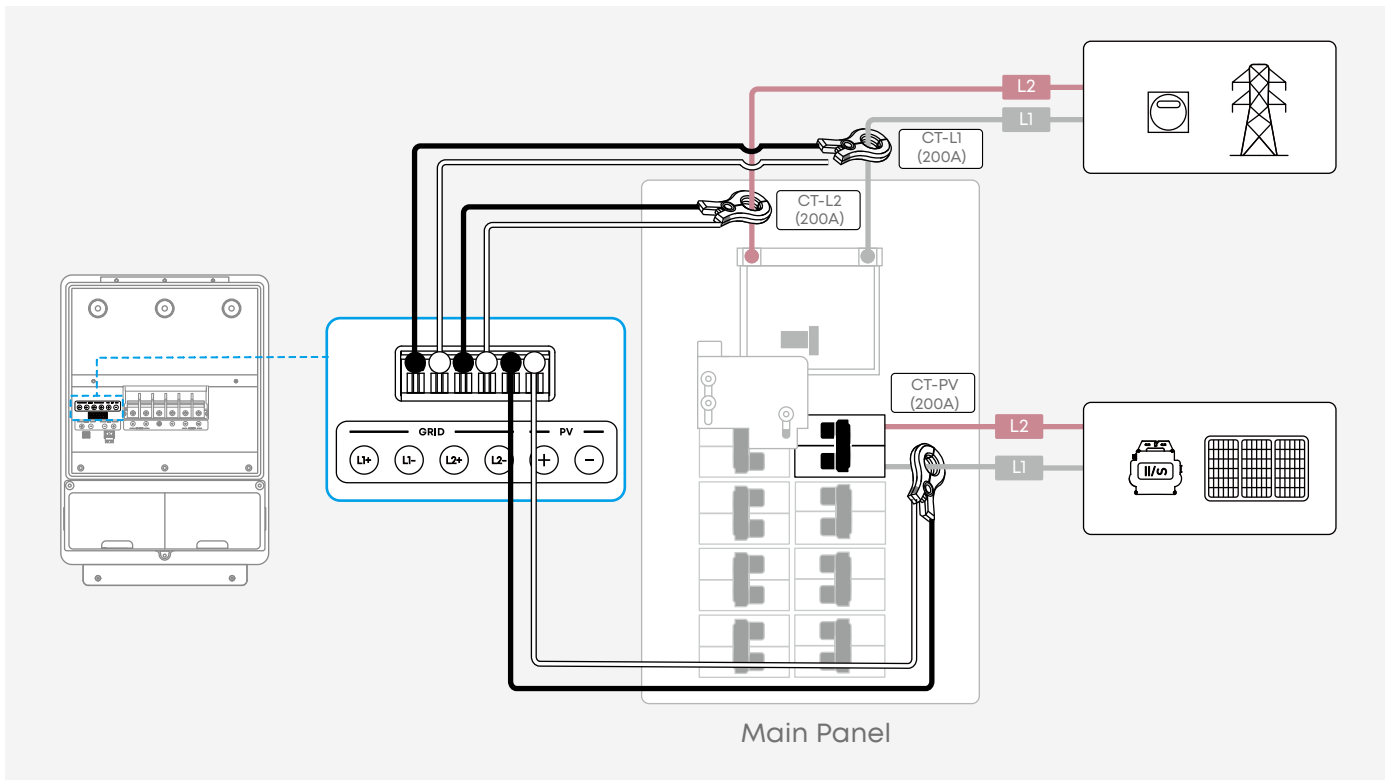
- Split-Bus panel
 - Panel with four parallel feeders*
- *Two CTs cannot measure the total load current.



Option A: Use CTs (Included)

1. Install CT-L1 on the grid L1 cable, CT-L2 on the grid L2 cable, and CT-PV on the solar L1 cable.
2. Orient each CT arrow towards the home loads.
3. Insert the CT signal cables into the CT terminals on the inlet box. The 6-pin terminal block connector is pre-installed.

Manual alignment of the CT arrows is not required because the system automatically detects current flow direction.

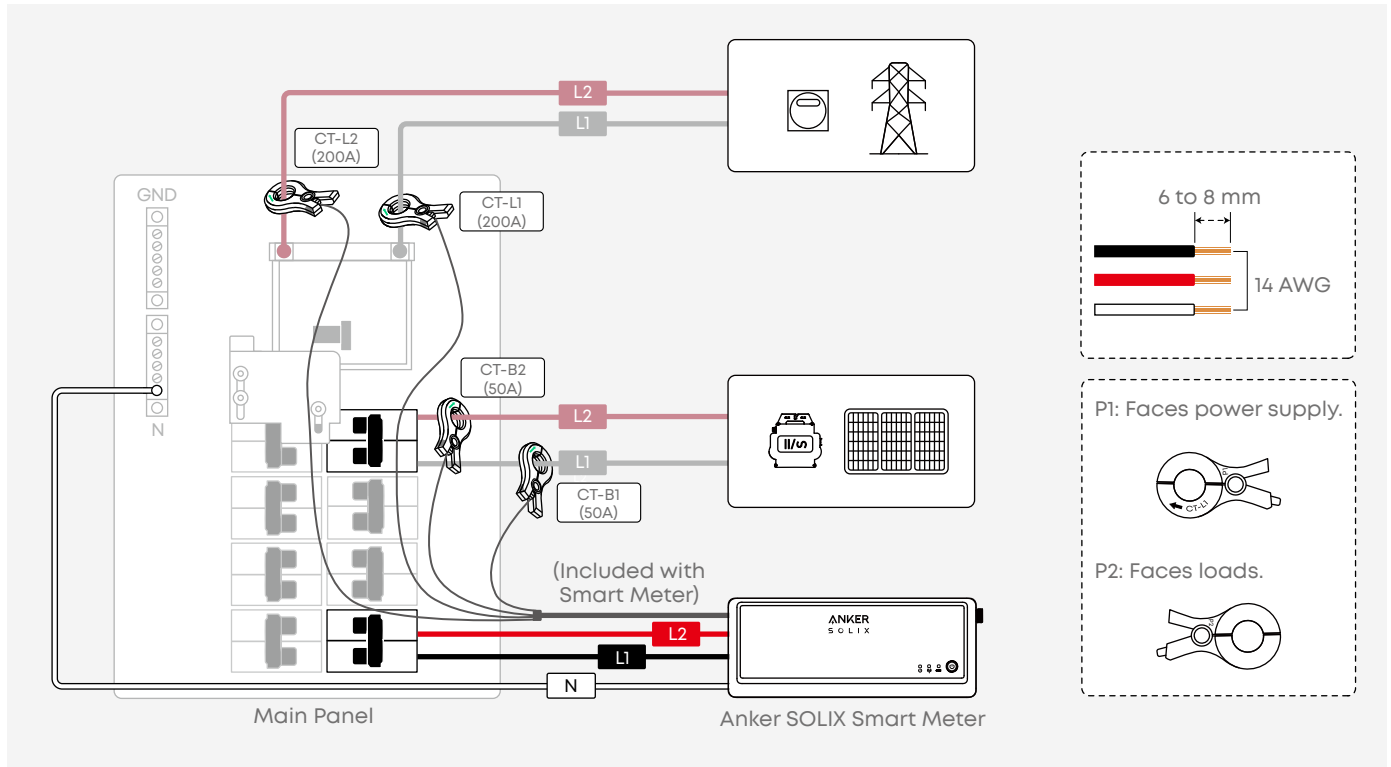


Option B: Use Anker SOLIX Smart Meter (Sold Separately)

💡 For complete instructions, refer to [Anker SOLIX Smart Meter User Guide \(A17X7\)](#).

1. Connect power cables and CTs.

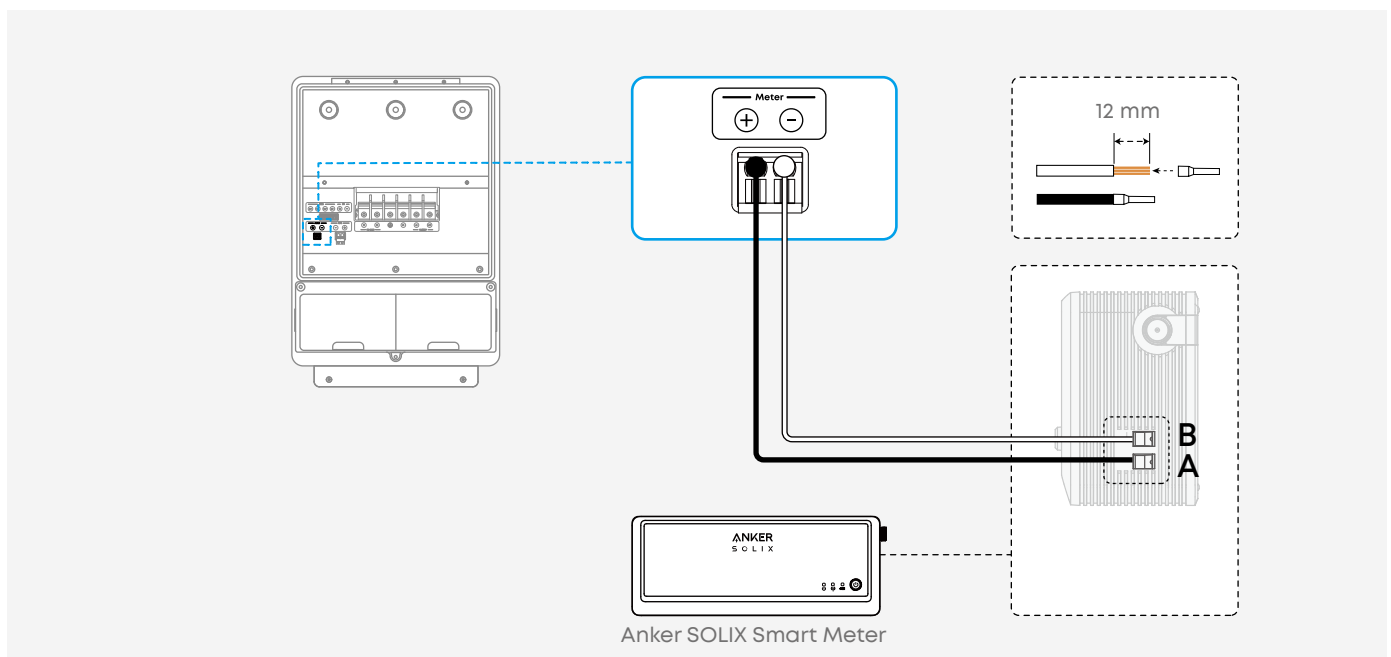
Connect L1, L2, and N cables from the smart meter to the main panel. Install CT-L1 on the grid L1 cable, CT-L2 on the grid L2 cable, CT-B1 on the solar L1 cable, and CT-B2 on the solar L2 cable.



2. Establish communication.

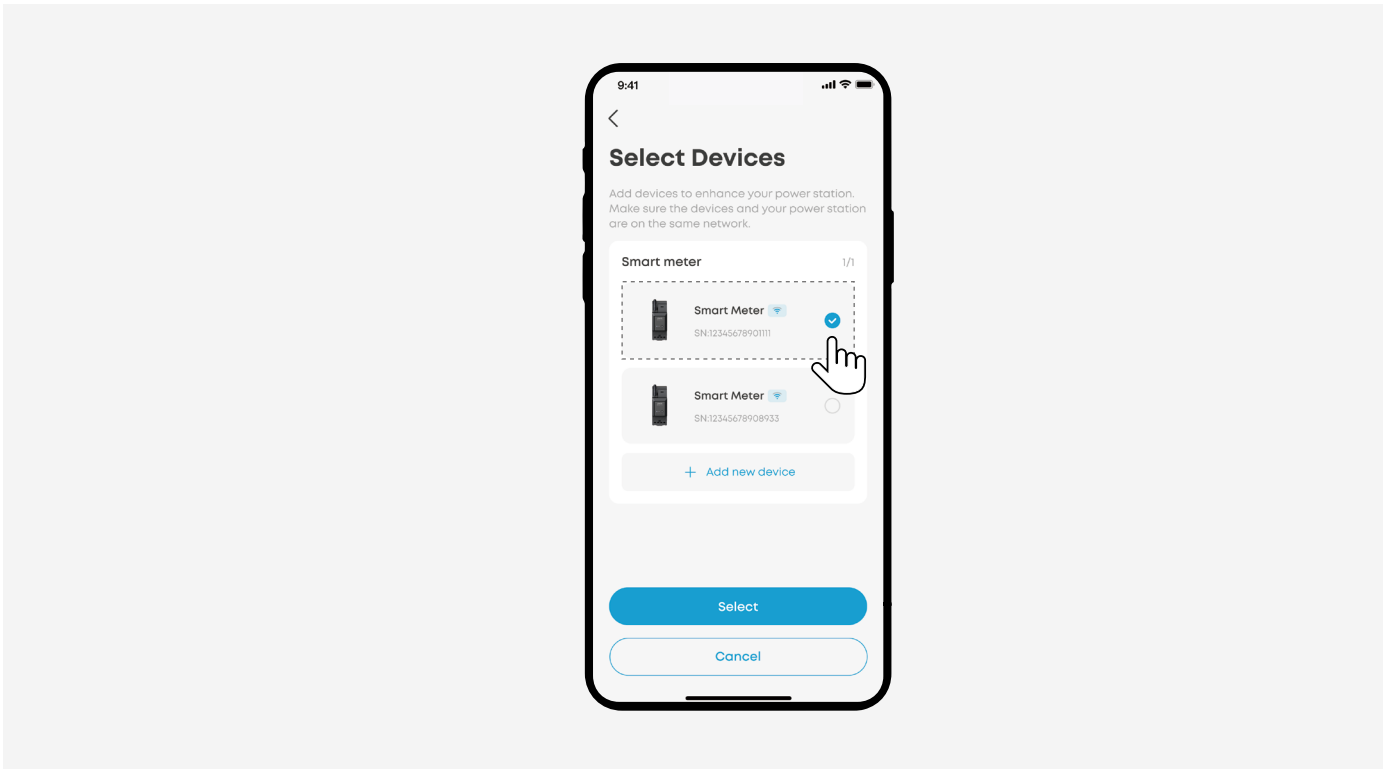
Method 1: Wired Connection

Insert the CT signal cables into the smart meter terminals. A 2-pin terminal block connector is pre-installed.



Method 2: Wireless Connection

Add the smart meter during Anker app setup.



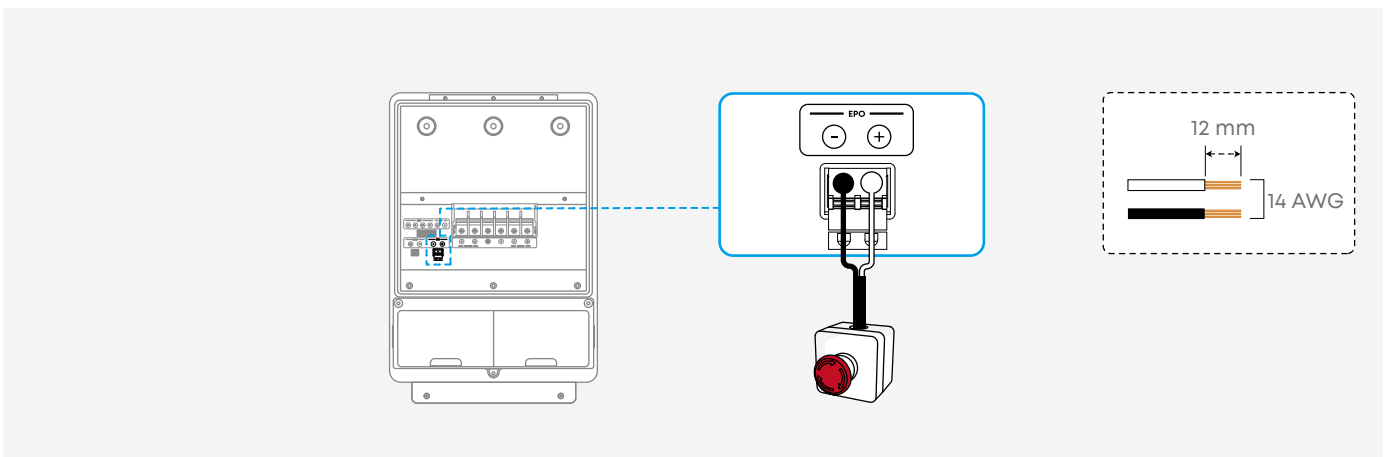
6.3 Connect to the EPO Device

In accordance with local electrical codes, connect the inlet box to an Emergency Power Off (EPO) device to manually trigger a rapid system shutdown.



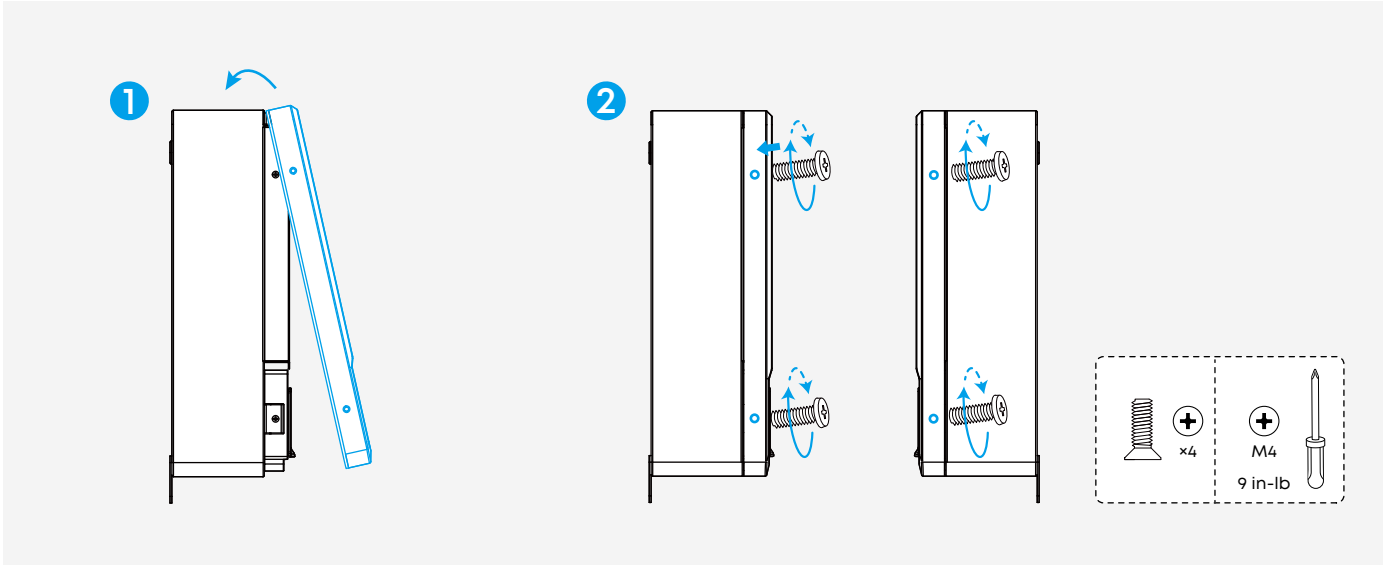
- Install the EPO device in a readily accessible external location. If the inlet box is installed in a garage, place the EPO device outside.
- The supported EPO device must meet the following specifications:
 - NC contact x1
 - $\geq 30\text{VDC} / 1\text{A}$

Connect the EPO device to the EPO terminals on the inlet box.



6.4 Secure the Panel Cover

Attach the panel cover to the inlet box.



7. Specifications

Specifications are subject to change without notice.

Model	AS211
On-Grid Port	
Rated Voltage	120 / 240 VAC (Split Phase)
Rated Frequency	60Hz
Maximum Continuous Current	100A
Backup Port	
Rated Voltage	120 / 240 VAC (Split Phase)
Rated Frequency	60Hz
Maximum Continuous Current	100A
Others	
Mounting Option	Wall Mount
Dimensions (W × H × D)	16.5 × 11 × 5.2 in (418 × 280 × 131 mm)
Weight	14.3 lbs (6.5 kg)
Enclosure Type	NEMA Type 3R
Operating Temperature	-4 to 131 °F (-20 to 55°C)
Warranty	10 Years Limited
Certification	UL 1741, CSA C22.2 No. 107.1:16, ANSI / CAN / UL 9540, CP65, TSCA, PFAS

8. Safety Information

Read the instructions carefully before installing, using, and maintaining this equipment.

Personal Safety

- Only qualified professionals or trained personnel are allowed to install and maintain the equipment.
- Use appropriate personal protective equipment (PPE) and follow safe electrical work practices.
- Installation personnel need to wear insulating gloves, safety glasses, and rubber-soled shoes. Turn off the main circuit and solar breakers before conducting any setup or maintenance.
- Ensure that circuit breakers of the entire system are off during the wiring process.
- Keep this equipment out of reach of children and pets. Be extra vigilant about potential dangers when children or pets get close to the device.
- Do not disassemble, modify or replace this equipment (including internal and external components). If necessary, contact qualified professionals or customer support for handling.

Operational Safety

- Do not stand, tilt, or sit on the equipment.
- Do not insert hands or foreign objects into the ports or ventilation openings.
- Before connecting the equipment to the compatible power module, make sure the circuit breakers for the entire system are off.
- To ensure electrical safety and extend the service life of electrical appliances, never plug or unplug wires while the power supply is on.
- Make sure to connect live and neutral conductors from the equipment to the main panel.
- When conducting repairs, first turn off the breakers for home loads and backup loads. Then turn off the main circuit breaker. Next, disconnect the on-grid and backup power cables from the inlet box.
- To protect the wires and ensure electrical safety, users need to purchase and install waterproof conduits with appropriate wire lengths.
- After installation, promptly clean up cardboard boxes, foam, plastic, etc.
- Do not connect this equipment with damaged cables. The use of damaged cables may affect the normal operation of the device or lead to potential risks.
- Avoid impacts, falls, drops, or strong vibrations. In case of severe external shock, turn off the power immediately and stop using the equipment. Ensure that the equipment is firmly fixed during transport to avoid vibration and shock.

- Handle this equipment with care to prevent damage from tipping. If the equipment is seriously damaged when tipped over, turn off the power immediately, place the equipment in an open area away from flammable materials or people, and dispose of it appropriately in accordance with local laws and regulations.

Others

- If the equipment accidentally falls into water during use, place it in a safe open area until completely dry. The dry equipment should not be reused and should be handled correctly according to the "Handling" section below. If the equipment catches fire, use fire extinguishers or extinguishing equipment in the following recommended order: water or mist, sand, fire blanket, dry powder, and carbon dioxide fire extinguishers.
- The electromagnetic field generated by this equipment may affect the normal function of medical implants or personal medical equipment, such as pacemakers, cochlear implants, hearing aids, defibrillators, etc. If you are using these medical devices, consult the medical device manufacturer regarding restrictions on the use of relevant devices to ensure a safe distance between this equipment and implanted medical devices (such as pacemakers, cochlear implants, hearing aids, defibrillators, etc.).