

Nebula P11
Quick Start Guide

Scan for Support



NEBULA

App

Warranty
Registration

User Manual

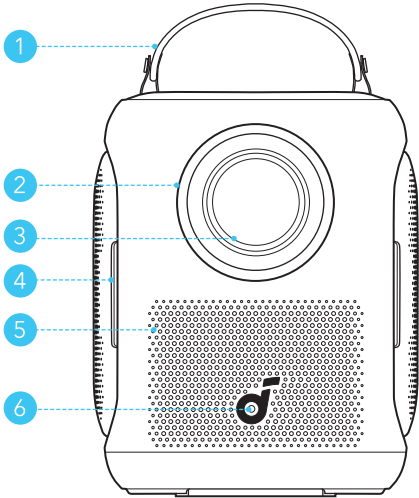
Support Videos

FAQs

Contact Us

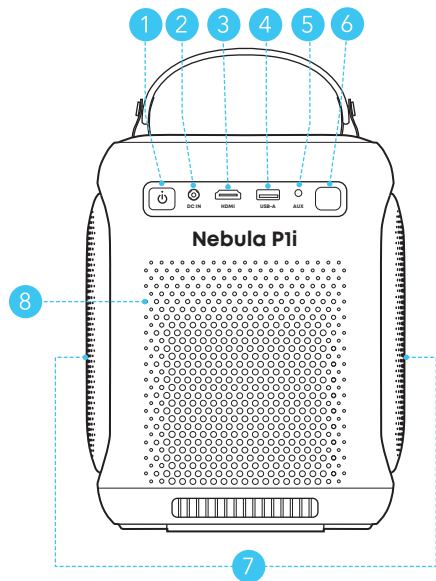
At a Glance

1. Front View



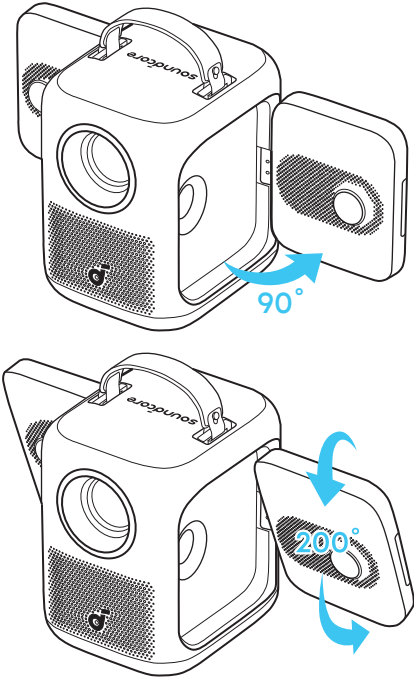
1	Detachable handle	4	Grip slot
2	Lens ring	5	Air ventilation (inlet)
3	Lens assembly	6	Camera

2. Rear View



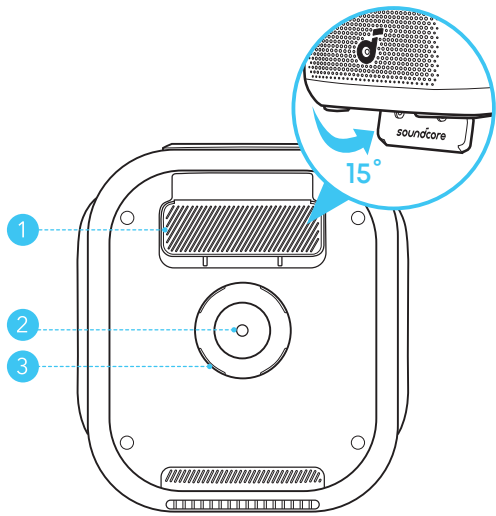
1	Power button (with light)	5	AUX-OUT Port
2	DC-IN	6	Infrared receiver
3	HDMI (ARC) input port	7	Speaker × 2
4	USB-A port	8	Air ventilation (outlet)

3. Side View



1. Speaker × 2
The two speakers can open outward at a 90-degree angle and rotate 200 degrees.
Note: Opening the speakers beyond 90 degrees or rotating the speakers beyond 200 degrees may cause damage.

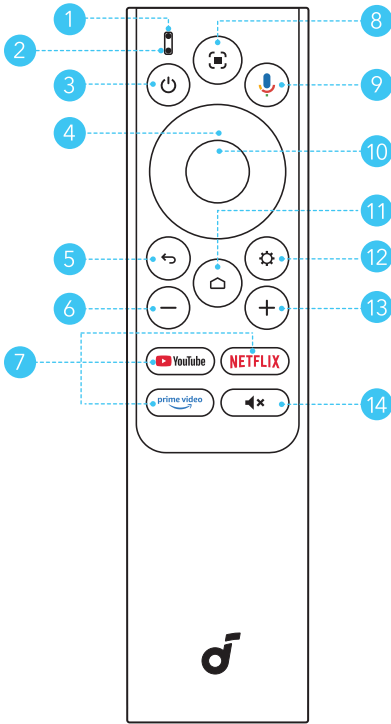
4. Bottom View



1	Adjustable stand (The adjustable stand supports a maximum extension angle of 15°. Exceeding this angle may cause damage.)
2	1/4" tripod stand socket
3	Quick release tripod stand mount

Remote Control

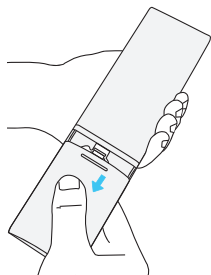
1. Overview



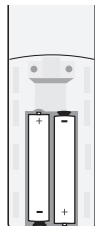
1	Indicator	8	Auto Image Adjustment
2	Microphone	9	Google Assistant
3	Power On / Off / Standby	10	Confirm Selection / Pause / Resume
4	Navigation	11	Menu
5	Return	12	Options
6	Volume Down	13	Volume Up
7	YouTube / Netflix / Prime Video	14	Unmute Sound

2. Prepare the Remote Control

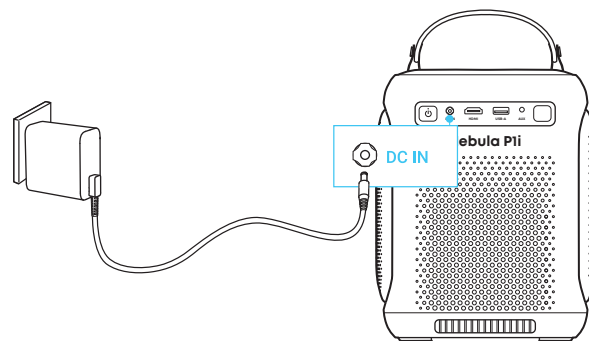
① For first-time use, slide to open the battery compartment and install two AAA batteries.



② To replace the batteries, slide off the battery compartment backplate, insert new batteries (matching the polarity (+/-) as indicated), and close the battery compartment.

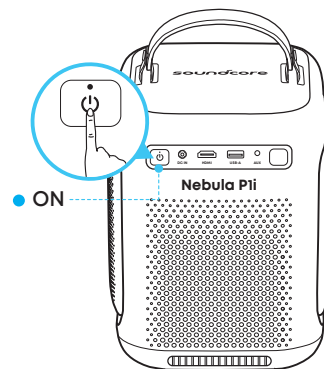


Connect Your Projector



Connect the adapter to the power and attach the DC plug to the projector.

Power On / Off



Power On: Press the power button once.

Before pressing the button to power on the projector, make sure that the power button lights up red. When the projector is powered on, the power button will turn steady white.

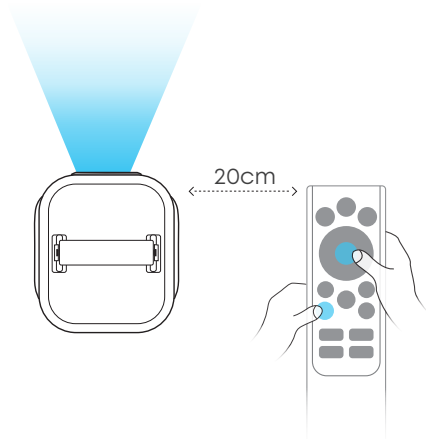
Power Off:

1. Press and hold the power button for 3 seconds (wait for the on-screen prompt).
2. Confirm power off with the remote control or wait 20 seconds for automatic power-off.

Standby Mode: Short-press the power button to enter Standby Mode.

Controlling

Connect the Projector with the Remote Control



After powering on the projector, follow the on-screen instructions to pair your remote control with the projector.

Press and hold the confirm and volume down buttons for several seconds until the prompt of successful Bluetooth connection appears.

Basic Setup

For first-time use, follow the on-screen display instructions to complete the basic setup. Adjust settings in the projector's **Settings** menu if necessary.

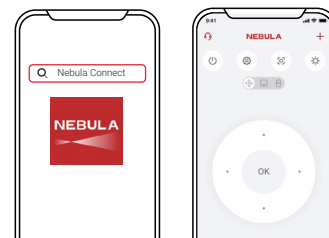
08

Control the Projector with the Nebula Connect App



Q Nebula Connect

Download the **NEBULA Connect** app to control the projector using a smartphone.



Easily control your projector via the Nebula Connect app on your smartphone.

Network Settings

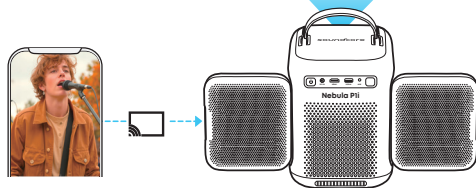
Use the following methods to connect the projector to a wireless network.

1. Press the Settings button on the remote, and turn on Wi-Fi.
2. Open the Nebula Connect app, select your projector model, then go to Settings and turn on Wi-Fi.

Google Cast

You can wirelessly cast photos, videos, and music from your phone or tablet to your projector.

1. Make sure the projector and your phone are connected to the same wireless network.
2. Play a video on your streaming app and then tap the cast icon on the screen.
3. Select **"soundcore Nebula Pi"** to play the content on your projector.



Certain content may be unavailable due to copyright restrictions. In this case, you can install the app on your projector to stream content.

Wireless Screen Mirroring

To enable screen mirroring, make sure the projector and your phone are connected to the same wireless network.


• For iOS devices:

1. Download and open the Nebula Cast app on your device.
2. Open your device's control center and tap **"Screen Mirroring."**
3. Click on **"soundcore Nebula Pli"** in the device list.

• For Android devices:

1. Open the Google Home app and select **"soundcore Nebula Pli."**
2. Tap "Cast My Screen" to start casting.

• Streaming services:

1. Enter the streaming service app and tap the cast icon or .
2. Click on the name of your Nebula device in the device list: **soundcore Nebula Pli**.



Copyrighted and DRM-protected content from streaming services like Netflix and Disney+ cannot be mirrored.

Bluetooth Speaker Mode

The projector can also be used as a Bluetooth speaker.

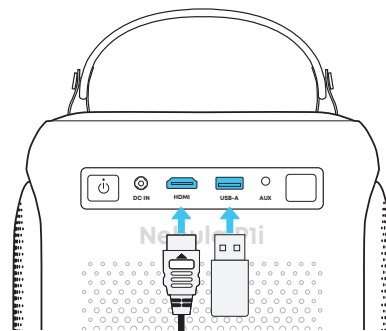
1. Go to **All Settings > Display & Sound > Sound > Turn on the Bluetooth Speaker Mode** to switch your Nebula projector from Projector Mode to Bluetooth Speaker Mode. Alternatively, you can go to **Dashboard > Sound > Turn on Bluetooth Speaker Mode**.
2. Enable Bluetooth on your smartphone and select **soundcore Nebula Pli**.

Pairing Remote and Bluetooth Accessories

You can connect external Bluetooth accessories to your projector, including speakers, headphones, and keyboards.

1. Go to **Settings > Remote & Accessories > Pair Accessory**.
2. Put your Remote or Bluetooth accessory into pairing mode.
3. Select the device that you want to connect to.

Playing Video from HDMI / USB Devices



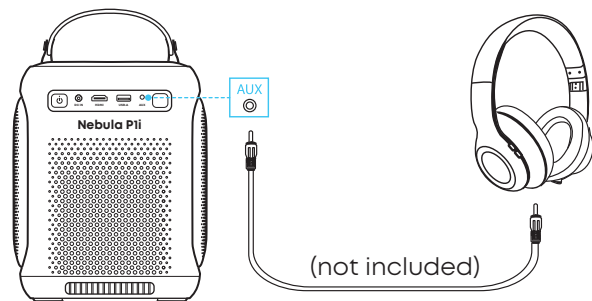
The projector supports connections with various HDMI playback devices such as a TV sticks, TV boxes, DVD players, set-top box (STB), gaming consoles, or other devices.

With this projector, you can also enjoy music, video, and pictures that are stored on a USB storage device (not included).

When using a USB flash drive, ensure that the USB drive is in FAT32 format or NTFS format (exFat format not supported).

Play Through External Audio Devices

Connect to external sound output devices, including headphones and speakers.



Important Safety Instructions

- Unless specifically indicated as safe to do so in the user guide or instruction manual, do not use this device in environments that exceed the recommended low or high temperatures.
- Unless specifically indicated as safe to do so in the user guide or instruction manual, avoid exposing your device to direct sunlight or excessively humid environments.
- The suitable operating temperature for the projector is 0°C to 35°C (32°F to 95°F).
- When powering the equipment, please place it in an environment with a normal room temperature and good ventilation.
- The power supply should be installed near the equipment. For pluggable equipment, the socket-outlet must be easily accessible.
- Before making or changing any connections, ensure that all devices are disconnected from the power outlet.
- Potentially hazardous optical radiation emitted from this product may be harmful to the eyes. Do not stare at the operating beam.
- Do not open the enclosure of the product. If the enclosure is damaged, do not use the product.
- Potential hazards may exist during lamp or product servicing.
- Service must be performed only by authorized and trained service personnel.
- Do not use the equipment in any way other than described herein, to avoid personal injury or property damage.

- Users should comply with the laws and regulations of the relevant countries and regions where the equipment is located (used), abide by professional ethics, fulfill safety obligations, and strictly prohibit the use of our products or equipment for any illegal purposes. Our company will not be responsible for any legal liability of violators under any circumstances.

Warning:

- Replacement of a battery with an incorrect type that can defeat a safeguard;
- Disposal of a battery into fire or a hot oven, or mechanically crushing or cutting of a battery, that can result in an explosion;
- Leaving a battery in an extremely high temperature surrounding environment that can result in an explosion or the leakage of flammable liquid or gas;
- A battery subjected to extremely low air pressure that may result in an explosion or the leakage of flammable liquid or gas.

Attention:

- Remplacement d'une batterie par un type incorrect pouvant supprimer une protection;
- Mise au rebut d'une batterie dans un feu ou dans un four chaud, ou écrasement mécanique ou coupure d'une batterie, susceptible de provoquer une explosion;
- Maintien d'une batterie dans un environnement à très haute température pouvant provoquer une explosion ou la fuite de liquide ou de gaz inflammables;
- Batterie soumise à une pression de l'air extrêmement faible pouvant provoquer une explosion ou la fuite de liquide ou de gaz inflammables.



CAUTION: RISK OF EXPLOSION IF BATTERY IS REPLACED BY AN INCORRECT TYPE. DISPOSE OF USED BATTERIES ACCORDING TO THE INSTRUCTIONS.



ATTENTION RISQUE D'EXPLOSION SI LA BATTERIE EST REMPLACÉE PAR UN TYPE INCORRECT. ÉLIMINER LES BATTERIES USÉES SELON LES INSTRUCTIONS.

Notice (United States of America) FCC Statement

This device complies with Part 15 of the FCC Rules. Operation is subject to the following two conditions: (1) this device may not cause harmful interference, and (2) this device must accept any interference received, including interference that may cause undesired operation.

Warning: Changes or modifications not expressly approved by the party responsible for compliance could void the user's authority to operate the equipment.

Note: This equipment has been tested and found to comply with the limits for a Class B digital device, pursuant to Part 15 of the FCC Rules. These limits are designed to provide reasonable protection against harmful interference in a residential installation.

This equipment generates, uses, and can radiate radio frequency energy and, if not installed and used in accordance with the instructions, may cause harmful interference to radio communications. However, there is no guarantee

that interference will not occur in a particular installation. If this equipment does cause harmful interference to radio or television reception, which can be determined by turning the equipment off and on, the user is encouraged to try to correct the interference by one or more of the following measures: (1) Reorient or relocate the receiving antenna. (2) Increase the separation between the equipment and receiver. (3) Connect the equipment into an outlet on a circuit different from that to which the receiver is connected. (4) Consult the dealer or an experienced radio/TV technician for help.

FCC Radio Frequency Exposure Statement

The device has been evaluated to meet general RF exposure requirements. The device can be used in fixed/mobile exposure condition. The min separation distance is 20cm.

The following importer is the responsible party

Company Name: Fantasia Trading LLC

Address: 5350 Ontario Mills Pkwy, Suite 100, Ontario, CA 91764

Telephone: 1-800-988-7973

5150~5350 MHz can be used indoors only.



This product complies with the radio interference requirements of the European Community.

Declaration of Conformity

Hereby, Anker Innovations Limited declares that this device is in compliance with the essential requirements and other relevant provisions of Directive 2014/53/EU. For the declaration of conformity, visit the Web <https://support.soundcore.com/s/articleRecommend?type=Download&secondType=doc>.

Statement of Compliance

Hereby, Anker Innovations Limited declares that this device is in compliance with The Product Security and Telecommunications Infrastructure (Security Requirements for Relevant Connectable Products) Regulations 2023. For the Statement of Compliance, visit the website <https://uk.soundcore.com/pages/psti-related>.

RF exposure information

The Maximum Permissible Exposure (MPE) level has been calculated based on a distance of d=20 cm between the device and the human body. To maintain compliance with RF exposure requirement, use product that maintain a 20cm distance between the device and human body.

Frequency bands and power as below

Bands	Operation Frequency	Max. EIRP		
		soundcore Nebula Pli	soundcore Surround Speaker	Remote Control
Bluetooth	2402~2480 MHz	14.59	/	3.63
WIFI 2.4G	2412~2472 MHz	17.56	/	/
WIFI 5G	5150~5250 MHz	19.05	/	/
	5250~5350 MHz	19.21	/	/
	5470~5725 MHz	19.36	/	/
	5725~5850 MHz	13.29	/	/

5150~5350 MHz can be used indoor only.

	AT	BE	BG	HR	CY	CZ	DK
	EE	FI	FR	DE	EL	HU	IE
	IT	LV	LT	LU	MT	NL	PL
	PT	RO	SK	SI	ES	SE	UK

The following importer is the responsible party (contact for EU matters):

Anker Innovations Deutschland GmbH
Prinzenallee 15, 40549 Düsseldorf, Germany

ANKER TECHNOLOGY (UK) LTD
39 Clarendon Road, Watford, Hertfordshire, England, WD17 1JA, United Kingdom



This product is designed and manufactured with high quality materials and components, which can be recycled and reused.



This symbol means the product must not be discarded as household waste, and should be delivered to an appropriate collection facility for recycling. Proper disposal and recycling helps protect natural resources, human health and the environment. For more information on disposal and recycling of this product, contact your local municipality, disposal service, or the shop where you bought this product.

Notice (Canada)

IC Statement

This device complies with Industry Canada licence-exempt RSS standard(s). Operation is subject to the following two conditions:

(1) this device may not cause interference, and
(2) this device must accept any interference, including interference that may cause undesired operation of the device.

Le présent appareil est conforme aux CNR d'Industrie Canada applicables

aux appareils radio exempts de licence. L'exploitation est autorisée aux deux conditions suivantes:

- (1) l'appareil ne doit pas produire de brouillage, et
- (2) l'utilisateur de l'appareil doit accepter tout brouillage radioélectrique subi, même si le brouillage est susceptible d'en compromettre le fonctionnement."

This Class B digital apparatus complies with Canadian ICES (B).

Cet appareil numérique de la classe B est conforme à la norme NMB (B) du Canada.

IC RF Statement

When using the product, maintain a distance of 20cm from the body to ensure compliance with RF exposure requirements.

Lors de l'utilisation du produit, maintenez une distance de 20 cm du corps afin de vous conformer aux exigences en matière d'exposition RF.

5150~5250 MHz can be used indoors only.

5150~5250 MHz peut être utilisé à l'intérieur uniquement.



The Bluetooth® word mark and logos are registered trademarks owned by the Bluetooth SIG, Inc. and any use of such marks by Anker Innovations Limited is under license. Other trademarks and trade names are those of their respective owners.



The Adopted Trademarks HDMI, HDMI High-Definition Multimedia Interface, and the HDMI Logo are trademarks or registered trademarks of HDMI Licensing Administrator, Inc. in the United States and other countries.



Manufactured under license from Dolby Laboratories. Dolby, Dolby Audio, Pro Logic, and the double-D symbol are trademarks of Dolby Laboratories.



Points de collecte sur
www.quefairedemesdechets.fr



PAP 22
Raccolta Carta



service@soundcore.com

uk.support@soundcore.com (UK)

ie.support@soundcore.com (Ireland)

support.india@anker.com (India)

support.mea@anker.com (Middle East and Africa)

support@anker.com (日本)

support.kr@anker.com (한국)

ced-cn@anker.com (中国)



+1 (800) 988-7973 (US/Canada)

+44 (0) 1604 936 200 (UK)

+49 (0) 69 9579 7960 (DE)

03 4455 7823 (日本)

+86 400 0550 036 (中国)

+82 1666-8470 (한국)

+971 8000 320 817 (UAE)

+966 8008 500 030 (KSA)

+965 22069086 (Kuwait)

+20 8000 000 826 (Egypt)

+90 (850) 460 1414 (Türkiye)

+91 8000 504 414 (India)

Anker Innovations Limited
Unit 56, 8th Floor, Tower 2, Admiralty Centre, 18 Harcourt Road, Hong Kong

Model: D2200