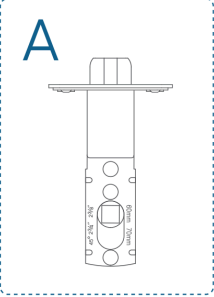
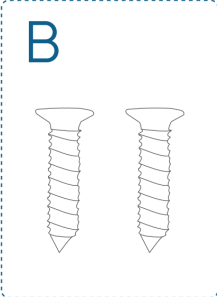
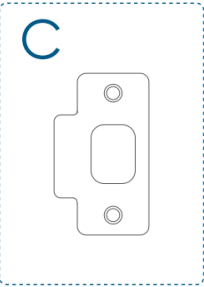
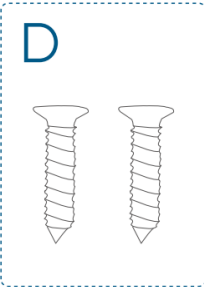
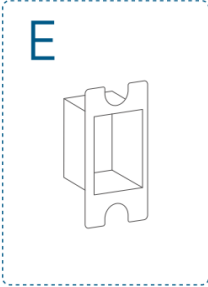


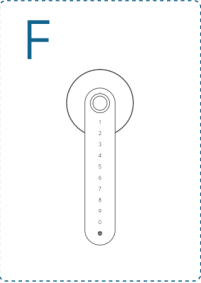
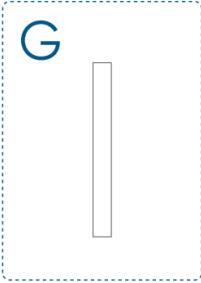
What's in the Box

For Step 1: Latch & Strike Plate Installation



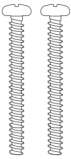

<div>A</div> 	<div>B</div> 
Latch	Latch Screws

<div>C</div> 	<div>D</div> 	<div>E</div> 
Strike Plate	Strike Plate Screws	Plastic Seperator (Optional)

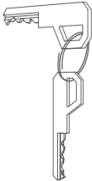


For Step 2: Exterior Keypad Installation

<div>F</div> 	<div>G</div> 
Exterior Keypad	Spindle


For Step 3: Interior Assembly Installation

<div>H</div> <div></div>	<div>I</div> <div></div>	<div>J</div> <div></div>	<div>K</div> <div></div>
Interior Assembly	AA Batteries	Screw	Rubber Plug (pre-installed in the interior assembly)

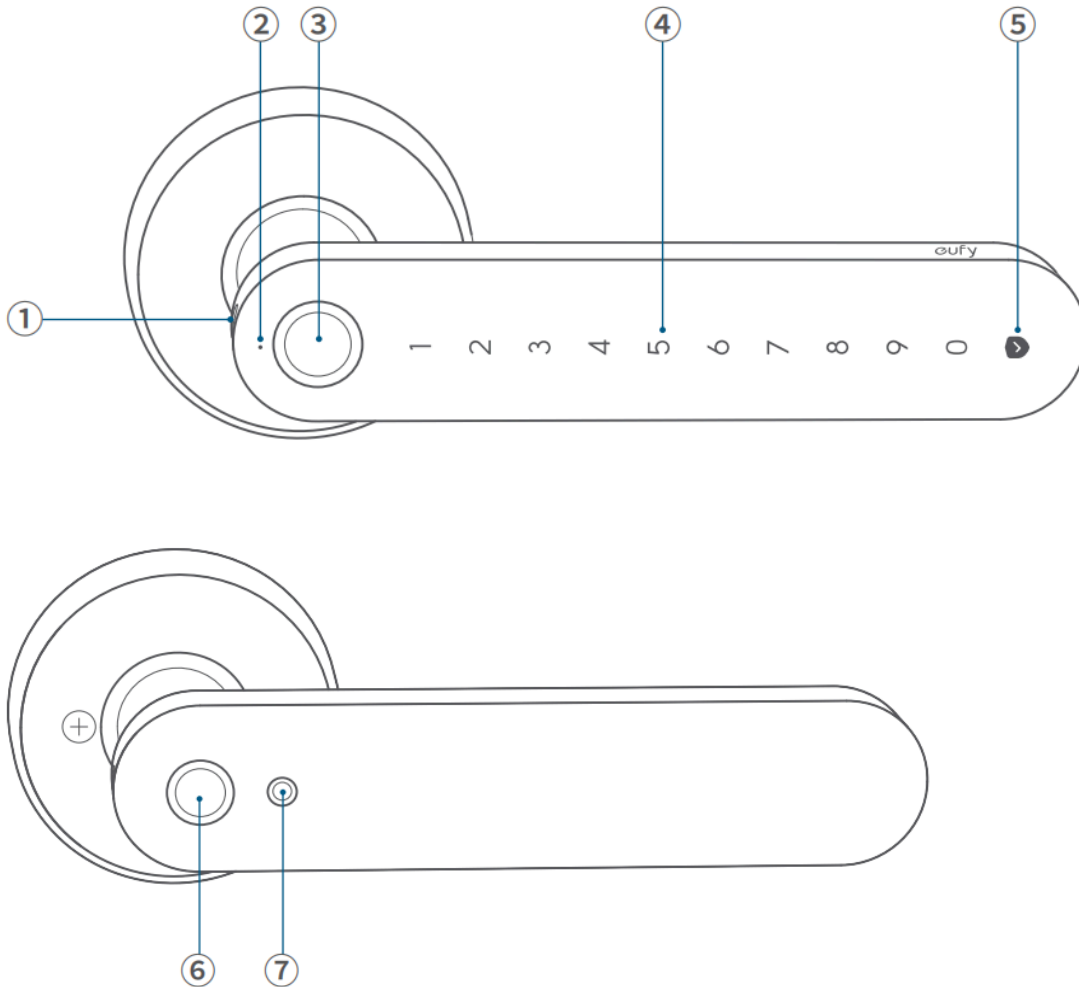
Others

<div></div>	<div></div>	<div></div>
Keys	Safety Card	Quick Start Guide

Tools You Will Need

<div></div>
Phillips Screwdriver

At a Glance

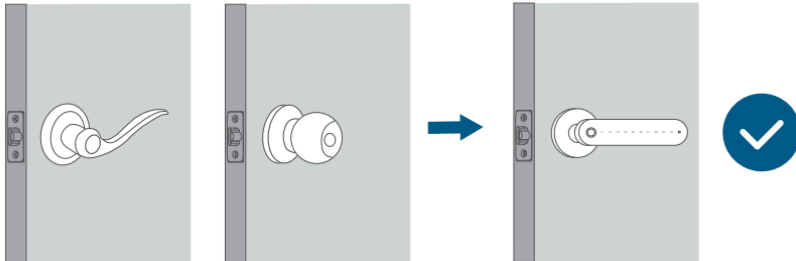


1. USB-C Emergency Charging Port
 - Charge the lock when the battery runs out.
2. LED Indicator
 - Blue: Unlocked
 - Orange: Locked
 - Steady blue for 2s, then off: Paired successfully
 - Steady white for 2s, then off: Reset successfully
 - Slow blinking red and blue: OTA updating
3. Fingerprint Button
4. Keypad
5. Confirm Button
 - Red: Low battery
 - Green: Passage Mode enabled
 - Yellow: Privacy Mode enabled
 - White: Others
6. Multi-function Button
 - Single Press: Lock (by default)
 - Double Press: Privacy Mode (enable in eufy app)
 - Long Press (>3s): Passage Mode (enable in eufy app)
7. Set / Reset Button
 - Pair: Long press for 2 seconds.
 - Reset: Long press for 10 seconds, then press the confirm button on the exterior assembly.

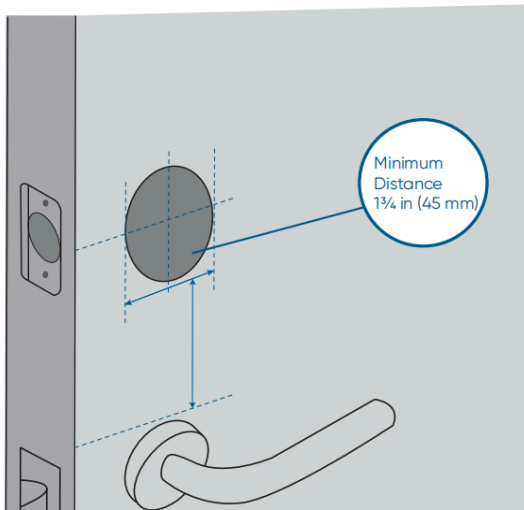
Before Installation

1. Prepare the Door

Choose an installation position based on the location of the existing lock (if any).

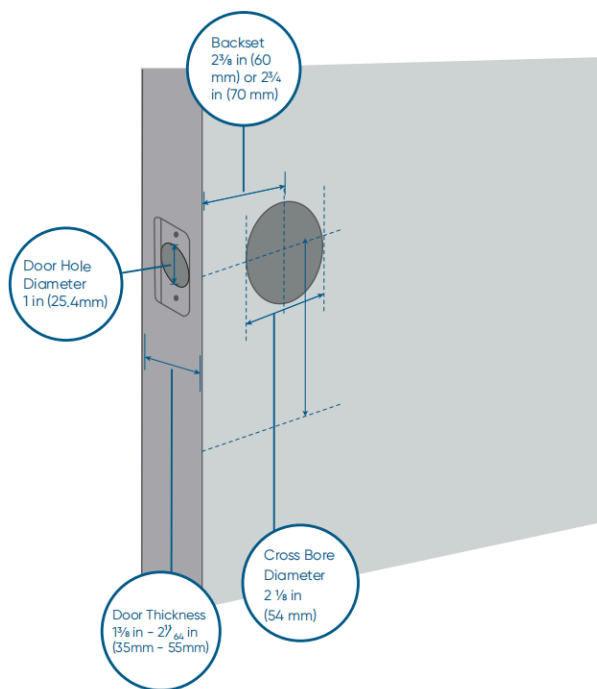


Remove the existing lock to avoid installation issues.



2. Check the Door Hole

If the hole does not match the illustration, use the template to drill new holes.

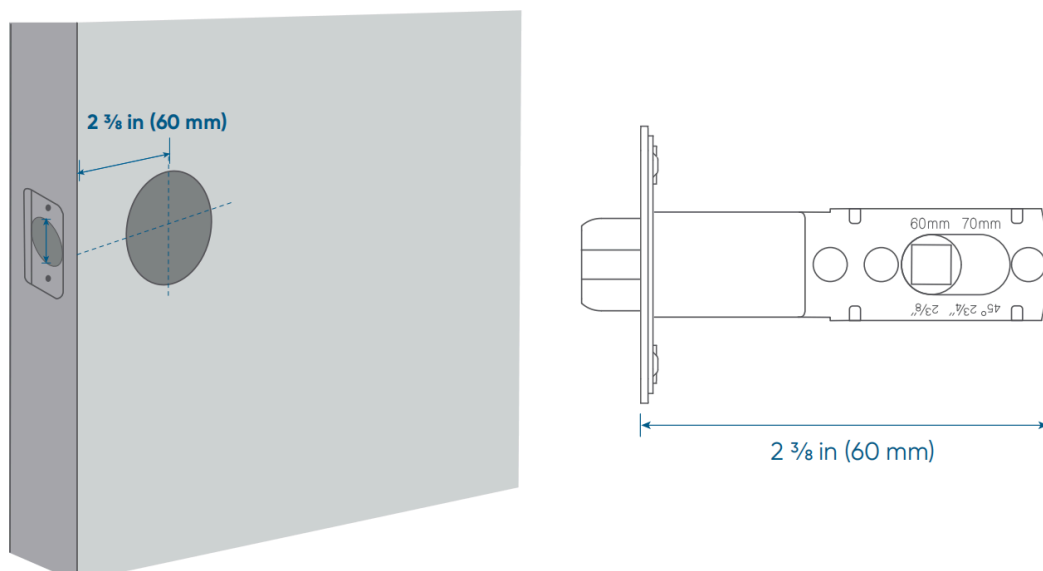


Install Your Smart Lock

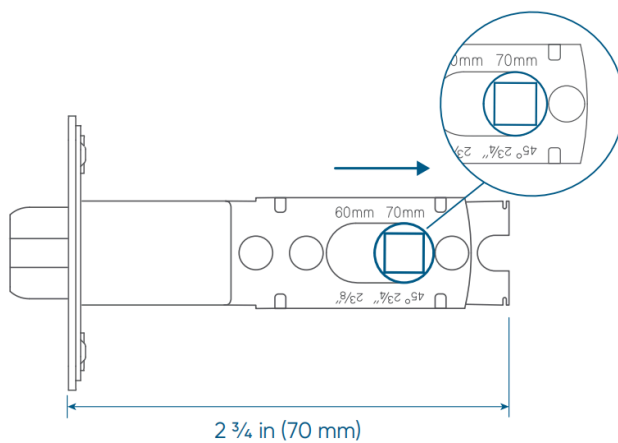
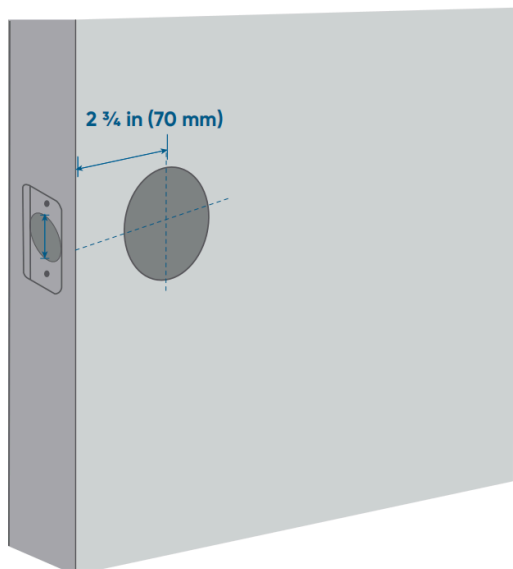
Step 1. Install Latch & Strike Plate

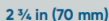
1. Measure the Backset

If the backset is 2 ³/₈ in (60 mm), the deadbolt is ready to use without adjustment.



If the backset is 2 ³/₄ in (70 mm), slide the knob towards the 2 ³/₄ position.





2. Insert the Latch

Keep the spindle hole vertical, and make sure the latch bevel hits the strike plate first when closing.



B

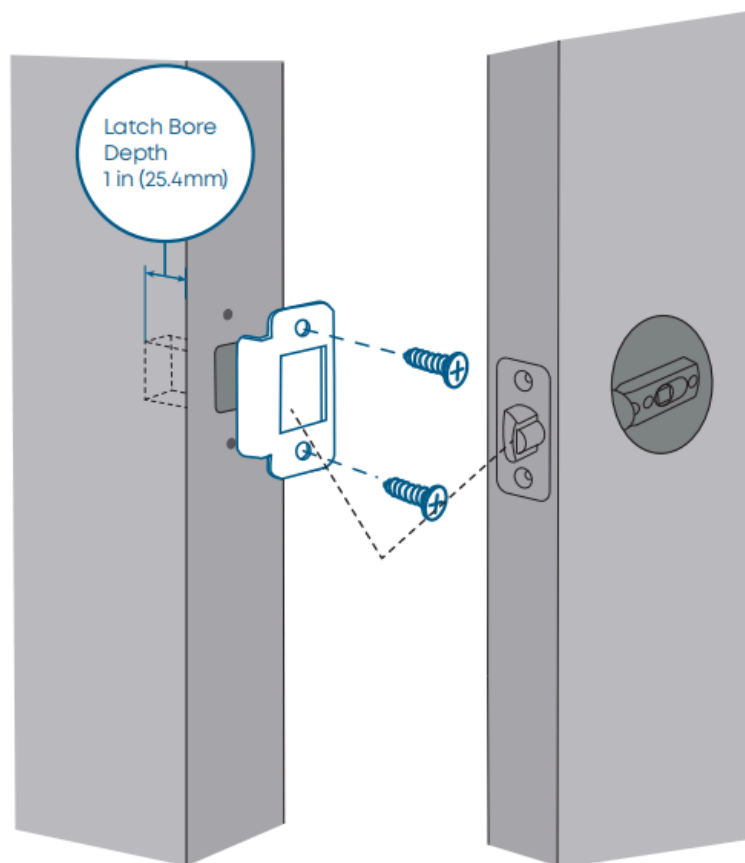
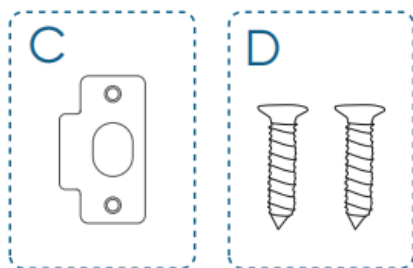
If your door opens outward:

If your door opens inward:

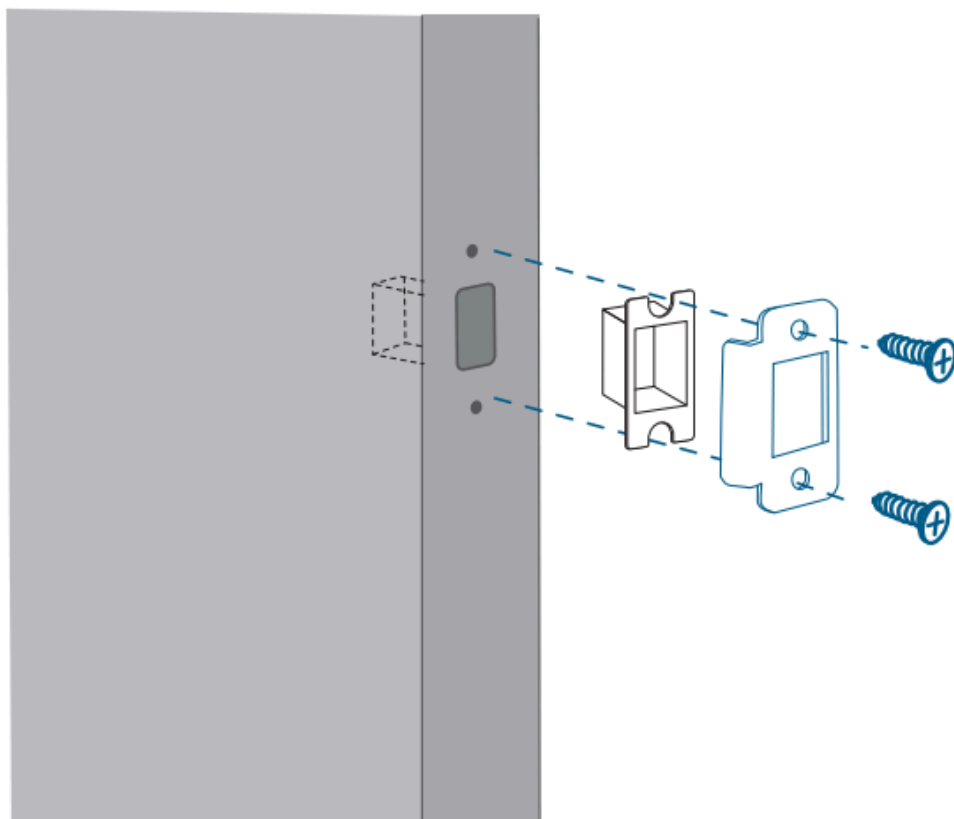
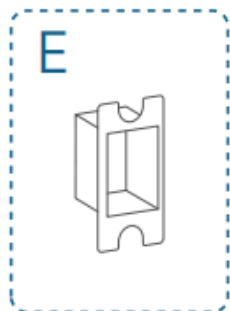
Outside

3. Install the Strike Plate

Ensure the depth of the latch bore is at least 1 in (25.4 mm).



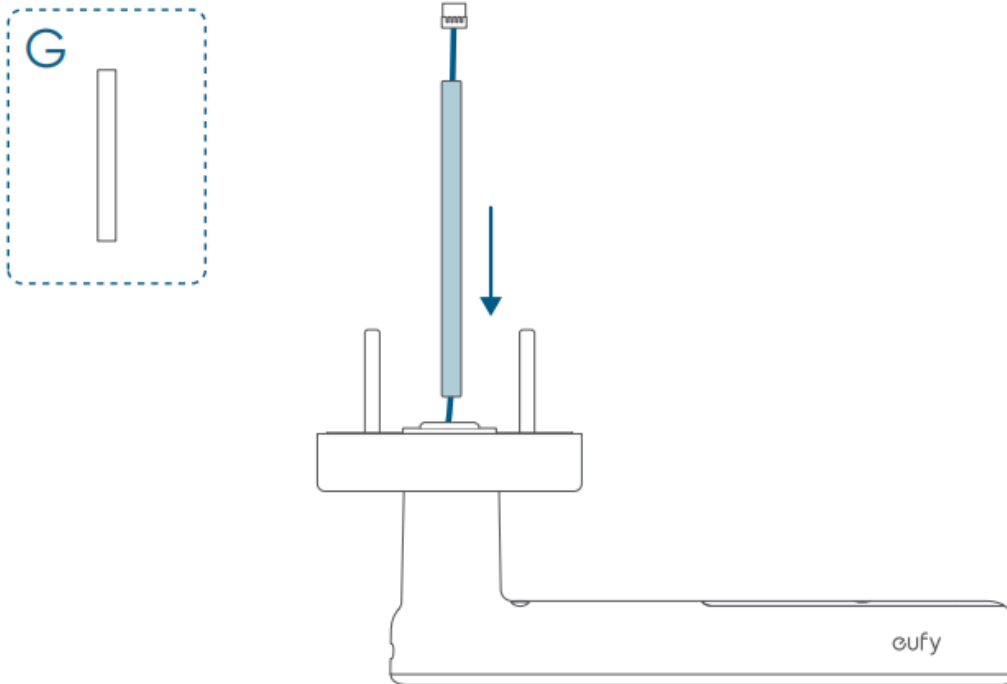
💡 If the latch bore is too deep, you may install the provided plastic separator.



Step 2. Install Exterior Keypad

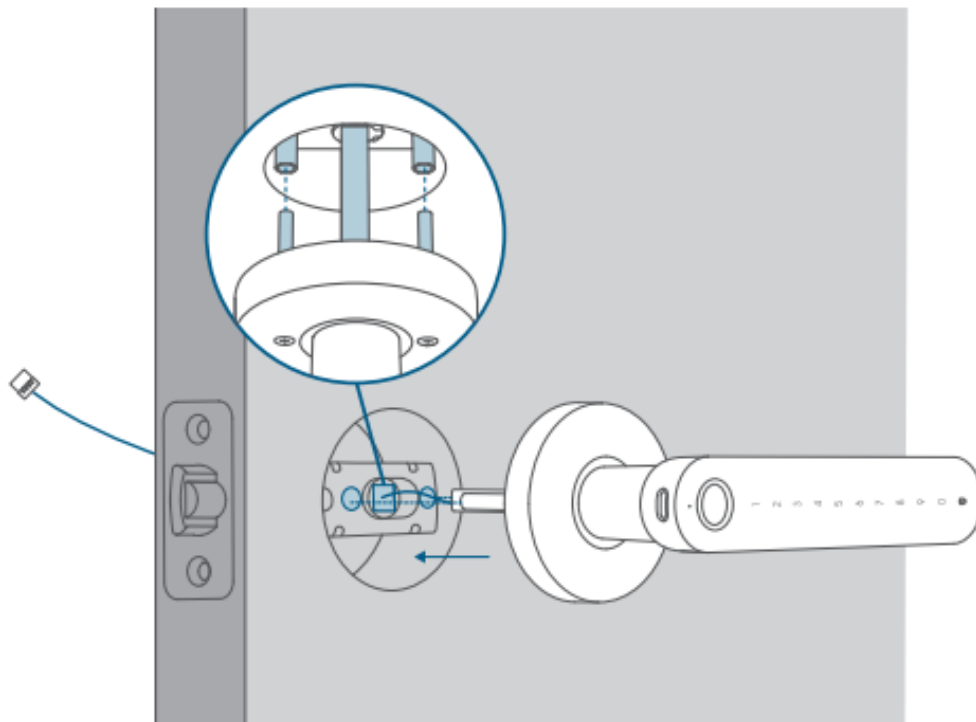
1. Install the Spindle

Run the cable through the spindle, and secure the spindle in place.



2. Insert the Exterior Keypad

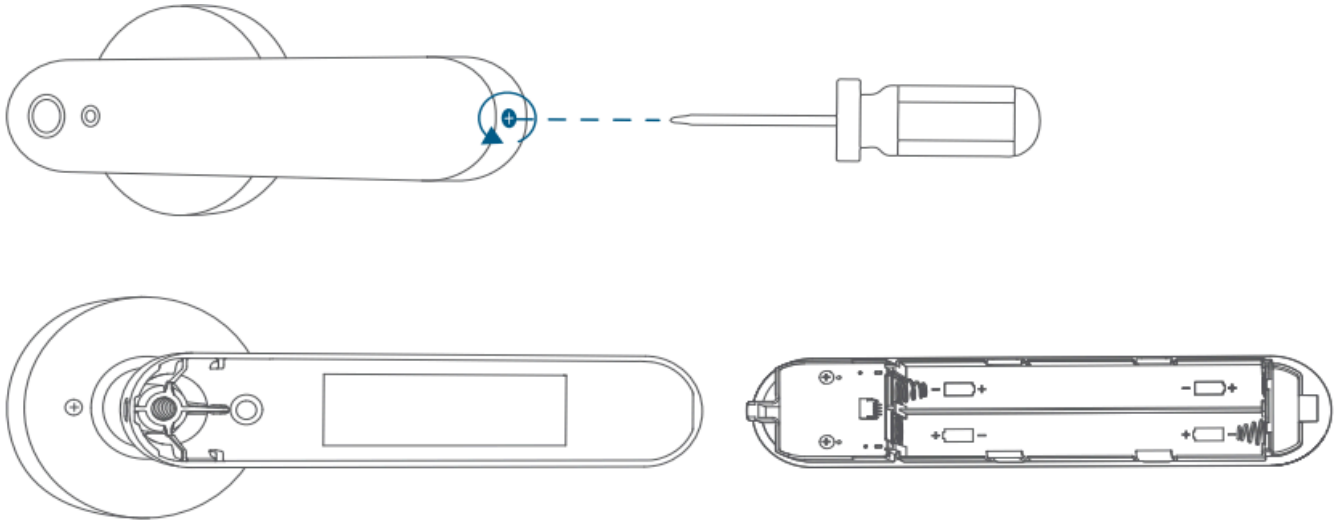
Align the spindle and screw posts with the holes in the latch, and insert the exterior keypad. Make sure the spindle passes through the center hole.



Step 3. Install Interior Assembly

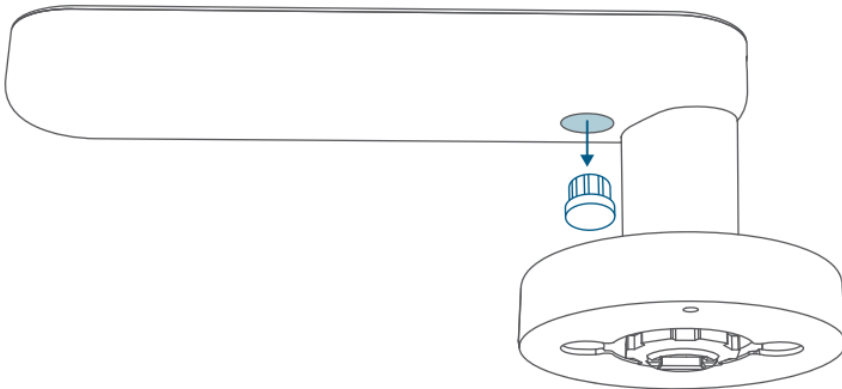
1. Install the Interior Assembly

- ① Remove the battery cover.

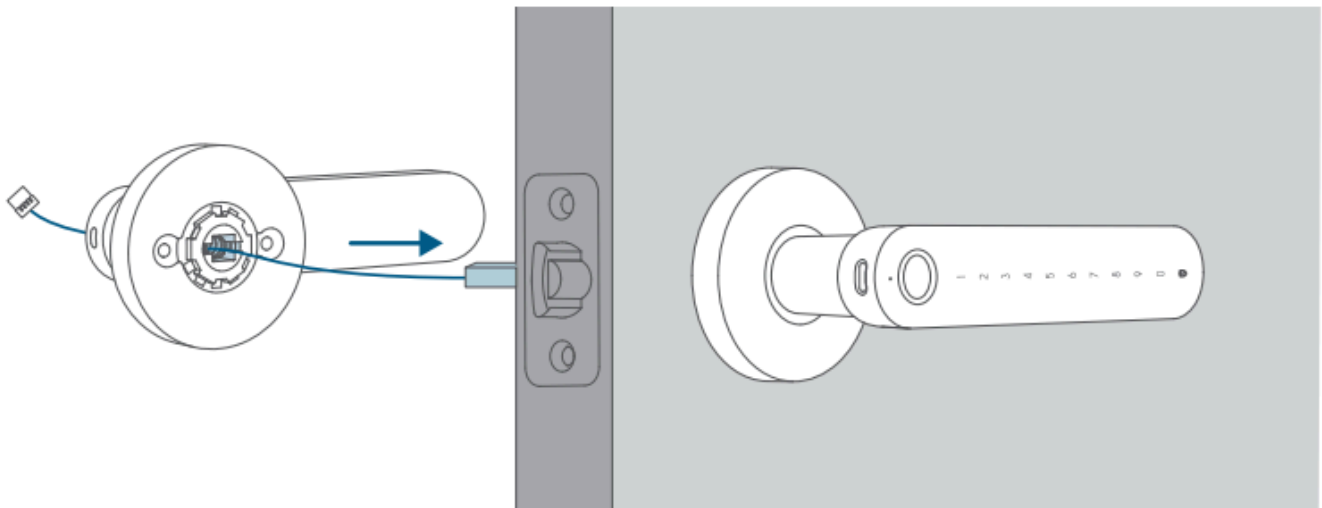


- ② Remove the rubber plug.

💡 The opening is for screw installation. Do not discard the rubber plug; reinstall it once the screws are in place.

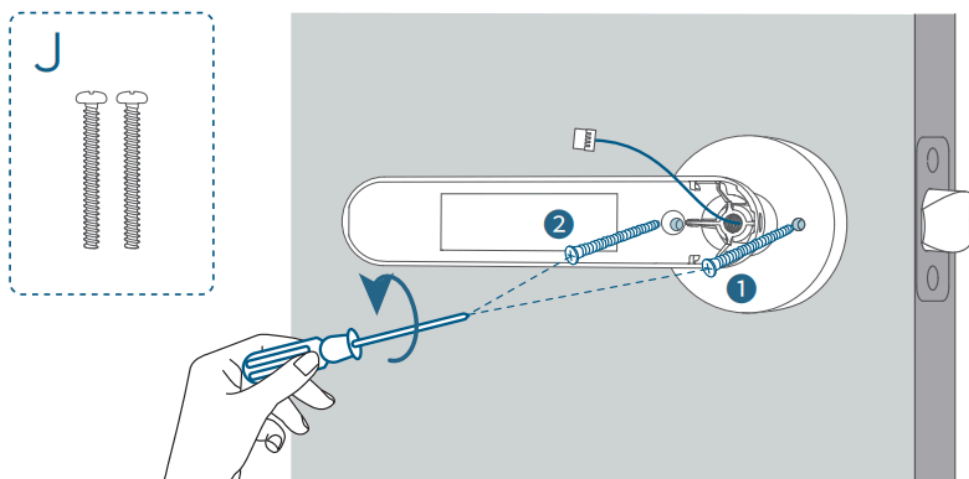


- ② Run the cable through the central hole in the interior assembly.

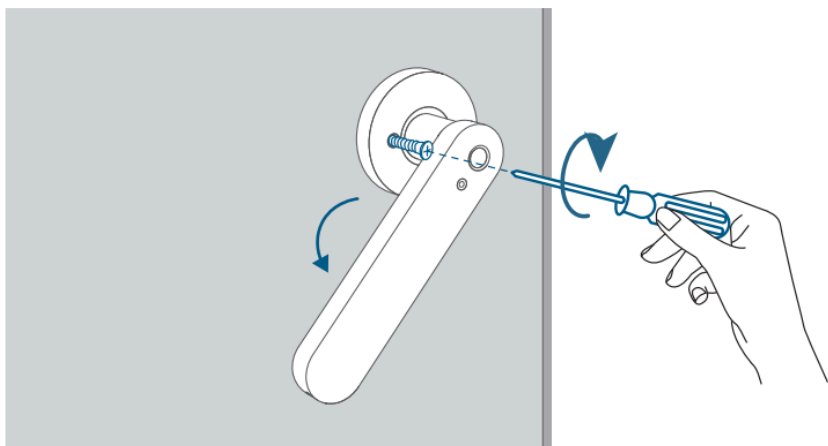


③ Tighten the screws.

Tighten the screw on the outer side first, then use a screwdriver through the hole in the interior assembly to secure the screw on the inner side.

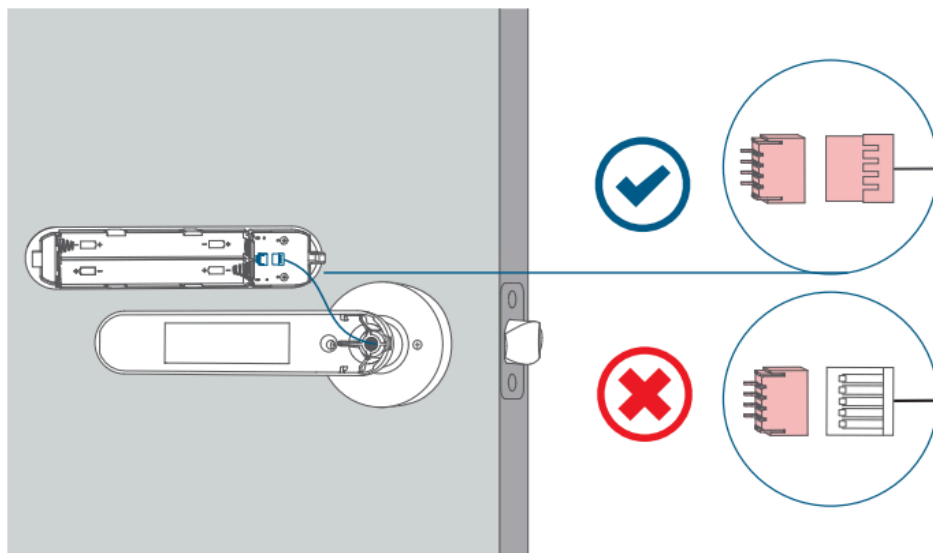


If your screwdriver cannot pass through the hole, press down on the handle to tighten the screw.

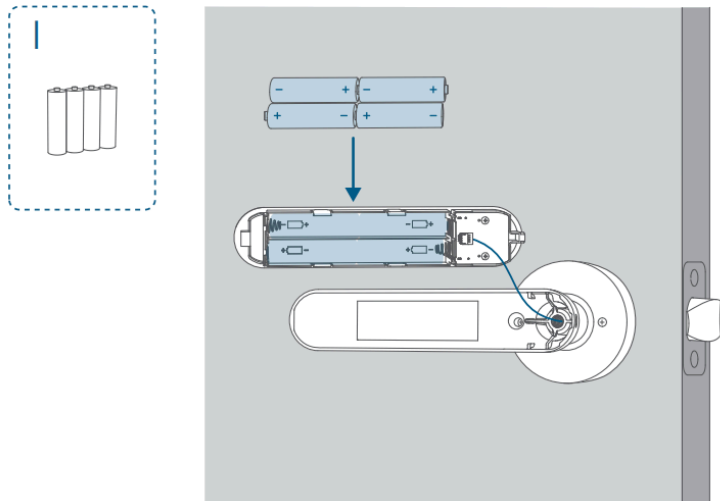


2. Plug the Cable & Install the Batteries

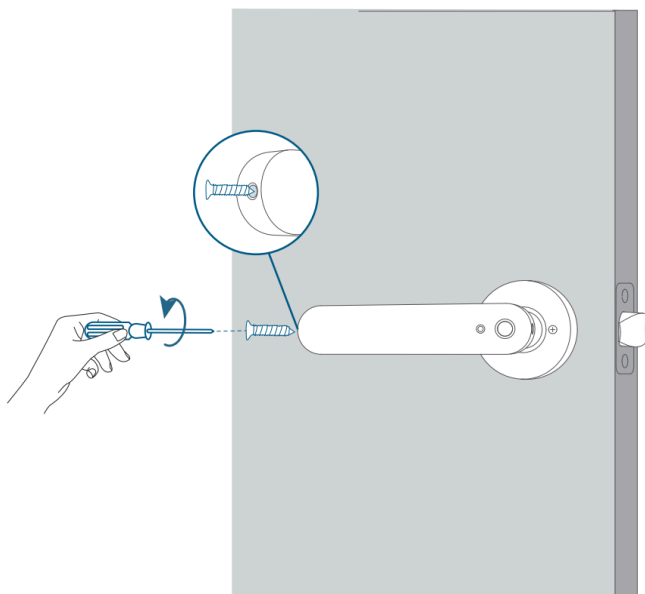
① Plug the cable into the socket on the battery cover.



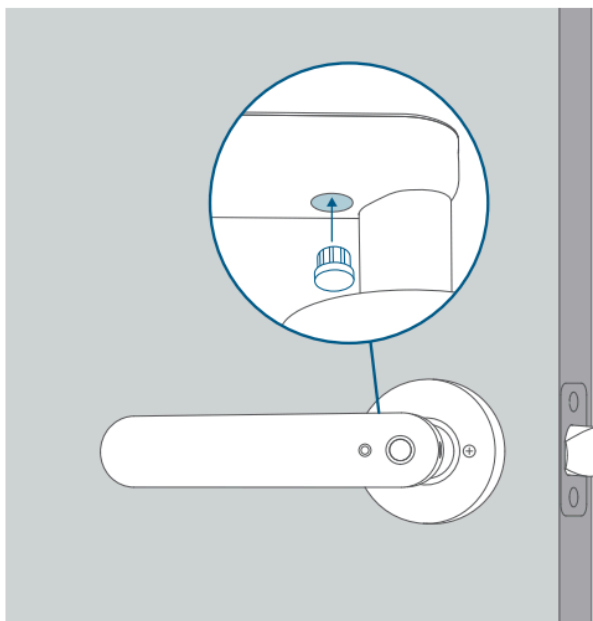
② Install the included AA batteries with the correct polarity.



③ Place back the cover, and tighten the screw.



④ Insert the silicone plug.



After Installation

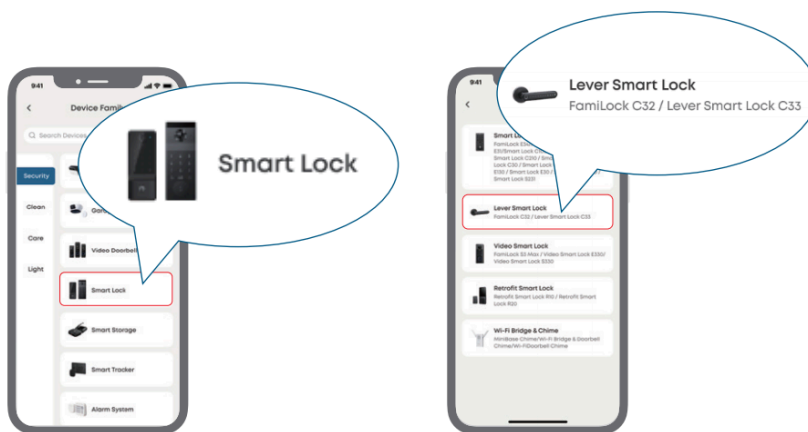
1. Download eufy App

Download and install the latest version of the [eufy app](#), then sign in or create an account.

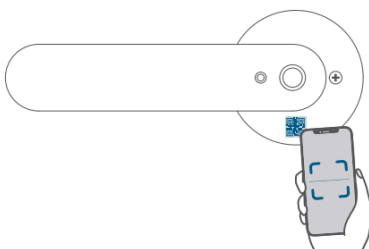
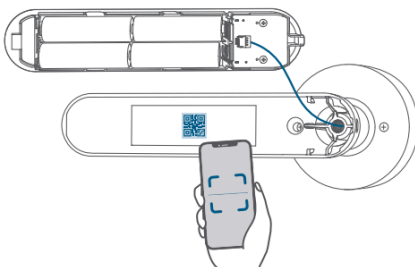


2. Add Smart Lock

Follow the in-app instructions to add the device and complete the setup.



Scan the QR code to add the device.



Other Information

Port 1: Wi-Fi (2.4GHz)

1. Upon initial startup or following a factory reset, the device enters BLE pairing mode.
2. During standard operation, the device automatically connects to the router using the saved configuration.
3. To reconfigure the network, please navigate to the following path in the App: Settings >> General >> Internet Connection >> Change Wi-Fi.
4. The device connects to the home network via standard Wi-Fi (2.4GHz) for data transmission and cloud interaction. Supported encryption standard: WPA2.

Port 2: BLE

BLE functionality is temporarily activated only upon initial startup or following a factory reset to facilitate network provisioning. This function is automatically disabled once the network connection is established and remains inactive during standard operation or offline status.