

Disclaimer

What's in the Box

Product Overview

LED Indicator

Power On

Using the App

Download the Anker App

Add the Smart Plug

Select the Scene

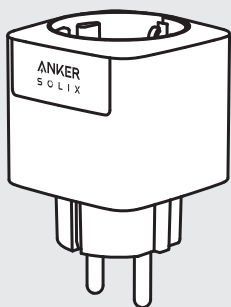
Initialization Settings

Specification

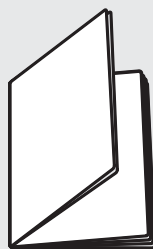
Disclaimer

Read this user manual carefully before using the product to ensure that you completely understand the product and can correctly use it. After reading this user manual, keep it properly for future reference. Improper use of this product may cause serious injury to yourself or others, or cause product damage and property loss. Once you use this product, it is deemed that you understand, approve and accept all the terms and content in this document. Anker SOLIX is not liable for any loss caused by the user's failure to use this product in compliance with this user manual. In compliance with laws and regulations, Anker SOLIX reserves the right to final interpretation of this document and all documents related to this product. This document is subject to changes (updates, revisions, or termination) without prior notice. Please visit Anker SOLIX website to obtain the latest product information.

What's in the Box

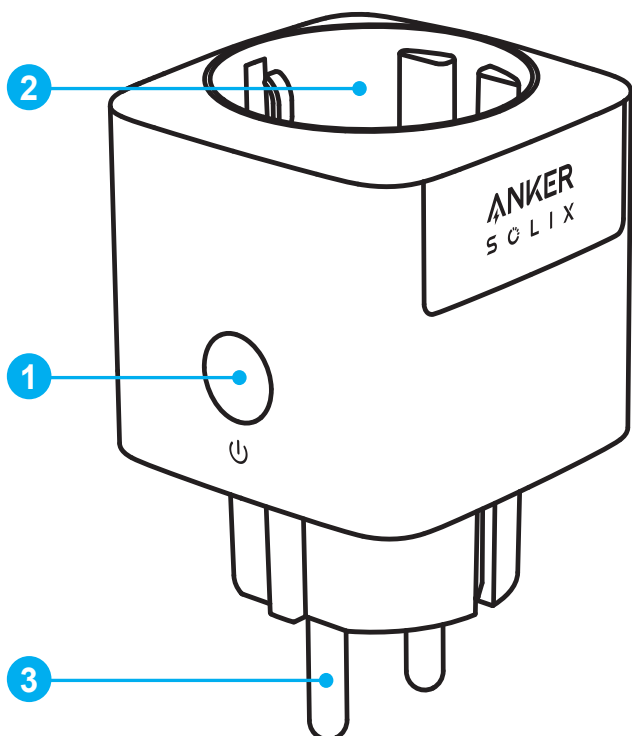


Anker SOLIX Smart Plug Gen 2



Important Safety Instructions

Product Overview



① On/Off Button

Press for 2 seconds to turn on/off the plug.

Press for 7 seconds to reset the network configuration mode.

② Socket

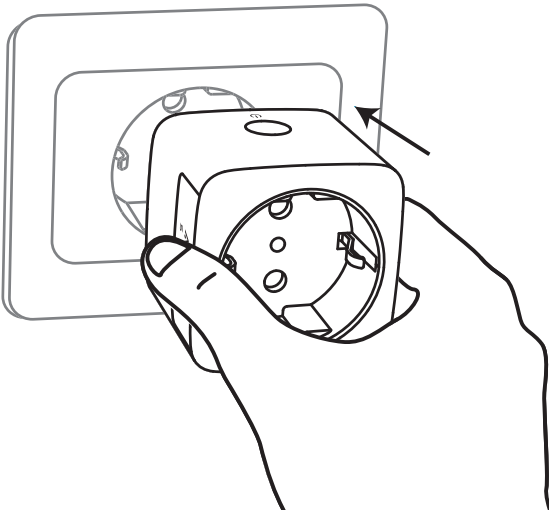
③ Plug

LED Indicator

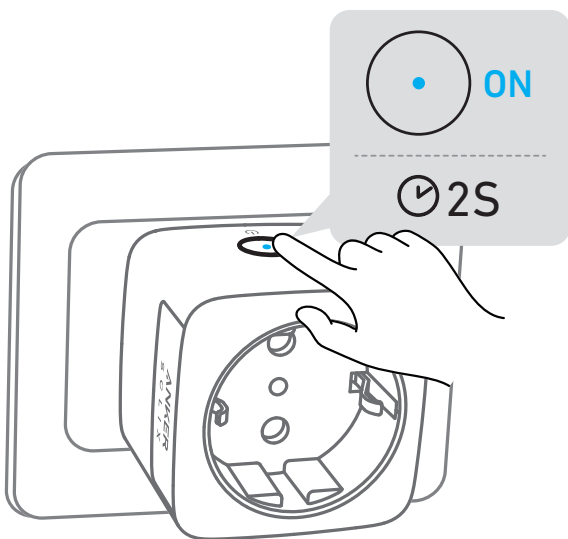
Description	LED Status
Press the on/off button for 2 seconds to start the network configuration.	Blue light flashes slowly
Upgrade the firmware.	Blue light flashes slowly
Tap the "Find Indicator" function in the app.	Blue light flashes slowly
Network configuration is successful.	Solid Blue
The socket is faulty.	Red light flashes slowly

Power On

1. Plug in Smart Plug.



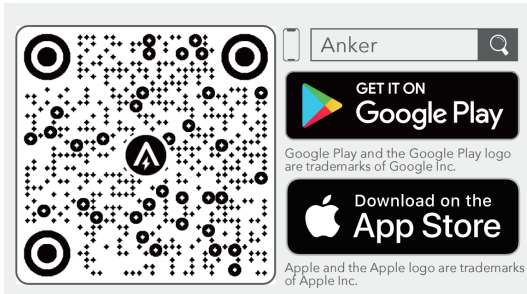
2. Press for 2 seconds to turn on the plug. The indicator will turn blue and fade in and out slowly.



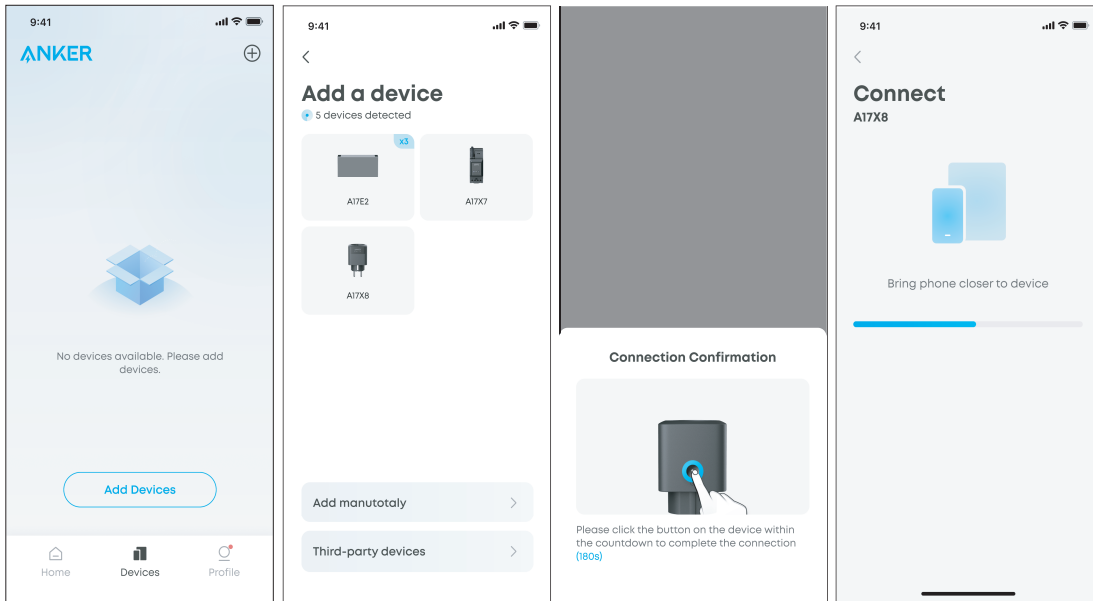
Using the App

Download the Anker App

Download the Anker app from the App Store (iOS devices) or Google Play (Android devices), or by scanning the QR code.

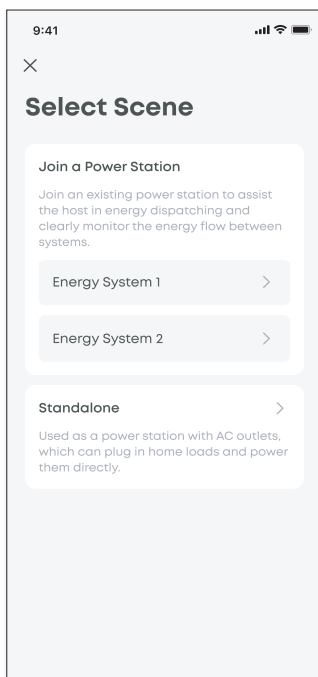


Add the Smart Plug



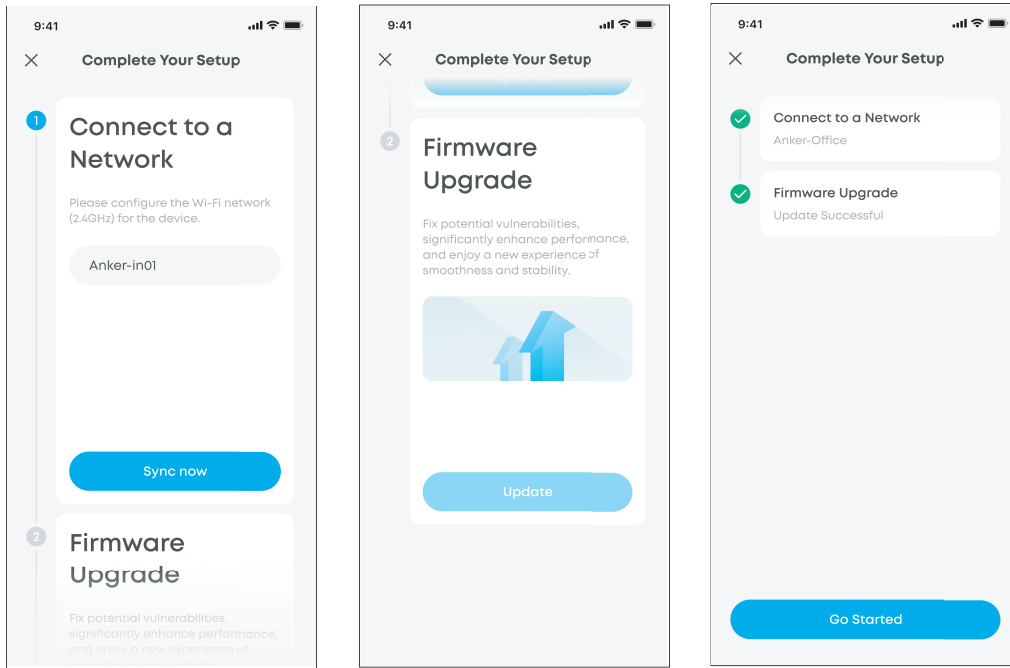
Select the Scene

Select **Join a Power Station** or **Standalone** according to the actual application scenario of the smart plug.



Initialization Settings

Follow the in-app instructions to complete the initialization settings.



Specification

Operation Temperature	-20°C -40°C
Voltage	220-240Vac, 50/60Hz
Current	16A
Communication	Wi-Fi (2.4G)
	Bluetooth
Dimensions (W*H*D)	50*50*83.5mm

Network Configuration Instructions

Bluetooth Low Energy (BLE) Status: When the equipment is not yet connected to a network, it will automatically enable BLE broadcasting and activate BLE services to provide Bluetooth network configuration capabilities.

Note: During the BLE configuration process, ensure your network environment is stable and follow the instructions to complete the setup.

Port 5353

The primary function of port 5353 (TCP/UDP 5353) in a network is to implement the mDNS protocol for mutual discovery between devices on the local area network (LAN).

Application Scenarios: Multi-device linkage, self-consumption scenarios, and energy scheduling strategies in the LAN.

Access the device via hostname.local on the same local area network without traditional DNS configuration.

mDNS Protocol Characteristics: Using UDP protocol, port 5353 is its standard port, compatible with the standard DNS query format.