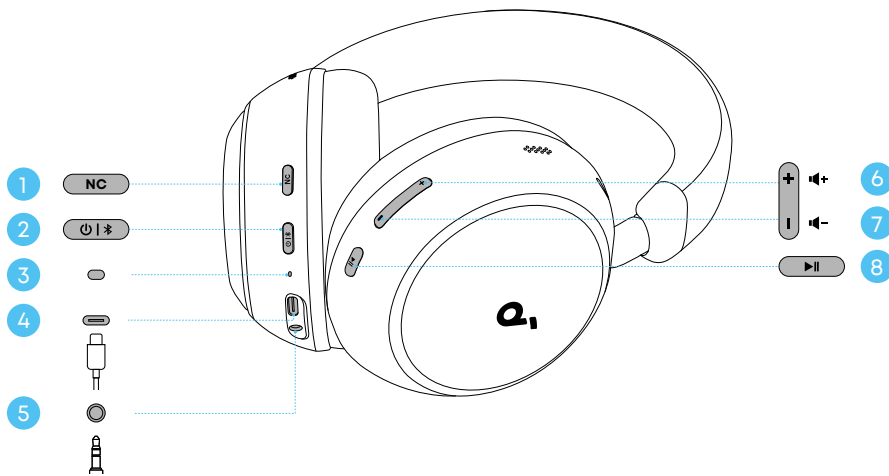


OVERVIEW

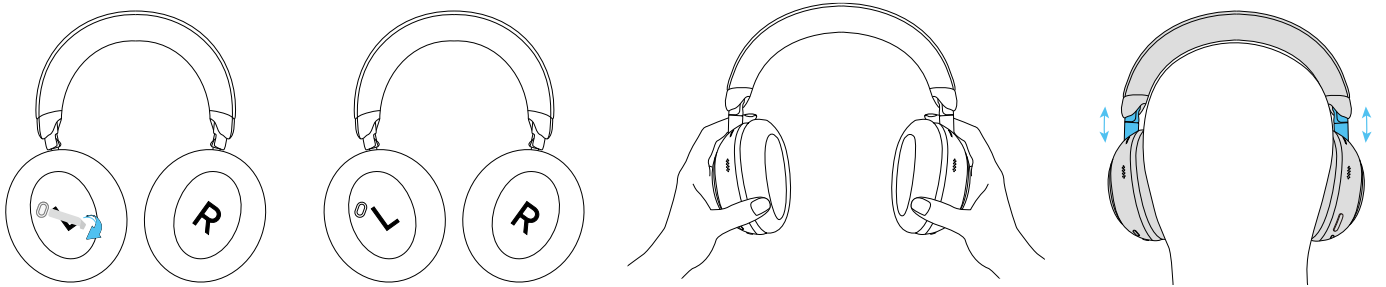


1. NC Button
2. Power Button
3. LED Indicator
4. USB-C Charging Port
5. 3.5 mm Audio Input
6. Volume Up Button
7. Volume Down Button
8. Multi-Function Button (MFB)

WEARING

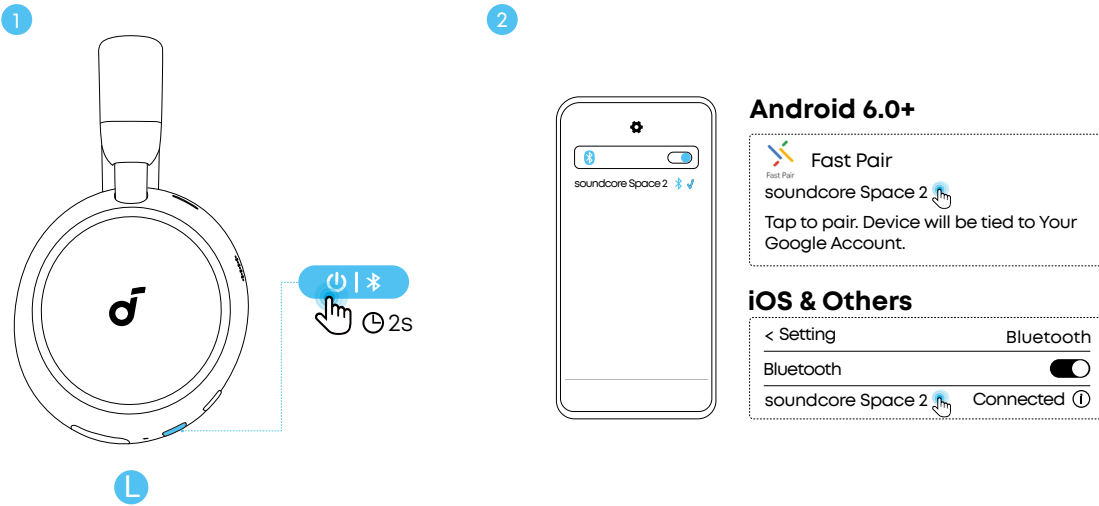


- Before wearing, peel off the protective film on the wearing detection sensor inside the left ear cup.
- Removing the protective film does not automatically enable the wearing detection feature. This feature is turned off by default. To activate automatic playback / pause, go to the soundcore app home page, tap the gear icon in the upper-right corner > **More Settings** > **Wearing Detection**, and manually turn it on.



Wear the headphones with the "L" logo on your left ear and the "R" logo on your right ear. Adjust the length of the headband for a comfortable fit and optimal noise cancelling performance.

POWERING ON AND PAIRING



First-Time Pairing: Press and hold the power button for 2 seconds to power on. The headphones will automatically enter Bluetooth pairing mode when connecting for the first time. Select "**soundcore Space 2**" on your device's Bluetooth list to connect.

- When pairing, the LED indicator will start flashing blue. After the pairing is successful, the LED indicator will stay on for 3 seconds and then go off.

Google Fast Pairing: Enjoy instant pairing with your Android smartphone (running Android 6.0 and above) via Fast Pair enabled by Google.

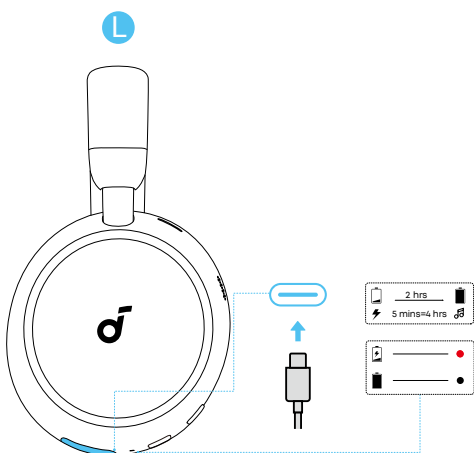
Please note that due to local regulations and Android device manufacturer system configurations, Google Fast Pairing may not be available in some regions.

To manually pair or connect a second device, double-press the power button when the headphones are turned on. Alternatively, with the headphones turned off, press and hold the power button for 5 seconds to enter Bluetooth pairing mode.



- The headphones will automatically power off after 5 hours of inactivity when Bluetooth is disconnected. The auto power-off duration can be customized in the app.

CHARGING



When the battery is running low, you will hear a voice prompt.

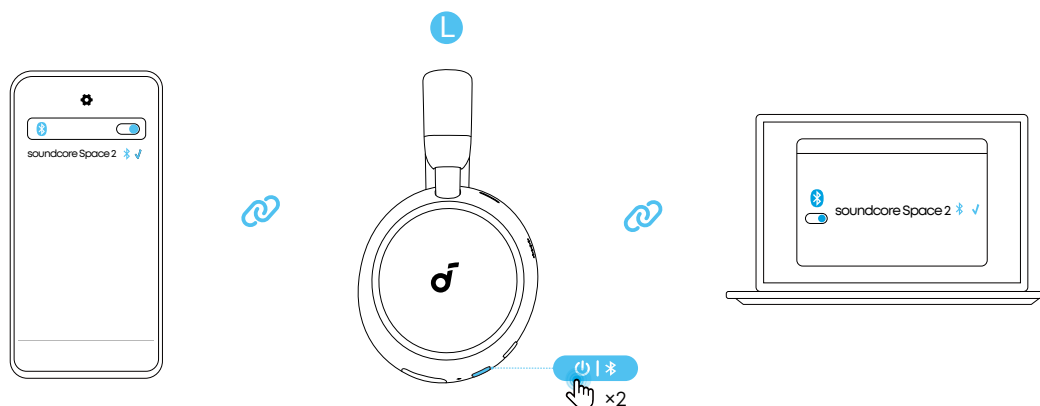
Use the included USB-C charging cable to connect your headphones to a power source.

A full charge takes about 2 hours. A 5-minute quick charge provides up to 4 hours of wireless playtime.



- Ensure the USB-C port is completely dry before charging.
- Do not use the headphones while charging.
- If storing the headphones for an extended period, charge the battery every 6 months to prevent over-discharge, which may cause the headphones to malfunction.

DUAL CONNECTIONS



Dual Connections feature is enabled by default. If you prefer to disable this feature, tap the gear icon in the upper-right corner to access **Settings**, then tap the toggle switch for **Dual Connections** to turn it off. When already connected to one device, press the power button twice to pair with a new device.



- LDAC remains available when the headphones are connected to two devices at the same time.





Dual-Device Playback

There are two audio playback switching modes available in the soundcore app, giving you the ideal flexibility for a seamless listening experience across smartphones, tablets, and computers.

- **Automatic Switching:** The headphones intelligently switch to the device that starts playback, ensuring a seamless listening experience.
- **Manual Switching:** Pause playback on the current device, then start playback on the other connected device to switch manually.

BUTTON CONTROLS

	Switch ambient sound modes (ANC / Transparency) * Normal mode needs to be enabled in the app.		Press once
	Power on / off		Press and hold for 2 seconds
	Play / Pause		Press once
	Next track		Press and hold for 2 seconds
	Previous track		Press and hold for 2 seconds
	Volume up		Press once
	Volume down		Press once

	Answer / End a call		Press once
	Reject a call		Press and hold for 2 seconds
	Mute / Unmute the microphone		Press and hold for 2 seconds
	Activate Voice Assistant / Anka / AI Translation / Nap Mode * You can set your preferred feature in the soundcore app.		Press and hold for 2 seconds

NOISE CANCELLATION

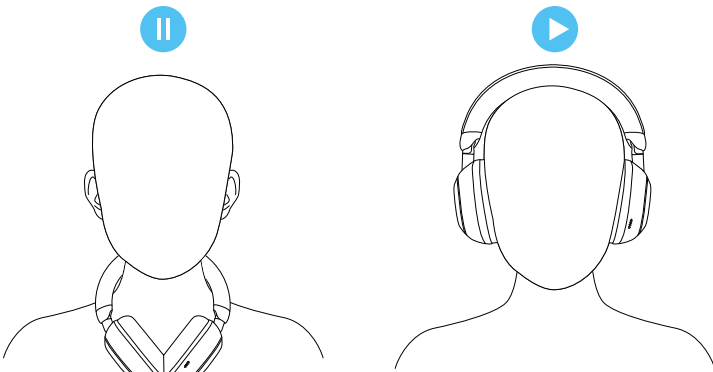
Press the NC button to activate noise cancellation, effectively reducing ambient noise so you can stay focused on your music.

Note: Noise cancellation is the default mode upon powering on.

TRANSPARENCY

To stay aware of your surroundings while listening to music, switch to transparency mode via the NC button.

WEARING DETECTION



The headphones feature built-in intelligent wearing detection that monitors your wearing status in real time. Music will automatically pause when you take the headphones off and resume when you put them back on.



• To ensure the wearing detection feature works normally, please note the following:

1. Proper Wearing

Make sure to wear the headphones correctly on your ears.

The sensor may not function properly if the headphones are hung around your neck, covered by your hands, placed in a bag, or blocked by a hat, scarf, or thick hair. In these cases, the sensor may not detect your wearing status, preventing music from pausing or resuming automatically.

2. Bluetooth Connection Required

This feature is only available when the headphones are connected via Bluetooth. It will not function during wired listening.

3. Device and App Compatibility

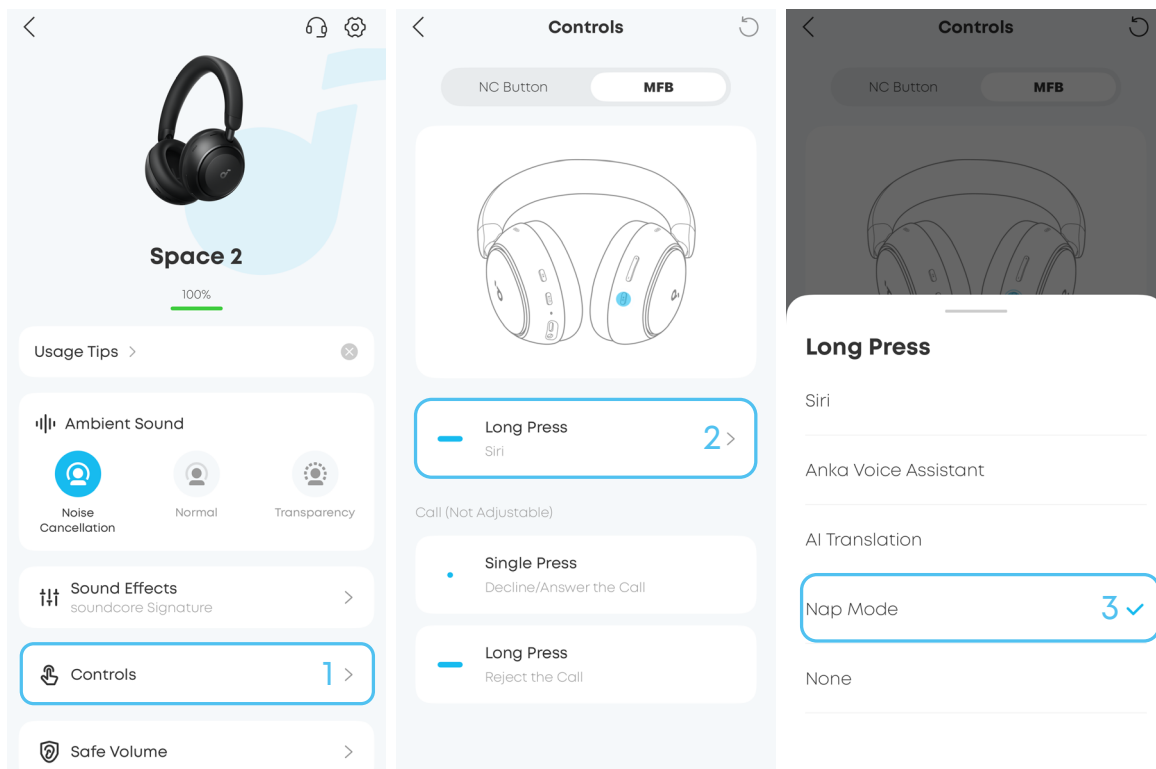
Some devices or third-party music apps may not support automatic playback commands. If wearing detection does not work as expected, please verify that your device and app are compatible with this feature.

NAP MODE

Nap Mode provides you with a personalized relaxation experience. When this mode is activated, the headphones automatically play built-in sounds to help you unwind, fall asleep, or take a short rest.

Noise cancellation will be enabled by default in Nap Mode and cannot be switched to another ambient sound mode.

To enable Nap Mode, go to the home page, tap **Controls > MFB > Long Press > Nap Mode**.



- Press and hold the multi-function button: Enter / switch to Nap Mode
- Press the multi-function button again: Exit Nap Mode
- Press and hold the volume button: Switch background audio tracks
- Press the volume button: Adjust volume

You can set the default Nap Mode duration in the app. When the countdown finishes, an alarm will sound. While the alarm is ringing, press any button to exit Nap Mode. If the timer is on and the alarm hasn't sounded yet, you can exit Nap Mode early by pressing the multi-function button once.



- If you receive a call while in Nap Mode, please exit Nap Mode before answering to ensure normal call audio.

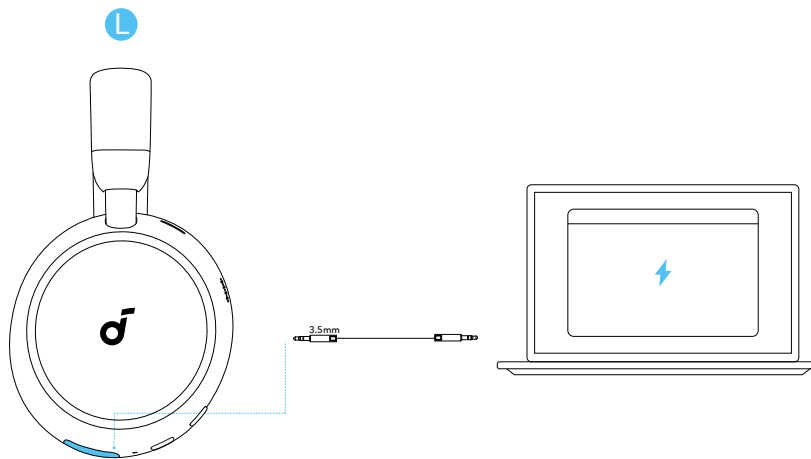
LDAC

Enable LDAC in the soundcore app to enjoy high-resolution audio on devices running Android 8.0 or later. This feature delivers higher sound quality but may increase power consumption and reduce playtime. For the best LDAC performance with stable Bluetooth connection, use LDAC in a low-interference environment.

Follow the steps below to enable LDAC on your device:

1. Open the soundcore app and go to Settings.
2. Tap **"Sound Mode"**.
3. Select **"Preferred audio quality"** to switch to LDAC codec.
4. If the headphones are connected to two devices simultaneously, a prompt will appear indicating that LDAC is not supported in this state. Tap "Enable" in the pop-up to proceed.
5. Switching audio codecs takes about 10 seconds. You may be prompted to update your headphones' firmware if an update is available.

WIRED LISTENING



Connect a 3.5mm AUX cable to listen to audio from an external device. Bluetooth will automatically turn off when in wired listening mode.



- During wired listening, only the NC button is available for switching ambient sound modes (ANC / Transparency). All other buttons will not function.

AI ASSISTANT

Before Use:

- Update the soundcore app to the latest version.
- Keep the app open and your headphones connected to your phone via Bluetooth while using the AI assistant. On Android devices, allow the app to run in the background.

Note:

- The AI assistant prioritizes your privacy and data security.
- AI-generated responses are for reference only and may contain inaccuracies. Please use your discretion.
- Feature interfaces may vary with app version updates.

What Anka Can Do for You

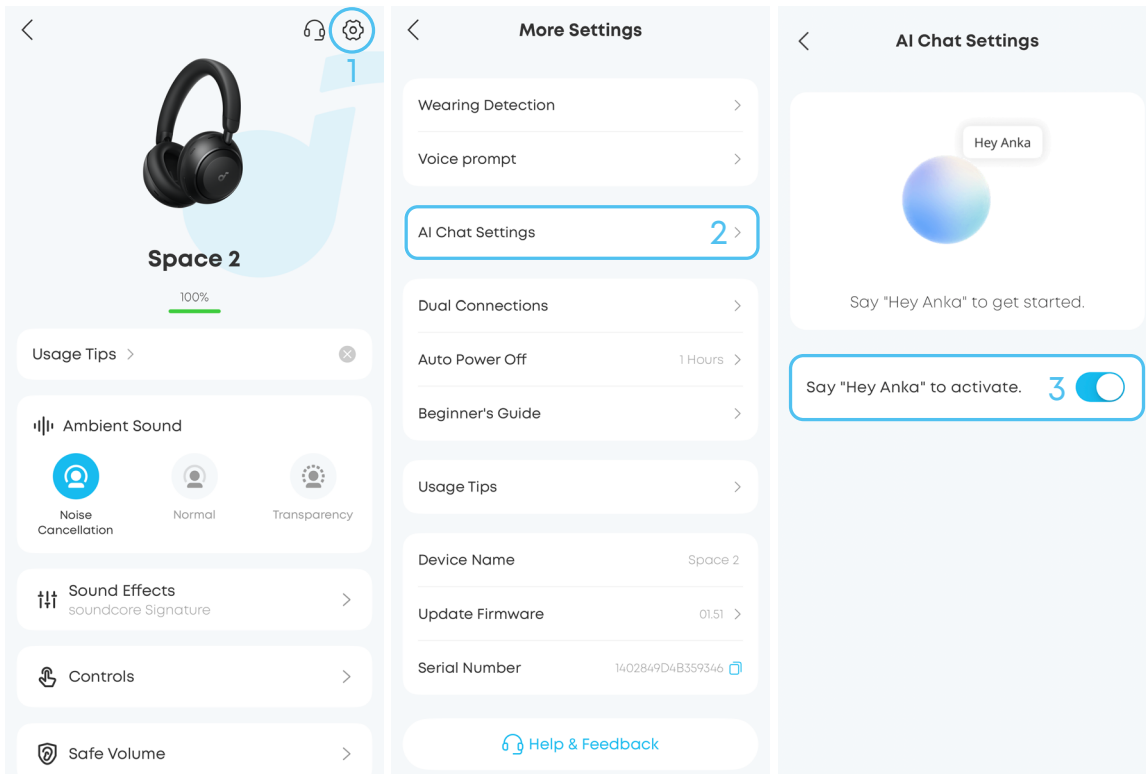
Function	What It Does	Example Command (Say the following to Anka after activating with "Hey Anka")
Answering Questions	Acts as your portable encyclopedia. Ask any question anytime.	"Why do giraffes have such long necks?"
Casual Conversation	Chats with you like a friend would and helps you relax.	"Tell me a joke."
Information Aggregation	Keeps you up to date with daily news and updates.	"Tell me the latest tech news for today."
Information Lookup	Checks the weather, the latest match scores, and more.	"What's the weather like in New York today? Will I need an umbrella when I go out?"



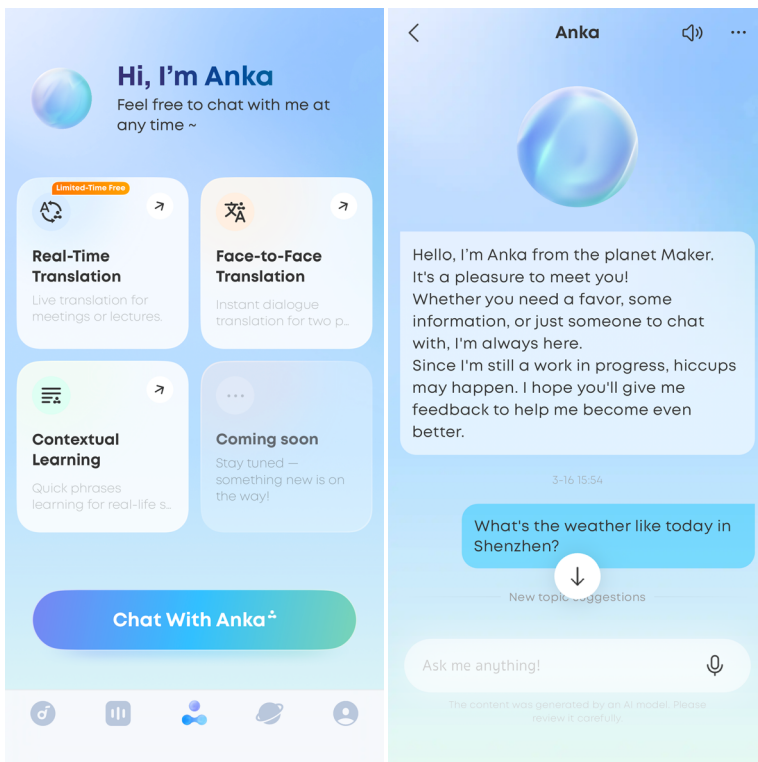
- Some voice commands may not work due to app limitations.

How to Access the Feature

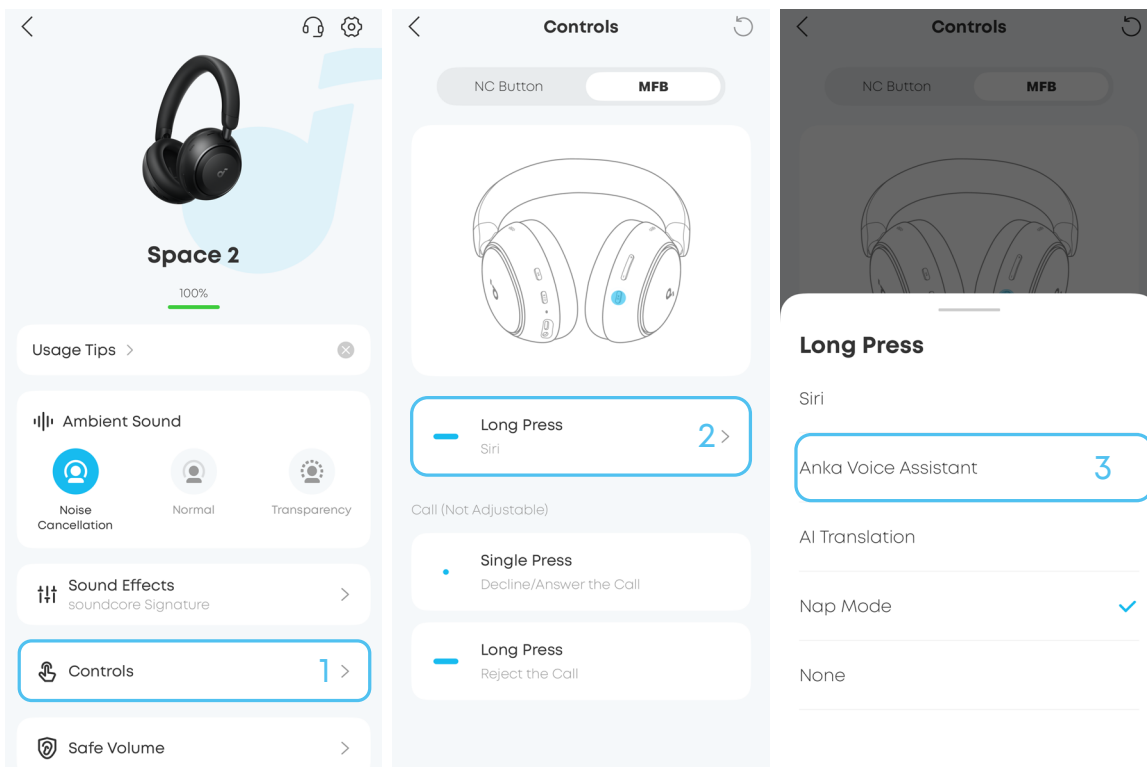
1. Go to the **Settings** page, find the **AI Chatting settings**, and toggle on the **"Hey Anka" voice wake-up switch**. Once enabled, simply say **"Hey Anka"** to activate the assistant.



2. In the soundcore app, go to **Anka Page > Chat With Anka**.



3. Go to the **Control** page, set the **long press** action of the **MFB** to trigger the Anka assistant. After this, you can also access the Anka assistant instantly by **long pressing the multi-function button** on your headphones.



AI TRANSLATION

Note: Feature paths and interface visuals may change with software updates. For the most accurate guidance, please refer to your latest app version.

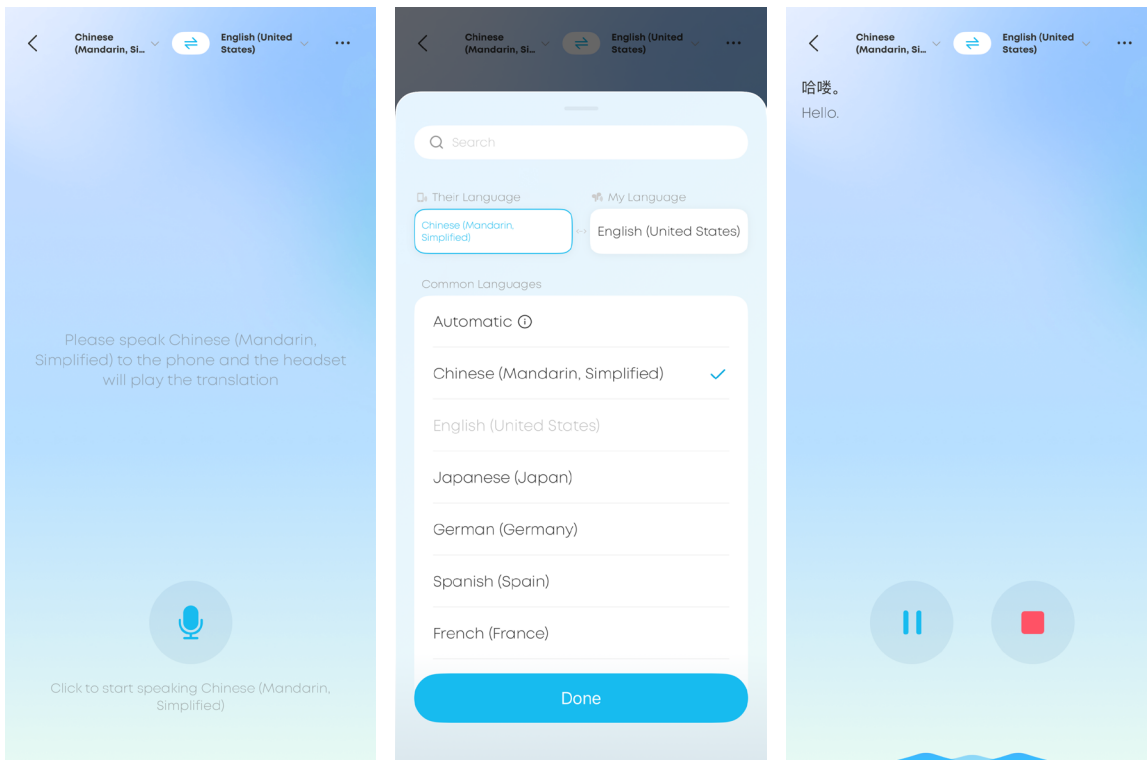
Before Use:

- Update the soundcore app to the latest version and ensure your headphones are connected to the app.
- Disable Dual Connections.

Real-Time Translation

In settings where you're exposed to content in a foreign language for extended periods (e.g., lectures, classes), real-time translation delivers continuous text display and audio playback of the translated content with almost no lag.

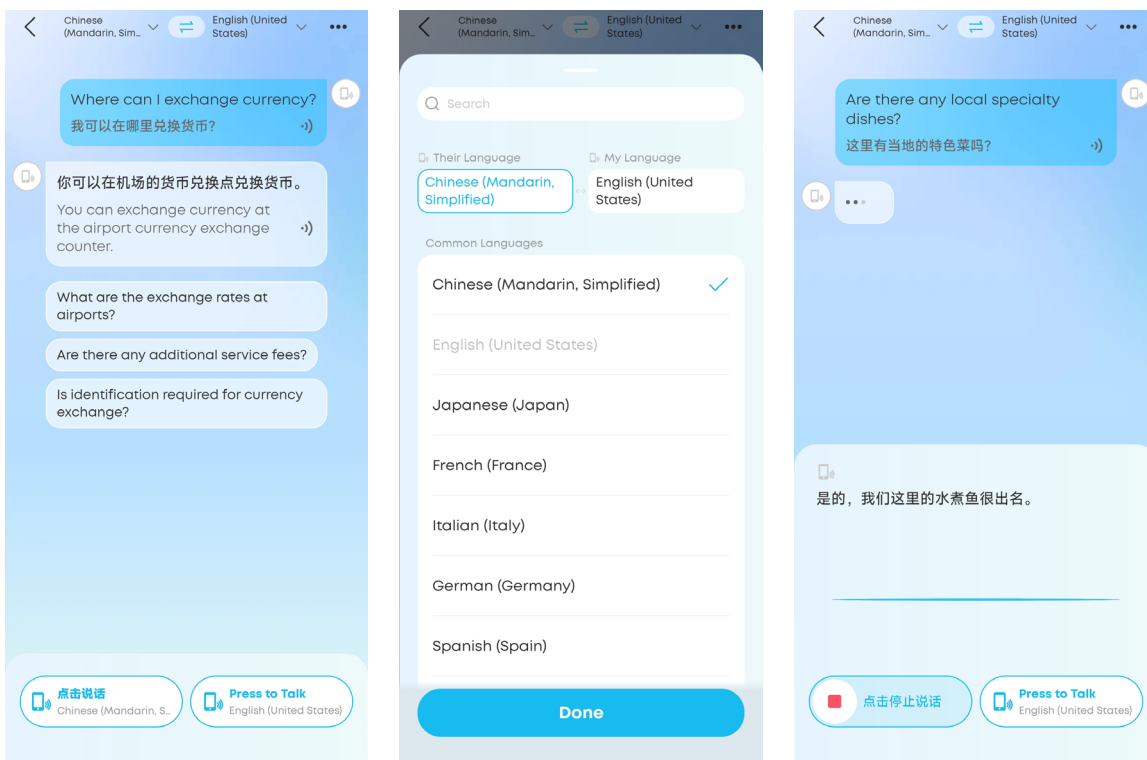
In the soundcore app, go to **Anka** page and tap **Real-Time Translation**. Make sure your earbuds are connected to the app.



1. Tap **Real-Time Translation**.
2. Tap the language section at the top of the page, then select **Their Language** and **My Language**.
3. Tap the microphone button to start recording.

Face-to-Face Translation

In the soundcore app, go to **Anka** page and tap **Face-to-Face Translation**.

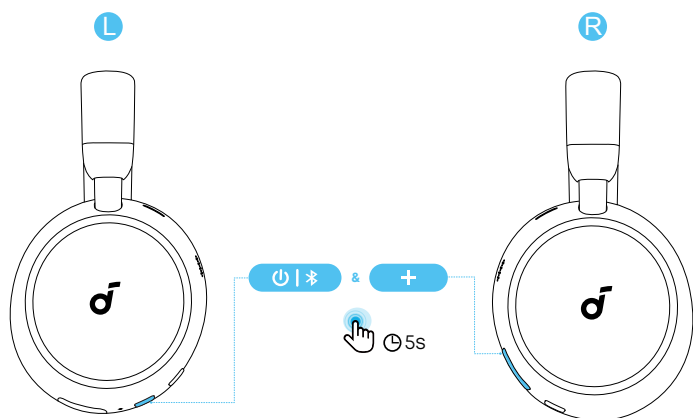


When your headphones are connected to the app, follow the steps below to try out Face-to-Face Translation.

1. Tap the language section at the top of the page, then select **Their Language** and **My Language**.
2. Tap the bottom-right button and speak to your headphones. The translation will play from your phone.
3. Tap the bottom-left button and speak into your phone. The translation will play from your earbuds.

Note: This feature works even if your headphones aren't connected to the app. Just speak into your phone, and the translation will play through its speaker.

RESETTING



You might need to reset your headphones if you experience connectivity or function issues.

Delete the pairing history from your Bluetooth device first. Press and hold the volume up and power button simultaneously for 5 seconds until the LED flashes red three times.

SPECS

Specifications are subject to change without prior notice.

Input	5V \equiv 0.75A
Battery Capacity	750 mAh \times 1
Charging Time	Quick charge: 5 min = 4 hr playback; Full charge: approx. 2 hr
Playtime	ANC On: 50 Hours ANC Off: 70 Hours LDAC + ANC On: 40 Hours LDAC + ANC Off: 45 Hours
Driver Size	40 mm
Frequency Response	20 Hz - 40 kHz
Impedance	16 Ω \pm 15%
Bluetooth Version	Bluetooth 6.1
Bluetooth Range	49 ft (15 m)

FIRMWARE UPDATE

You will be informed once a new firmware version is detected when you connect the headphones with the app. Ensure the headphones are powered on and connected to a device until the firmware update is complete. During the update, avoid using the headphones and ensure stable access to the internet.

Default Open Port: Classic Bluetooth + BLE (Bluetooth Low Energy)

Port Description: After the device is powered on, both Classic Bluetooth visibility (or pairing mode) and BLE broadcasting are automatically enabled, providing Bluetooth pairing (or control) services. The Bluetooth service is disabled when the device is powered off.

Note: The 'x' of SN Code: xxxxxxxxxxxxxxxx is a variable, see below table.

Variable 'x'	Range of variable	Content
Eighth	0-9 or A-F	Denotes the hardware version which is not effected on the safety compliance.
Ninth	8,9,A,B,C...	Denotes the year, 8 means 2018, 9 means 2019, A means 2020, B means 2021, C means 2022, and so on.
Tenth and Eleventh	01,02,03...	Denotes weeks, 01 means the first week of this year, 02 means the secondary week of this year, and so on.
Twelfth	1-7	Denotes date, 1 means Monday, 2 means Tuesday..., 7 means Sunday and so on.
The last five	00001-99999	Denotes serial No.

Hereby, Anker Innovations Limited declares that this device is in compliance with The Product Security and Telecommunications Infrastructure (Security Requirements for Relevant Connectable Products) Regulations 2023. For the Statement of Compliance, visit the website: <https://uk.soundcore.com/pages/psti-related>

CUSTOMER SERVICE

service@soundcore.com
uk.support@soundcore.com (UK)
ie.support@soundcore.com (IE)
support.mea@anker.com (MEA)
support.india@anker.com (IN)
ced-cn@anker.com (CN)
support@anker.com (JP)
support.kr@anker.com (KR)



(US/CA) +1 (800) 988-7973
(UK) +44 (0) 1604 936 200
(DE) +49 (0) 69 9579 7960
(RSA) +27 801112209
(UAE) +971 8000 320 817
(KSA) +966 8008 500 030
(KW) +965 2206 9086
(EG) +20 8000 000 826
(TR) 00800 621 24 94
(IN) +91 8000 504 414
(CN) +86 400 0550 036
(JP) 03 4455 7823
(KR) +82 1666 8470
(AU/NZ) +61 1800 920 330
(PL) +48 800 707 993
(SE) +46 20 012 33 22

