

X1 Hybrid System – Dual Parallel Installation Guide - AU

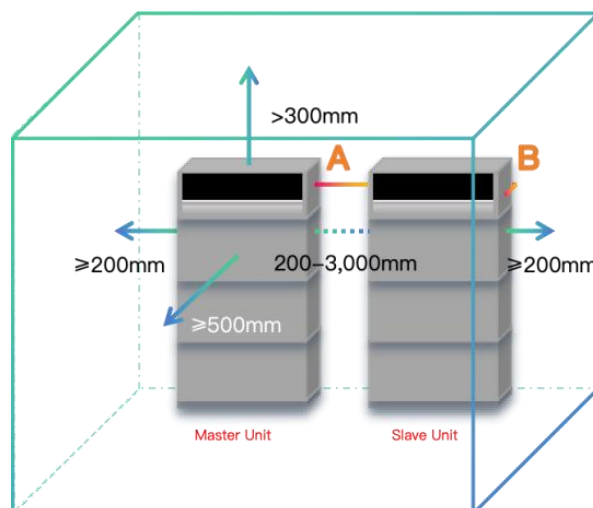
1. Required Additional Material

Item	Description	SKU
Parallel COM Cable	5m cable for inter-module communication	A5682G14
	15m cable for inter-module communication	A5682G15

2. Installation Preparation

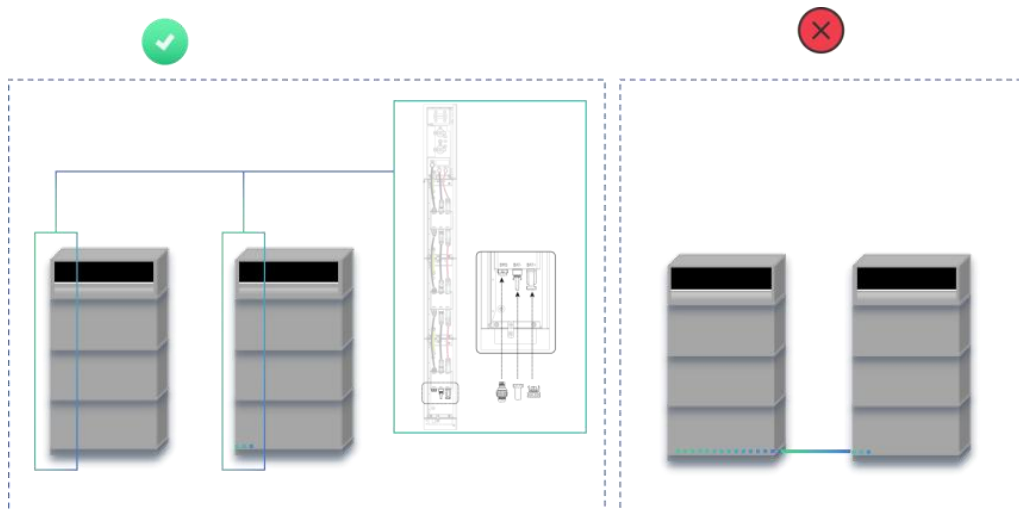
(1) Spacing:

- Same requirement as for a single X1 system.
- Ensure the COM ports (A & B) of Master and Slave modules are within 9m if not using parallel COM cable from Anker SOLIX.



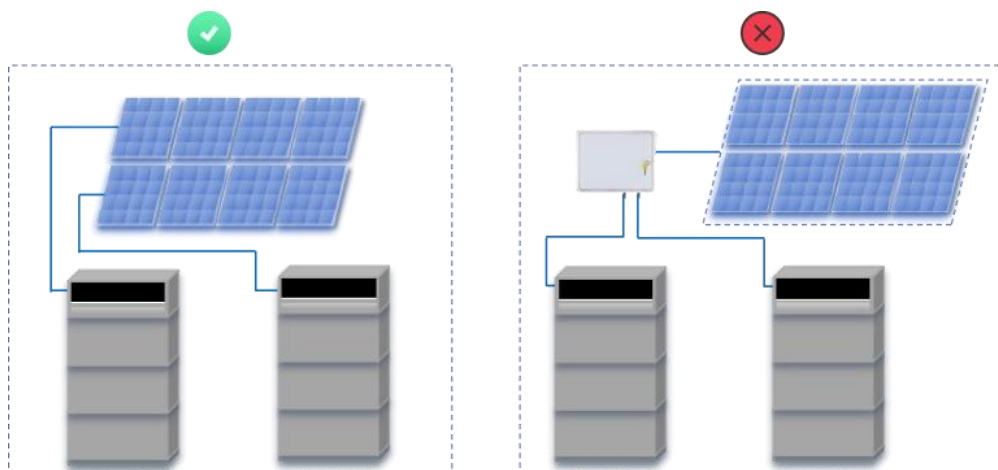
(2) Battery Cable Connection:

- Battery power and signal cables connect as with a single unit.
- **Do not connect signal cables** between battery packs of different modules.



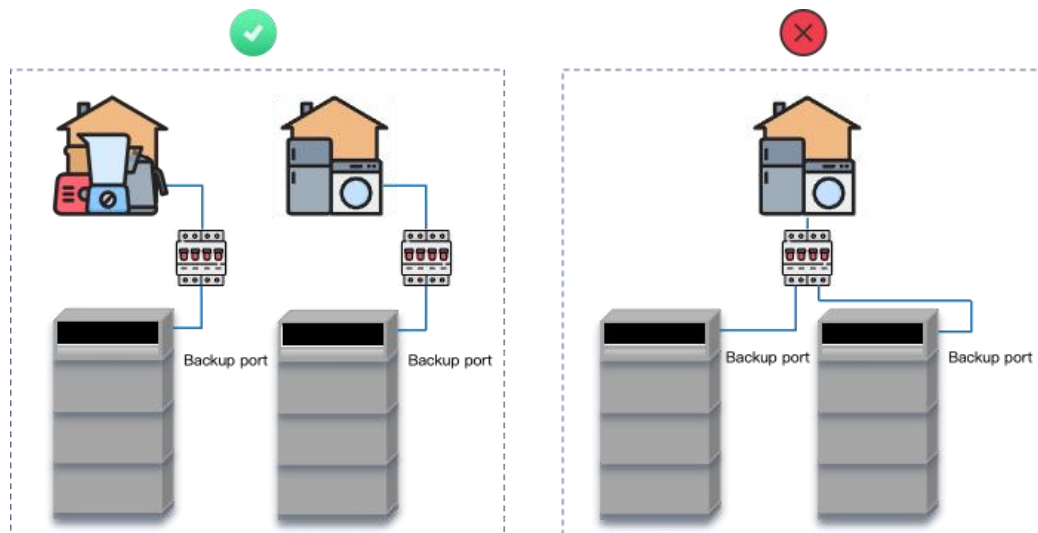
(3) PV Connection:

- If no PV panels are connected yet, the Master can handle up to the single-system maximum PV input.
- **One PV array must not be shared** between Master and Slave modules.
- Follow single-unit wiring details.



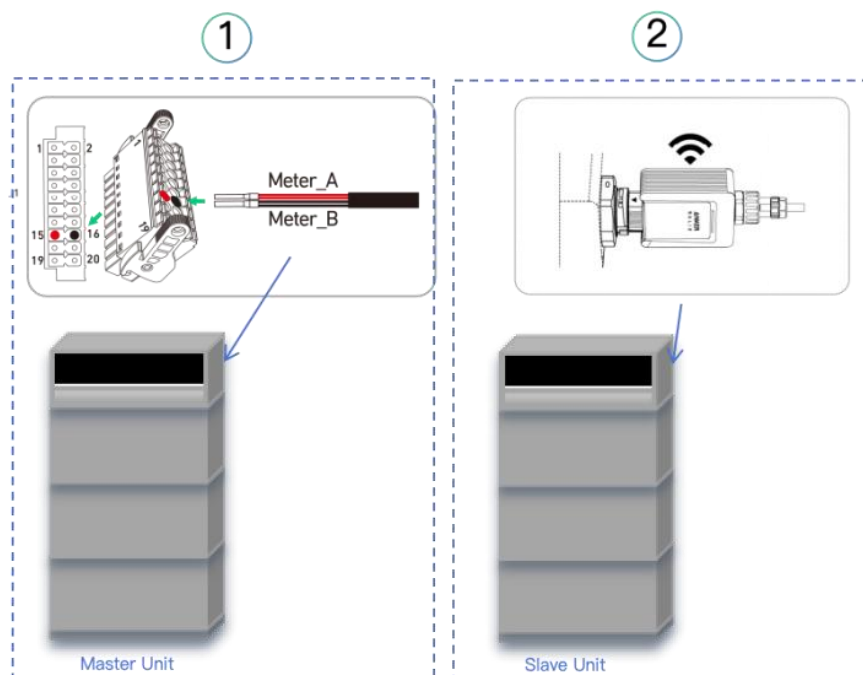
(4) AC Grid and Backup Ports:

- Each Power Module's **Grid port** must connect to an RCD-equipped circuit breaker before paralleling to the grid.
- **Backup ports must be wired separately** – do not connect them in parallel.




(5) Power Sensor and Dongle:

- Connect the **power sensor** to the Master module only.
- Plug **one dongle** into the Slave module (for firmware update).



3. Firmware Update

 **Important: Do not connect the COM cable until both modules are fully updated.**

Step-by-step:

(1) Power on both Master and Slave modules and their batteries.

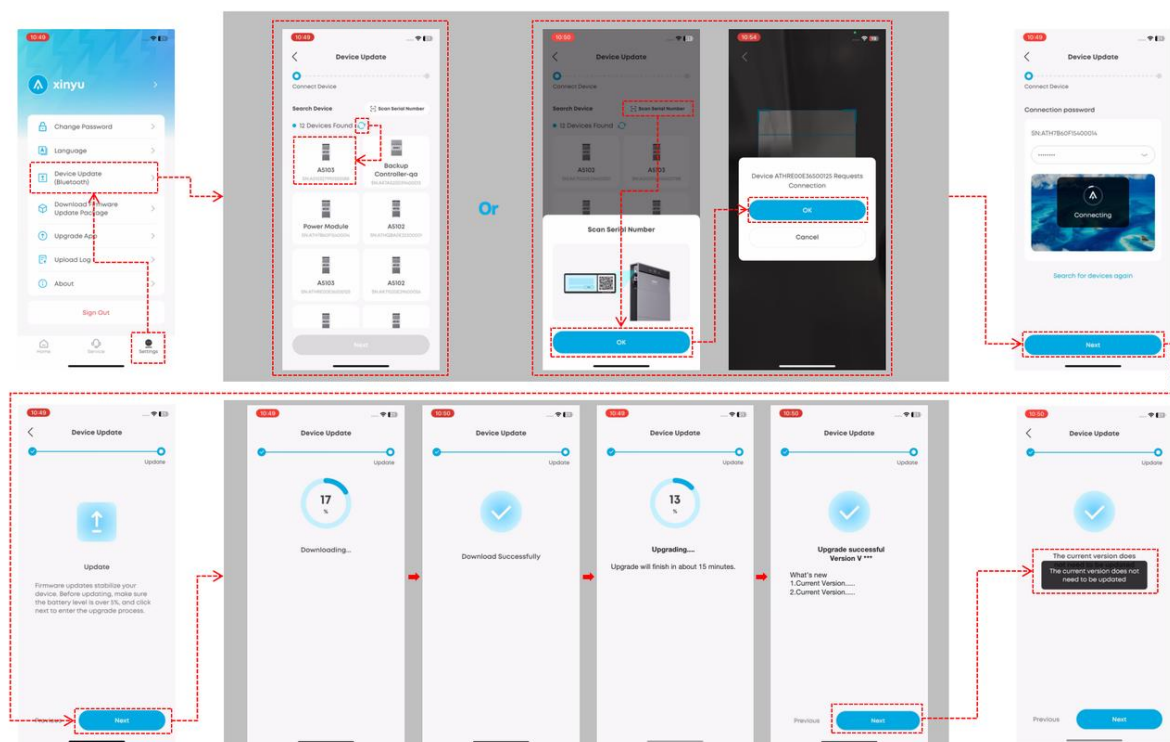
(2) Make sure the dongle is inserted into the **Slave** module.

(3) Open the **AnkerSOLIX App**

- Go to **Settings** → **Device Update (Bluetooth)**

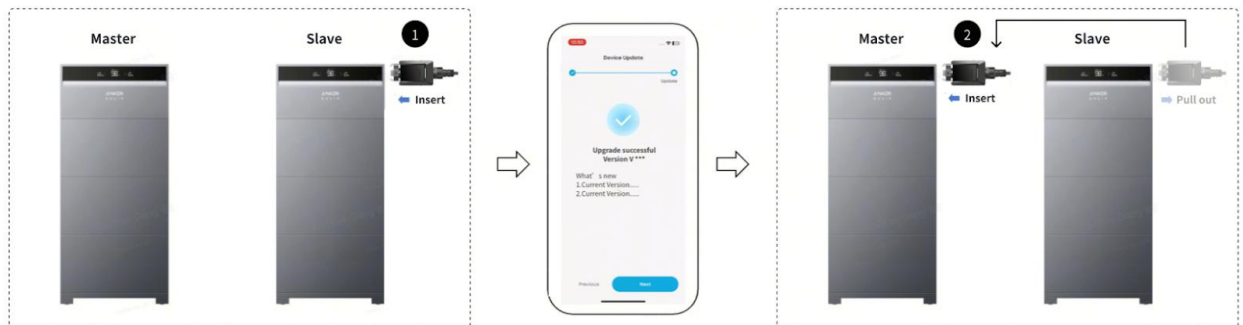
(4) Follow the procedure below:

- Connect devices (auto discovery or scan SN)
- Tap **OK**
- Enter the connection password
- Tap **Next** after connection
- Installs the firmware automatically
- Wait until the update completes successfully



(5) After finishing Slave update:

- Remove the dongle from Slave
- Insert it into Master
- Repeat the same update process
- After completion, **keep the dongle in the Master module**



Note Battery SOC Requirements for Firmware Update:

- Firmware Update cannot start if **SOC < 5%**.
- To charge: keep the system connected to mains supply.
- Charging stops automatically once SOC reaches **≈ 8%**.
- Proceed with firmware update after this charging step.

4. Parallel COM Cable Connection

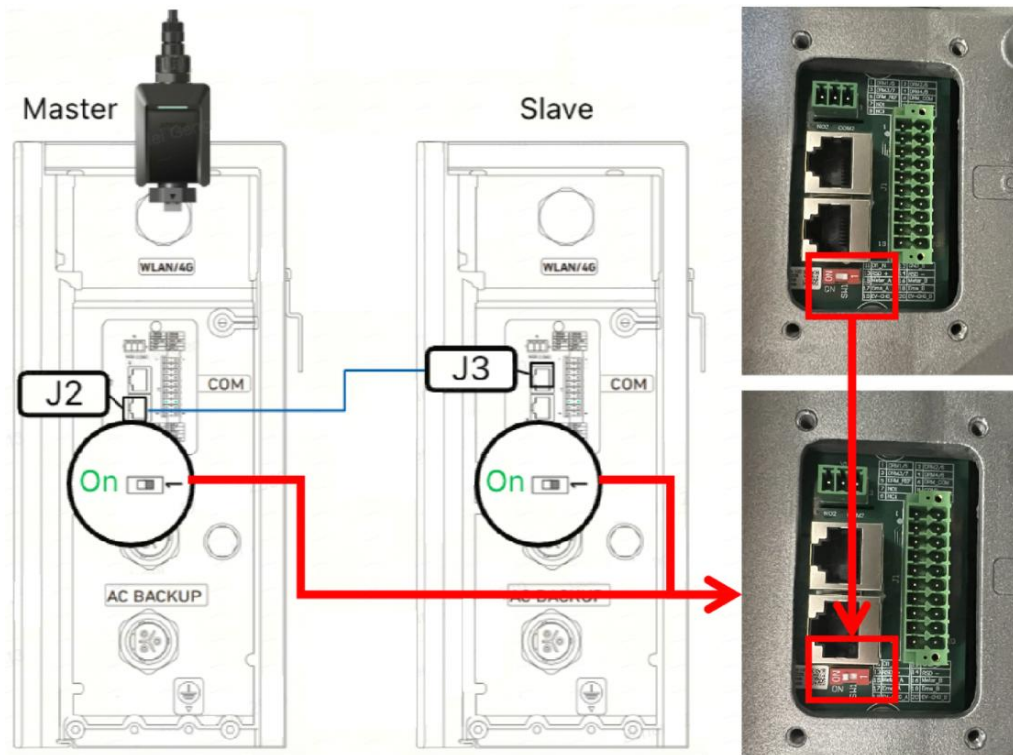
Condition: Both modules must have firmware **version ≥**

V1.0.11.X

(1) Connect COM cable (SKU:A5682G14):

- Master **J2** ↔ Slave **J3**

(2) Set **DIP switches** on both modules to **ON**.



If using a self-made cable:

- Make sure wire sequence meets the required specification.

Pin	1	2	3	4	5	6	7	8
Wire Color	Orange -white	Orange	Blue- white	Blue	Brown- white	Green	Green- white	Brown

- Recommended total cable length ≤ 9 m.

5. System Commissioning – App Operation

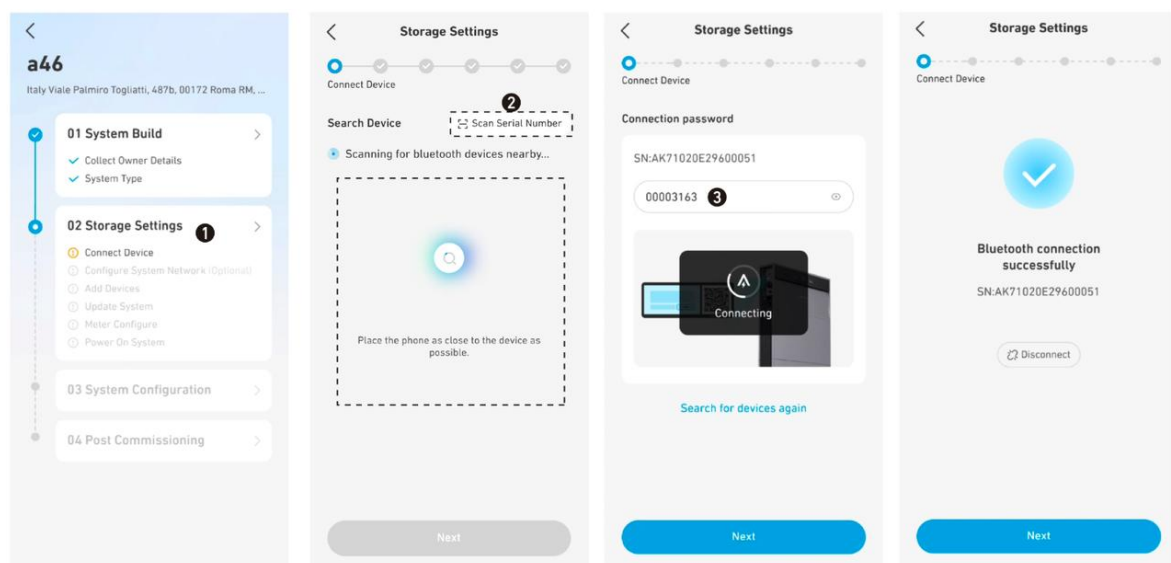
⚠ Important: Please make sure the SOC showed on the paired power modules are exactly the same.

Select the workflow based on the installation case 

A. Two brand-new systems (first-time parallel setup)

(1) On the app's Home screen → tap **Create System** (or "+" icon).

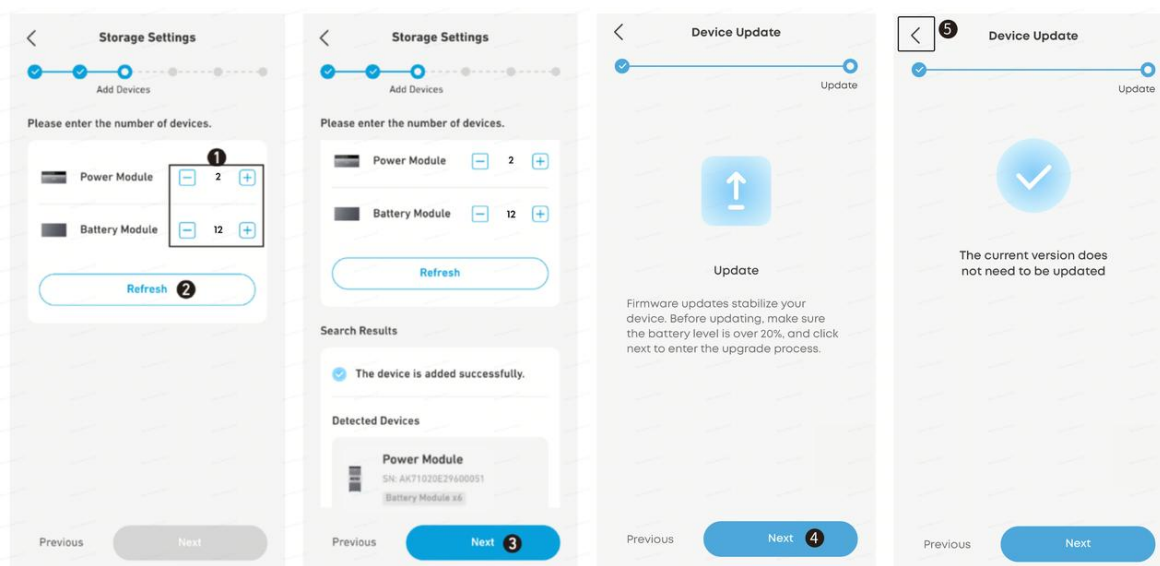
(2) Enter **01 System Build**, follow the single-module setup steps.



(3) When adding equipment, ensure **2 Power Modules** are selected for parallel operation.

(4) After adding the correct number of modules → tap **Next** → **Device Update** page appears.

(5) Complete firmware upgrade → tap **Back**, continue commissioning steps.



B. Expanding an existing system (same installer account)

- (1) On the Home screen → search for the existing system.
- (2) Enter **02 Storage Settings – Add Devices**.
- (3) Modify the number of Power Modules to **2**.
- (4) Continue normal commissioning steps.

C. Expanding an existing system (under different installer account)

or

D. Re-commissioning two existing systems into one parallel system

- (1) Providing the System IDs to Anker SOLIX support team to be cleared;
- (2) Follow **Step A**

Appendix A

⚠ Important Notes

- If the **Master** fails, the Slave cannot operate in parallel.

- If the **Slave fails**, the Master continues to work and uploads the Slave failure status to the cloud/App.
- If “Clear Site” action is required, follow the commissioning flowchart and contact **Anker SOLIX AU Support** for guidance.

Version information

The version information of X1 is as follows:

Model Type	X1-H5K-S, X1-H6K-S	X1-H5K-T, X1-H8K-T, X1-H10K-T, X1-H12K-T
Product Firmware Version	Above V1.0.11.X	above V1.0.9.9
Installer App Version	Above V1.12.0	above V1.12.0
User App Version	Above V3.12.0	above V3.7.0